

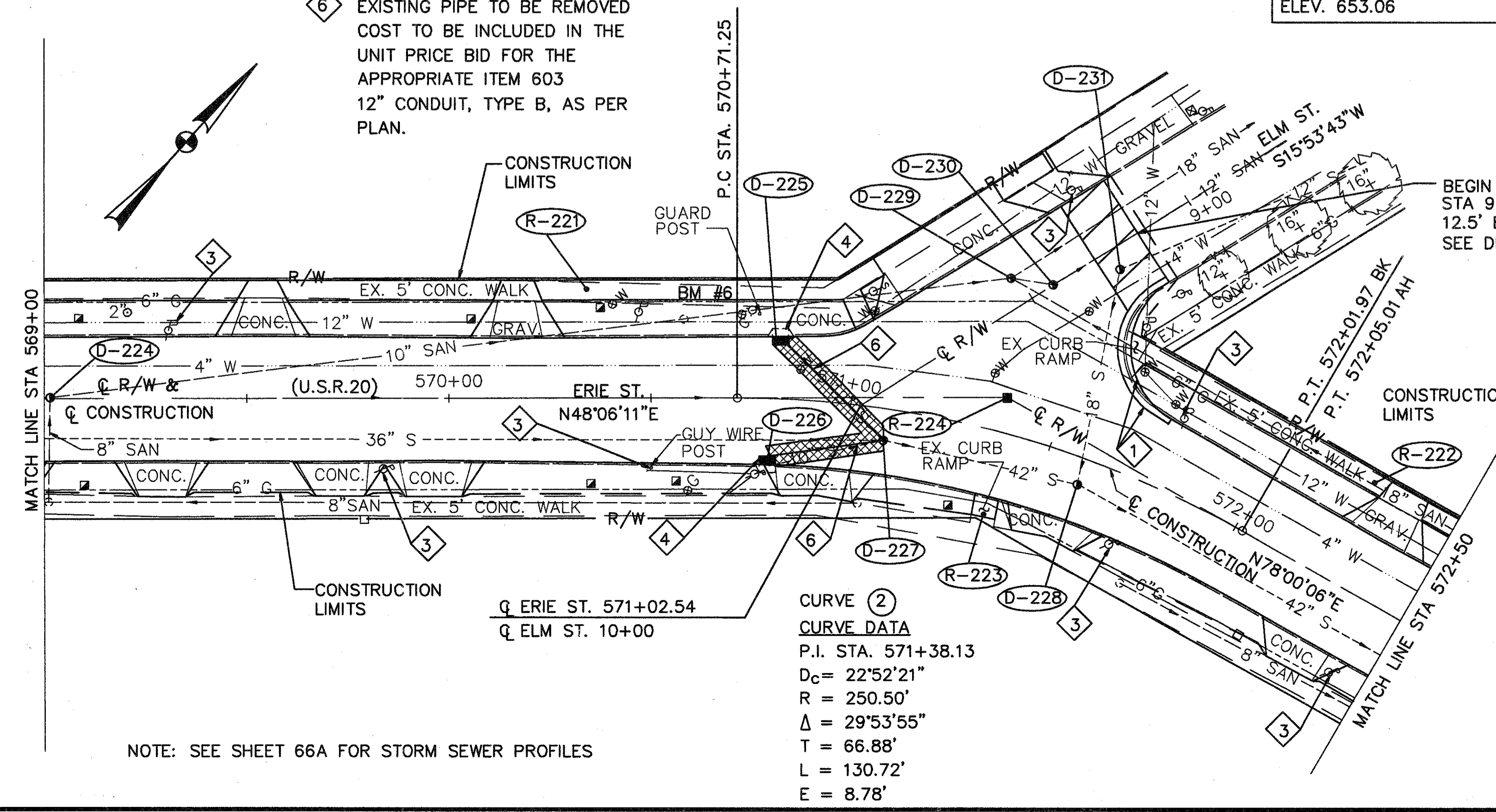
BUTT JOINT INTO BRICK PAVEMENT.  
SEE DETAIL ON SHEET 20.

- 1 PAVEMENT WIDENING LIMITS
- 3 TO BE RELOCATED BY OTHERS
- 4 EXISTING CATCH BASIN OR MANHOLE & APPURTENANCES TO BE REMOVED. COST TO BE INCLUDED IN THE UNIT PRICE FOR THE APPROPRIATE ITEM 604 CATCH BASIN OR MANHOLE ITEM
- 6 EXISTING PIPE TO BE REMOVED COST TO BE INCLUDED IN THE UNIT PRICE BID FOR THE APPROPRIATE ITEM 603 12" CONDUIT, TYPE B, AS PER PLAN.

CURB RAMP SCHEDULE	
STATION	TYPE
571+03, LT.	2
571+39, RT.	2
571+61, LT.	1

BM #6 TOP OF SOUTH FLANGE BOLT OF FIRE HYDRANT WESTERLY CORNER OF ERIE ST. & ELM ST. ELEV. 653.06

REF.	FROM	TO	SIDE	604		608		608		608	
				WALK REMOVED SQ. FT.	MONUMENT BOX FRAME EACH	MONUMENT BOX COVER EACH	4" CONCRETE WALK SQ. FT.	CURB RAMP, TYPE 1 EACH	CURB RAMP, TYPE 2 EACH	CURB RAMP, TYPE 2 SQ. FT.	
R-220	565+50	569+00	LT.	1388			1368				
R-221	569+00	571+85	LT.	1143			1050				
R-222	571+60	572+50	LT.	411			411	1			
R-223	571+39		RT.	30							30
R-224	571+36.6		8.8'LT.		1	1					
<b>TOTAL</b>				<b>2972</b>			<b>2829</b>	<b>1</b>	<b>1</b>		<b>30</b>



**CURVE (2)**  
CURVE DATA  
P.I. STA. 571+38.13  
D<sub>c</sub> = 22°52'21"  
R = 250.50'  
Δ = 29°53'55"  
T = 66.88'  
L = 130.72'  
E = 8.78'

BEGIN PAVEMENT LIMITS STA 9+19 12.5' BUTT JOINT, SEE DETAIL SHEET 20.

NOTE: SEE SHEET 66A FOR STORM SEWER PROFILES

REF.	FROM	TO	SIDE	604		604		202		301		SPEC.
				12" CONDUIT, TYPE B, 706.02, AS PER PLAN	CATCH BASIN, NO. 3A, AS PER PLAN	MANHOLE ADJUSTED TO GRADE, AS PER PLAN	PAVEMENT REMOVED SQ. YD.	BITUMINOUS AGGREGATE BASE, AC-20 CU YD.	LOW STRENGTH MORTAR BACKFILL MATERIAL, CLASS LSM-50 CU YD.			
D-220	566+38		14.4'LT.	26	1			14.5	4.8	9.6		
D-221	566+35		14.4'RT.	8	1			4.5	1.5	3.8		
D-222	566+41		10'RT.			1						
D-223	566+61		1'RT.			1						
D-224	569+01					1						
D-225	570+82		14.4'LT.	36	1			20.0	6.7	12.7		
D-226	570+79		14.4'RT.	30	1			16.7	5.6	11.2		
D-227	571+10		8'RT.			1						
D-228	571+59		6.5'RT.			1						
D-229	9+51 (ELM ST.)		7'RT.			1						
D-230	9+44 (ELM ST.)					1						
D-231	9+44 (ELM ST.)		5'LT.			1						
<b>TOTAL</b>				<b>100</b>	<b>4</b>	<b>8</b>		<b>55.7</b>	<b>18.6</b>	<b>37.3</b>		

STA. 565+50 TO STA. 572+50