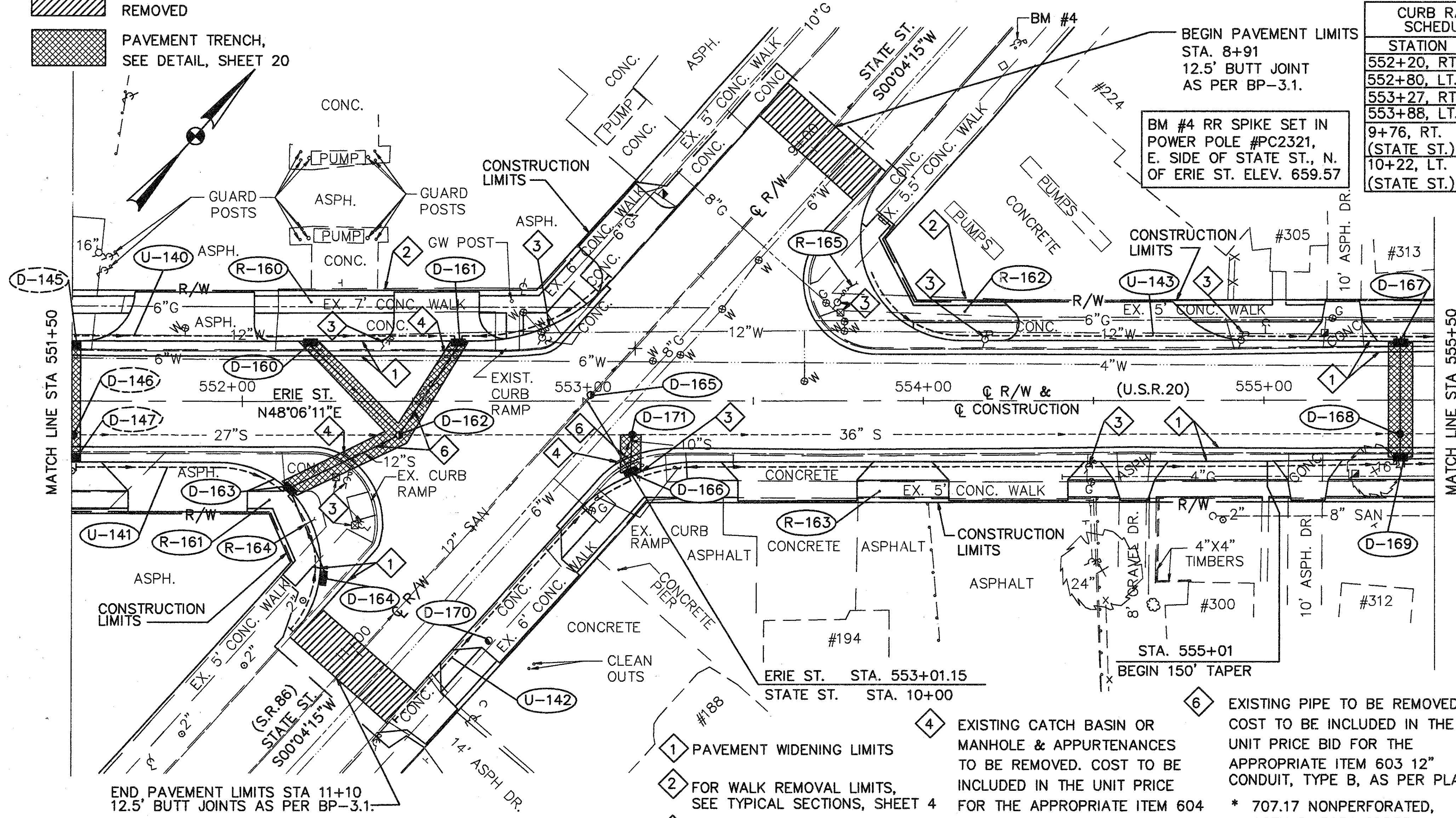


WEARING COURSE REMOVED
PAVEMENT TRENCH, SEE DETAIL, SHEET 20

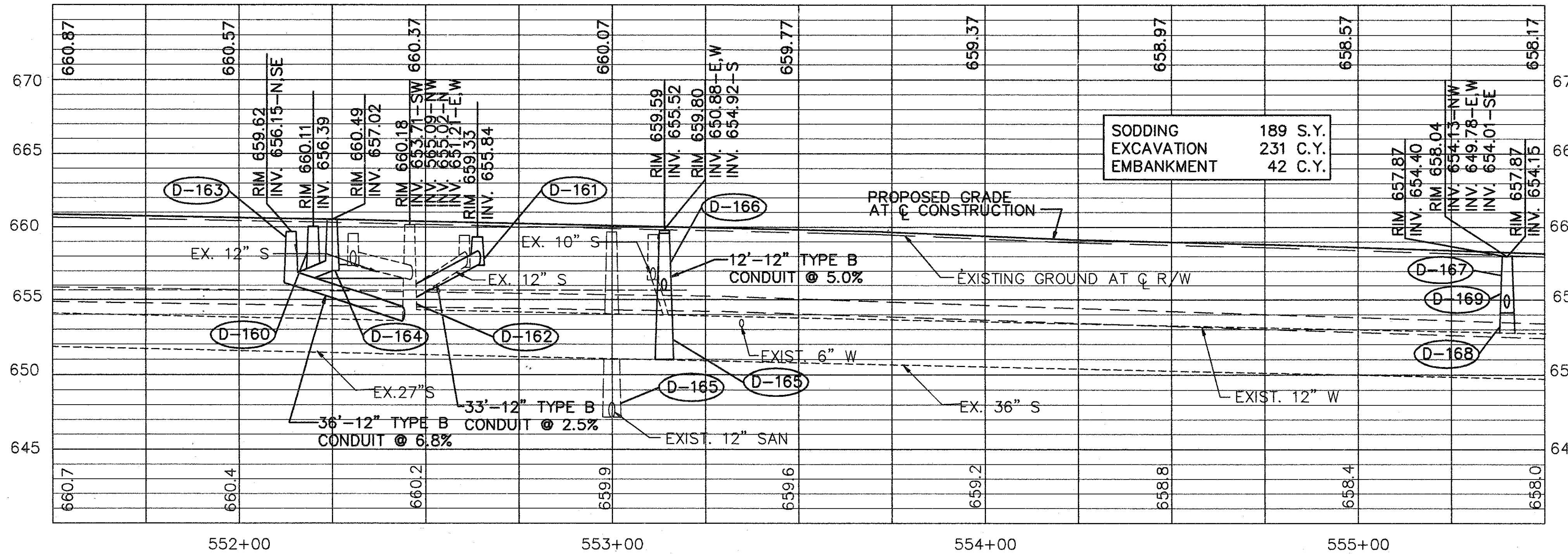


CURB RAMP SCHEDULE

STATION	TYPE
552+20, RT.	1
552+80, LT.	2
553+27, RT.	2
553+88, LT.	1
9+76, RT. (STATE ST.)	2
10+22, LT. (STATE ST.)	2

ROADWAY

REF.	FROM	TO	SIDE	SQ. FT.	SQ. FT.	LUMPLUMP	LUMPLUMP	SQ. FT.	EACH	EACH
R-160	551+50	553+03	LT.	440				488		2
R-161	551+50	552+58	RT.	595				350	1	
R-162	553+82	555+50	LT.	325	99			728	1	
R-163	552+60	555+50	RT.	981				1006		2
R-164	552+21		35'RT.			LUMP				
R-165	553+79		35'LT.			LUMP				
TOTAL				2341	99	LUMPLUMP		2572	2	4



SODDING 189 S.Y.
EXCAVATION 231 C.Y.
EMBANKMENT 42 C.Y.

- 1 PAVEMENT WIDENING LIMITS
- 2 FOR WALK REMOVAL LIMITS, SEE TYPICAL SECTIONS, SHEET 4
- 3 TO BE RELOCATED BY OTHERS
- 4 EXISTING CATCH BASIN OR MANHOLE & APPURTENANCES TO BE REMOVED. COST TO BE INCLUDED IN THE UNIT PRICE BID FOR THE APPROPRIATE ITEM 603 12" CONDUIT, TYPE B, AS PER PLAN.
- 5 EXISTING PIPE TO BE REMOVED. COST TO BE INCLUDED IN THE UNIT PRICE BID FOR THE APPROPRIATE ITEM 604 CONDUIT, TYPE B, AS PER PLAN.

DRAINAGE

REF.	FROM	TO	SIDE	LIN. FT.	EACH	EACH	EACH	EACH	LIN. FT.	LIN. FT.	CU. YD.	CU. YD.	SQ. YD.	
D-160	552+20		16.9'LT.	38		1					16.3	5.2	15.6	
D-161	552+64		16.9'LT.	33		1					13.6	6.2	18.4	
D-162	552+46		10'RT.				1							
D-163	552+14		26.1'RT.	36		1					17.2	6.7	20.1	
D-164	10+91 (STATE ST.)		22.4'RT.	28		1					8.9			
D-165	553+02		2'LT.				1							
D-166	553+14		20.5'RT.	12	1						7.0	2.2	6.6	
D-167	555+40		16.3'LT.	28		1					9.9	5.2	15.6	
D-168	555+40		10'RT.					1			1.6			
D-169	555+40		16.3'RT.	8		1					4.1	1.5	4.5	
D-170	10+71 (STATE ST.)		26'LT.				1							
D-171	553+14		10'RT.					1			2.8			
U-140	551+50	9+70 (STATE ST)	LT.							162	20			
U-141	551+50	11+10 (STATE ST)	RT.							113	20			
U-142	11+10 (STATE ST)	555+50	RT.							340	30			
U-143	553+85	555+50	LT.							175	10			
TOTAL				183	1	6		3	2	790	80	81.4	27.0	80.8