

PAVEMENT TRENCH,
SEE DETAIL, SHT. 20

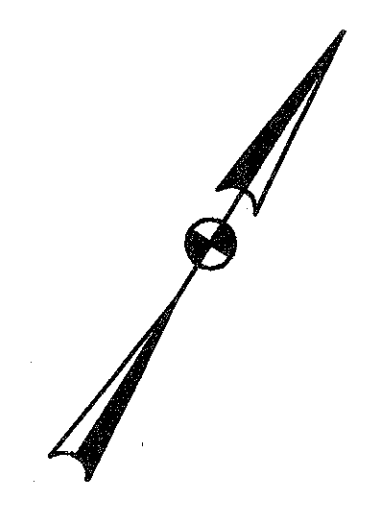
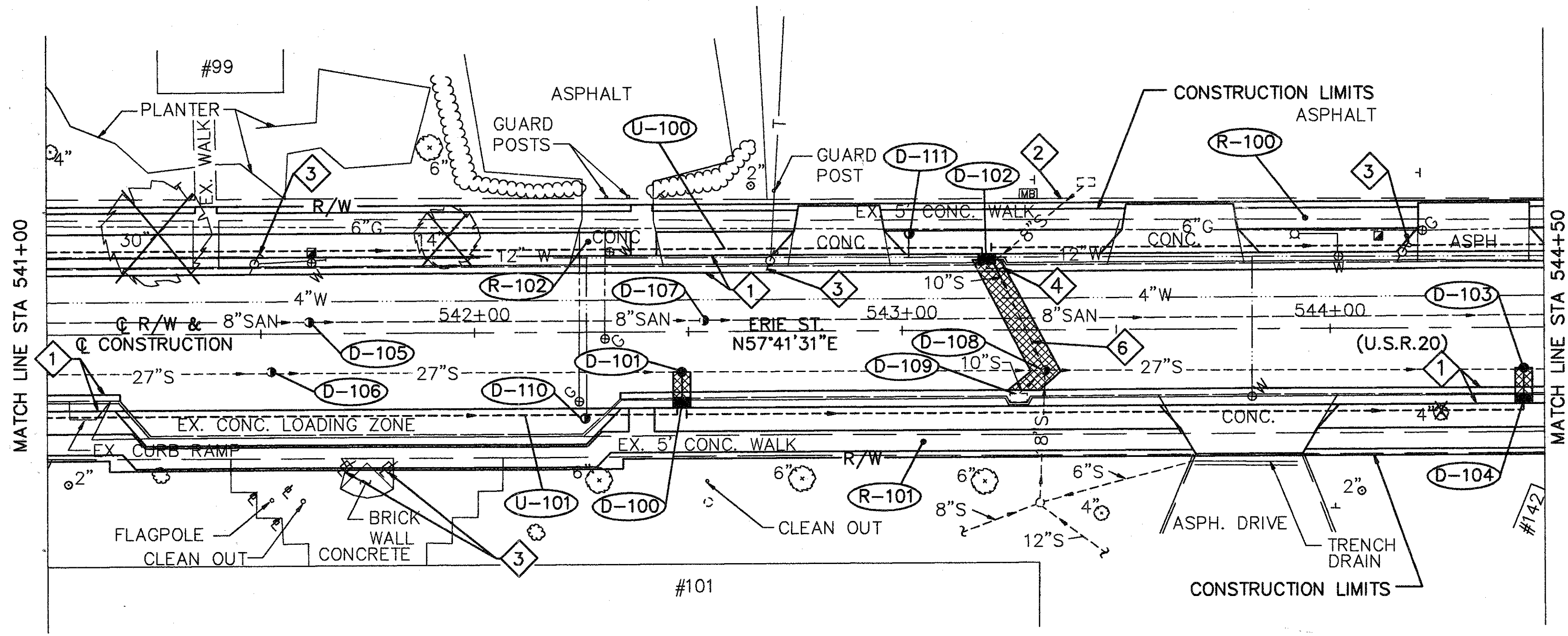
#135

CALC BY DAS
DATE 6/92
CHKD BY SJS
DATE 6/92

LAKE COUNTY
LAK-20-15.75

OHIO
FHWA REGION 5

26
80

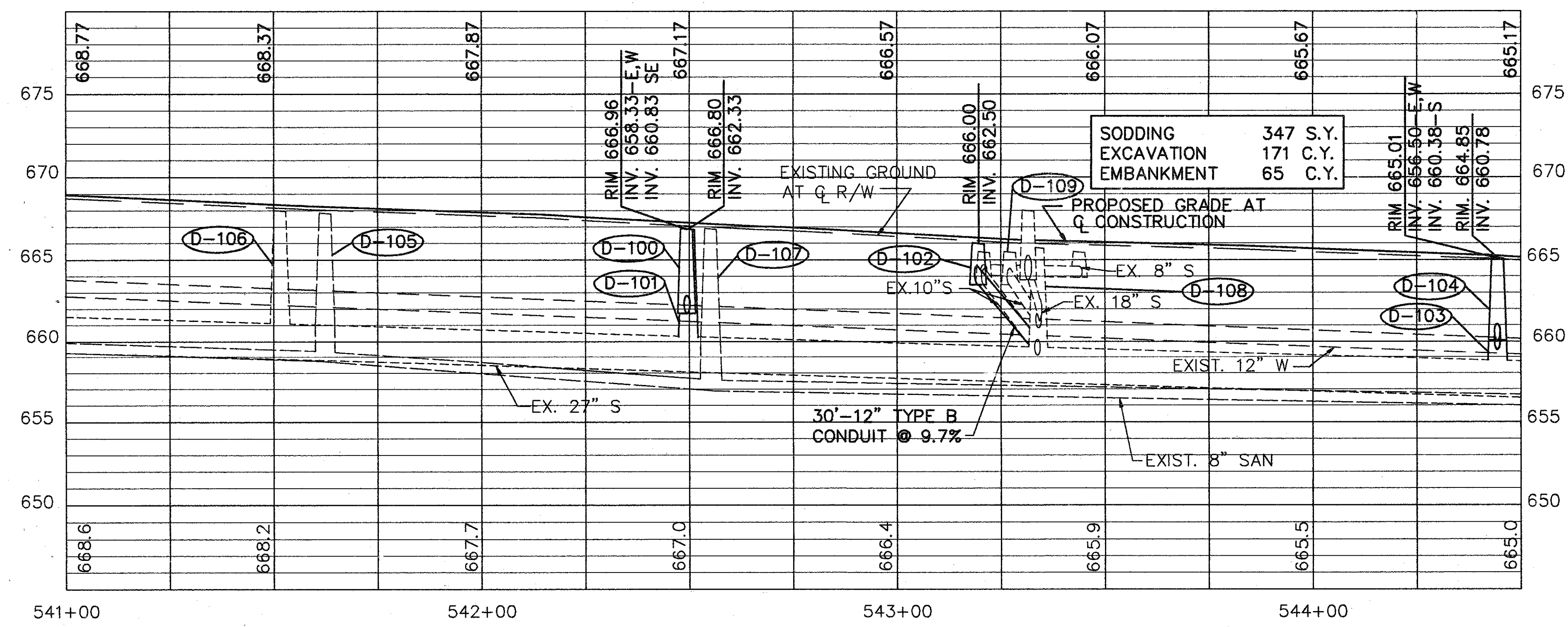


REF.	FROM	TO	SIDE	SQ. FT.	SQ. YD.	WALK REMOVED	PAVEMENT REMOVED	4\"/>	
R-100	541+00	544+50	LT.	1406				1355	1
R-101	541+00	544+50	RT.	1736				1648	1
R-102	542+22	542+44	LT.		23				
TOTAL				3142	23			3003	2

- 1 PAVEMENT WIDENING LIMITS
- 2 FOR WALK REMOVAL LIMITS, SEE TYPICAL SECTIONS, SHEET 4
- 3 TO BE RELOCATED BY OTHERS
- 4 EXISTING CATCH BASIN OR MANHOLE & APPURTENANCES TO BE REMOVED. COST TO BE INCLUDED IN THE UNIT PRICE FOR THE APPROPRIATE ITEM 604 CATCH BASIN OR MANHOLE.
- 6 EXISTING PIPE TO BE REMOVED. COST TO BE INCLUDED IN THE UNIT PRICE BID FOR THE APPROPRIATE ITEM 603 12\"/>

STATION	TYPE
542+39, LT.	2
542+39, RT.	2

* 707.17 NONPERFORATED, ASTM D-3034 SDR35, SS931 OR SS944



REF.	FROM	TO	SIDE	LIN. FT.	603	604	604	604	202	605	SPEC.	603	301	202	202
D-100	542+50		16.9'RT	8	1							6.1	1.5	4.5	
D-101	542+51		9'RT				1					4.4			
D-102	543+20		16.9'LT	30	1							14.5	16.7	5.6	
D-103	544+46		9'RT				1					2.5			
D-104	544+45		16.9'LT	8	1							4.9	1.5	4.5	
D-105	541+61		3'LT					1							
D-106	541+52		9'RT					1							
D-107	542+53		3'LT					1							
D-108	543+33		10'RT					1							
D-109	543+27		17'RT						1			8.3	1.8	5.4	10
D-110	542+25		20'RT.						1						
D-111	543+03		23'LT.						1						
U-100	541+00	544+50	LT.							350		10			
U-101	541+00	544+50	RT.							350		20			
TOTAL				46	3	2	6	1	700	40.7	30	21.5	20.0	10	

STA. 541+00 TO STA. 544+50