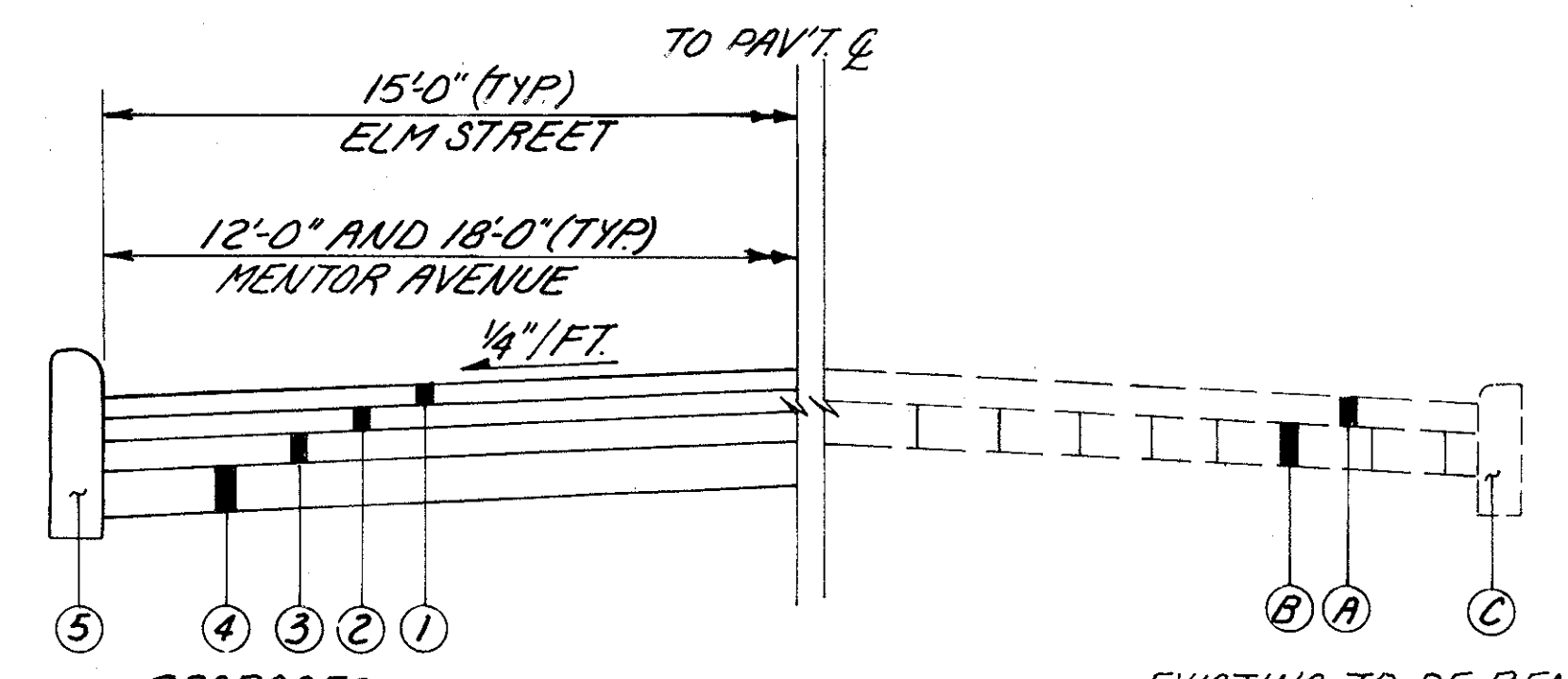


MISCELLANEOUS DETAILS

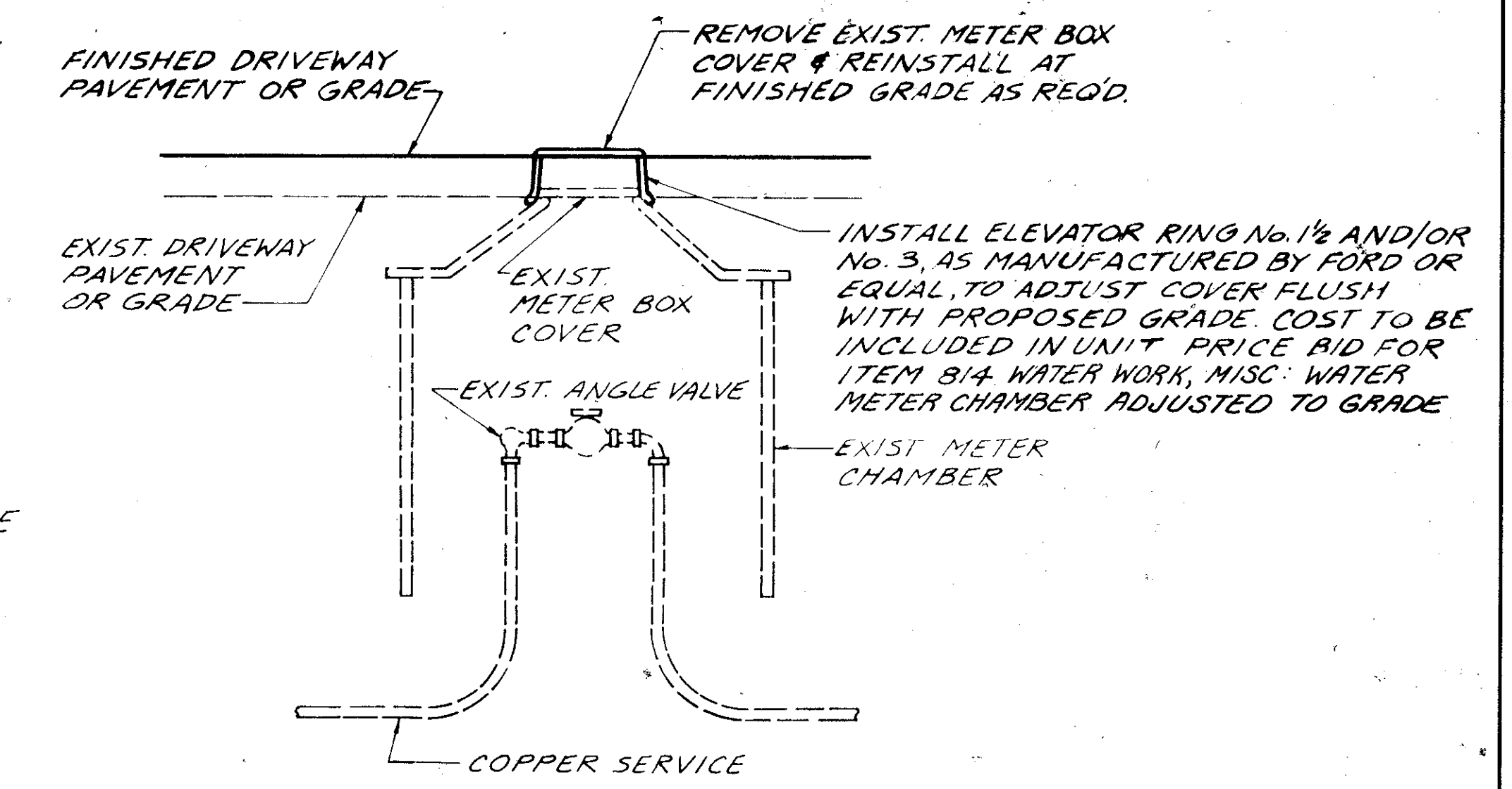


- PROPOSED**
- ① ITEM 404 1 1/2" ASPHALT CONCRETE, AC-20
 - ② ITEM 402 1 3/4" ASPHALT CONCRETE, AC-20
 - ③ ITEM 301 6" BITUMINOUS AGGREGATE BASE, AC-20
 - ④ ITEM 304 6" AGGREGATE BASE
 - ⑤ ITEM 609 CURB, TYPE 6
- EXISTING TO BE REMOVED**
- Ⓐ EXISTING ASPHALT (VARIABLE DEPTH 0" TO 12")
 - Ⓑ EXISTING 4" BRICK
 - Ⓒ EXISTING CONCRETE CURB

NOTE: SEE SHEETS 10-14 FOR QUANTITIES

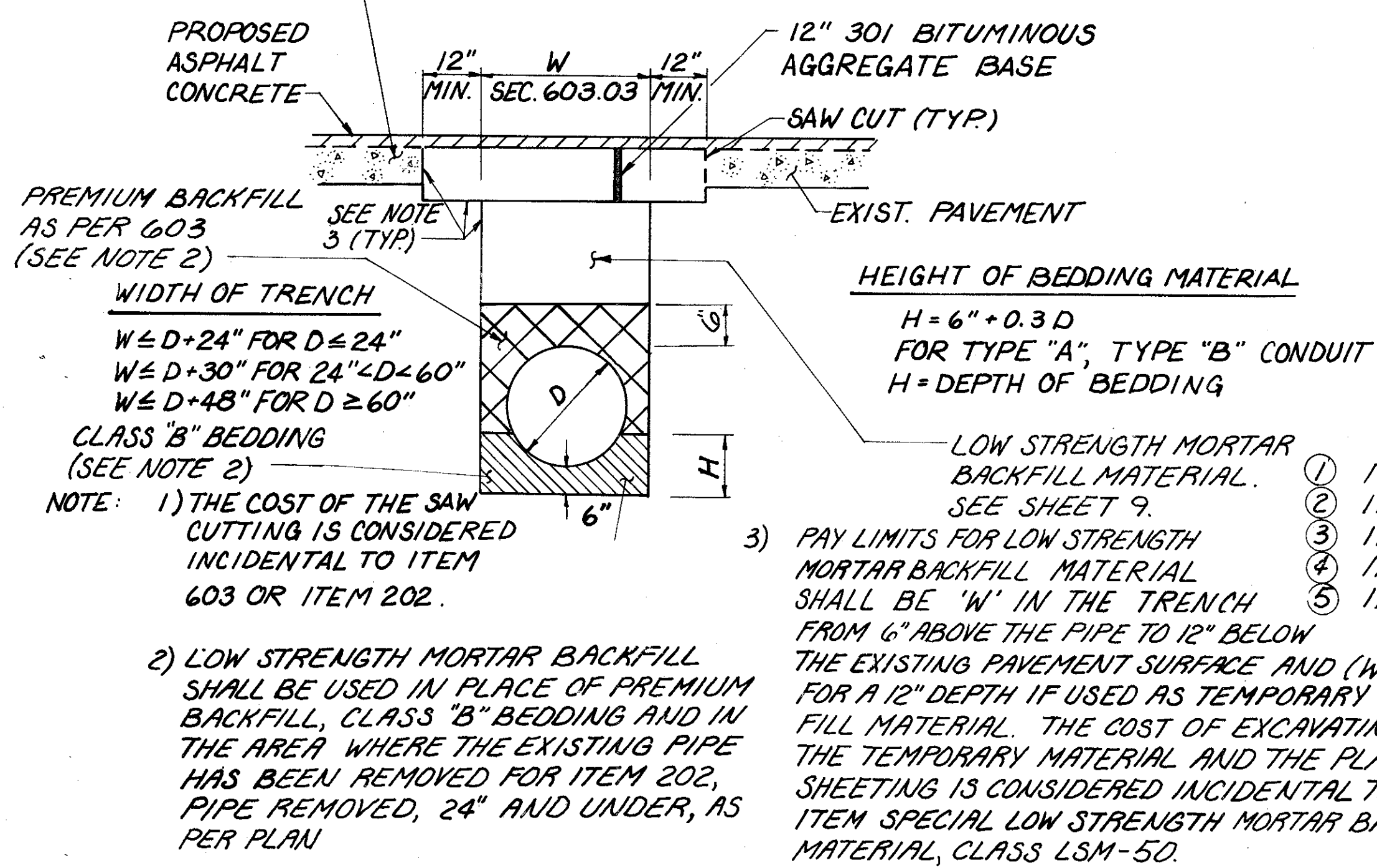
BUTT JOINT DETAIL FOR BRICK STREETS

NOT TO SCALE



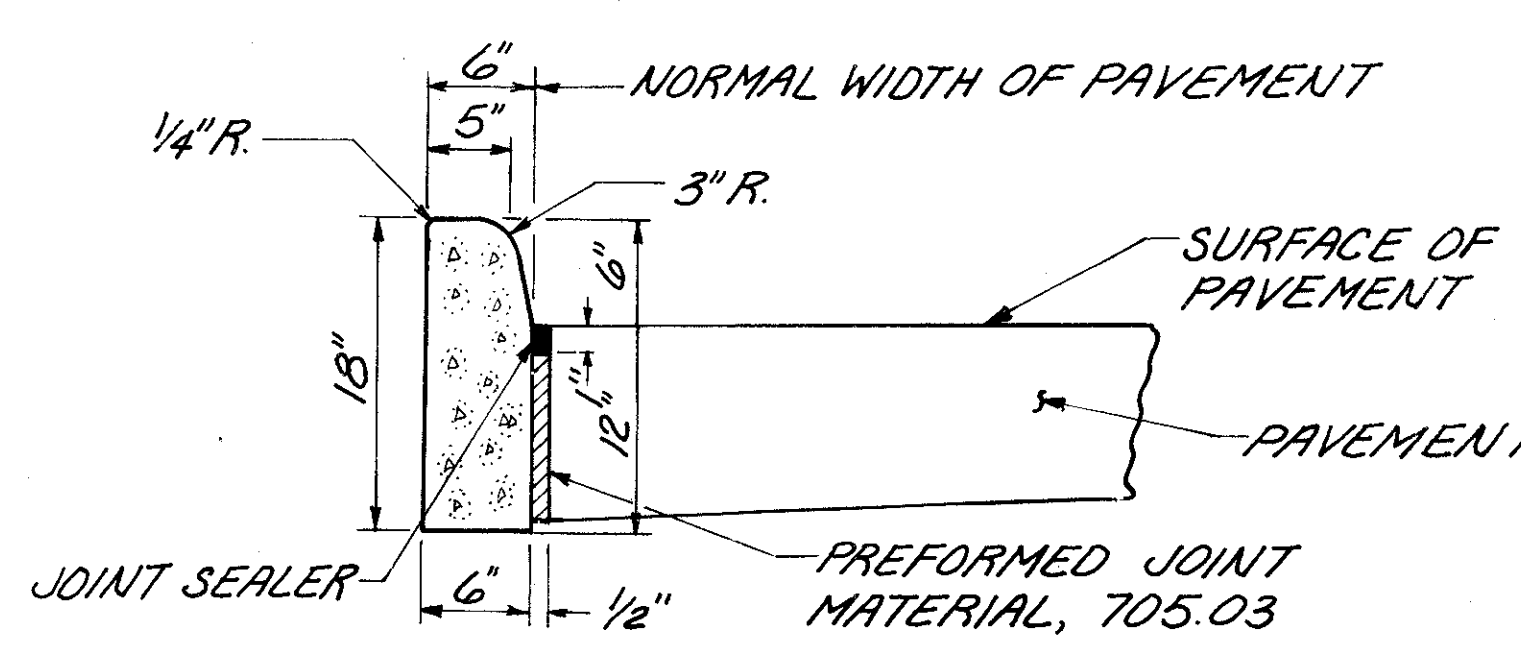
ITEM 638 WATER WORK, MISC: WATER METER CHAMBER ADJUSTED TO GRADE

NOT TO SCALE



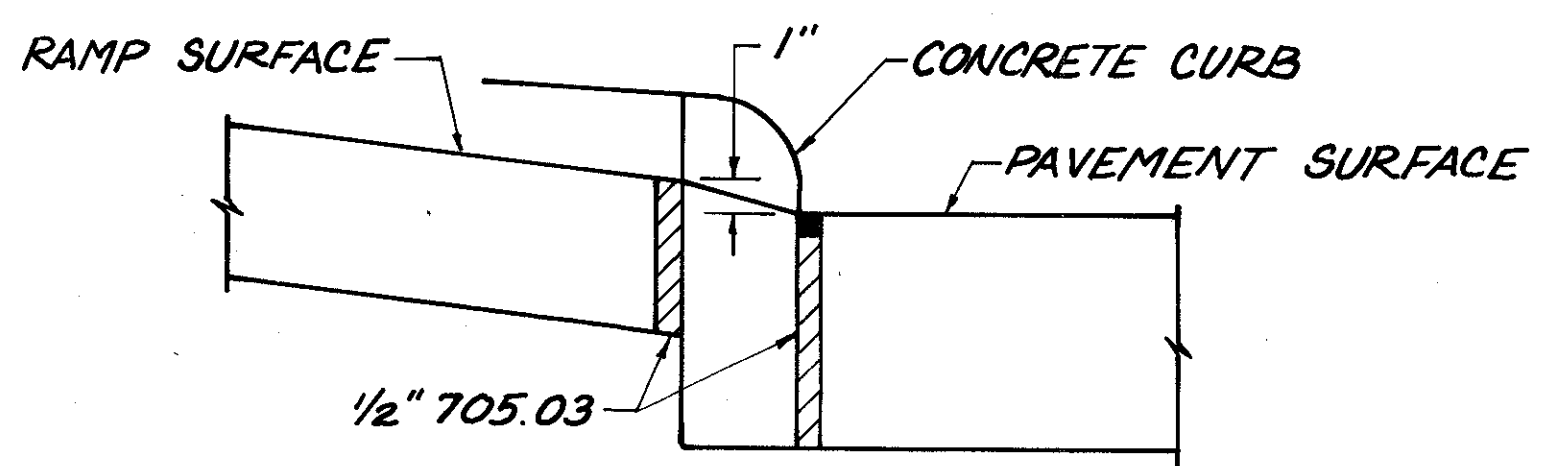
REPAIR OF TRENCH PAVEMENT OPENING

NOT TO SCALE



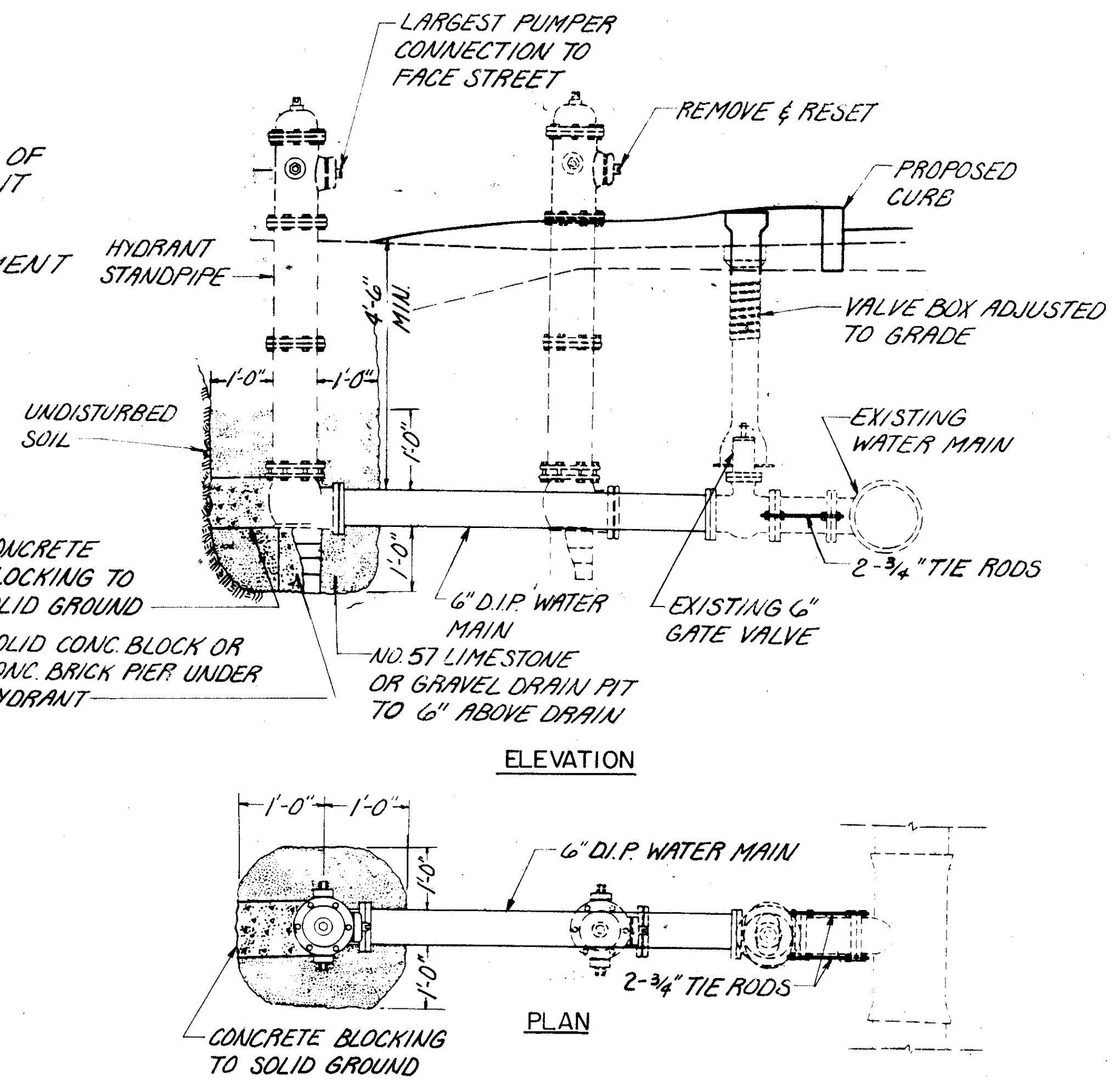
ITEM 609 CURB, TYPE 6

NOT TO SCALE



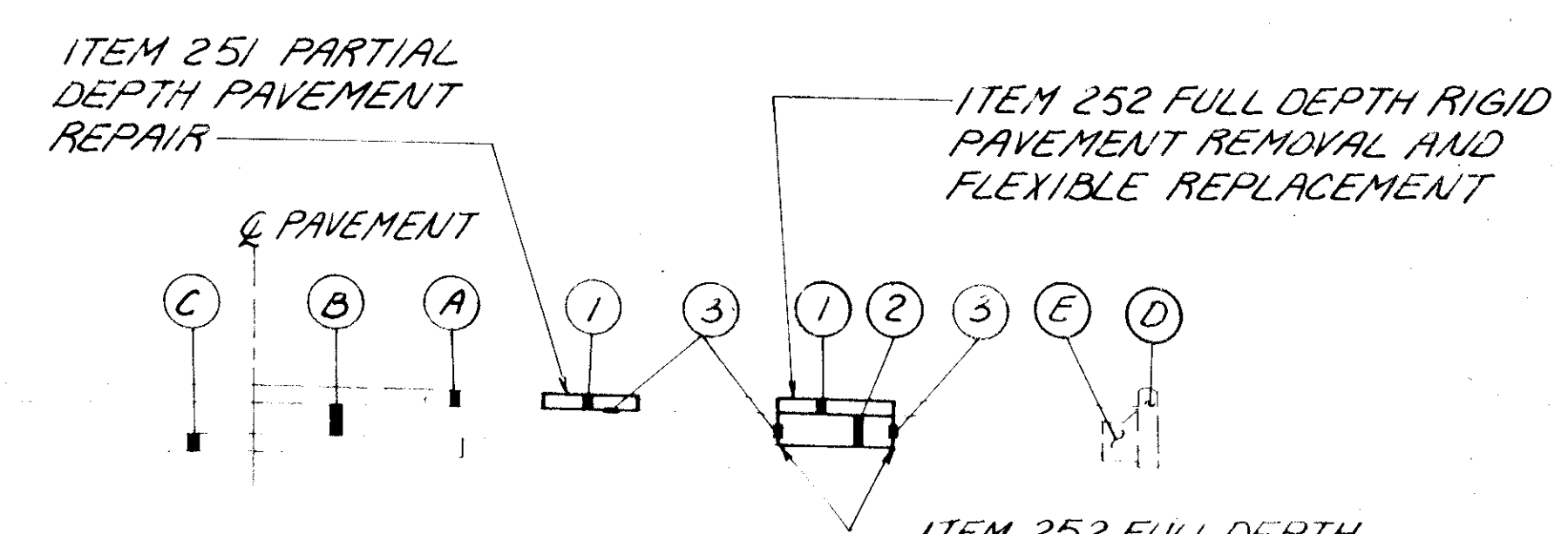
TYPICAL CURB RAMP SECTION

NOT TO SCALE



FIRE HYDRANT-REMOVED AND RESET

NOT TO SCALE



- Ⓐ EXISTING ASPHALT CONCRETE (VARIABLE DEPTH 1" TO 5")
- Ⓑ EXISTING 4" BRICK
- Ⓒ EXISTING GRANULATED SLAG
- Ⓓ EXISTING CONCRETE CURB
- Ⓔ EXISTING CONCRETE CURB AND GUTTER (STA. 527 + 71.51 TO STA. 553 + 01.05)
- ① ITEM 402 VARIABLE DEPTH (1"-5") ASPHALT CONCRETE (AC-20)*
- ② ITEM 301 4" BITUMINOUS AGGREGATE BASE*
- ③ ITEM 407 TACK COAT*

NOTE: PAVEMENT REPAIR LIMITS ARE TO BE DETERMINED BY THE ENGINEER

* COSTS FOR ITEMS 301, 402 AND 407 FOR PAVEMENT REPAIR ARE INCLUDED IN THE UNIT PRICE BIDS FOR ITEM 251 PARTIAL DEPTH PAVEMENT REPAIR AND ITEM 252 FULL DEPTH RIGID PAVEMENT REMOVAL AND FLEXIBLE REPLACEMENT. SEE THE 'PAVEMENT REPAIRS' NOTE ON SHEET 8.

PAVEMENT REPAIR DETAIL

NOT TO SCALE