

STATE OF OHIO
DEPARTMENT OF TRANSPORTATION

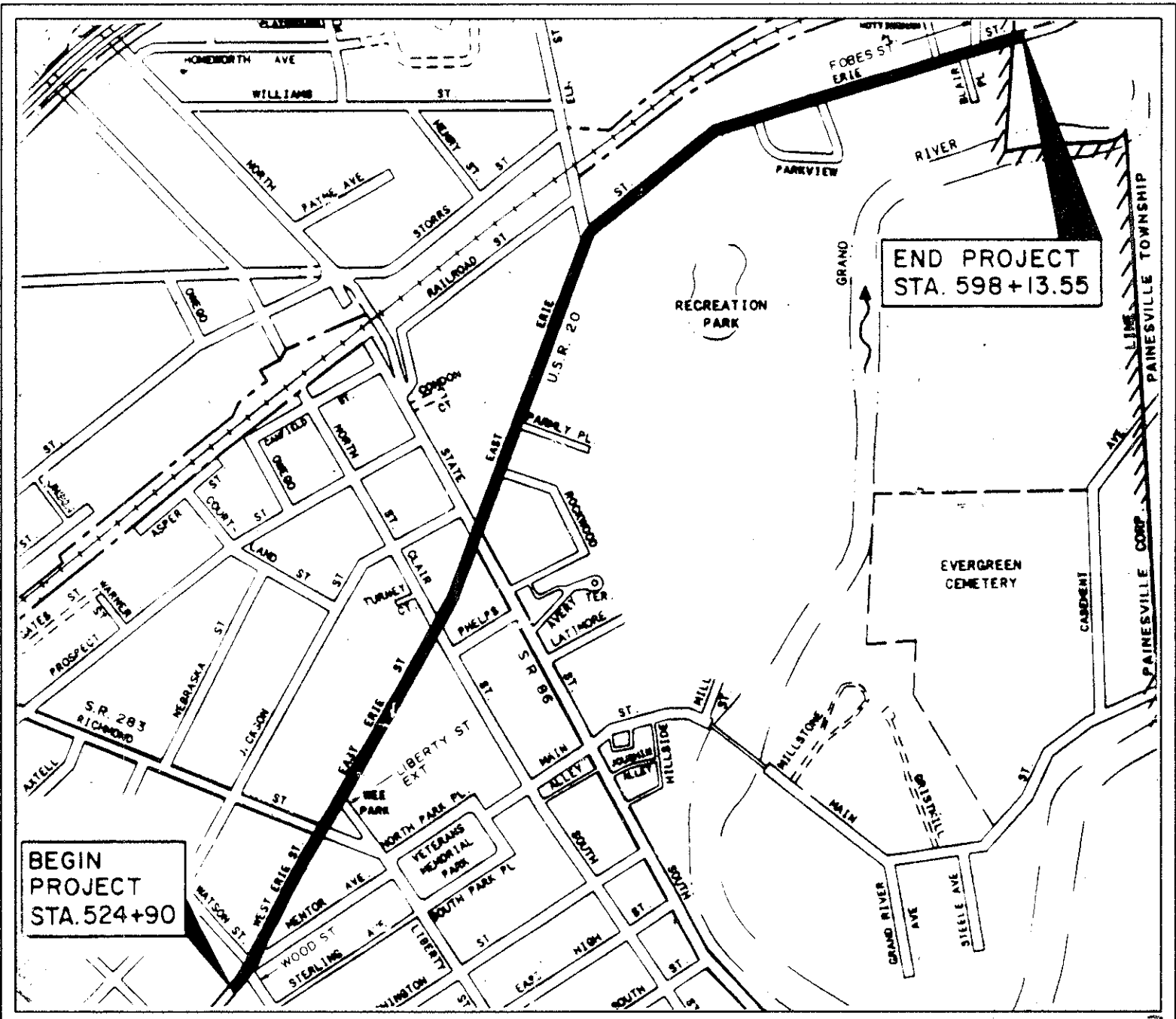
LAK-20-15.75

CITY OF PAINESVILLE/PAINESVILLE TOWNSHIP
LAKE COUNTY

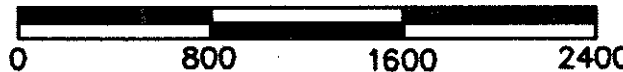
- CONVENTIONAL SIGNS**
- 1-H Pavement Walks, Etc.
- Proposed Pavement
- Mailbox MB
- Manholes: Existing To Be Reset Proposed
- Inlets And Catch Basins: Existing To Be Reset Proposed
- Water Valve Gas Valve
- Center Line 352 353
- Trees ; Stump ; Pine Trees ; Hedge
- Bush ; (to be removed)
- Utility Poles: Telephone ; Power ; Light ; Signal
- Utility Lines: Water W Storm Sewer S Sanitary SAN Electric E Telephone T
- Yard Light Non-Utility Pole
- Guy Wire on Utility Pole
- Water Meter: Existing To Be Reset
- Gasoline Pump Islands or PUMPS
- Construction Limits
- Signs: Exist. Prop.
- Commercial
- Corporation Line
- Fence Line (existing) (proposed)
- Existing Right of Way R/W
- Work Agreement W/A
- Property Line
- Railroad
- Guardrail (existing) (proposed)
- Streams
- Fire Hydrants (existing) (proposed)
- Traffic Signal Pull Box: Existing
- Traffic Signal Controller Box:
- Monument Box: Existing Adjust to Grade Proposed

INDEX OF SHEETS

DESCRIPTION	SHEET NO.
TITLE SHEET	1
SCHEMATIC PLAN	2
TYPICAL SECTIONS	3-6
GENERAL NOTES	7-9, 9A
CALCULATIONS	10-14
GENERAL SUMMARY	15-17
DRIVE TABLES	18-19
MISC. DETAILS	20, 20A
PLAN & PROFILE	21-36
CROSS SECTIONS	37-66
STORM SEWER PROFILES	66A
INTERSECTION DETAILS	67-70
PAVEMENT MARKING & SIGNING	71-76
OMIT	77, 78, 79, 80



LOCATION MAP
SCALE IN FEET



UNDERGROUND UTILITIES

2 WORKING DAYS
BEFORE YOU DIG

CALL 800-362-2764 (TOLL FREE)
OHIO UTILITIES PROTECTION SERVICES

NON-MEMBERS
MUST BE CALLED DIRECTLY

1993 SPECIFICATIONS

The standard specifications of the State of Ohio, Department of Transportation, including changes and supplemental specifications listed in the proposal shall govern this improvement.

I hereby approve these plans and declare that the making of this improvement will not require the closing to traffic of the highway and that provisions for the maintenance and safety of traffic will be as set forth on the plans and estimates.

LINE DATA

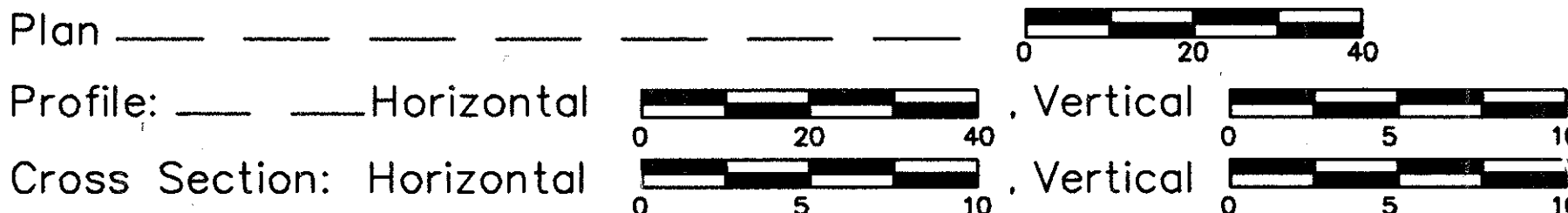
	City Of Painesville	Painesville Township	Totals
Begin Project	Sta. 524+90	Sta. 597+68.62	Sta. 524+90
End Project	Sta. 597+68.62	Sta. 598+13.55	Sta. 598+13.55
Additions And Deduction	-6.01 L.F.	0 L.F.	-6.01 L.F.
Length Of Project	7272.61 L.F. Or 1.377 Mi.	44.93 L.F. Or 0.009 Mi.	7317.54 L.F. Or 1.386 Mi.
Begin Work	Sta. 524+85	Sta. 597+68.62	Sta. 524+85
End Work	Sta. 597+68.62	Sta. 598+20	Sta. 598+20
Additions And Deduction	-6.01 L.F.	0 L.F.	-6.01 L.F.
Length Of Work	7277.61 L.F. Or 1.378 Mi.	51.38 L.F. Or 0.010 Mi.	7328.99 L.F. Or 1.388 Mi.

Plan Prepared By:
BURGESS & NIPLE, LIMITED
ENGINEERS AND ARCHITECTS
100 WEST ERIE STREET
PAINESVILLE, OHIO
FOR THE STATE OF OHIO

Portion to be improved
State & Federal Routes

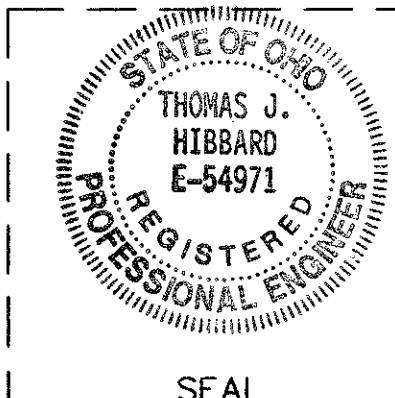
Other Roads

SCALES



SUPPLEMENTAL SPECIFICATIONS

944	3-18-92
852	6-10-87
952	12-14-88
931	3-18-92



SUPPLEMENTAL PRINTS OF STANDARD CONSTRUCTION DRAWINGS

BP1.1 (2-21-92)	CB-3 (5-1-79)	MC-1 (6-13-69)	TC-41.10 (8-29-84)	MT-97.10 (4-29-88)
BP2.1 (2-21-92)	CB-3A (5-1-79)	MC-4 (7-26-76)	TC-41.20 (3-26-79)	MT-97.11 (10-4-89)
BP2.2 (2-21-92)	CB-6 (5-1-79)	MC-11 (8-1-78)	TC-41.40 (6-18-79)	MT-99.10 (11-14-86)
BP3.1 (2-21-92)			TC-42.20 (3-26-79)	MT-99.20 (4-29-88)
BP4.1 (2-21-92)	MH-1 (12-18-84)		TC-52.10 (4-3-79)	MT-105.10 (7-1-92)
BP5.1 (2-21-92)	MH-3 (12-18-84)		TC-52.20 (4-3-79)	MT-105.11 (7-1-92)
BP7.1 (10-30-92)	MH-5 (6-12-75)			
	I-1 (12-18-84)			

- Approved JEM
Date 5-24-93 Engineer of Bridges
- Approved
Date 3/15/93 City Manager, City of Painesville
- Approved Gary Payne
Date 3-15-93 City Engineer, City of Painesville
- Approved Bryan Stodden
Date 5-3-93 District Deputy Director of Transportation
- Approved Alexander H. Hynds
Date 2-17-93 Deputy Director of Operations
- Approved Jerry Wray
Date 2-17-93 Director, Department of Transportation

DEPARTMENT OF TRANSPORTATION
FEDERAL HIGHWAY ADMINISTRATION

APPROVED: _____

DIVISION ADMINISTRATION _____ DATE _____

Project: LAK-20-15.75
Date of Letting 19 Contract No. _____