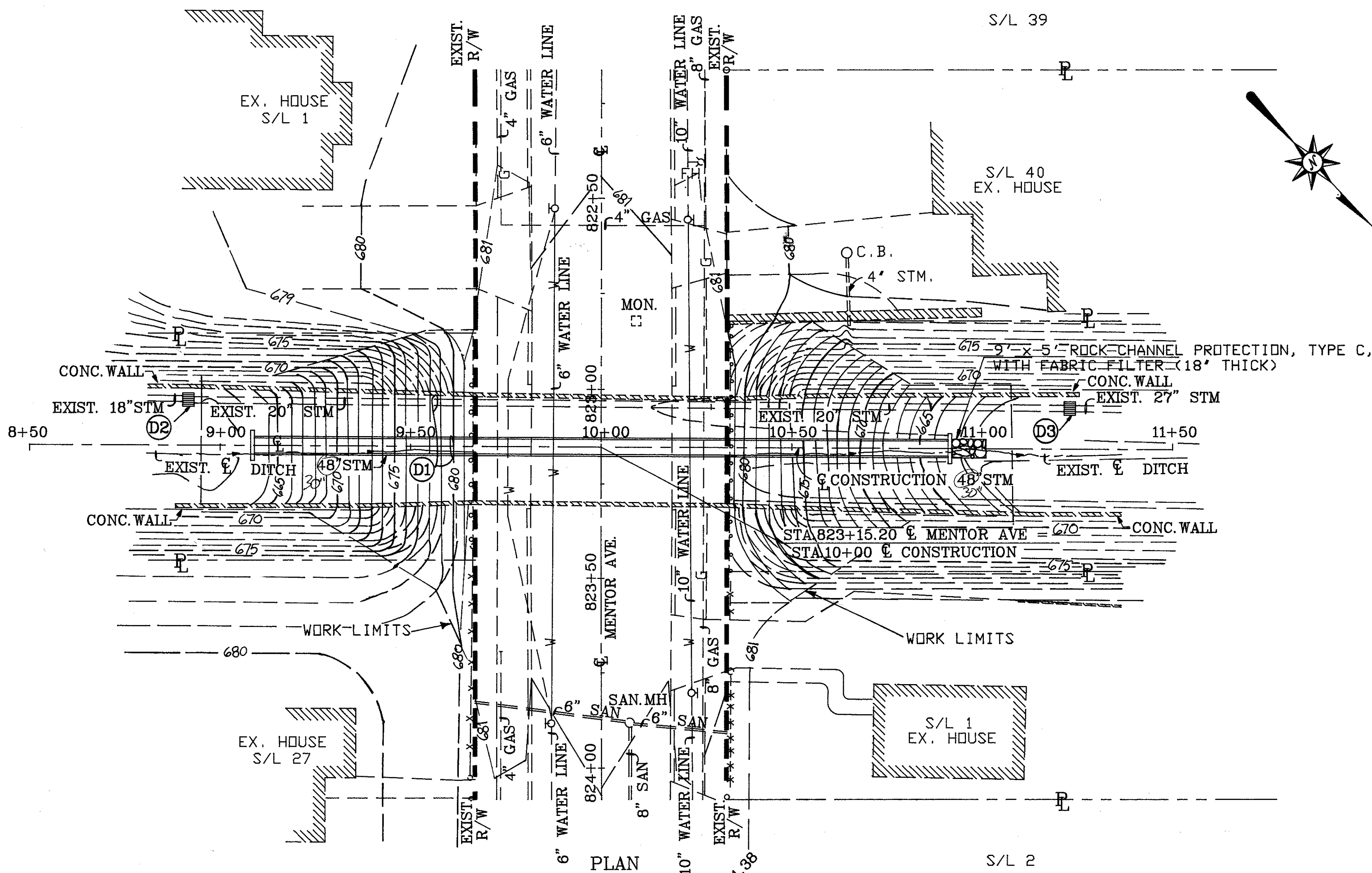


MENTOR AVENUE 66'



FHWA REGION	STATE	PROJECT	
5	DHID	NH - 69(123)	

LAKE COUNTY
LAK-20-15.58

10
15

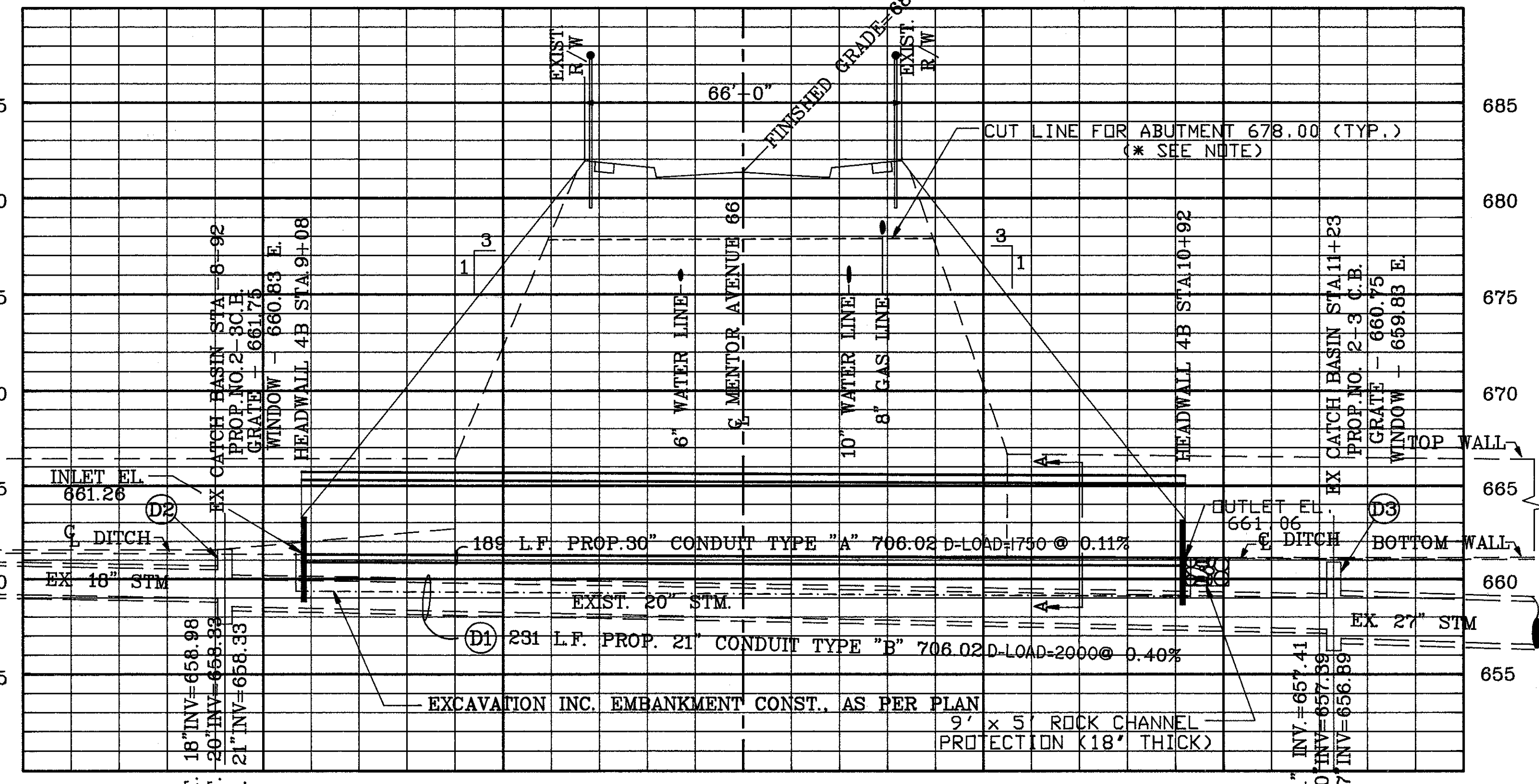
ESTIMATED QUANTITIES COMPUTED BY: R.J.K.
CHECKED BY: K.P.

ITEM	DESCRIPTION	QTY
202	PORTIONS OF STRUCTURE REMOVED	LUMP
202	PIPE REMOVED, 24" AND UNDER	231 LIN.FT.
602	CONCRETE MASONRY	1.10 CU.YD.
603	30" CONDUIT TYPE A 706.02,D-LOAD=1750	189 LIN.FT.

DRAINAGE

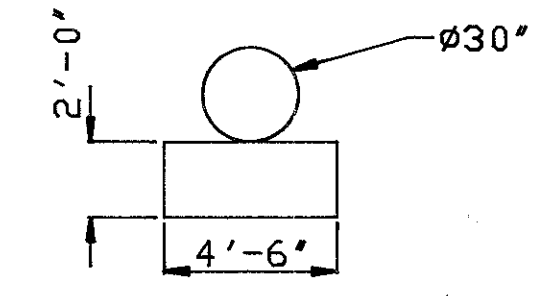
REF.	CENTERLINE STATION		SIDE	OFFSET	21" CONDUIT TYPE B 706.02 D-LOAD=2000	CATCH BASIN TYPE 2-3
	FROM	TO				
					603	604
D1	823 + 04		RT<		231	
D2	823 + 04		RT	108		1
D3	823 + 04		LT	123		1
TOTAL					231	2

QUANTITY CARRIED TO GENERAL SUMMARY



PROFILE ALONG C OF 30" SEWER (STA.823+15.20)
(21" STORM SEWER AT STA.823+04)

ITEM 203 - EXCAVATION INCLUDING EMBANKMENT CONSTRUCTION, AS PER PLAN



VOLUME = ((4.5 x 2) x (189+11)) : 27 = 64.00 CU. YD.

ITEM 601 - ROCK CHANNEL PROTECTION, TYPE C, 18" THICK, WITH FABRIC FILTER

VOLUME = ((9 x 5) 1.5) : 27 = 2.50 CU. YD.

NOTE:
PORTION OF STRUCTURE REMOVED;
THE SUPER STRUCTURE SHALL BE REMOVED COMPLETELY.
THE SUBSTRUCTURE SHALL BE REMOVED TO AN ELEVATION
OF 678.00 (BOTH ABUTMENTS).

RALPH C. TYLER P.E., P.S., INC.
CIVIL ENGINEERS & LAND SURVEYORS
2143 FAIRHILL ROAD CLEVELAND, OHIO 44106

**PLAN AND PROFILE
STORM CULVERT**

DESIGNED	DRAWN	CHECKED	REVIEWED	DATE	REVISED
RK	GG	KP	FGC		