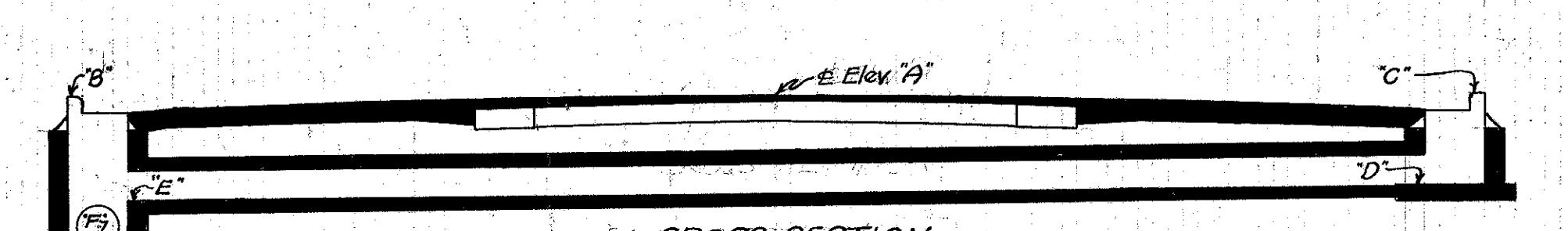
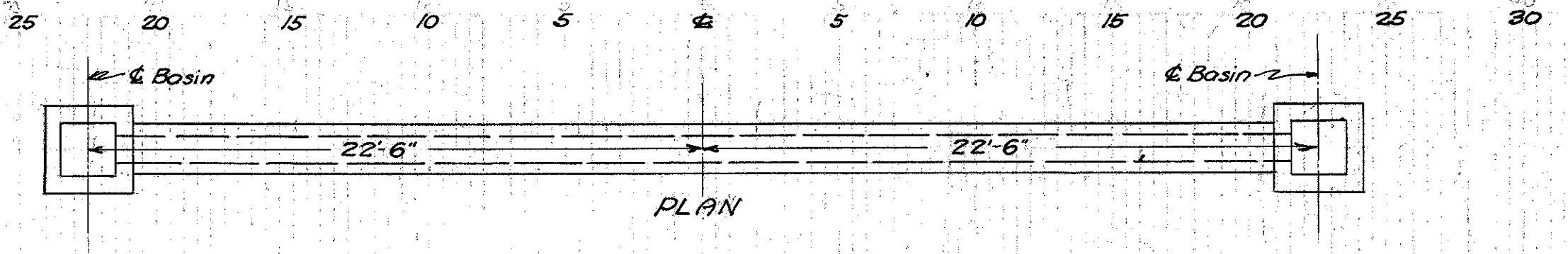


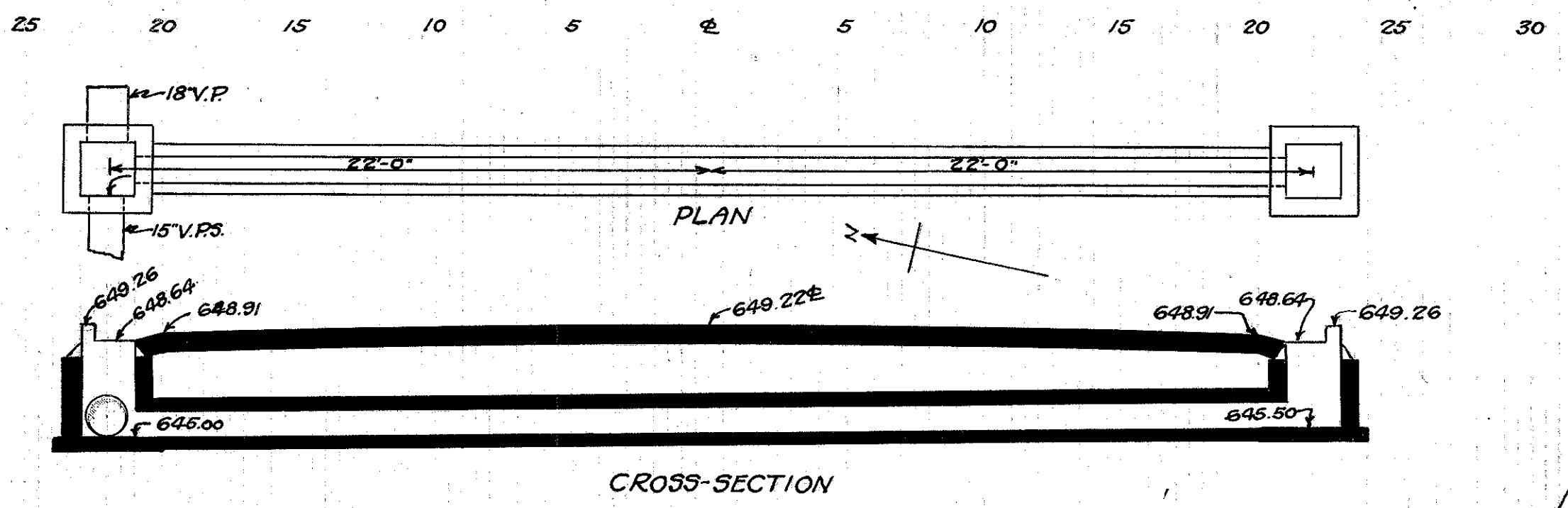
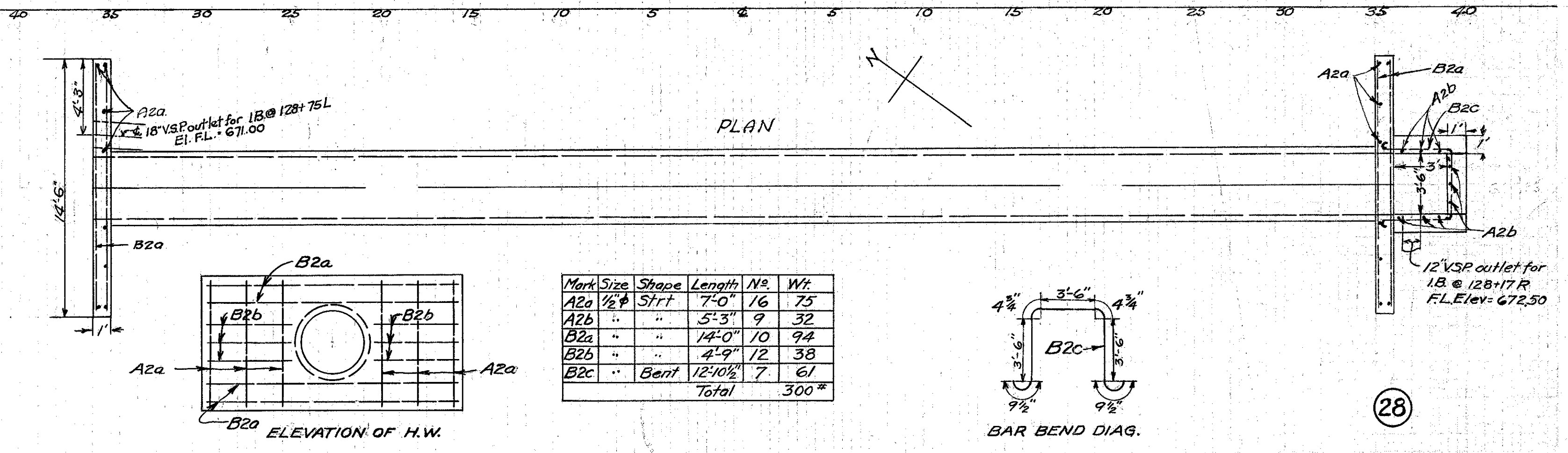
Type: Std. V.P. enc. culvert Dr. #300
 Size: 12' x 45'
 Work Req.: Build 12' x 45' Std. V.P. enc. culvert with I.B. R.L.
 Drawn by: Plummer Checked by: Div'n Engr.
 Date: 8/29/32

Basin No.	Culvert No.	Station	12" V.P. on L.	12" V.P. on R.	Excav. Cu. Yds.	Inlet Basins
	2	18+50	652.56	652.52	10.0	2
	3	21+25	653.91	653.87	10.0	2
	4	25+15	656.76	656.72	10.0	2
	5	26+10	658.19	658.15	10.0	2
13		28+75 L	661.04	661.00	10.0	1
	6	32+0	662.32	662.28	10.0	2
	7	35+50	663.38	663.34	10.0	2
	8	39+0	664.36	664.32	10.0	2
	9	46+55	657.18	657.14	10.0	2
22		50+0 R	637.51	637.47	10.0	1
23		52+75 R	625.40	625.36	10.0	1
24		52+75 L	625.40	625.36	10.0	1
25		53+25 R	625.49	625.45	10.0	1
26		53+25 L	625.49	625.45	10.0	1
	10	56+50	639.72	639.68	10.0	2
29		59+85 L	659.62	659.58	10.0	1
30		62+25 L	666.46	666.42	10.0	1
	11	64+50	670.76	670.72	10.0	2
	12	68+0	672.18	672.14	10.0	2
	13	71+0	673.08	673.04	10.0	2
	14	74+50	674.11	674.07	10.0	2



Type: Std. V.P. enc. culvert Dr. #300
 Size: 12' x 43'
 Work Req.: Build 12' x 43' Std. V.P. enc. culvert with I.B. R.L.
 Drawn by: Plummer Checked by: Div'n Engr.
 Date: 8/29/32

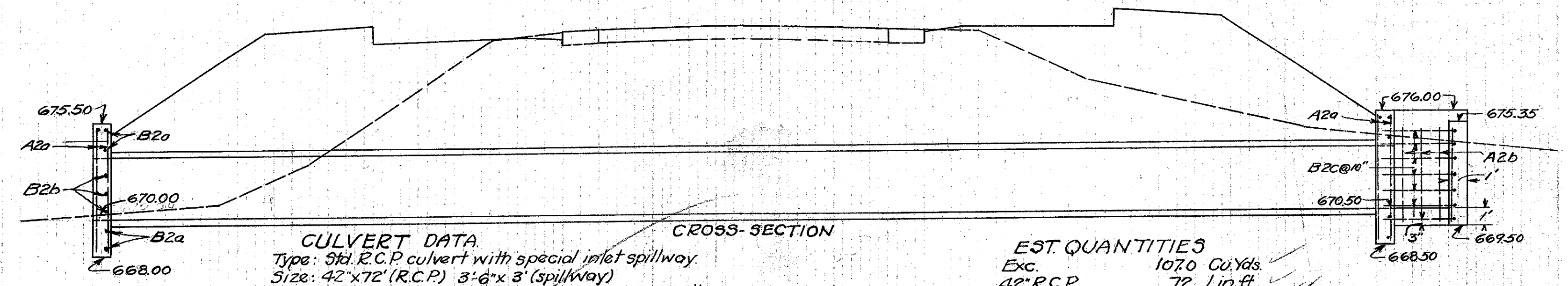
Basin No.	Culvert No.	Station	12" V.P. on L.	12" V.P. on R.	Excav. Cu. Yds.	Inlet Basins
	15	78+0	675.16	675.12	10.0	2
	16	81+0	676.09	676.05	10.0	2
	17	84+25	677.91	677.87	10.0	2
	18	87+25	683.55	683.51	10.0	2
	19	91+0	688.77	688.73	10.0	2
	20	99+0	690.12	690.08	10.0	2
	21	102+50	689.25	689.21	10.0	2
	22	105+50	688.68	688.64	10.0	2
	23	108+50	691.00	690.96	10.0	2
	24	116+0	689.75	689.71	10.0	2
	25	119+25	687.88	687.84	10.0	2
	26	122+50	686.53	686.49	10.0	2
	27	125+25	685.51	685.47	10.0	2
65		128+17 R	681.36	681.32	10.0	1
66		128+75 L	680.96	680.92	10.0	1
	29	132+17	684.59	684.55	10.0	2
	30	136+50	686.01	685.97	10.0	2
	31	140+50	687.04	687.00	10.0	2



CULVERT DATA
 Type: Std. V.P. enc. culvert Dr. #300
 Size: 12' x 42'
 Work Req.: Build Std 12' x 42' Std. V.P. enc. culvert with Std. I.B. R.L.

EST. QUANTITIES
 Exc. 13 Cu. Yds.
 12" V.P. enc. 42 Lin. Ft.
 I.B.s. Complete 2

Drawn by: Plummer Date: 7/13/32
 Checked by: Div'n Engr. Date: Sta. 15+50



CULVERT DATA
 Type: Std. R.C.P. culvert with special inlet spillway
 Size: 42' x 72' (R.C.P.) 3'-6" x 3' (spillway)
 Work Req.: Remove exist. masonry structure and build 42' x 72' R.C.P. culv. with H.W. 15' L. on R. build special inlet-spillway in connection with H.W. Leave 18" V.S.P. thru H.W. on L. 12" V.S.P. thru spillway on R.

EST. QUANTITIES
 Exc. 107.0 Cu. Yds.
 42" R.C.P. 72 Lin. Ft.
 Con. 1-5/2 9.75 Cu. Yds.
 Reinf. Steel 300 Lbs.
 Masonry Rem. 33 Cu. Yds.

Drawn by: Plummer Date: 8/30/32
 Checked by: Div'n Engr. Date: Sta. 128+73