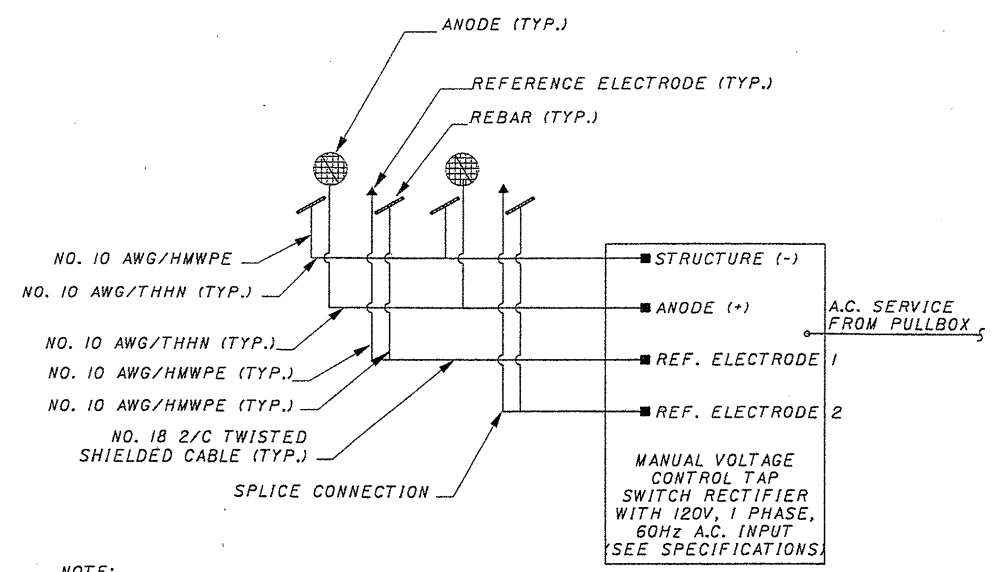
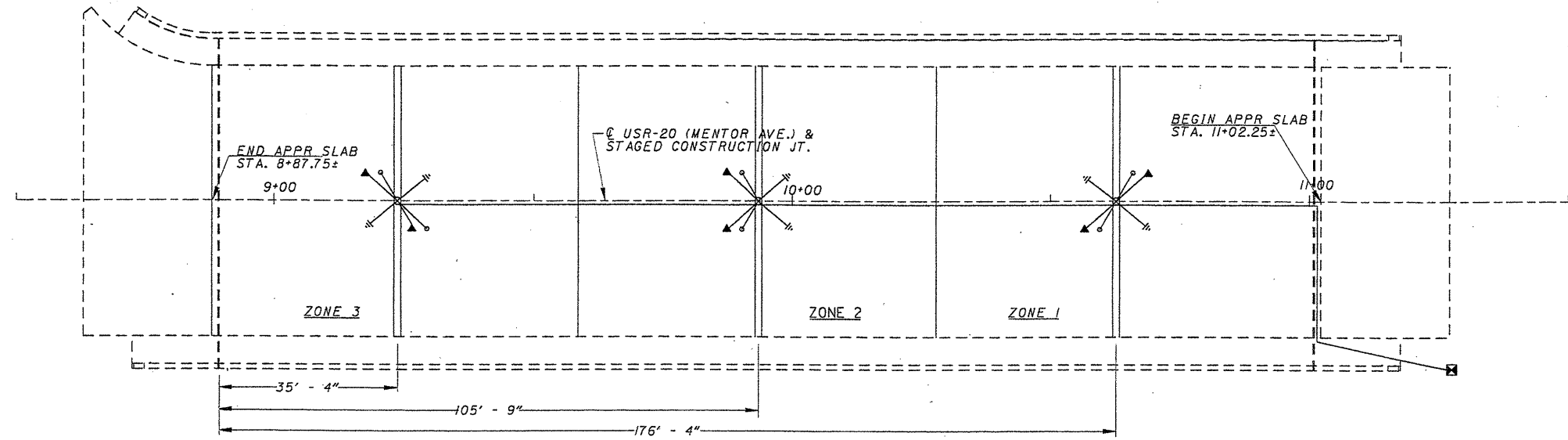


CATHODIC PROTECTION SYMBOL LEGEND

- ⊠ IMPRESSED CURRENT RECTIFIER
- ⊗ ACCESS HOLE
- ⊥ STRUCTURE NEGATIVE
- ≡≡≡ DOUBLE CURRENT DISTRIBUTOR
- PVC CONDUIT
- ZONE BOUNDARY
- REFERENCE ELECTRODE STRUCTURE CONNECTION
- ▲ REFERENCE ELECTRODE



NOTE:
 ALL WIRES MUST BE PERMANENTLY LABELED:
 A - ANODE
 SN - STRUCTURE NEGATIVE
 RE - REFERENCE ELECTRODE
 RS - REFERENCE ELECTRODE STRUCTURE

RECTIFIER SCHEDULE
 LAK-20-1434
 18V - 8A

BRIDGE LAK-20-1434
 SCHEMATIC

CLEVELAND • ATLANTA • CHICAGO
 HOUSTON • NEW ORLEANS • OKLAHOMA CITY
 PHILADELPHIA • SAN FRANCISCO

CORRPRO COMPANIES, INC.



16
 25

REVIEWED: DWL 3-10-00

No.	DATE	BY	REVISION
1	3-8-00	DCF	CONVERT TO DGN, CHANGE LINE WT, REMOVE PROFILE VIEW, REVISED DECK PLAN TEXT AND LINE STYLES
2	3-9-00	DCF	CORRECTED LOSS OF REFERENCE ARROWS AND ANODE SYMBOLS IN SCHEMATIC DUE TO CONVERSION
3	3-28-00	DCF	RESIZED AND WATCHED TEXT, SCALED UP SCHEMATIC DETAIL

REFERENCE DRAWINGS

BURGESS & NIPLE, LIMITED
 100 WEST ERIE STREET
 PAINESVILLE, OHIO 44077

CATHODIC PROTECTION SYSTEM
 FOR
 BRIDGE NO. LAK-20-1434
 US ROUTE 20 OVER STATE ROUTE 44

DESIGNED BY	JAS
CHECKED BY	JAS
DRAWN BY	LJH
DATE	02-25-00
SCALE	NONE
SHEET	7 OF 12
DWG. NO.	MEDINA-1