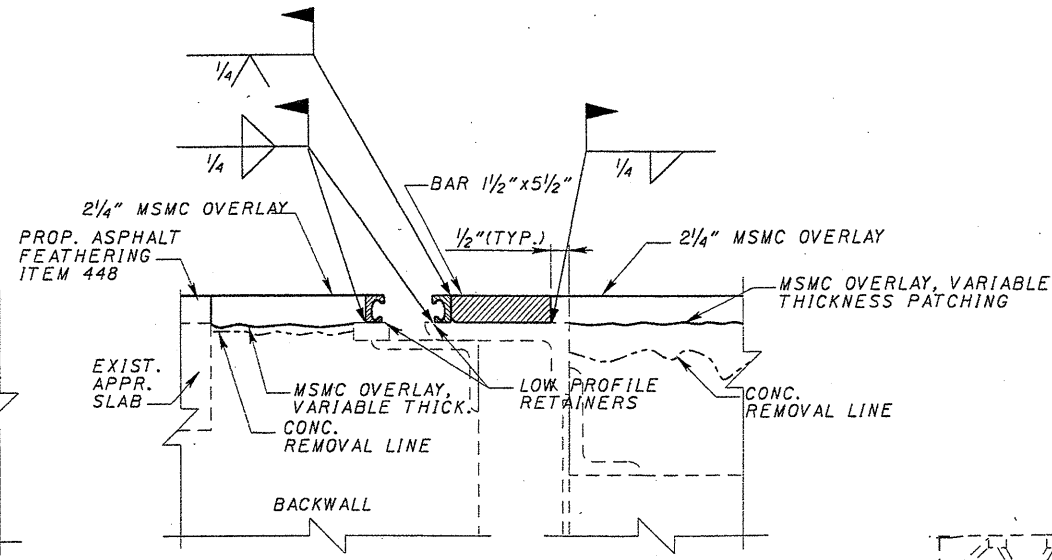
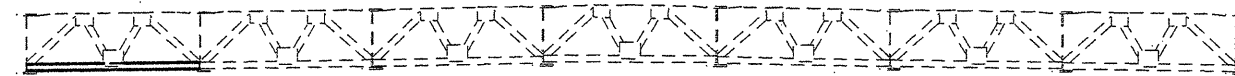


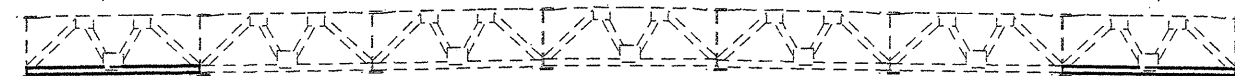
EXISTING EXPANSION JOINT DETAIL



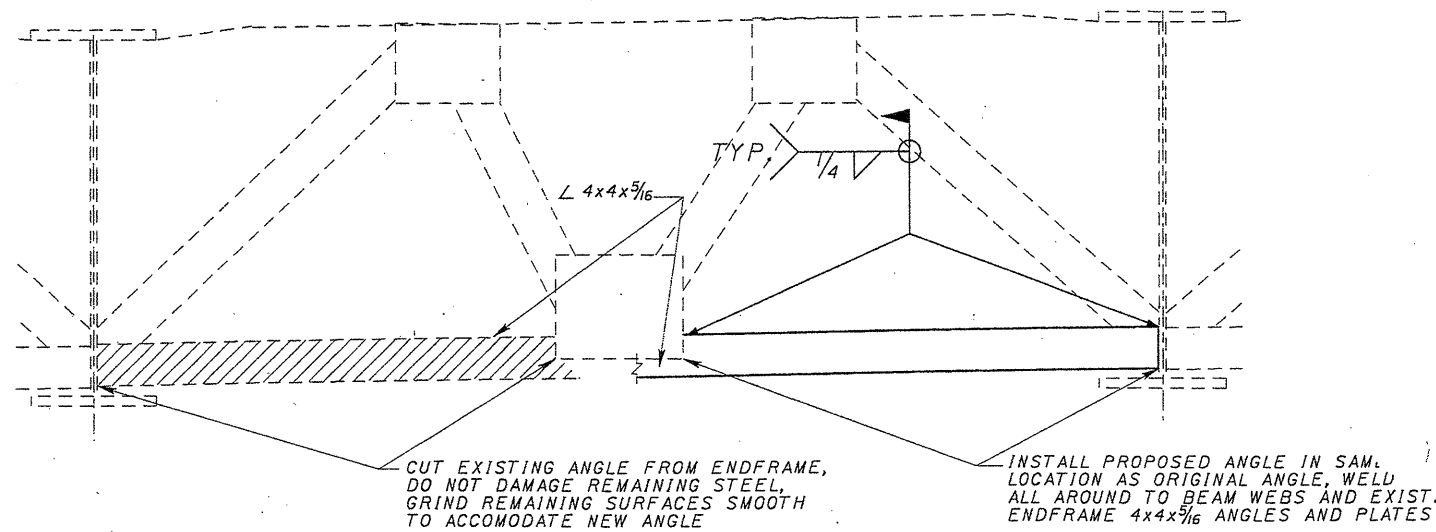
EXPANSION JOINT MODIFICATION DETAIL



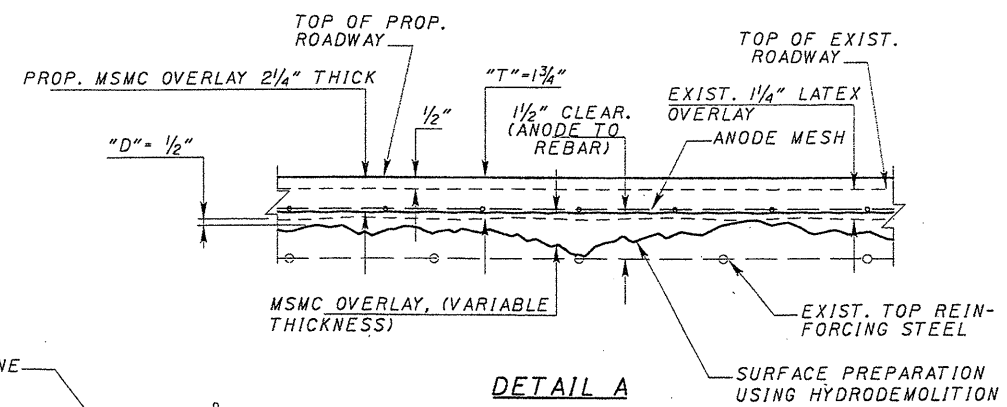
FORWARD ABUTMENT ENDFRAME ANGLE REPLACEMENT  
(LOOKING AHEAD)



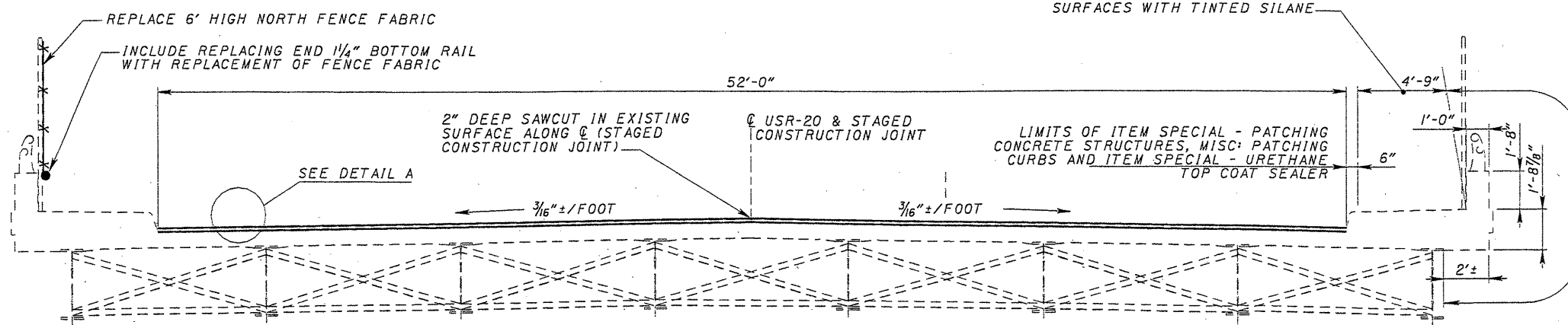
REAR ABUTMENT ENDFRAME ANGLE REPLACEMENT  
(LOOKING BEHIND)



EXISTING ANGLE REMOVAL      PROPOSED ANGLE INSTALLATION  
ENDFRAME ANGLE REPLACEMENT DETAIL



DETAIL A



DECK TYPICAL SECTION

LIMITS OF ITEM SPECIAL - SEALING OF CONCRETE SURFACES WITH TINTED SILANE

LIMITS OF ITEM SPECIAL - PATCHING CONCRETE STRUCTURES, MISC: PATCHING CURBS AND ITEM SPECIAL - URETHANE TOP COAT SEALER

LIMITS OF ITEM SPECIAL - URETHANE TOP COAT SEALER

LEGEND

- APPR. - APPROACH
- CLEAR. - CLEARANCE
- EXIST. - EXISTING
- MSMC - MICROSILICA MODIFIED CONCRETE
- PROP. - PROPOSED
- THICK. - THICKNESS

<b>BURGESS &amp; NIPLÉ</b>	
DATE 3-10-00	STRUCTURE FILE NUMBER 4302133
REVISION DWL	REVISION 4302133
DRAWN DCF	CHECKED MAR
DESIGNED DCF	CHECKED MAR
SUPERSTRUCTURE DETAILS BRIDGE NO. LAK-20-1434 US ROUTE 20 OVER STATE ROUTE 44	
LAK-20-14.34 LAK-44-5.10	
6 / 12	
15 25	