

FED. RD. DIV.	STATE	PROJECT
5	OHIO	T-4030-(13)

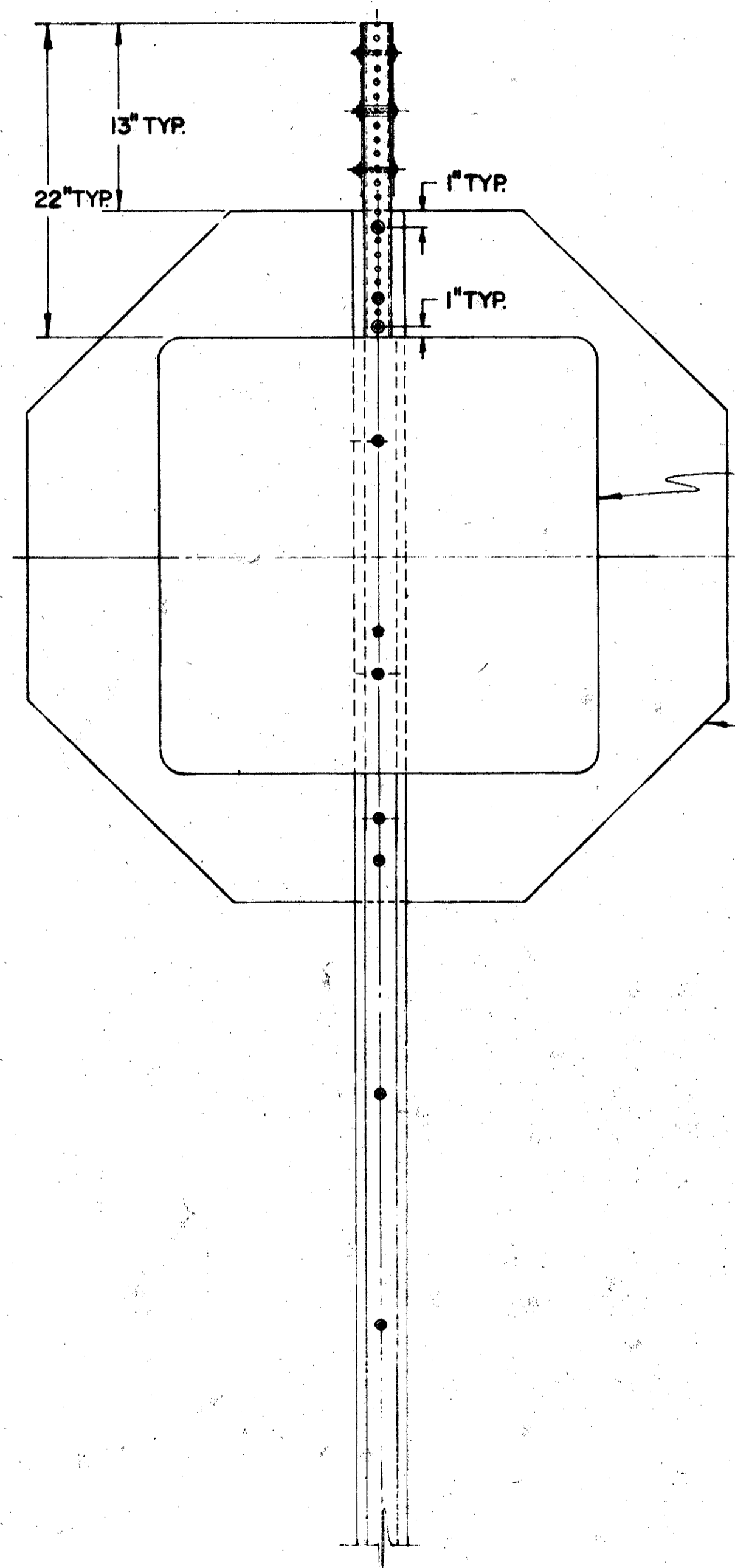
38
38

LAKE COUNTY
LAK.-20-14.30
LAK.-86-0.25
AND WASHINGTON STREET
AND ST. CLAIR STREET

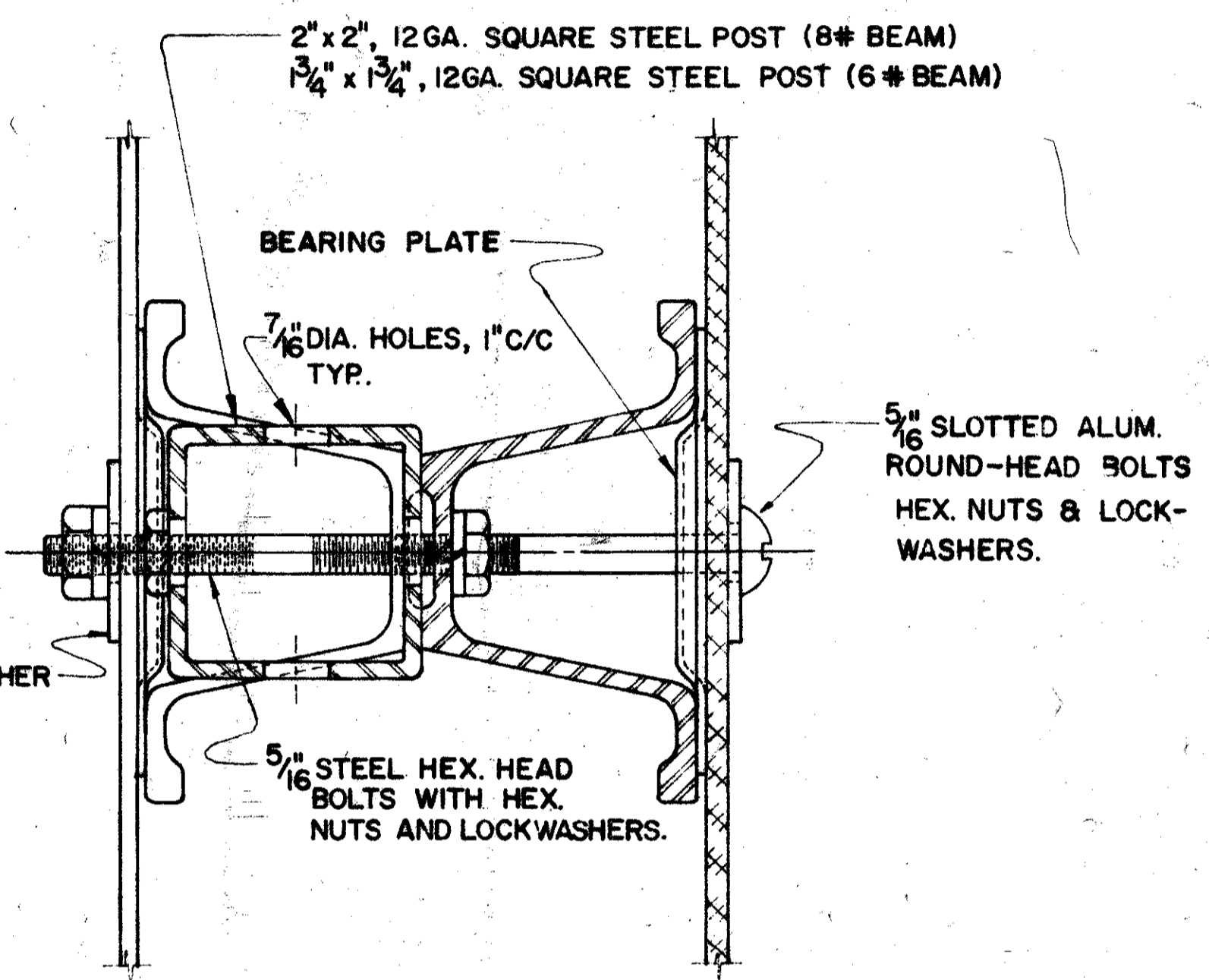
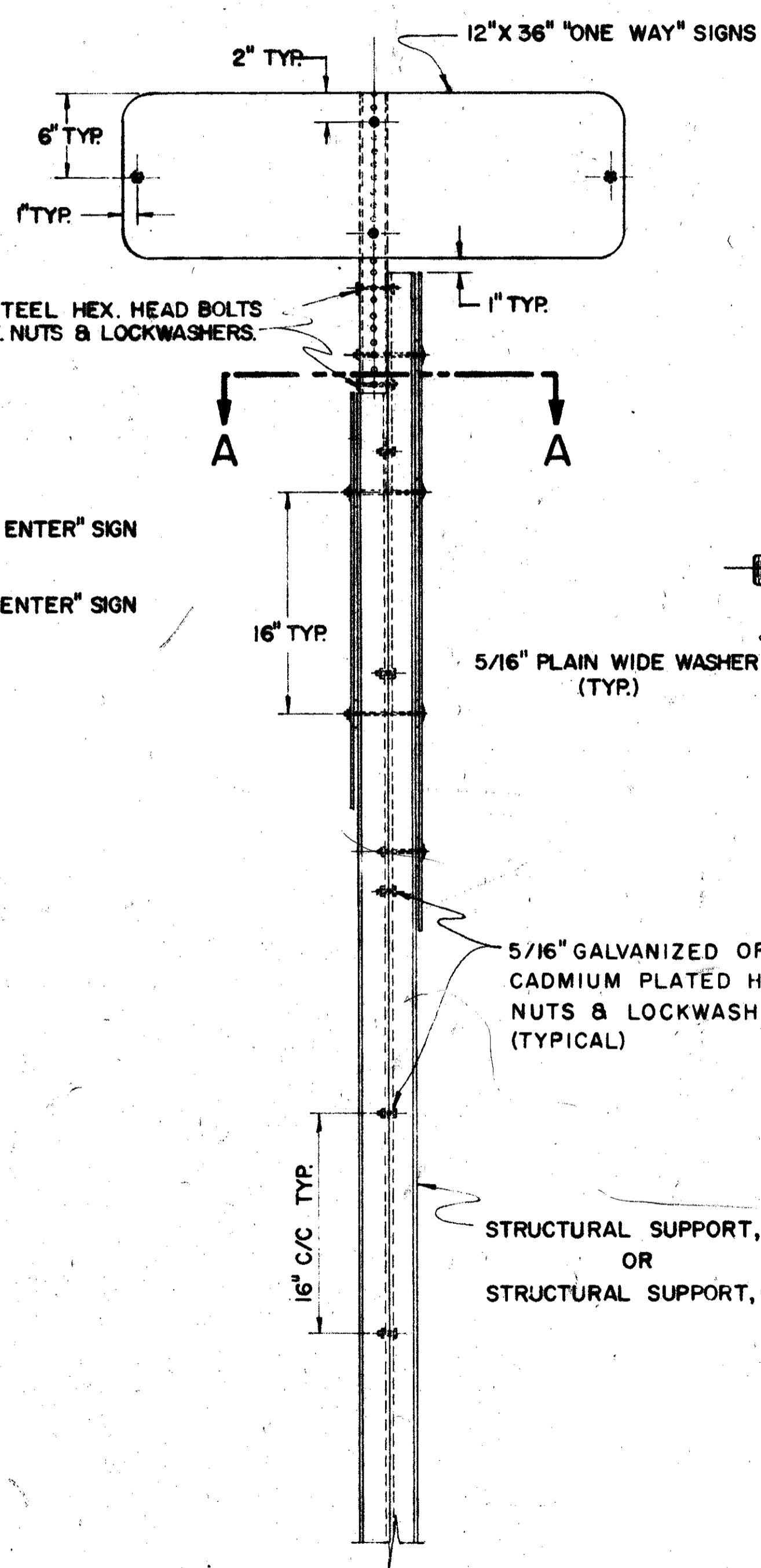
NOTES

MATERIALS
ALL SIGN MATERIALS SHALL BE IN ACCORDANCE WITH SUPPLEMENT SPECIFICATION 815.
ALL STRUCTURAL MATERIALS SHALL BE IN ACCORDANCE WITH SUPPLEMENT SPECIFICATION 816.
FOR SPECIFICATIONS FOR THE 2" & 1 3/4" SQUARE STEEL POST SEE GENERAL NOTES, SHEET NO. 7.

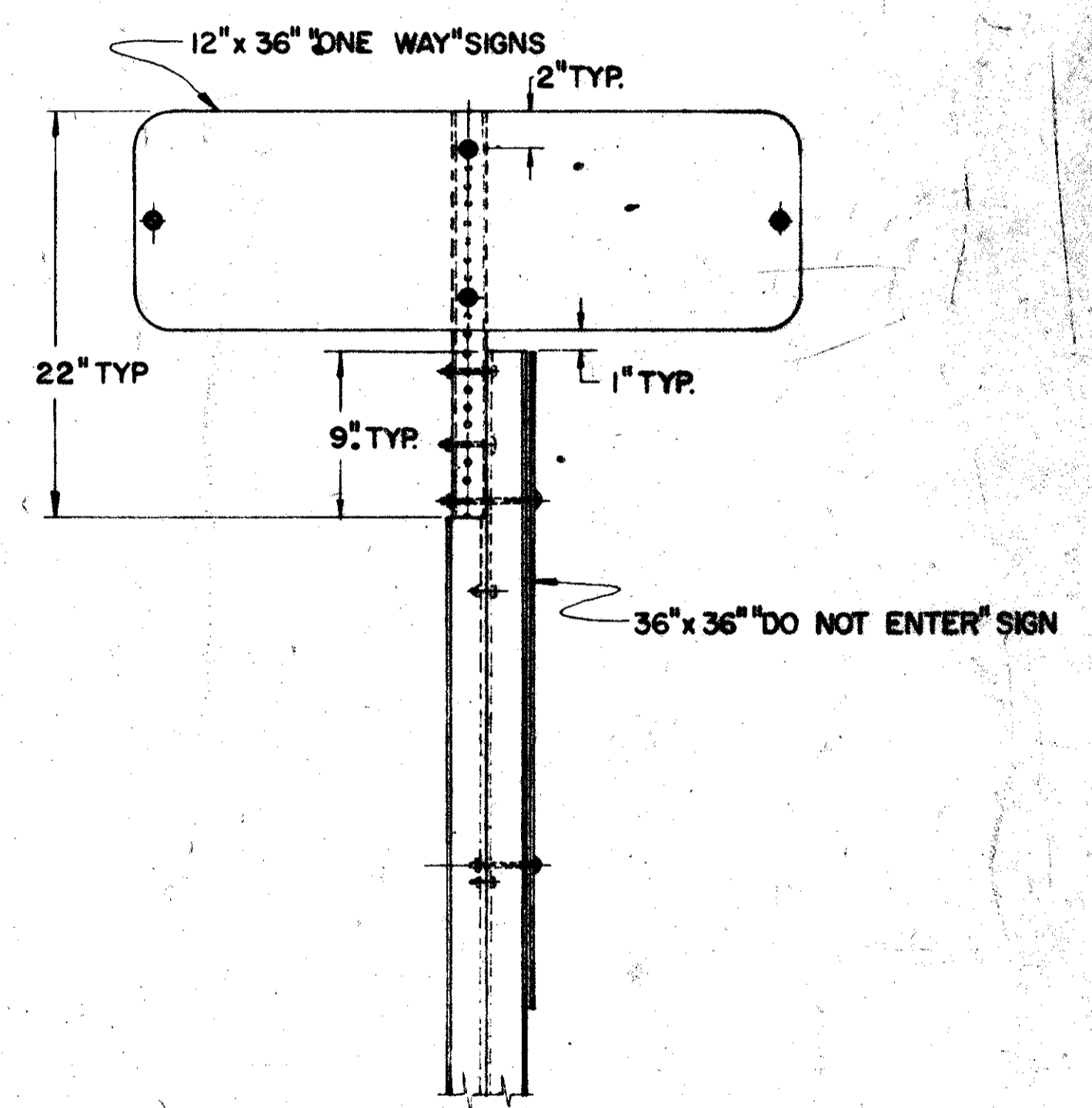
3/8" ID. ALUM. OR FIBER SPACER
(A)= 2" LG., (B)= 1 3/4" LG.
5/16" SLOTTED ALUM. TRUSS HEAD BOLTS, HEX. NUTS & LOCKWASHERS.



**"ONE WAY", "STOP", "DO NOT ENTER",
SIGN INSTALLATION.**



SECTION A-A



**"ONE WAY", "DO NOT ENTER"
SIGN INSTALLATION**

BUREAU OF TRAFFIC OHIO DEPARTMENT OF HIGHWAYS		
SPECIAL "ONE WAY" SIGN SUPPORT DETAILS	SOW	DATE 2-7-66 4-18-67
		APPROVED _____ ENGINEER OF TRAFFIC