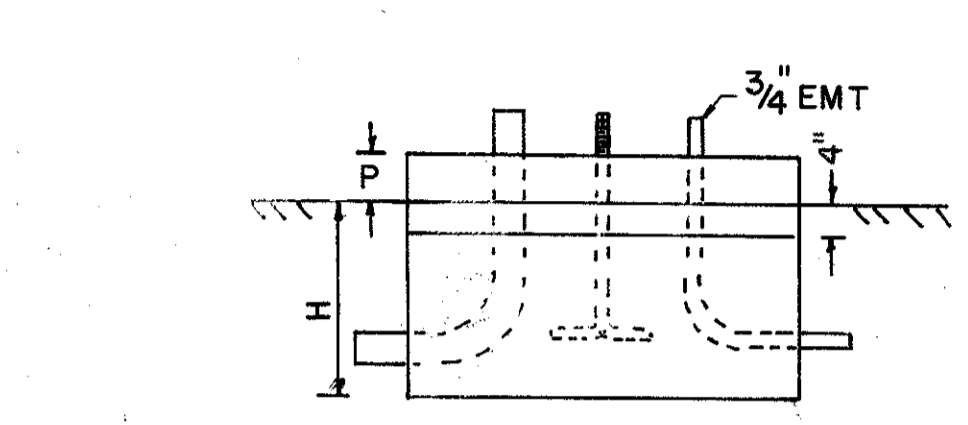
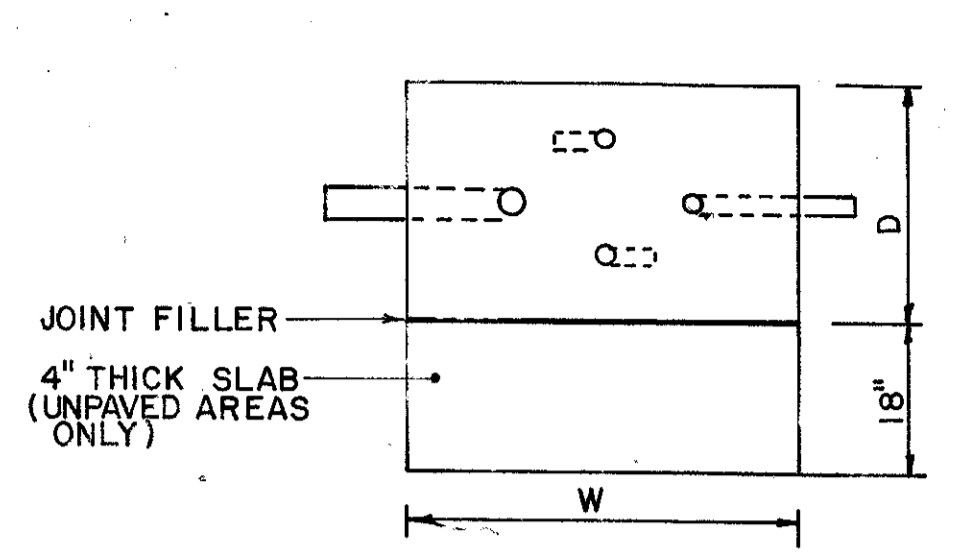
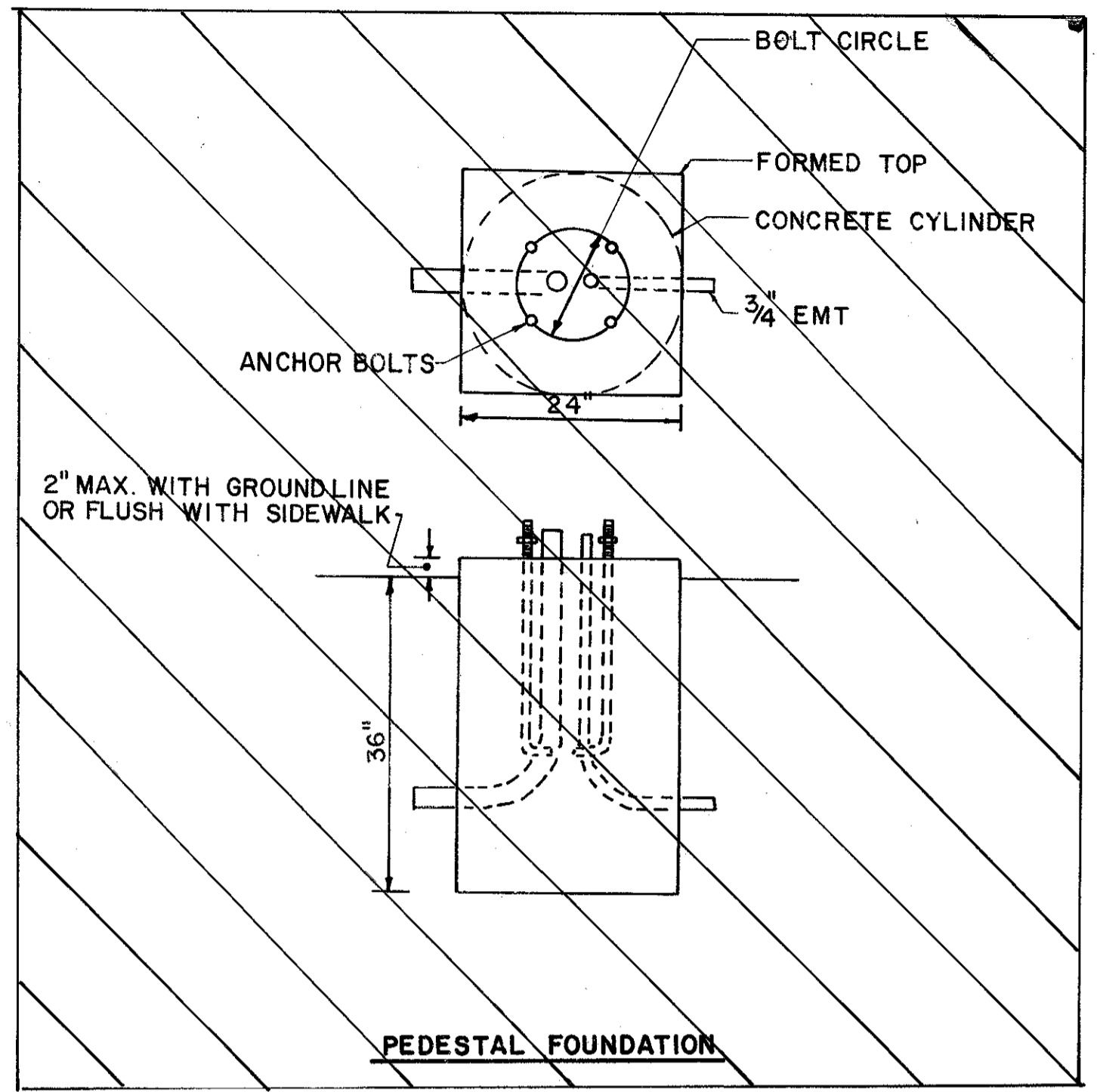


LAKE COUNTY
LAK. -20-14.30
LAK. -86-0.25
AND WASHINGTON STREET
AND ST. CLAIR STREET

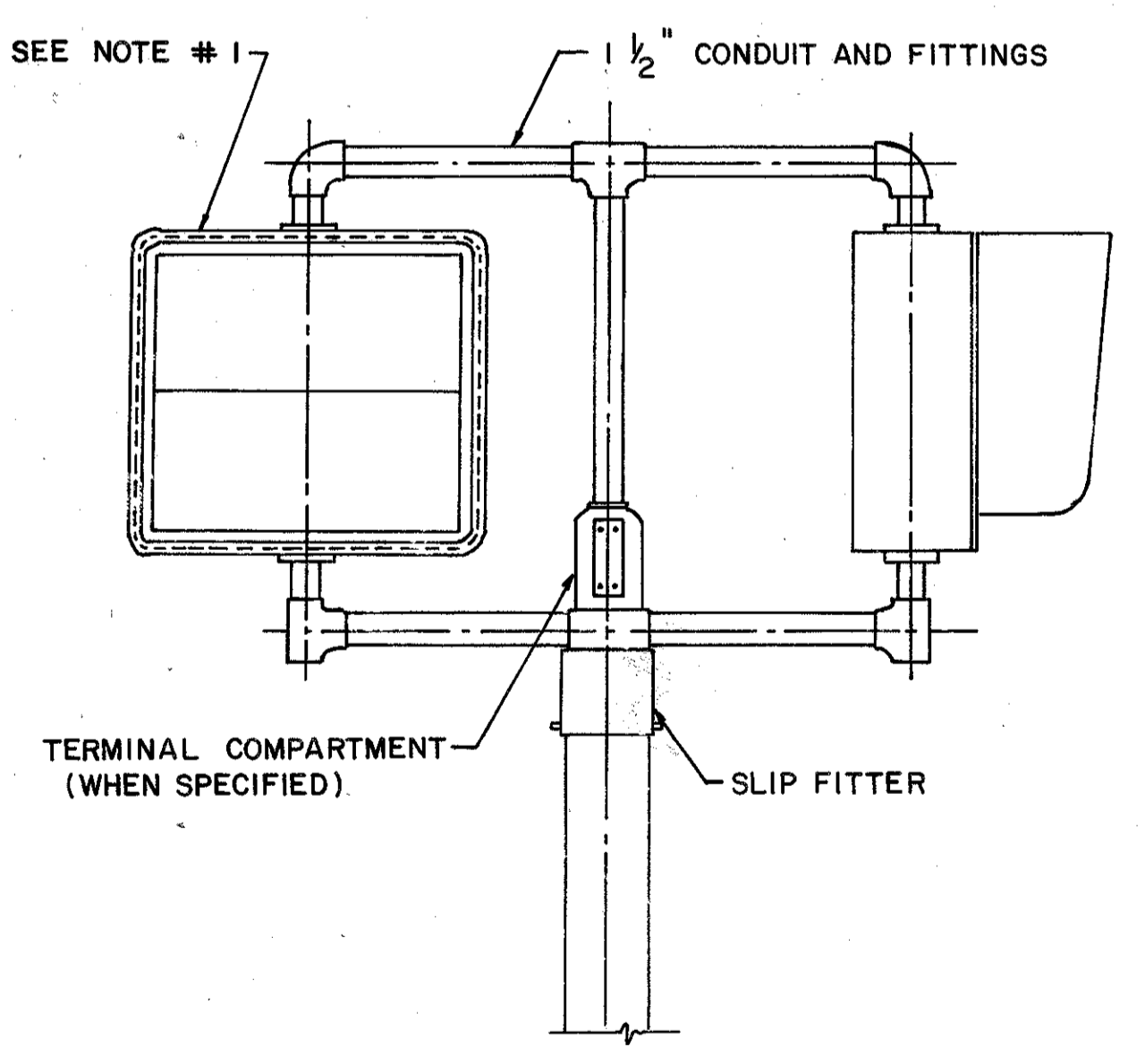


TYPE	W	D	H	P
1	40"	24"	30"	12"
2	50"	30"	24"	6"

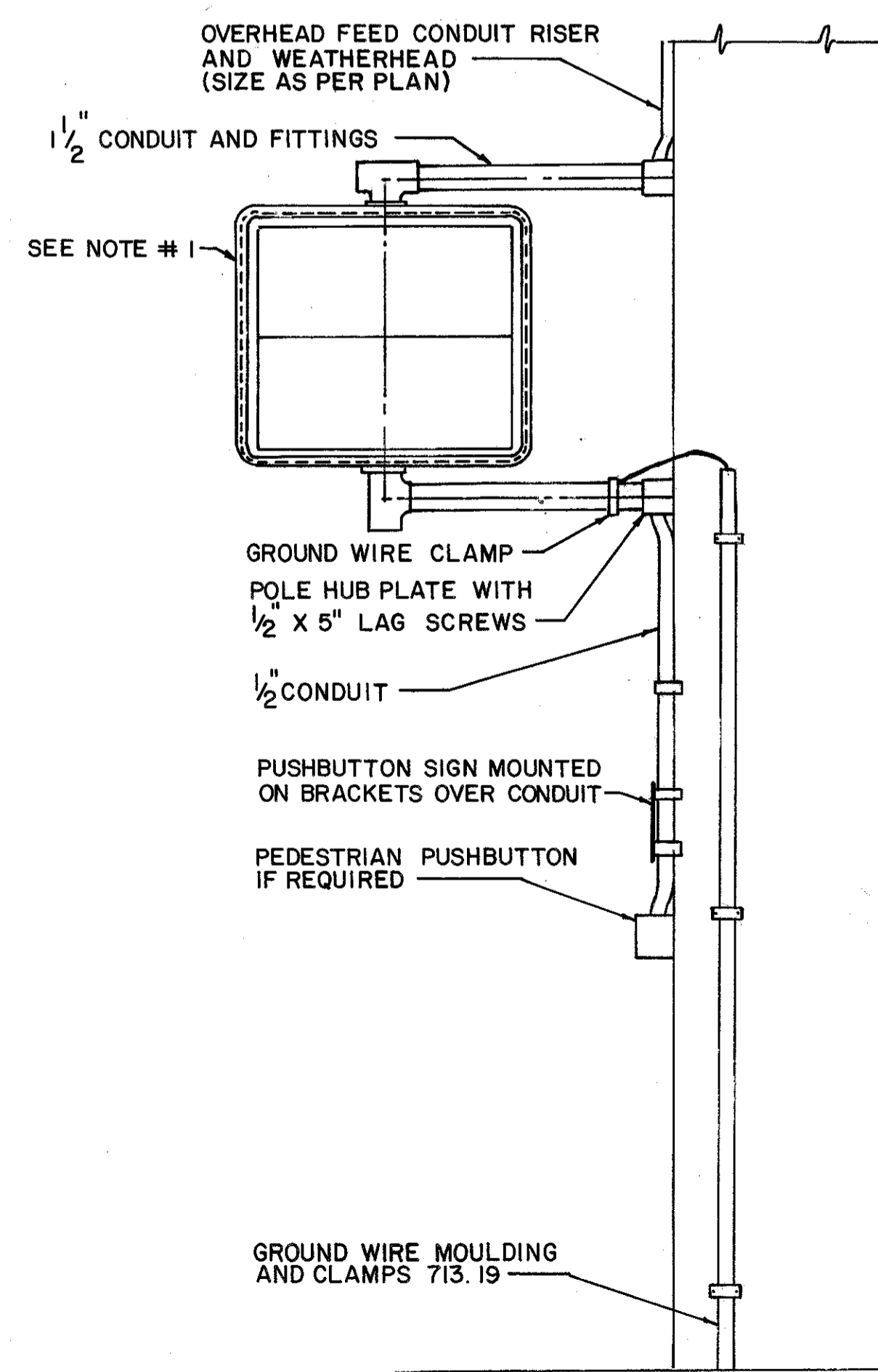
GROUND MOUNTED CONTROLLER FOUNDATION



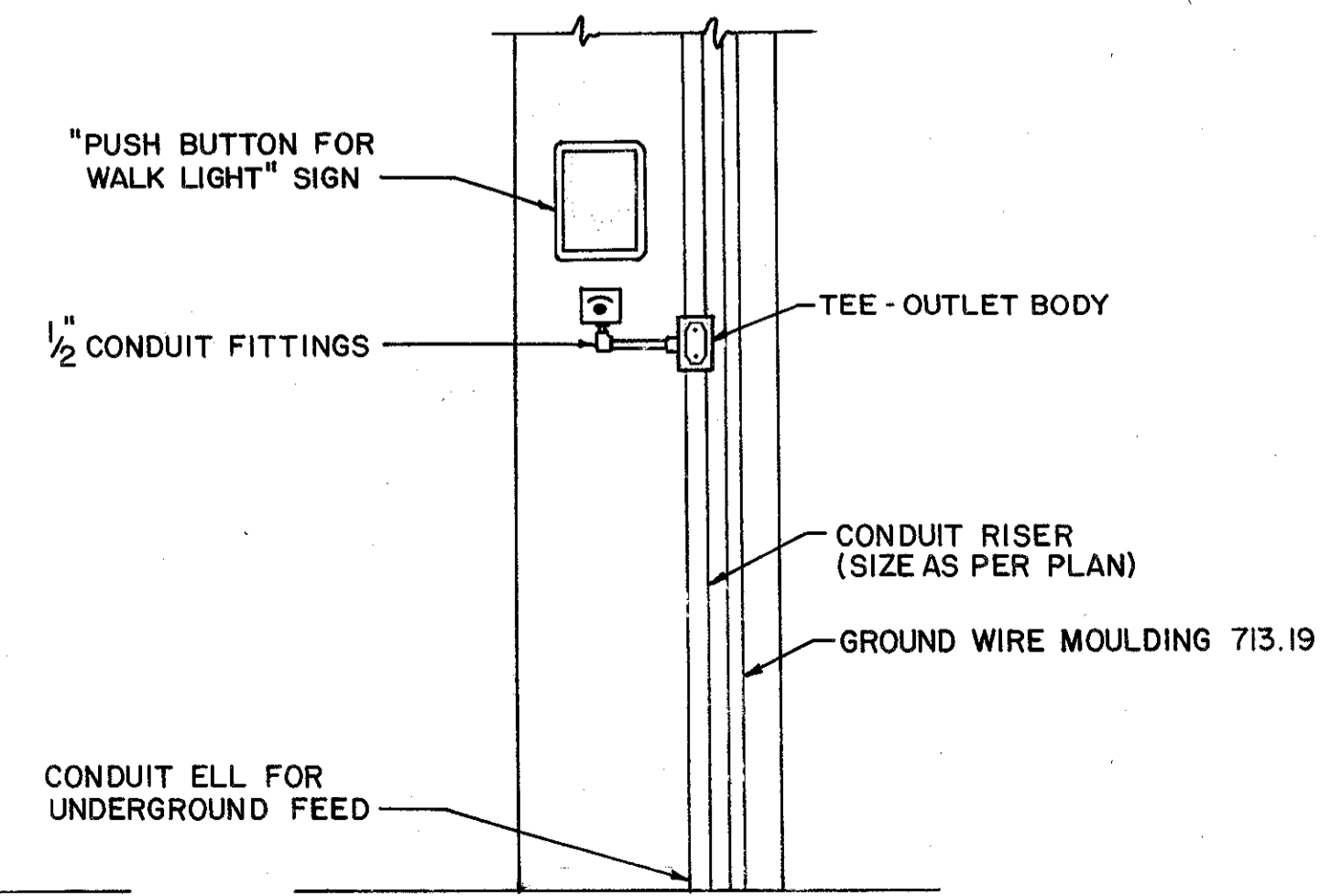
PEDESTAL FOUNDATION



PEDESTAL MOUNTED SIGNAL HEAD

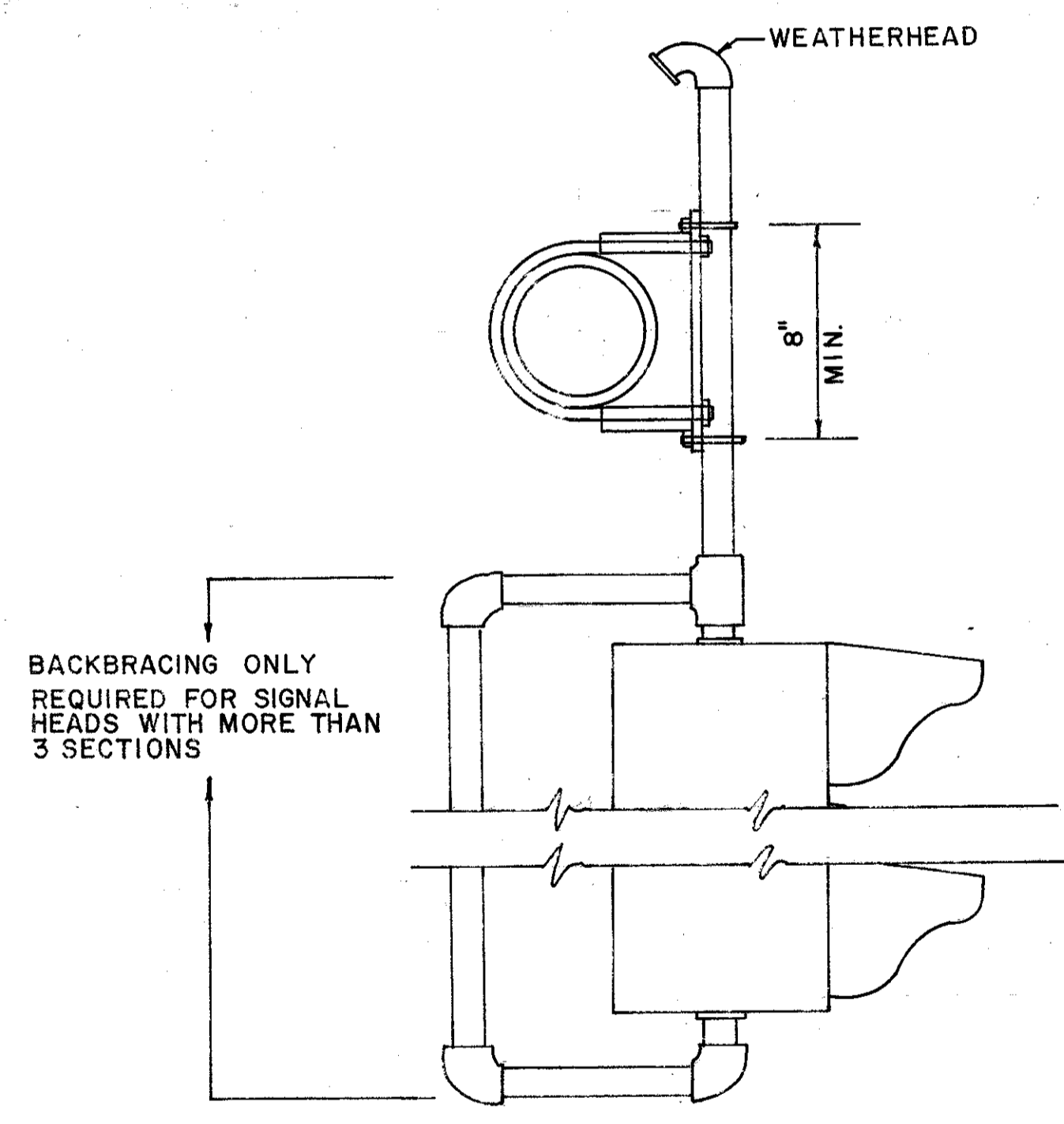
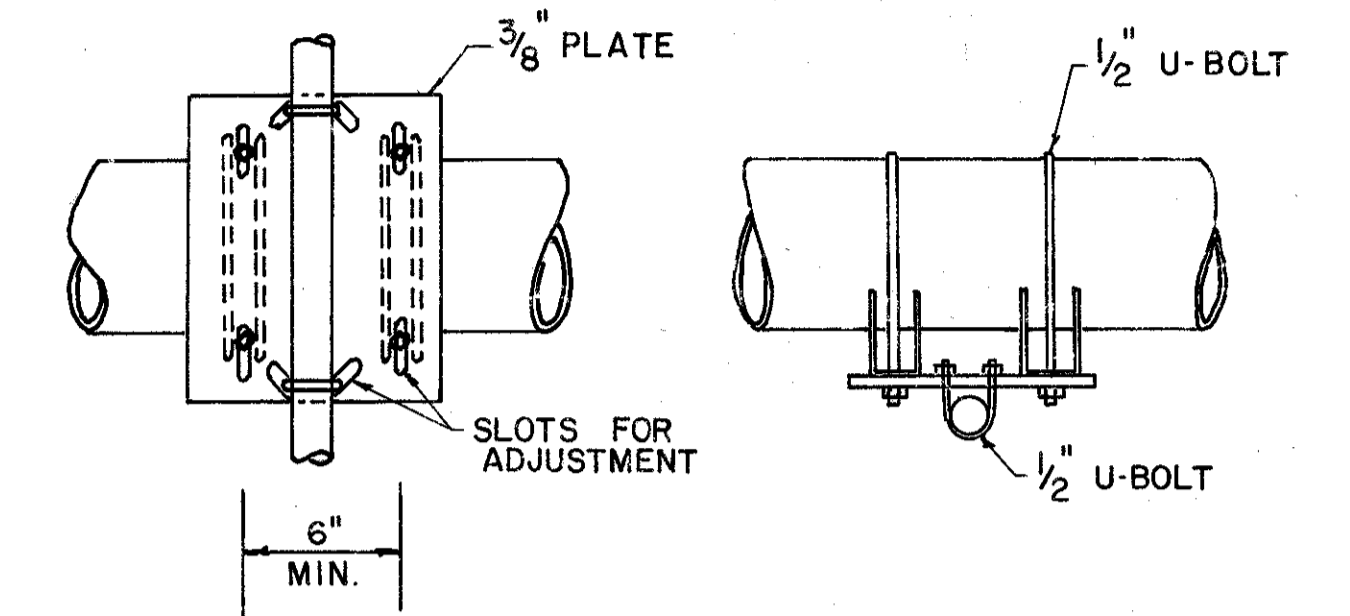
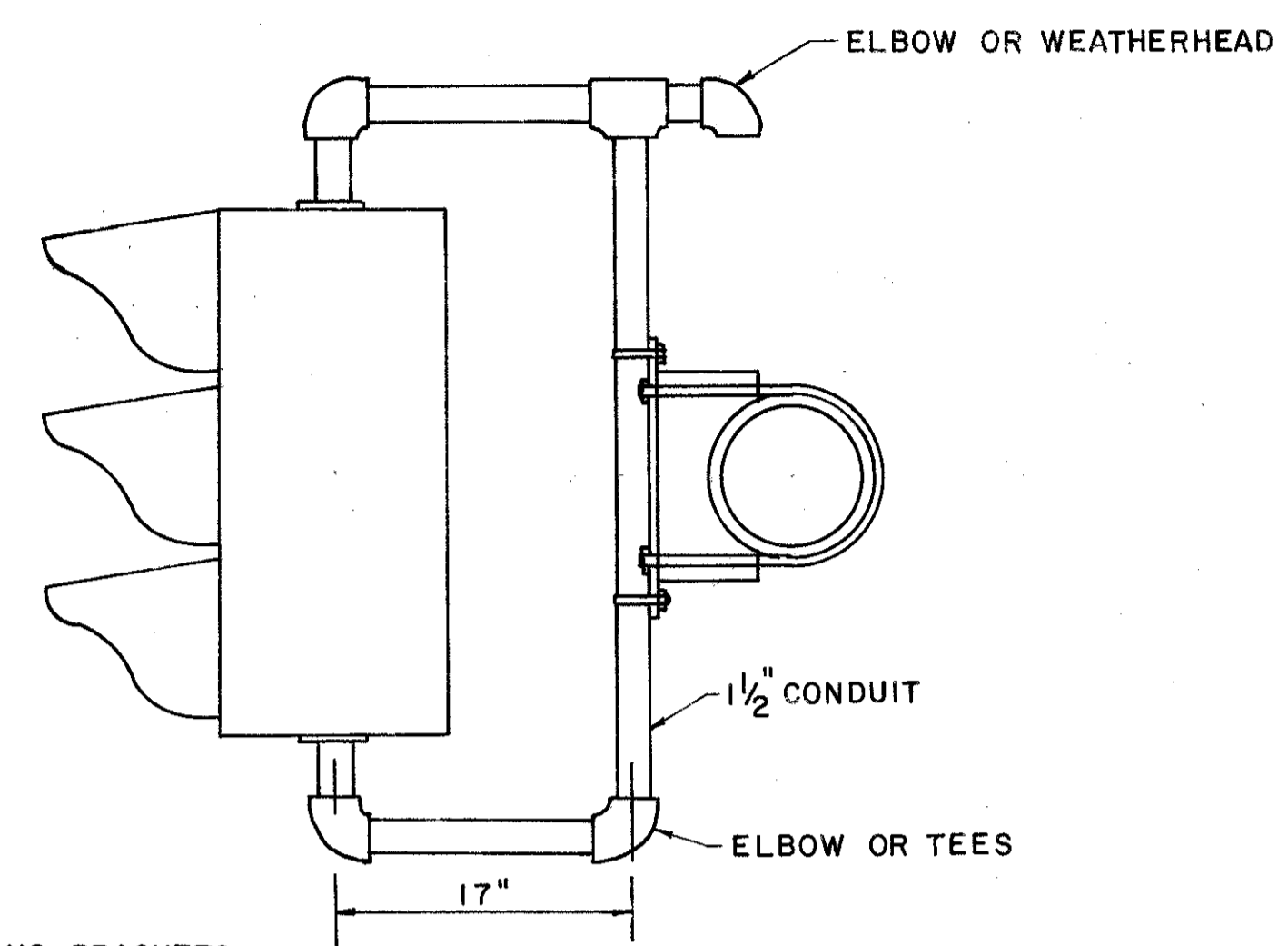


WOOD POLE DETAIL



- NOTES:
- VEHICULAR SIGNAL HEADS WILL UTILIZE MOUNTING BRACKETS SIMILAR TO THOSE SHOWN FOR PEDESTRIAN SIGNAL HEADS.
 - EMBEDDED STEEL POLES SHALL UTILIZE A POLE HUB PLATE ATTACHED BY 3/4" X 02" STAINLESS STEEL BANDS. EXTERNAL CONDUIT WILL BE SIMILAR TO THAT SHOWN IN "WOOD POLE DETAIL" EXCEPT THAT EXTERNAL GROUNDING WILL NOT BE REQUIRED IF THE POLE IS ADEQUATELY GROUNDED.
 - VERTICAL SPACING BETWEEN BRACKET FITTINGS SHALL BE DETERMINED BY THE CONTRACTOR AND SHALL BE SPACED FROM CENTERLINE TO CENTERLINE OF BRACKET ARMS TO ACCOMMODATE THE VERTICAL HEIGHT OF THE SIGNAL PLUS NOT MORE THAN 10".
 - HARDWARE FOR ATTACHMENT TO WOOD POLES SHALL BE GALVANIZED, HEAVY CADMIUM PLATED OR STAINLESS STEEL OF THE FOLLOWING MINIMUM SIZES:
 - SIGNAL BRACKET ARM HUB PLATES - 1/2" DIA. X 5" LONG LAG SCREWS, TWO SCREWS PER HUB PLATE.
 - CONDUIT CLAMPS - #14 X 3" LONG ROUND HEAD WOOD SCREWS, OR 20D. SPIKES.
 - SIGN ATTACHMENT - WITH BRACKETS, 3/8" X 3" LAG SCREW, 2 PER BRACKET. WITHOUT BRACKETS, 3/8" X 3" LAG SCREWS, 7/16" I.D. X 1" O.D. FLAT WASHER BETWEEN SIGN AND POLE, 2 PER SIGN.
 - PUSHBUTTONS - #14 X 3-1/2" LONG ROUNDHEAD WOOD SCREWS, 2 PER PUSHBUTTON.

SEE NOTE #4 FOR WOOD POLE ATTACHMENTS



SIGNAL HEAD RIGID MOUNTING ON MAST ARM

BACKBRACING ONLY REQUIRED FOR SIGNAL HEADS WITH MORE THAN 3 SECTIONS