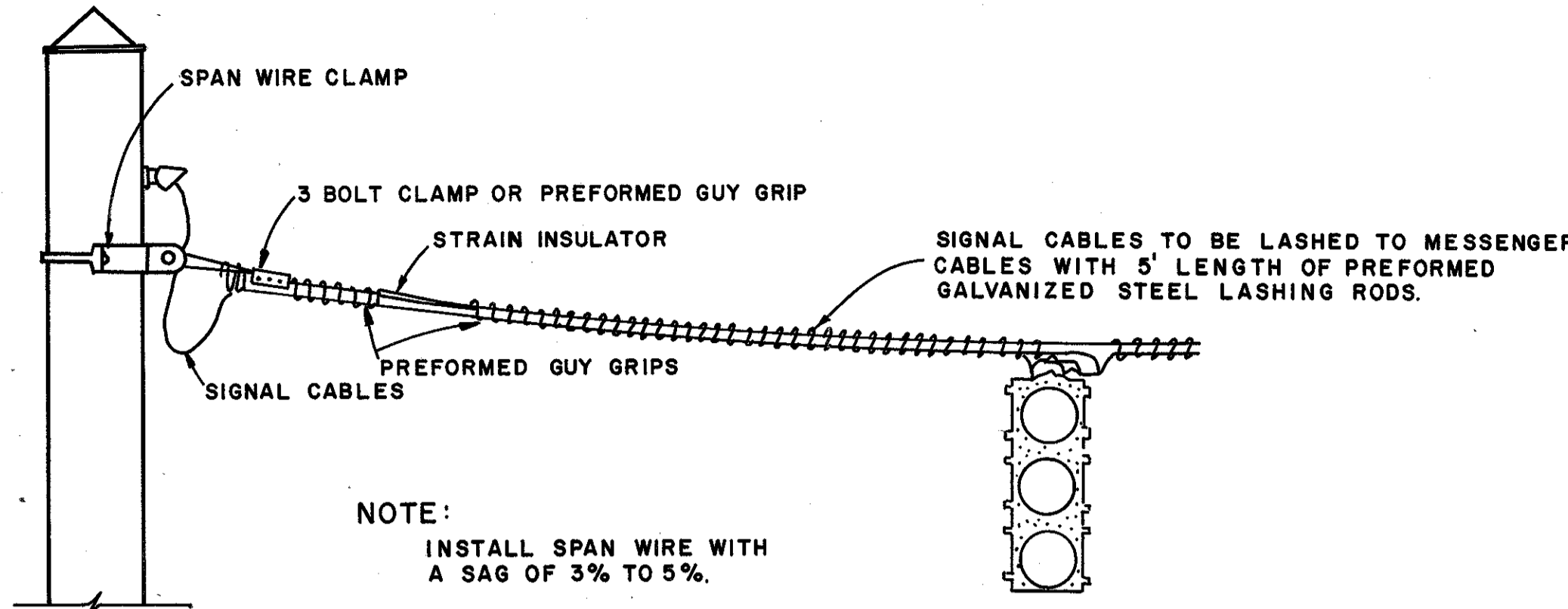
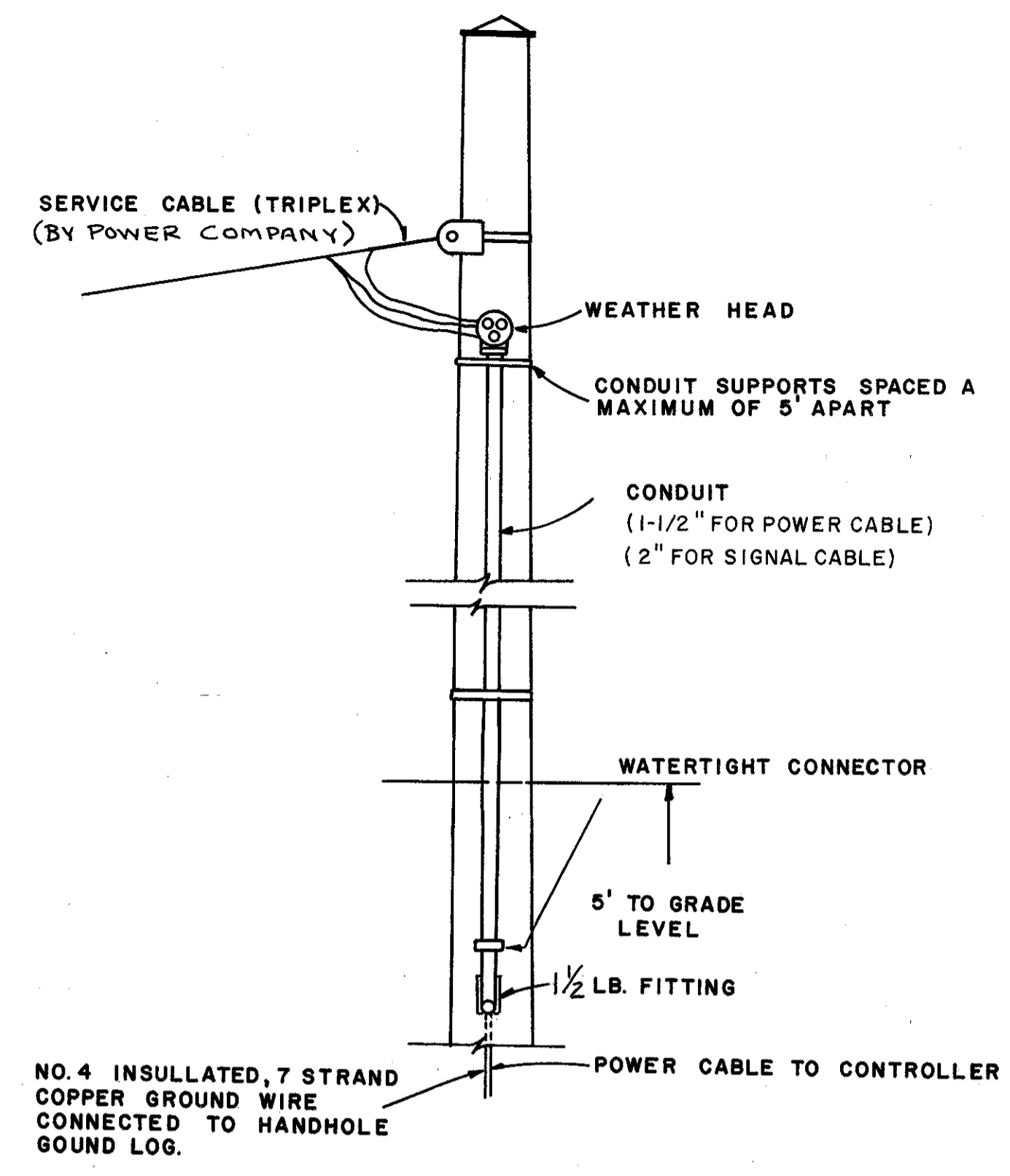


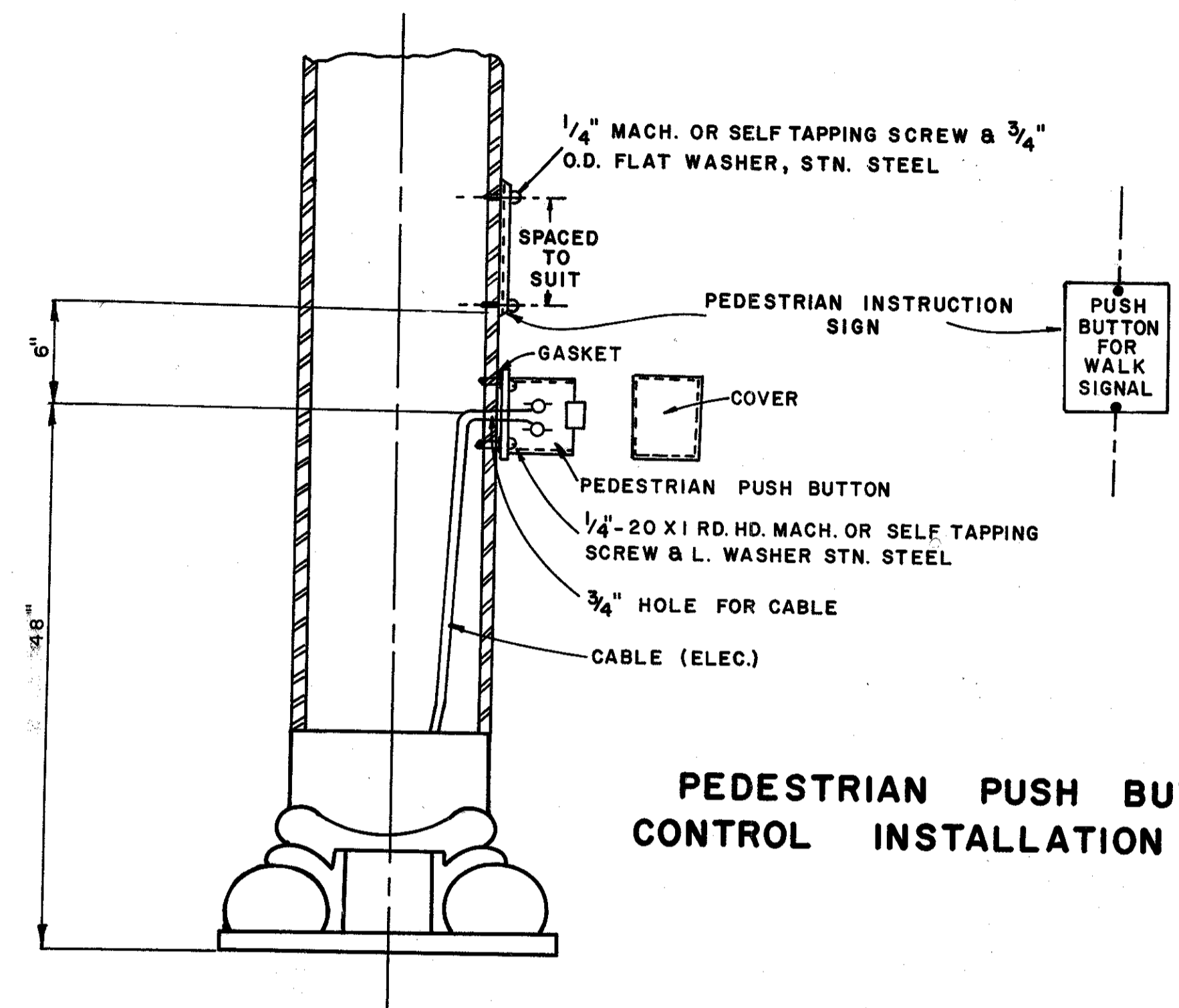
LAKE COUNTY
LAK.- 20-14.30
LAK.- 86-0.25
AND WASHINGTON STREET
AND ST. CLAIR STREET



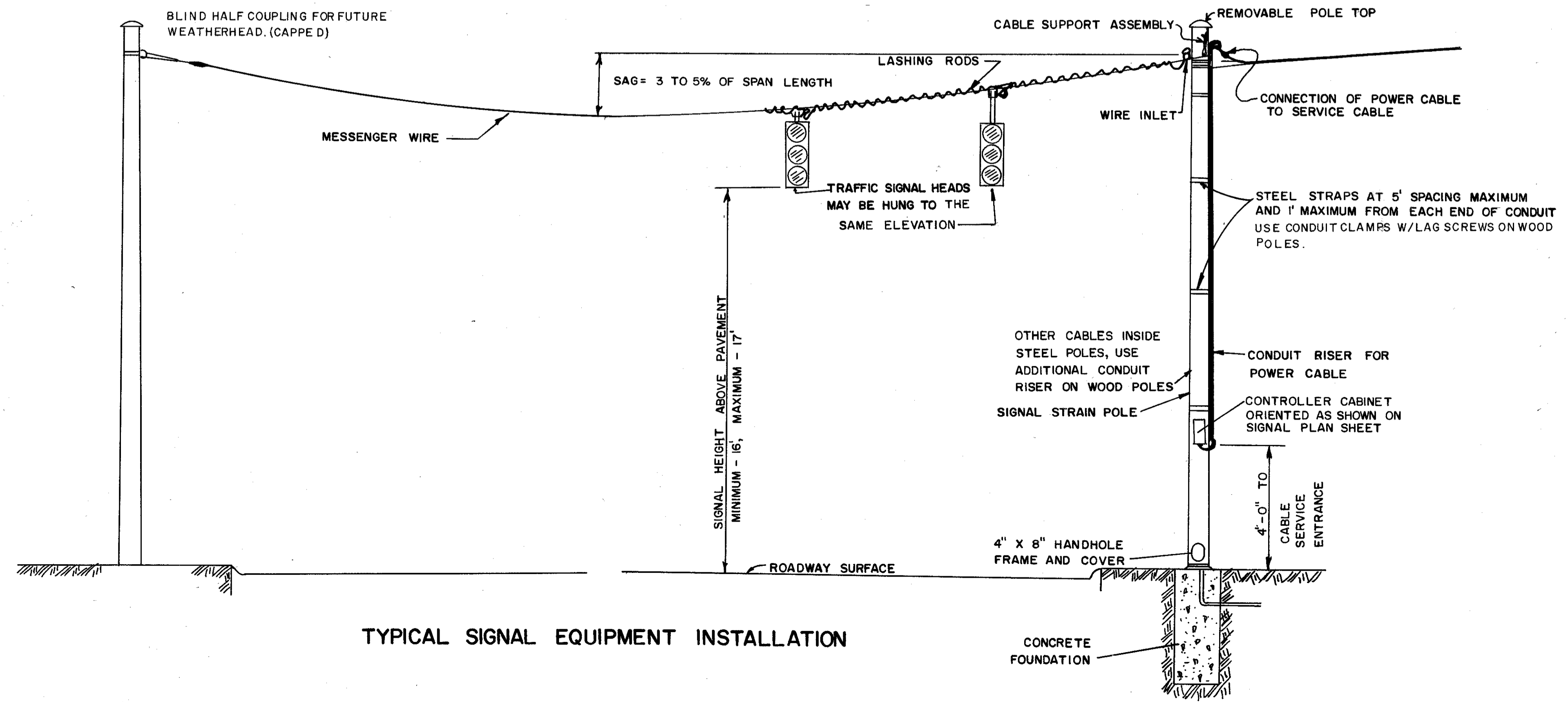
MESSENGER WIRE INSTALLATION DETAILS



WEATHERHEAD & CONDUIT RISER



PEDESTRIAN PUSH BUTTON CONTROL INSTALLATION DETAILS



TYPICAL SIGNAL EQUIPMENT INSTALLATION

MESSENGER WIRE INSTALLATION
WEATHERHEAD & CONDUIT RISER
PEDESTRIAN PUSH BUTTON CONTROL
INSTALLATION DETAIL

SCALE: NONE