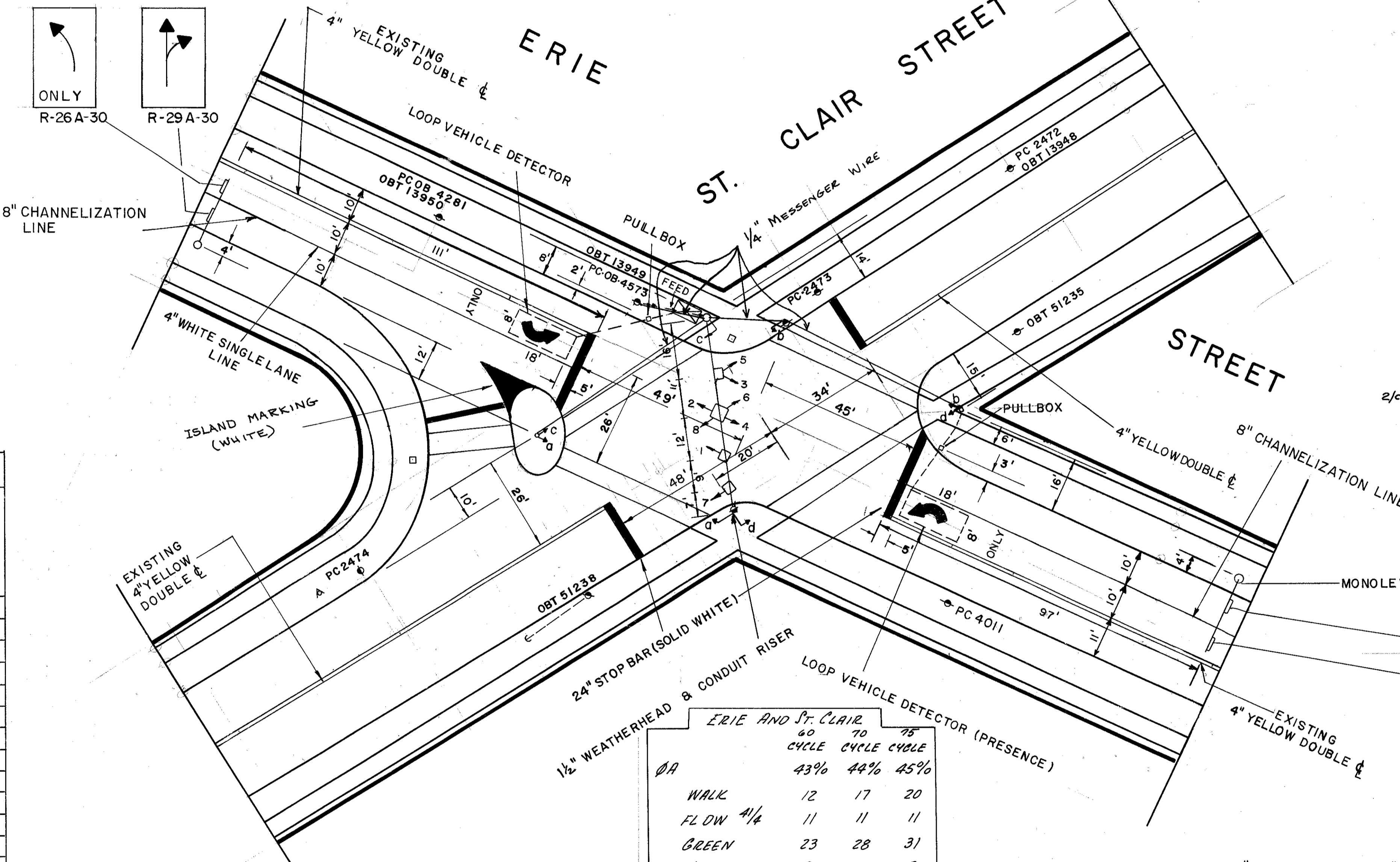


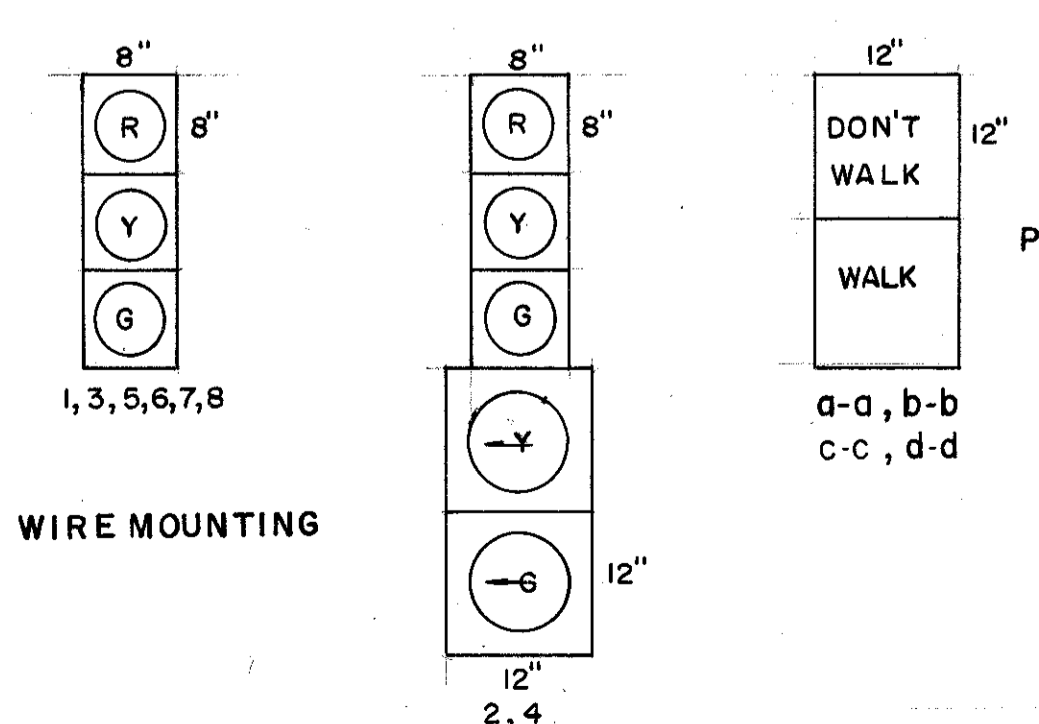
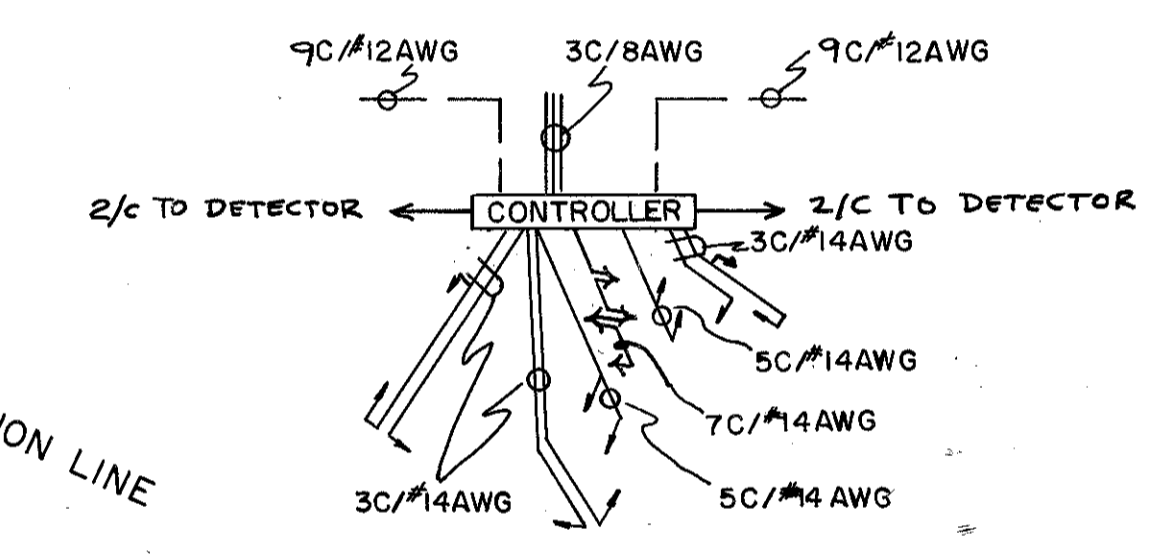
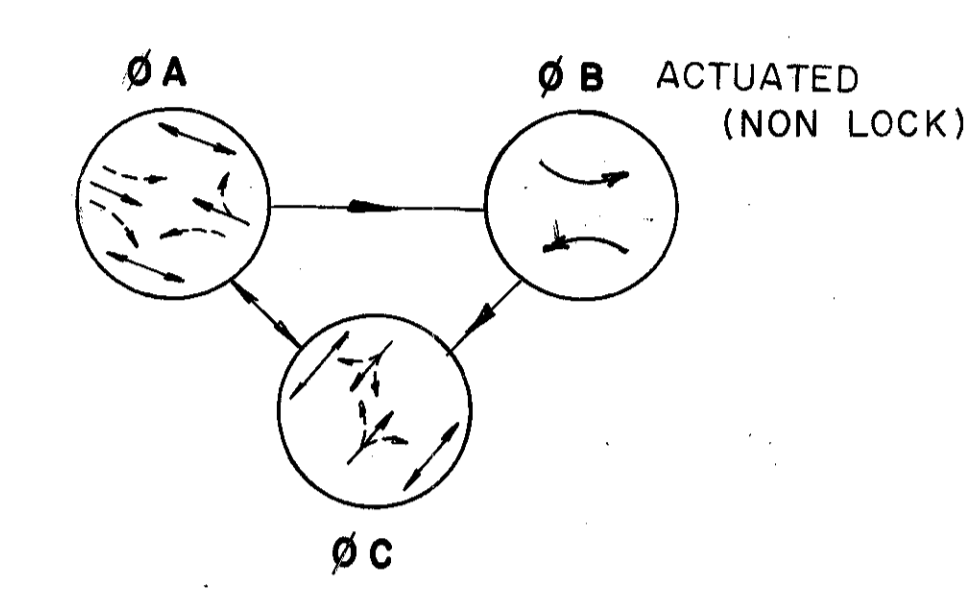
DATE		APPLIES ON CAM CHART		COLOR SEQUENCE CHARTS													
DRAWN				ERIE ST. & ST. CLAIR ST.													
CHECKED				PAINESVILLE, OHIO													
APPROVED																	
DIAL SETTING (SECONDS OR PERCENT)																	
STREETS	NUMBER OF SIGNALS	LENS	ØA	ØB	ØC												
			1	2	3	4	5	6	7	8	9	10	11	12	13	14	FLASH
X	X	C-C	DW	X	X	X	X	X	X	X	X	X	X	X	X	X	
X	X	d-d	FDW														DA RK
X	X	q-q	DW		X	X	X	X									DA RK
X	X	b-b	FDW						X								
X	X	w	W	X	X	X	X	X									X
X	X	r	R	X	X	X	X	X									X
X	X	y	Y						X								X
X	X	g	G	X	X	X	X	X									X
X	X	r	R						X	X	X	X	X	X	X		X
X	X	y	Y						X	X	X	X	X	X	X		X
X	X	g	G	X	X	X	X	X									X
X	X	r	R						X	X	X	X	X	X	X		X
X	X	y	Y						X	X	X	X	X	X	X		X
X	X	g	G	X	X	X	X	X									X

FDW - FLASHING DONT WALK

ITEM	DESCRIPTION	UNIT	TRAFFIC - SIGNAL QUANTITIES SUB SUMMARY	
			UNIT	QUANTITY
816	SIGNAL STRAIN V, 3 GA., 10" X 6.36" X 26'0"	EA.	1	
816	OVERHEAD SIGN SUPPORT, 16.10 DESIGN 2 MODIFIED, 20' ARM	EA.	2	
816	CONCRETE FOR SIGNAL SUPPORTS	CY.	3	
625	TRAFFIC SIGNALS - SPAN WIRE - 8" G, 8" Y, 8" R, 3 SECTIONS, 1-WAY	EA.	2	
625	TRAFFIC SIGNALS - SPAN WIRE, 3 SECT. - 8" R, Y & 8" R, Y, G, 12" YA, 12" GA, 5 SECTIONS, 4-W	EA.	1	
625	PEDESTRIAN SIGNAL, INCANDESCENT, VERT. MTD. ONE WAY	EA.	2	
625	PEDESTRIAN SIGNAL, INCANDESCENT VERT. MTD. TWO WAY	EA.	3	
625	SIGNAL CONTRLR, POLE MTD., TYPE II	EA.	1	
625	OVERHEAD SIGN SUPPORT, 16.10 DESIGN 2 MODIFIED, 24' ARM	EA.	1	
625	TRENCH	LF.	30	
625	PULL BOX 713.09	EA.	2	
625	LOOP DETECTOR PAVEMENT CUTTING	LF.	139	
625	1 1/2" CONDUIT RISER W/ WEATHERHEAD	EA.	1	
816	SIGNAL STRAIN POLE 3 GA. 7" X 4.20" X 20'	EA.	2	
625	TRAFFIC SIGNAL - SPAN WIRE - 8" R, Y & 8" R, Y, G 3 SECTION - 2 WAY	EA.	1	
625	2" CONDUIT 713.04	LF.	30	
625	CABLE SUPPORT ASSEMBLY	EA.	4	
625	POWER CABLE 3C/# 8AWG	LF.	30	
625	SIGNAL CABLE 3C/# 14AWG	LF.	834	
625	SIGNAL CABLE 5C/# 14AWG	LF.	165	
625	SIGNAL CABLE 7C/# 14AWG	LF.	105	
625	LOOP DETECTOR WIRE	LF.	312	
625	LOOP DETECTOR LEAD IN CABLE	LF.	155	
625	1/4"-3 STRAND SPAN WIRE	LF.	155	
625	3/8"-7 STRAND SPAN WIRE	LF.	55	
202	REMOVAL OF EXISTING SIGNAL INSTALL.	EA.	1	
625	INTERCONNECT CABLE 9/C # 12AWG	LF	55	
815	SIGNS, FLAT SHEET TYPE	SF.	30	
621	LANE ARROWS	EA.	2	
621	WORD ON PVMT AS PER PLAN	EA.	2	
621	8" WHITE CHANNELIZATION LINE	LF.	150	
621	4" YELLOW DOUBLE	MILES	0.03	
621	6" WHITE CROSS WALK	LF.	400	
621	24" WHITE STOP BAR	LF.	105	
625	LOOP DETECTOR AMPLIFIER	EA.	1	
625	COVERING OF TRAFFIC SIGNAL HEAD	EA.	4	
621	ISLAND MARKING	SF.	70	
625	GROUND RODS	EA	5	
816	CONCRETE FOR SIGN SUPPORT FDN	CY	2	



ERIE AND ST. CLAIR				
	60 CYCLE	70 CYCLE	75 CYCLE	
ØA	43%	44%	45%	
WALK	12	17	20	
FLDW 1/4	11	11	11	
GREEN	23	28	31	
YELLOW	3	3	3	
RED	34	39	41	
ØB	ACTUATED			
INITIAL	2	2	2	
VEHICLE EXT. MAX.	2	2	2	
GREEN	18	23	25	
YELLOW	3	3	3	
RED	0	0	0	
ØC	WALK	7	7	7
	FLDW 1/4	11	11	11
	GREEN	18	23	25
	YELLOW	3	3	3
	RED	39	44	47



ERIE STREET AND ST. CLAIR STREET SIGNAL PLAN SCALE: 1" = 20'

CALC. BY E.G. DATE 11-11-74
 CKD. BY D.D. DATE 1-31-75

FED. RD. DIV. 5 STATE OHIO PROJECT T-4030-(13)

LAKE COUNTY
 LAK. - 20-14.30
 LAK. - 86-0.25
 AND WASHINGTON STREET
 AND ST. CLAIR STREET