

DATE	APPLIES ON CAM CHART	COLOR SEQUENCE CHARTS													
		MENTOR, WOOD, WATSON & ERIE PAINESVILLE, OHIO													
CHECKED															
APPROVED															
DIAL SETTINGS (SECONDS OR PERCENT)															
STREETS	NUMBER OF SIGNALS	DIAL SETTINGS (SECONDS OR PERCENT)													
		1	2	3	4	5	6	7	8	9	10	11	12	13	14
WOOD	WATSON	DIAL SETTINGS (SECONDS OR PERCENT)													
		1	2	3	4	5	6	7	8	9	10	11	12	13	14

MENTOR-ERIE-WOOD-WATSON  
-SEMI ACT. 60 70 75  
CYCLE CYCLE CYCLE  
47% 47% 51%

ØA - MENTOR - ERIE

WALK	7	7	7
FL DW 3/4	8	8	8
MIN. GREEN	25	30	35
YELLOW	3	3	3
ALL RED	0	0	0

ØB MENTOR - WATSON ACT.

WALK	7	7	7
FL DW 3/4	8	8	8
INITIAL	5	5	5
VEHICLE EXT.	3	3	3
MAX.	15	15	15
YELLOW	3	3	3
ALL RED	0	0	0

ØC WATSON ACTUATED

WALK	7	7	7
FL DW 3/4-2	8	8	8
INITIAL	4	4	4
VEHICLE EXT.	3	3	3
MAX.	15	15	15
YELLOW	3	3	3
ALL RED	0	0	0

ØD WOOD ACTUATED

INITIAL	4	4	4
VEHICLE EXT.	3	3	3
MAX.	10	10	10
YELLOW	3	3	3
ALL RED	0	0	0

CALC. BY E.G. DATE 11-11-74  
CKD. BY D.D. DATE 1-31-75

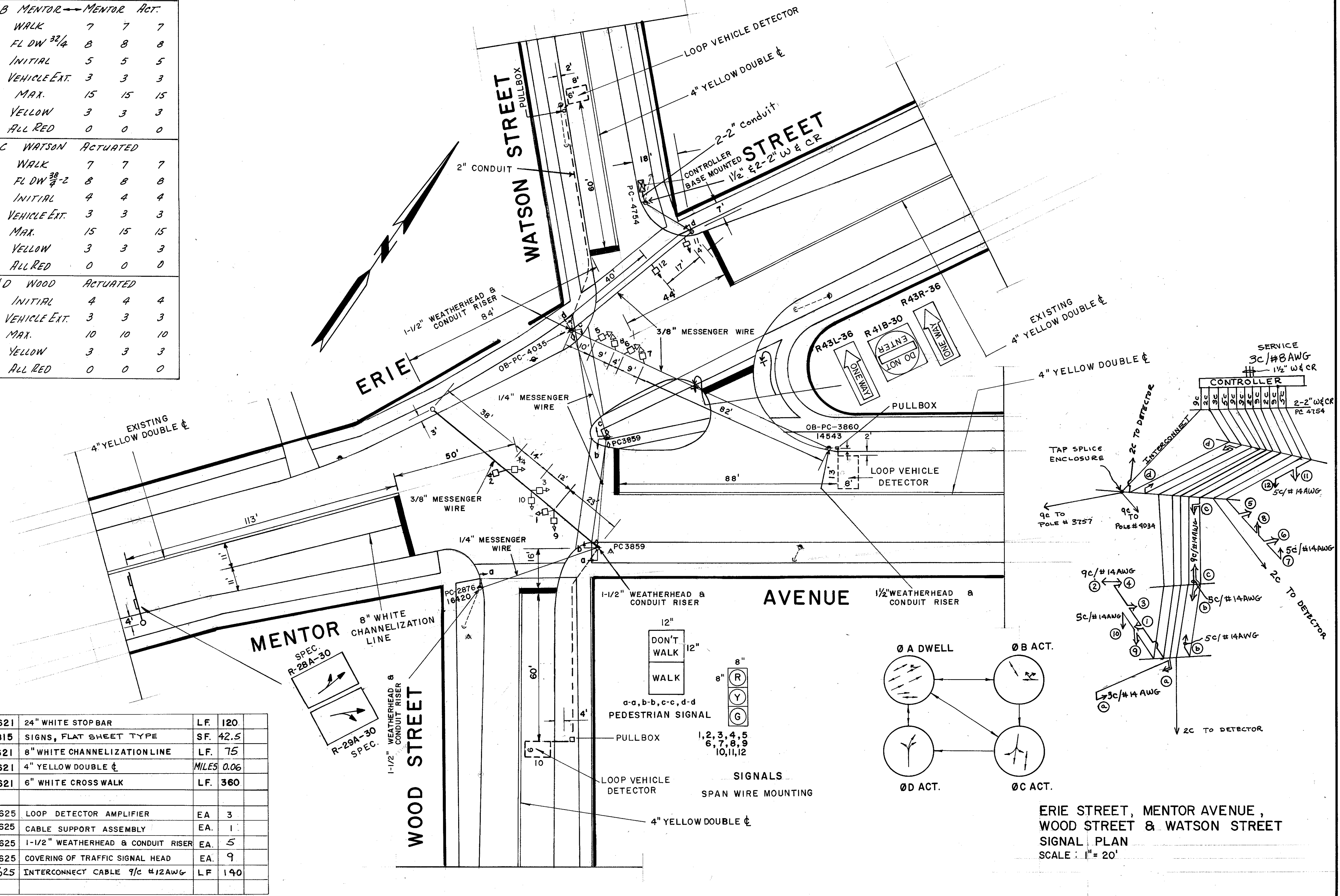
FED. RD. DIV.	STATE	PROJECT
5	OHIO	T-4030-(13)

17  
38

LAKE COUNTY  
LAK. - 20-14.30  
LAK. - 86-0.25  
AND WASHINGTON STREET  
AND ST. CLAIR STREET

ITEM	DESCRIPTION	UNIT	QUANTITY
816	SIGNAL SUPPORT, 3GA, 10" X 6.36" X 26'-0"	EA.	2
816	OVERHEAD SIGN SUPPORT 16.10 DESIGN 2-MODIFIED, 22' ARM	EA.	1
816	CONCRETE FOR SIGNAL SUPPORT FDN.	CY.	2
816	CONCRETE FOR CONTROLLER FDN.	CY.	0.9
625	TRAFFIC SIGNAL HEAD, 3 SECTION, 8" LENS 1 WAY - SPAN WIRE	EA.	6
616	STRUCTURAL SUPPORT DRIVEN NO. 4	L.F.	
625	PEDESTRIAN SIGNAL HEAD-INCANDESCENT TYPE 12" X 12", 1 WAY	EA.	2
625	PEDESTRIAN SIGNAL HEAD-INCANDESCENT TYPE 12" X 12", 2 WAY	EA.	3
625	SIGNAL CONTROLLER, SECONDARY, TYPE III BASE MTD. CABINET	EA.	1
625	GROUND ROD	EA.	4
816	CONCRETE FOR SIGN SUPPORT FDN.	CY.	0.9
625	PULL BOX 713.09	EA.	3
625	TRENCH	EA.	175
625	LOOP DETECTOR PAVEMENT CUTTING	L.F.	111
625	3" CONDUIT 713.04	L.F.	5
625	2" CONDUIT 713.04	L.F.	180
625	SIGNAL CABLE - 9C / #14 AWG	L.F.	732
625	LOOP DETECTOR WIRE	L.F.	320
625	LOOP DETECTOR LEAD-IN CABLE	L.F.	906
625	1/4"-7 STRAND SPAN WIRE	L.F.	142
625	3/8"-7 STRAND SPAN WIRE	L.F.	266
625	POWER CABLE - 3C / # 8 AWG	L.F.	42
625	SIGNAL CABLE - 3C / # 14 AWG	L.F.	550
625	SIGNAL CABLE - 5C / # 14 AWG	L.F.	508
625	PEDESTRIAN PUSH BUTTON W/SIGN	EA.	4
816	STRUCTURAL SUPPORT No. 6 Post	L.F.	32
	DRIVEN, AS PER PLAN	L.F.	
202	REMOVAL OF EX. SIGNAL INSTALLATION	EA.	1
625	TRAFFIC SIGNAL HEAD 3 SECTION, 8" LENS, 2 WAY - SPAN WIRE	EA.	3
625	2" CONDUIT RISER W/WEATHERHEAD	EA.	2

621	24" WHITE STOP BAR	L.F.	120
815	SIGNS, FLAT SHEET TYPE	SF.	42.5
621	8" WHITE CHANNELIZATION LINE	L.F.	75
621	4" YELLOW DOUBLE C	MILES	0.06
621	6" WHITE CROSS WALK	L.F.	360
625	LOOP DETECTOR AMPLIFIER	EA.	3
625	CABLE SUPPORT ASSEMBLY	EA.	1
625	1-1/2" WEATHERHEAD & CONDUIT RISER	EA.	5
625	COVERING OF TRAFFIC SIGNAL HEAD	EA.	9
625	INTERCONNECT CABLE 9C #12AWG	L.F.	140



ERIE STREET, MENTOR AVENUE,  
WOOD STREET & WATSON STREET  
SIGNAL PLAN  
SCALE: 1" = 20'