

DATE		APPLIES ON CAM CHART	COLOR SEQUENCE CHART															
DRAWN			MENTOR & ROOSEVELT															
CHECKED		PAINESVILLE, OHIO																
APPROVED																		
STREETS	NUMBER OF SIGNALS	DIAL SETTINGS (SECONDS OR PERCENT)																
		LENS		INTERVAL												FLASH		
		ΦA DWELL	ΦB ACT.	1	2	3	4	5	6	7	8	9	10	11	12	13	14	
X	MENTOR	DW	X	X	X	X	X											
		FDW							X									DARK
		W						X										
X	ROOSEVELT	DW		X	X	X	X											DARK
		FDW	X															
		W		X														
		G						X	X	X								X
		R	X	X	X													
		Y				X	X	X										X
		G	X	X	X													
		R				X	X	X										X
		Y				X	X	X										X
		G	X	X	X													

MENTOR @ ROOSEVELT

	60 CYCLE	70 CYCLE	75 CYCLE
ΦA	65%	70%	72%
WALK	7	7	7
FL DW	9	9	9
MIN. GREEN	30	40	45
YELLOW	3	3	3
ALL RED	0	0	0
ΦB ACTUATED			
WALK	7	7	7
FL. DW	11	11	11
INITIAL	3	3	3
VEHICLE EXT.	3	3	3
MAX.	18	18	18
YELLOW	3	3	3
ALL RED	0	0	0

CALC. BY E.G. DATE 11-11-74
CKD. BY D.D. DATE 1-31-75

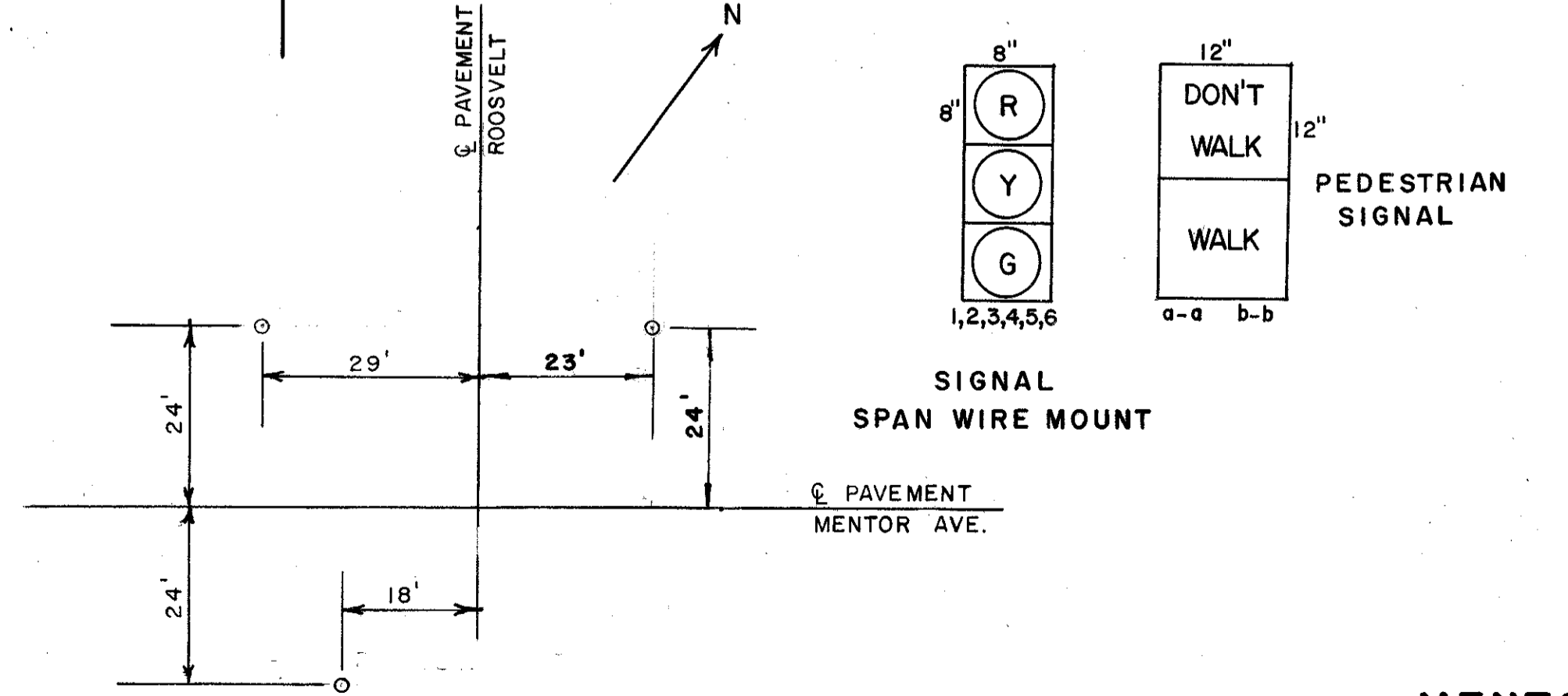
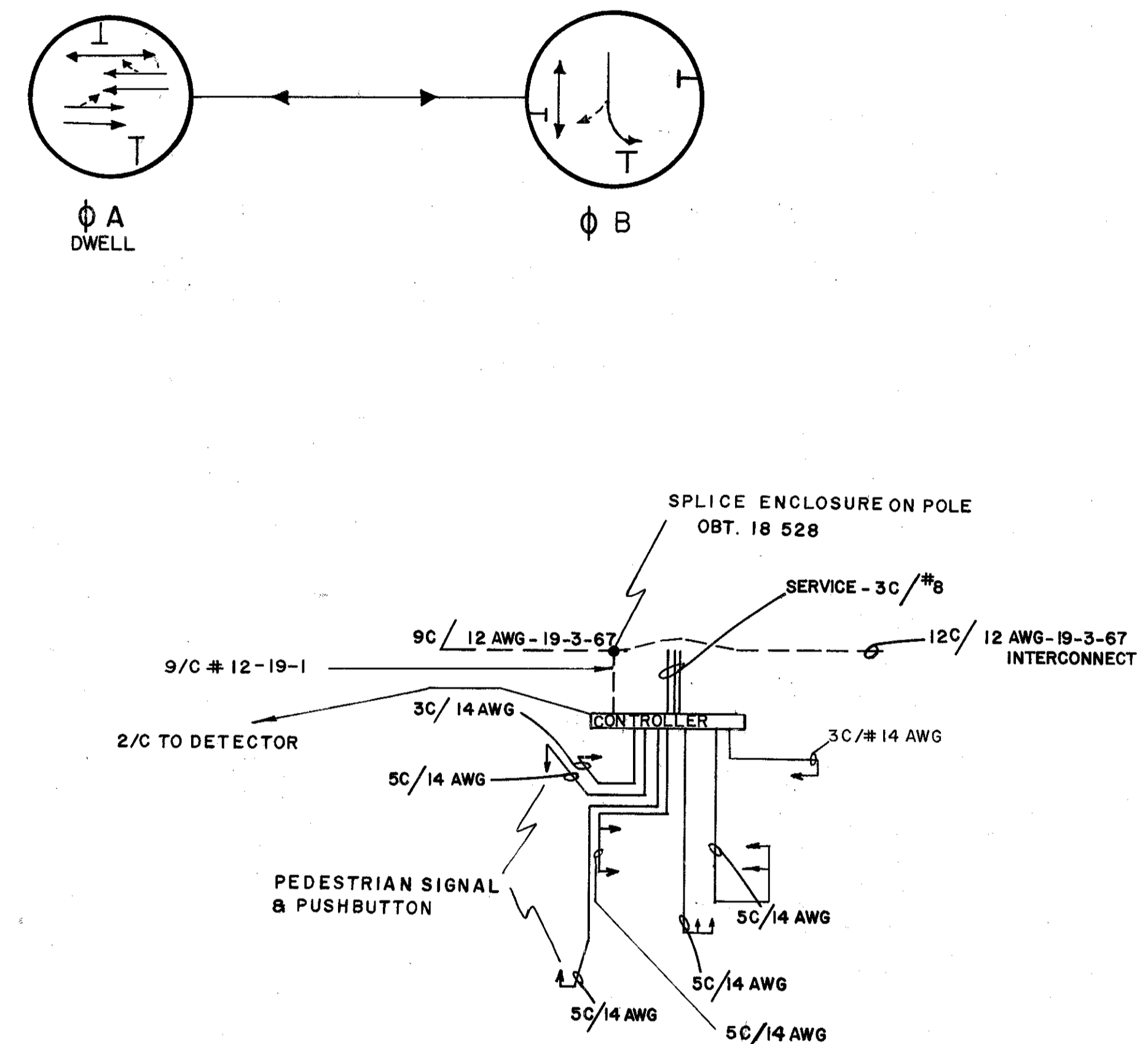
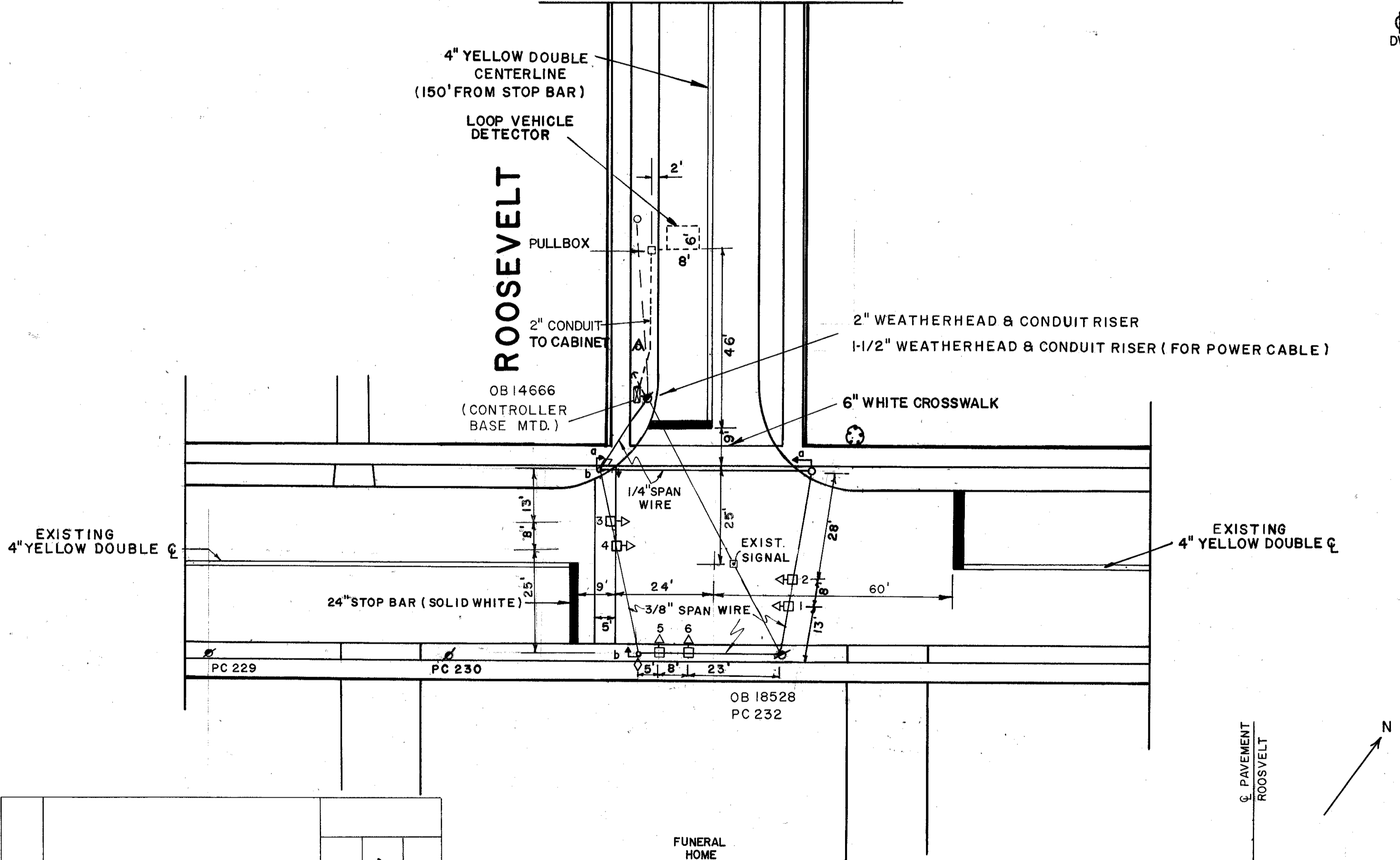
FED. RD. DIV.	STATE	PROJECT	
5	OHIO	T-4030-(13)	

LAKE COUNTY
LAK. - 20-14.30
LAK. - 86-0.25
AND WASHINGTON STREET
AND ST. CLAIR STREET

DRAWING NO.
FDW = FLASHING "DON'T WALK"

ITEM	DESCRIPTION	UNIT	QUANTITY
816	SIGNAL STRAIN POLE, 3GA., 10" X 6.36 X 26'-0"	EA.	3
816	CONCRETE FOR SIGNAL SUPPORT FOND.	CY.	3
816	CONCRETE FOR CONTROLLER FOND.	CY.	0.9
625	TRAFFIC SIGNALS, SPAN WIRE, 8" R, 8" Y, 8" G 3 SECTION	EA.	6
625	PEDESTRIAN SIGNAL INCANDESCENT, 12" X 12" ONE WAY	EA.	2
625	PEDESTRIAN SIGNAL INCANDESCENT, 12" X 12" 2 WAY	EA.	1
625	PEDESTRIAN PUSH BUTTON W/ SIGN	EA.	2
625	SIGNAL CONTROLLER, SECONDARY, BASE MTD., TYPE II	EA.	1
625	GROUND ROD	EA.	4
625	LOOP DETECTOR PAVEMENT CUTTING	LF	30
625	PULL BOX (713.09)	EA.	1
625	TRENCH	LF	43
625	2" CONDUIT RISER W/WEATHER HEAD	EA.	1
625	3" CONDUIT (713.04)	LF	5
625	2" CONDUIT (713.04)	LF	38
625	INTERCONNECT CABLE 9/C #12AWG	LF	162
625	1/4" 3 STRAND SPAN WIRE	LF	76
625	3/8" 7 STRAND SPAN WIRE	LF	131
625	LOOP DETECTOR WIRE	LF	94
625	LOOP DETECTOR LEAD IN CABLE	LF	40
625	SIGNAL CABLE - 3C/#14 AWG	LF	200
625	SIGNAL CABLE - 5C/#14 AWG	LF	531
625	POWER CABLE - 3C/#8 AWG	L.F.	42
202	REMOVAL OF EXIST. SIGNAL INSTALL.	EA.	1

ITEM	DESCRIPTION	UNIT	QUANTITY
621	24" WHITE STOP BAR	LF.	57
621	4" YELLOW DOUBLE C	MILES	0.03
621	6" WHITE CROSSWALK	LF.	167
625	LOOP DETECTOR AMP.	EA.	1
625	CABLE SUPPORT ASSEMBLY	EA.	3
625	COVERING OF TRAFFIC SIGNAL HEAD	EA.	6
625	1/2" WEATHERHEAD & CONDUIT RISER	EA.	1



MENTOR AVENUE AND ROOSEVELT STREET
SIGNAL PLAN
SCALE: 1" = 20'