

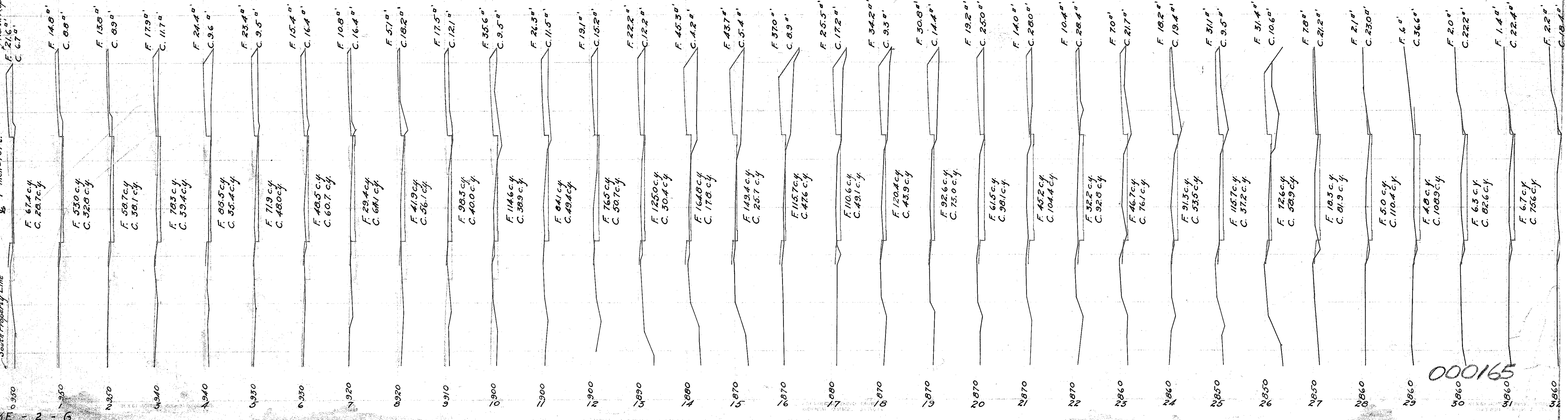
LAKE COUNTY STAIR HIGHWAY CLEVELAND - BUFFALO ROAD

PETITION NO. 852

I.C.H. No. 2 - SR. 20

CROSS SECTIONS

South Property Line & 1-inch = 10 ft.

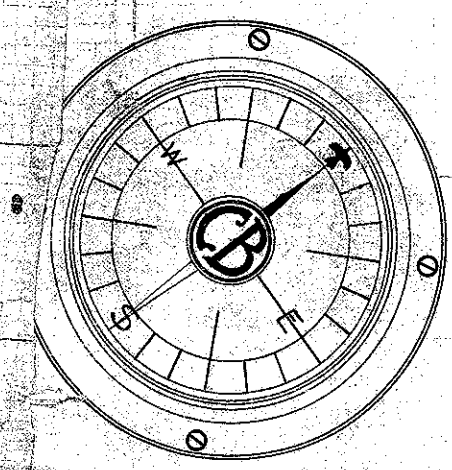


From Sta. 0 to Sta. 10
Fill - 635.9 Cu. Yds.
Cut - 443.3 cu. yds.

CONSTRUCTION BUREAU
APR 6 1956
GROUND PHOTOLAB

From Sta. 10 to Sta. 20
Fill - 1153.1 Cu. yds.
Cut - 426.5 Cu. yds.

From Sta. 20 to Sta. 30
Fill - 493.3 Cu. yds.
Cut - 822.2 Cu. yds.



U.S.R. 20
14.24
FANNY WHITE SILVERTHO

TOWNSHIP
TOWNSHIP

LINE
LINE

THE MILTON REALTY CO.

ALICE M. PARMELEE

R. G. MILLER

Elev. 83.1

B.M. #22 - Elev. 686.03
Knob cut on SW cor.
of N. wall of culvert
at Sta. 0+40

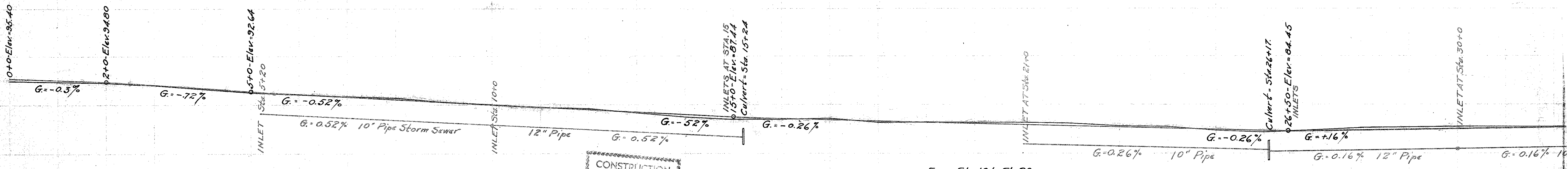
J. C. GILCHRIST
B.M. #21 - Elev. 692.13
Spike in S. root of 48"
Locust, 27' N. of E. at
Sta. 4+99

R. G. MILLER
B.M. #20 - Elev. 690.48
+ on stone base of W.
gate post 30' N. of Sta.
9+41

B.M. #19 - Elev. 687.04
Knob cut on N.E. cor.
of N. wall of culvert
at Sta. 15+27

WARREN H. YOUMAN
B.M. #18 Elev. 686.03
Spike in S. root of 24"
Maple, 21' N. of E. at
Sta. 21+92

FANNY WHITE SILVER
B.M. #17 Elev. 685.61
x on N.E. cor. of cement
Platform, 20' S. of E.
at Sta. 29+88



000165