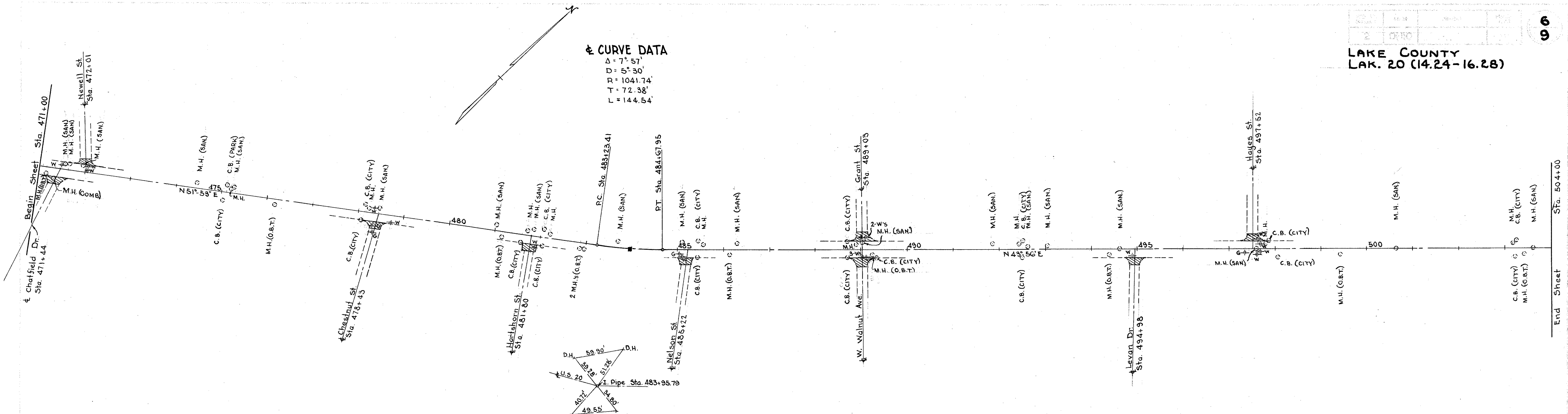
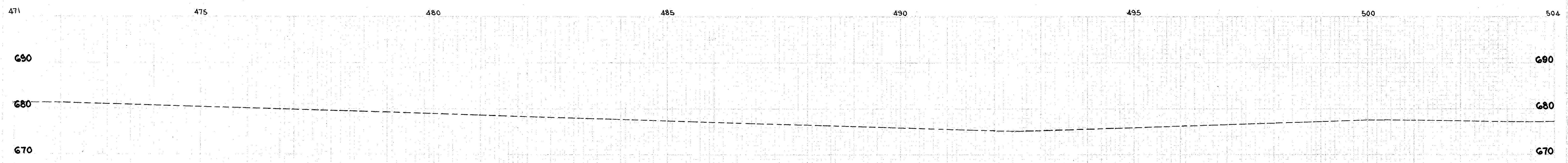


**CURVE DATA**  
 $\Delta = 7^\circ 57'$   
 $D = 5^\circ 30'$   
 $R = 1041.74'$   
 $T = 72.38'$   
 $L = 144.54'$



**E-8 Removal and Disposal of Existing Wearing Course**  
 $\text{Sta. } 471+00 \text{ to Sta. } 504+00 = 3300 \times 2 = 6600' \times 5' \div 9 = 3667 \text{ Sq. Yds.}$   
 From Extra Area Below  
 $\frac{328}{3995} \text{ " "}$



**CASTINGS ADJUSTED TO GRADE**  
 Monument Boxes 1 Each  
 Sanitary Manholes 19 "  
 Storm Manholes 10 "  
 Water Valves 17 "

EXTRA AREA			
LOCATION	T-35 1 1/4" Av. Asphaltic Concrete Surface Course	E-8 Removal of Existing Wearing Course	T-30 Bituminous Tack Coat
	Sq. Yds.	Sq. Yds.	Sq. Yds.
Chatfield Dr. 471+44	40	20	40
Newell St. 472+01.5	39	39	39
Chestnut St. 478+43.5	40	40	40
Hartshorn St. 481+80	52	52	52
Nelson St. 485+22	29	14	29
W. Walnut St. 489+03	51	51	51
Grant St. 489+03	54	54	54
Layon Dr. 494+98	31	26	31
Hayes St. 497+52	42	32	42
<b>TOTAL</b>	<b>378</b>	<b>328</b>	<b>378</b>