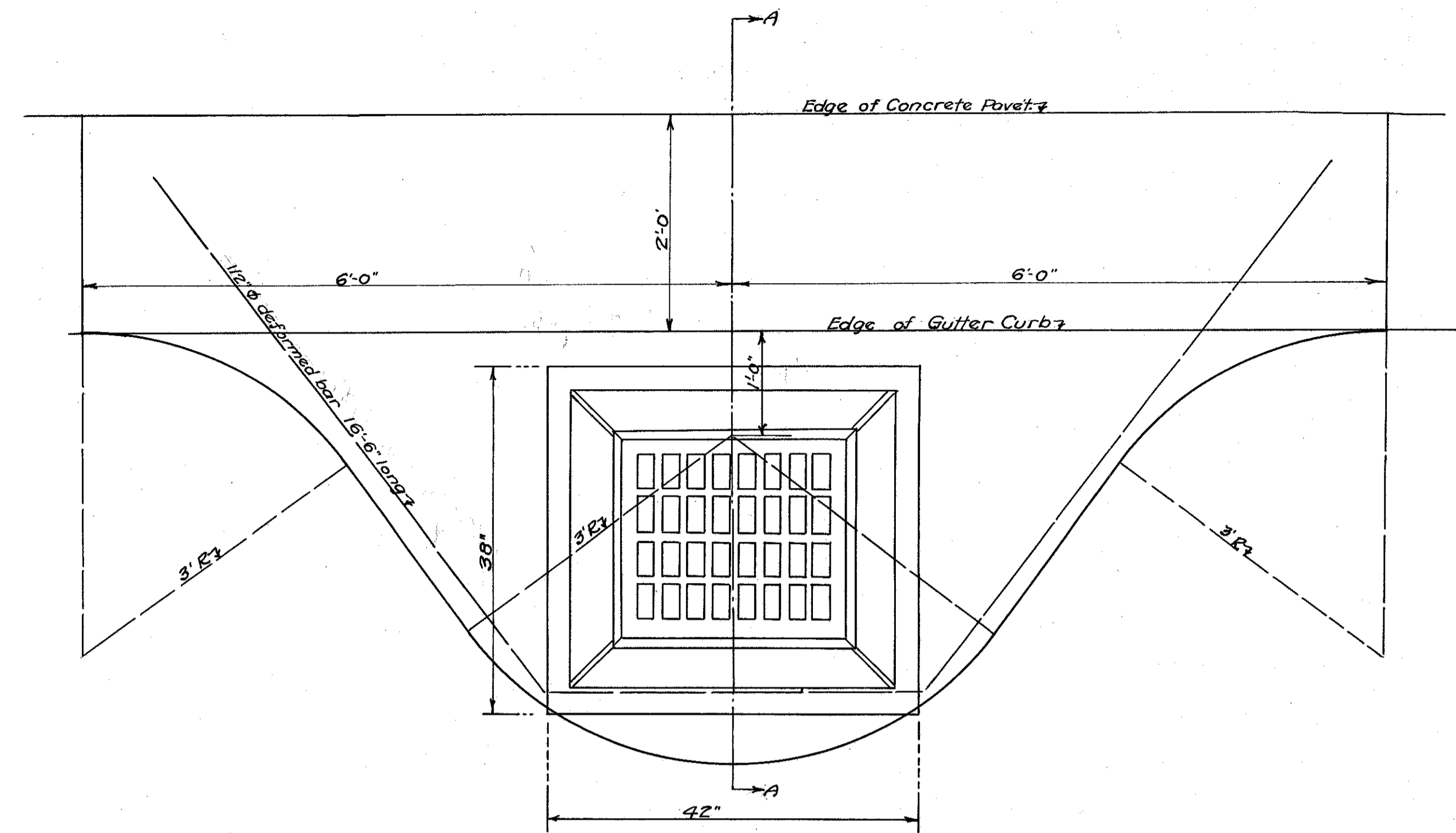
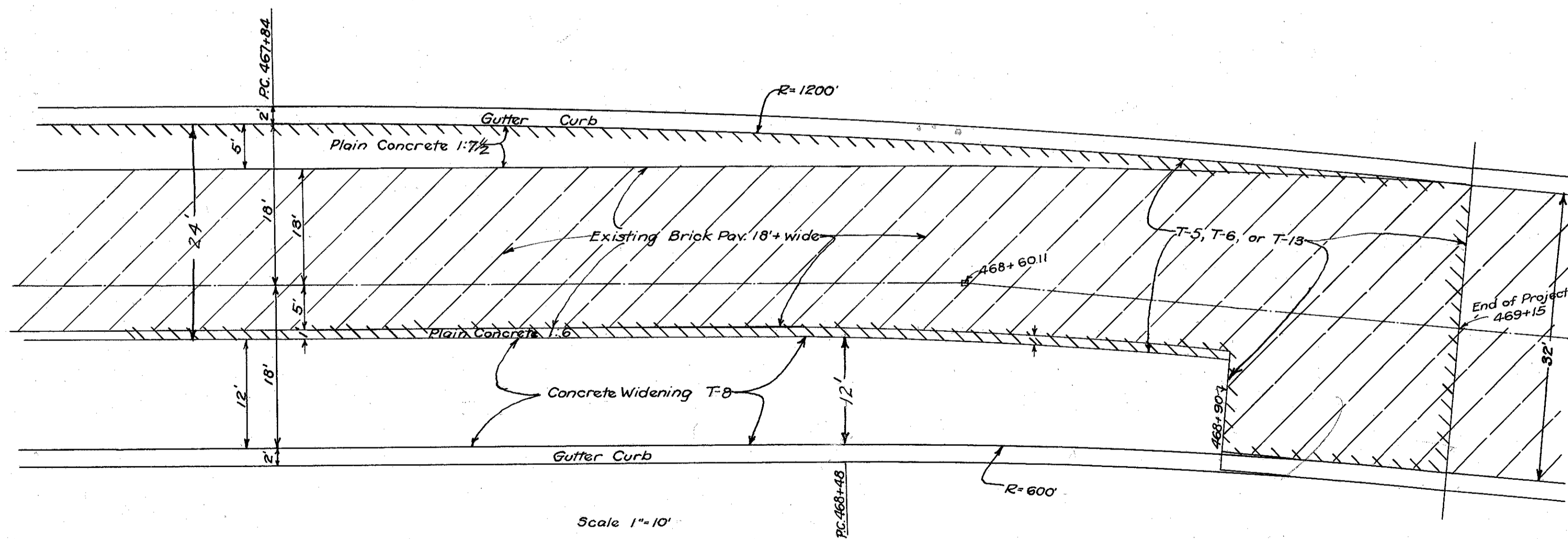


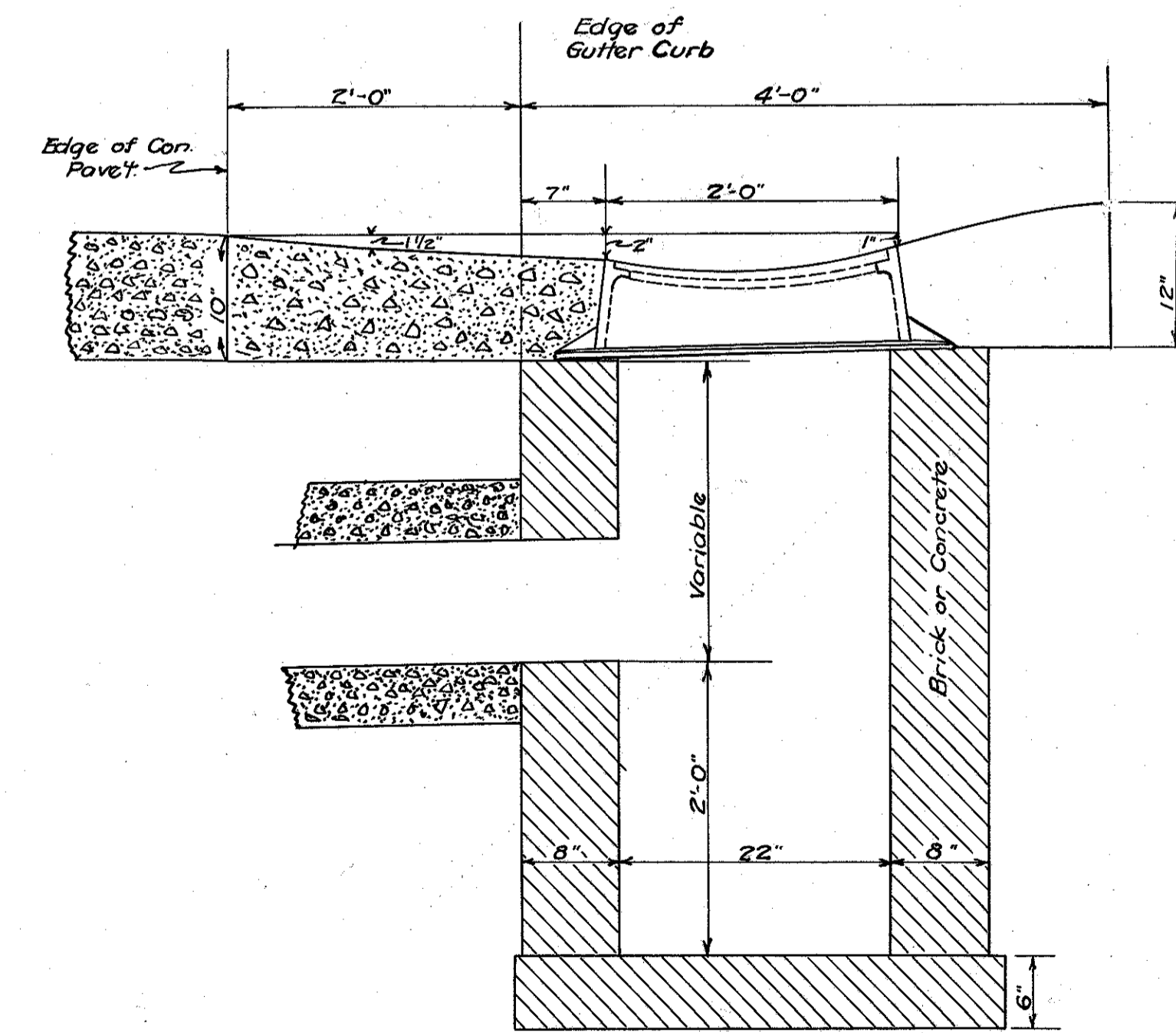
Detail of Beginning of Project
 Additions: - 65.3 sqyds. T-5, T-6 or T-13 bituminous pavement
 27.1 " 1 1/2 concrete (8") [12' Strip]
 Deductions: - 15.8 " 1 1/2 concrete (10'-8"-10') [5' Strip]
 65.3 " 1-6 reinf. concrete (10'-8"-10') [12' Strip]



Plan of Standard Catch Basins
 Note: Present Inlet Basin tops to be reset.
 1-6 Concrete and 1/2" bar around castings to be considered as part of the Catch Basins.



Detail of transition at end of project
 Additions: 9.0 Sqyds. T-5, T-6 or T-13 bituminous pave't.
 Deductions: 31.0 Sqyds. 1 1/2 Concrete (10'-8"-10')-5' Strip
 41.0 Sqyds. 1-6 Reinforced Concrete-12' Strip
 2.5 Sqyds. 1 1/2 Concrete (8")-12' Strip



Section A-A.