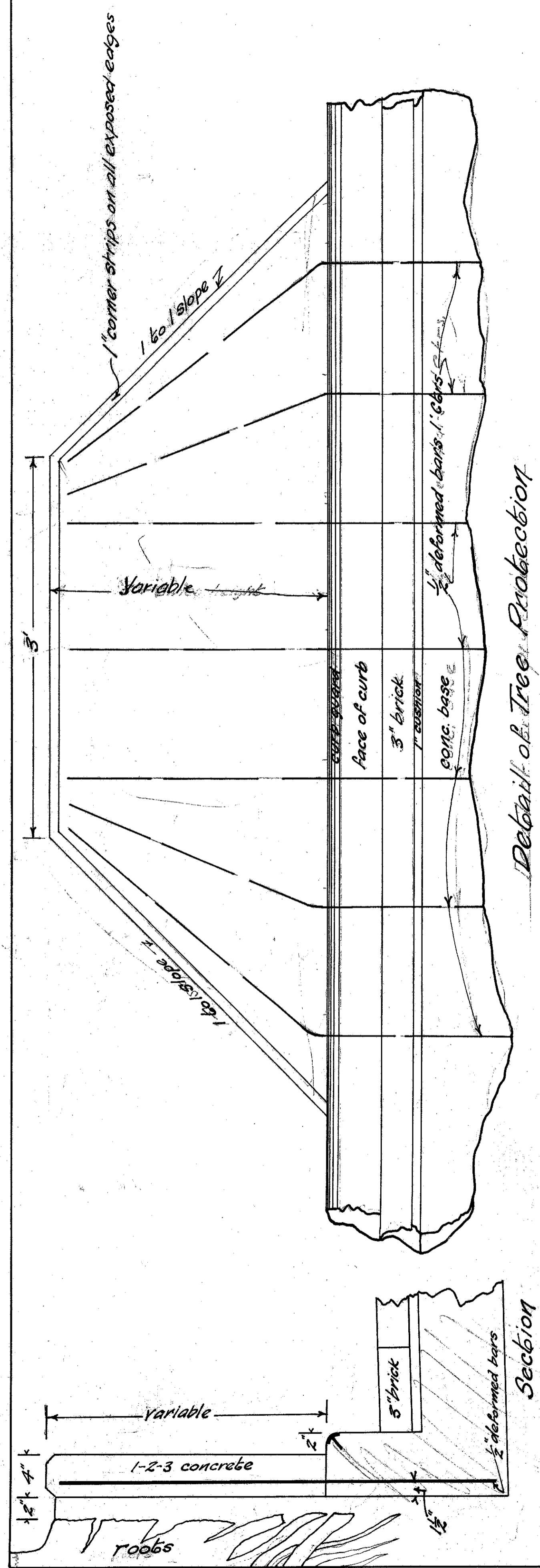
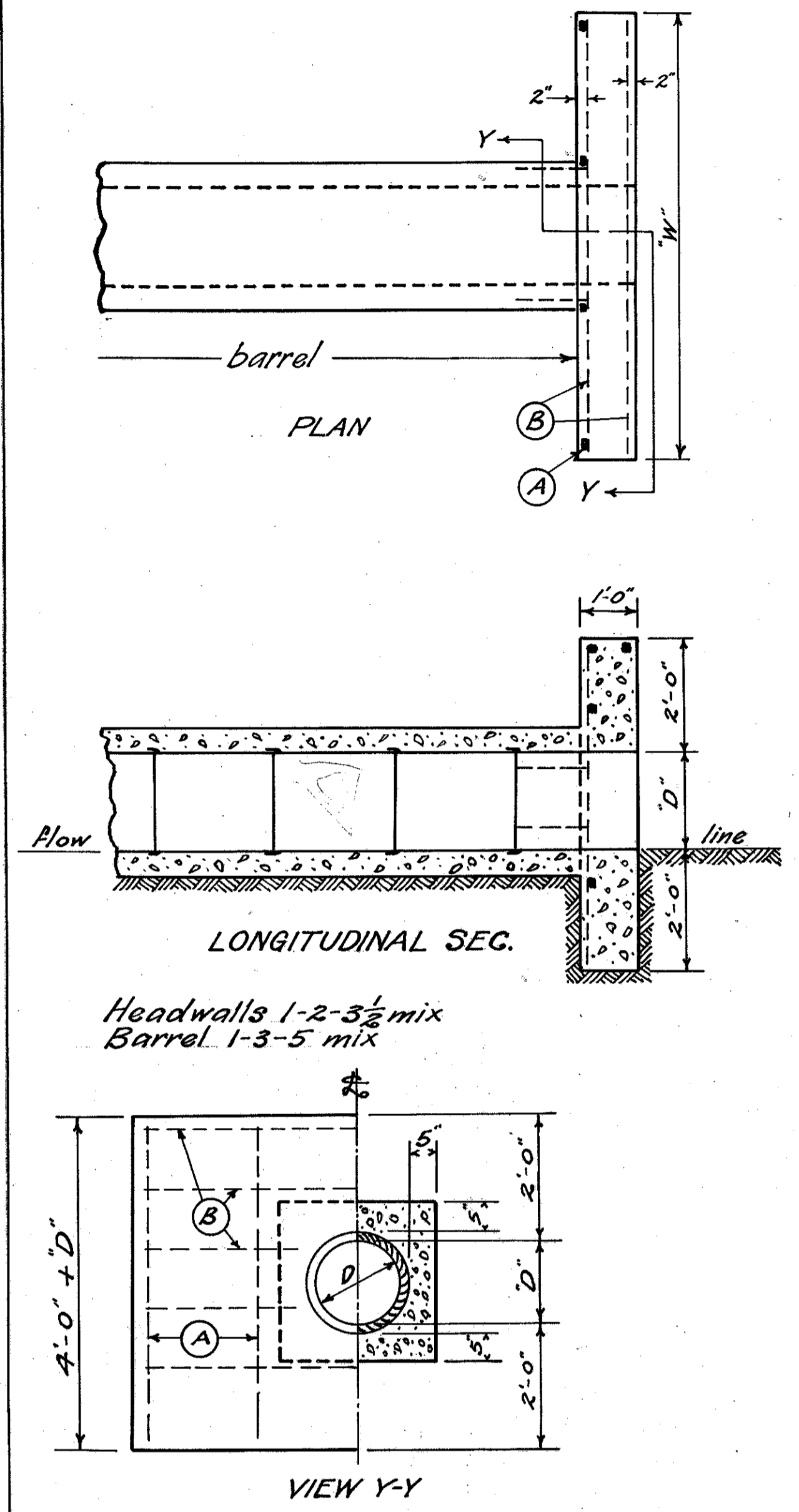


I.C.H. No. 2 SEC. 1 & B.
LAKE COUNTY

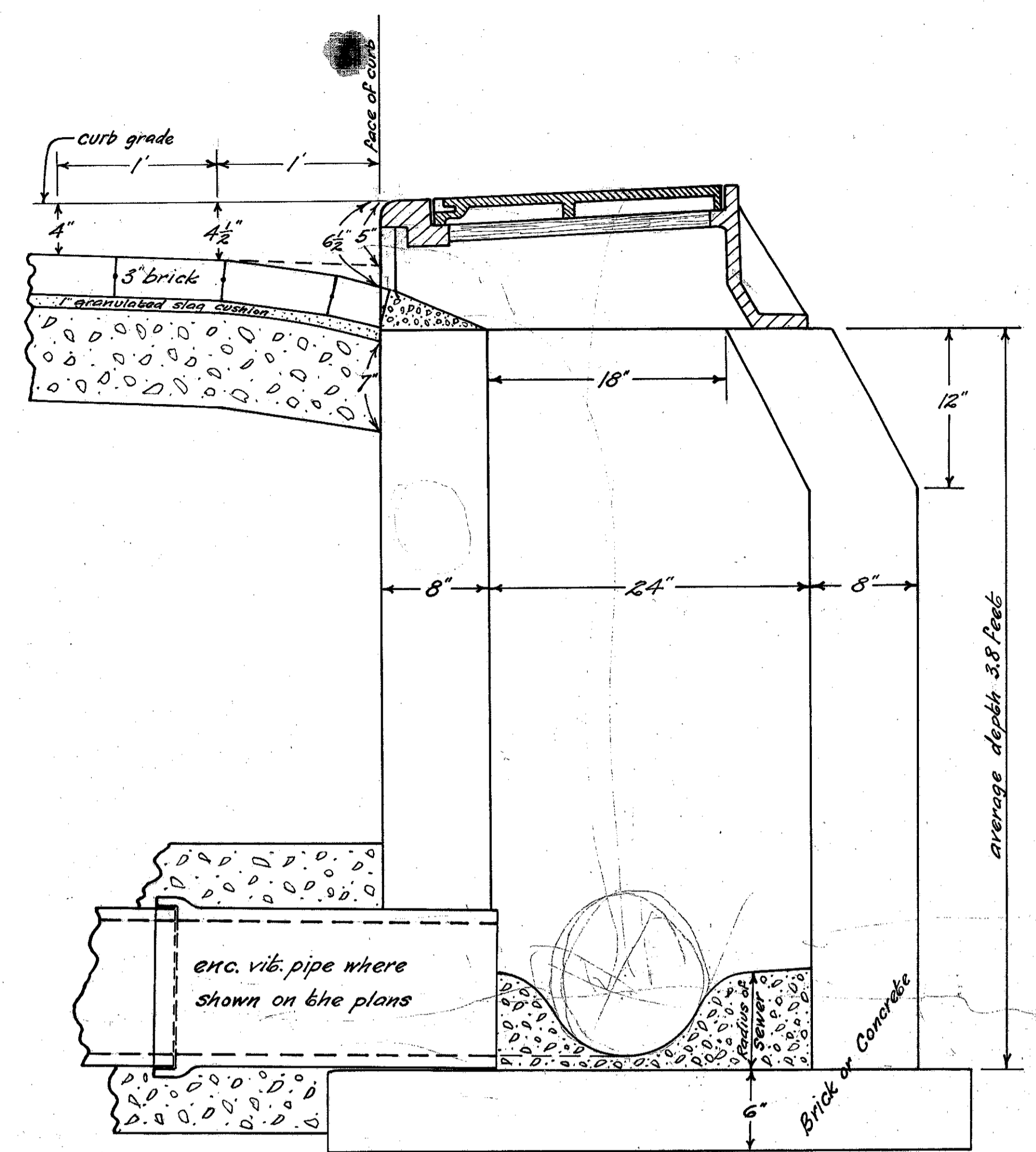


Detail of Tree Protection

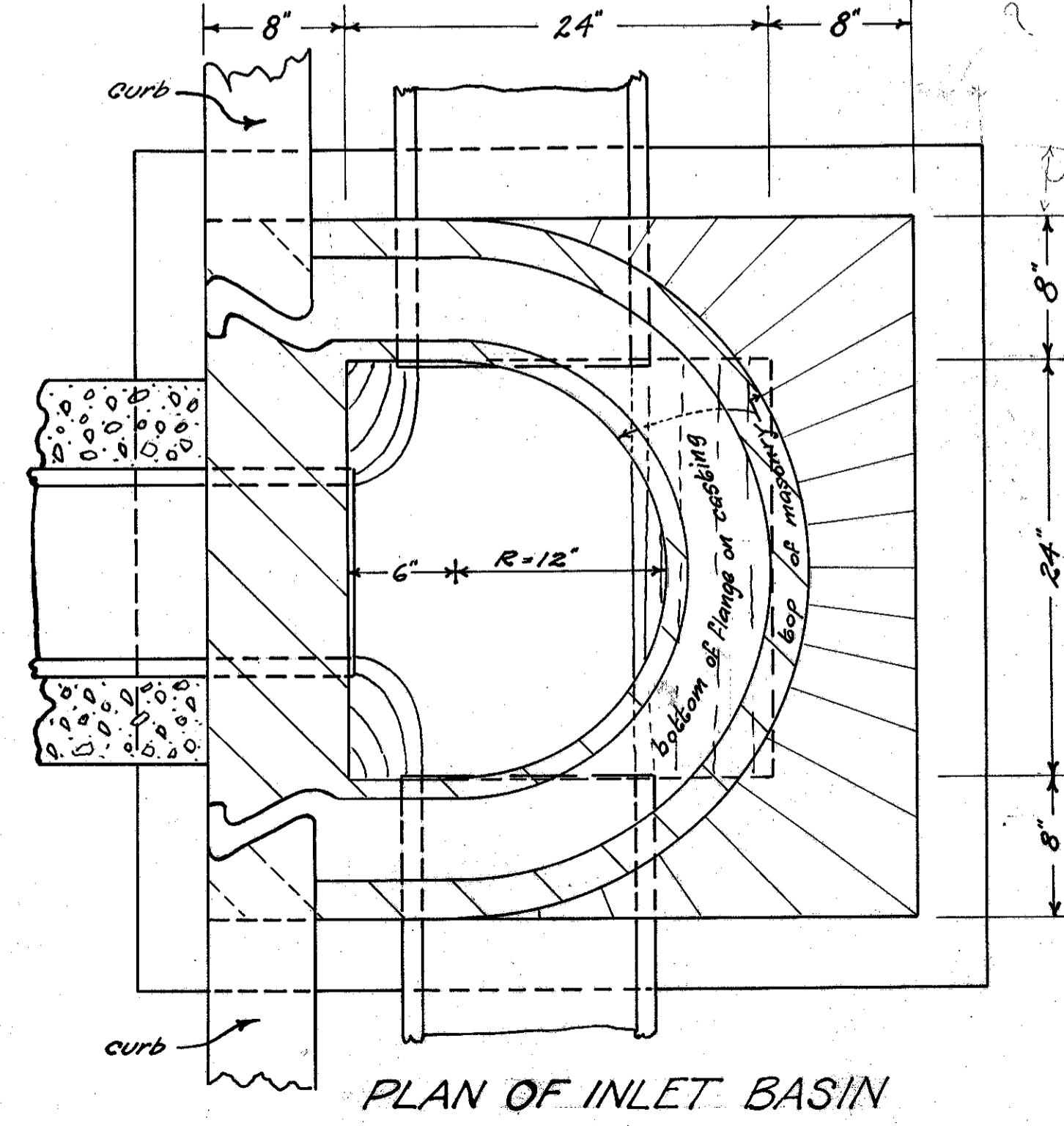


QUANTITIES IN HEADWALLS & BARREL ENCASED VITRIFIED PIPE CULVERTS

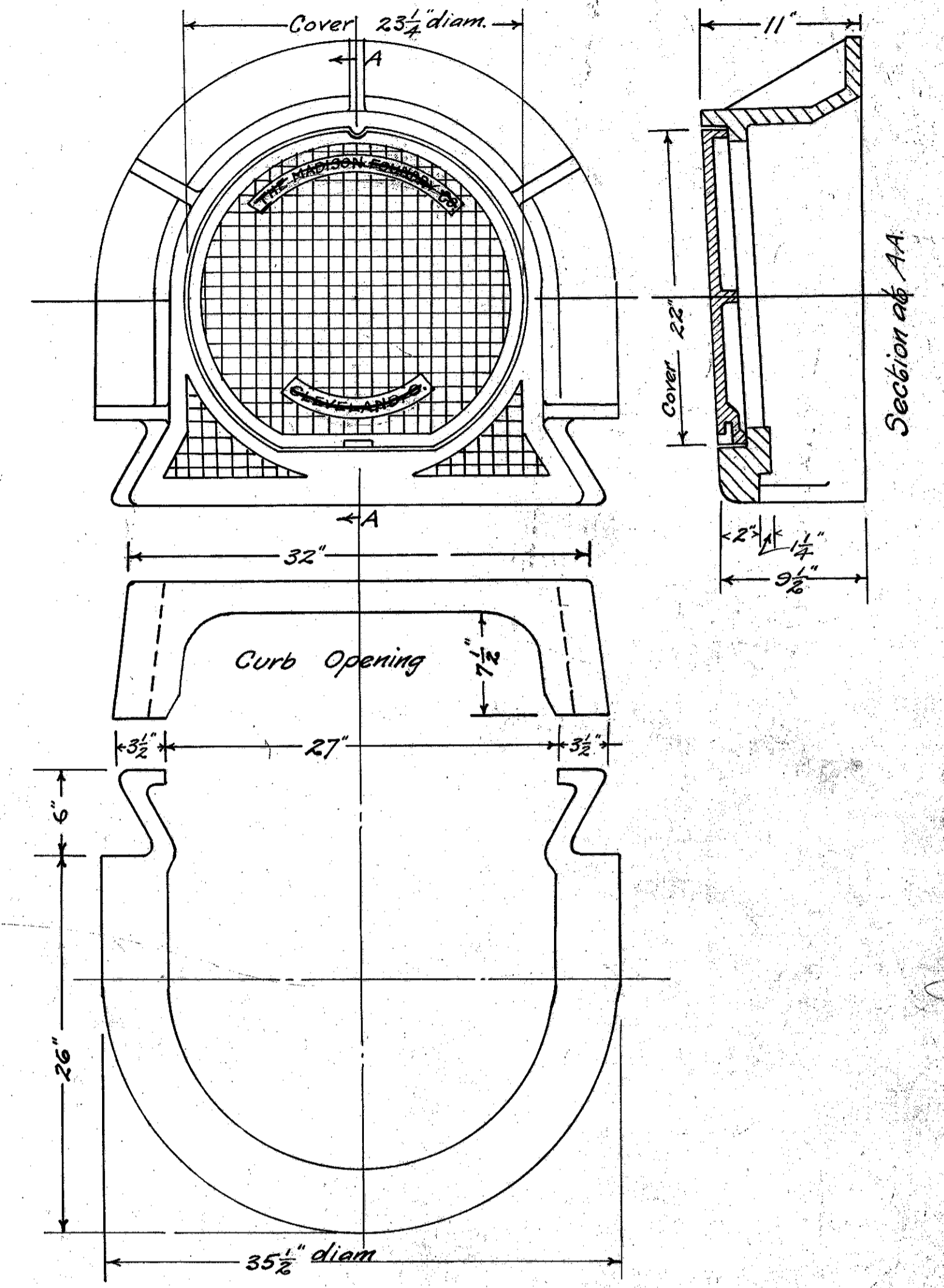
| "D" diam pipe | "W" width headwall | BARSA no. length | BARSB no. length | STEEL lbs. | CU YDS CON. headwall | CON. PIPE |
|---------------|--------------------|------------------|------------------|------------|----------------------|-----------|
| 12" | 5'-6" | 8 4'-6" | 12 5'-0" | 65 | 2.0 | .108 |
| 15" | 6'-3" | 8 4'-9" | 12 5'-9" | 70 | 2.3 | .130 |
| 18" | 7'-0" | 8 5'-0" | 12 6'-6" | 80 | 2.7 | .154 |
| 20" | 7'-6" | 8 5'-3" | 12 7'-0" | 85 | 3.0 | .172 |
| 22" | 8'-0" | 8 5'-6" | 12 7'-6" | 90 | 3.2 | .192 |
| 24" | 8'-6" | 8 5'-6" | 14 8'-0" | 105 | 3.5 | .206 |
| 27" | 9'-6" | 8 5'-9" | 14 9'-0" | 115 | 4.0 | .239 |
| 30" | 10'-6" | 8 6'-0" | 14 10'-0" | 125 | 4.6 | .268 |
| 33" | 11'-6" | 8 6'-3" | 16 11'-0" | 150 | 5.2 | .291 |
| 36" | 12'-6" | 8 6'-6" | 16 12'-0" | 165 | 5.8 | .328 |



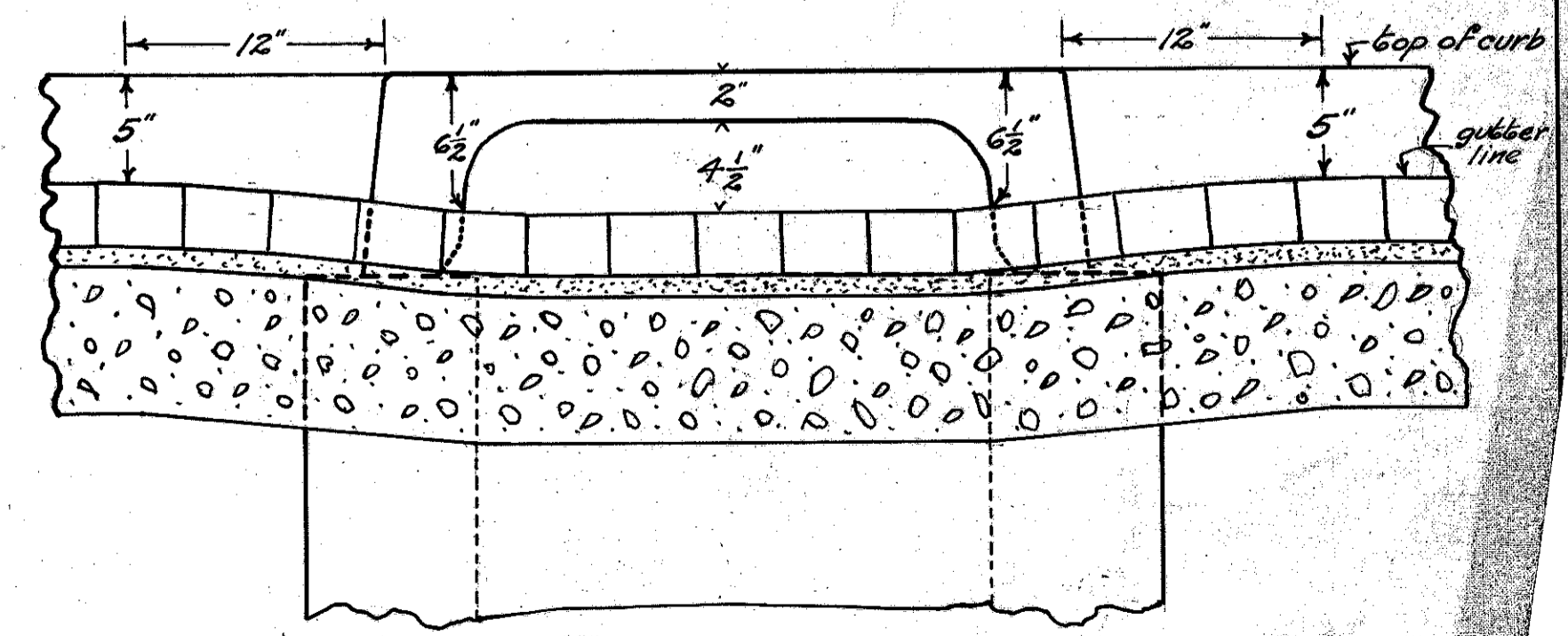
SECTION OF STANDARD INLET BASIN



PLAN OF INLET BASIN



PLAN OF STANDARD INLET BASIN FRAME & COVER weight complete 450 lbs.



DETAIL SHOWING GUTTER LINE