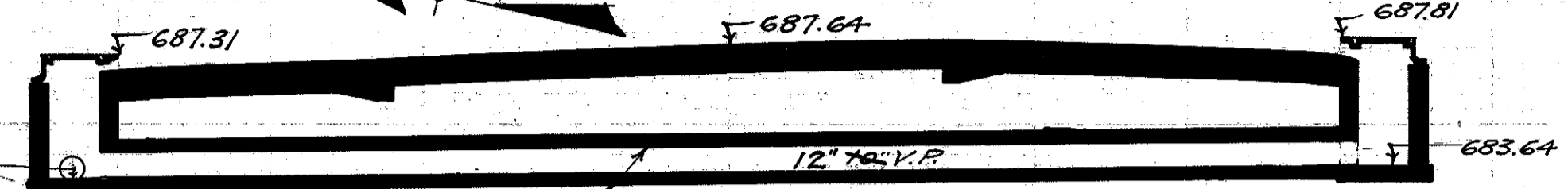
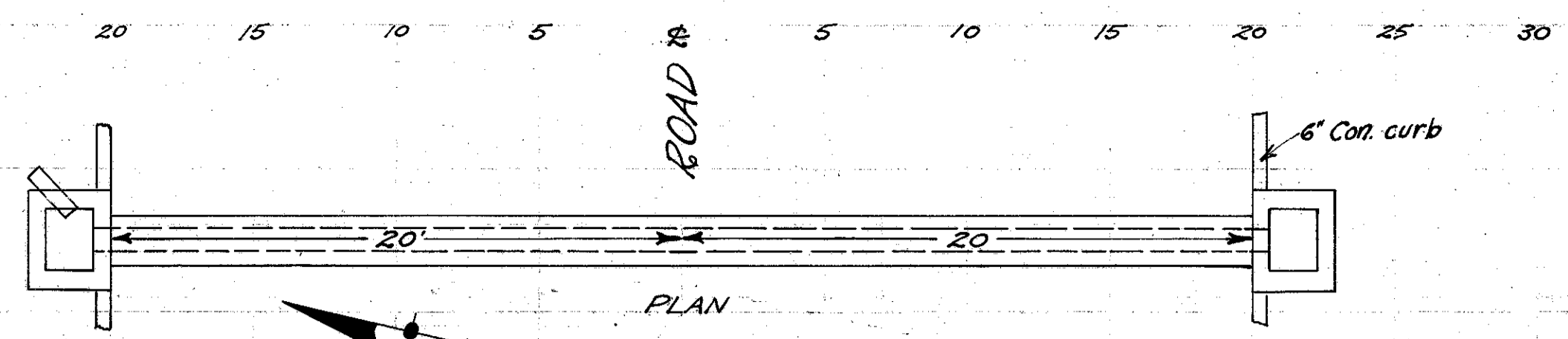


FED. RD DIST. NO.	STATE	FED AID PROJECT	FISCAL YEAR	31
10	OHIO	519-A	1928	33

I.C.H. No. 2 Sec. 1 & B
LAKE COUNTY.

CULVERT No. 32
STA. 237+0

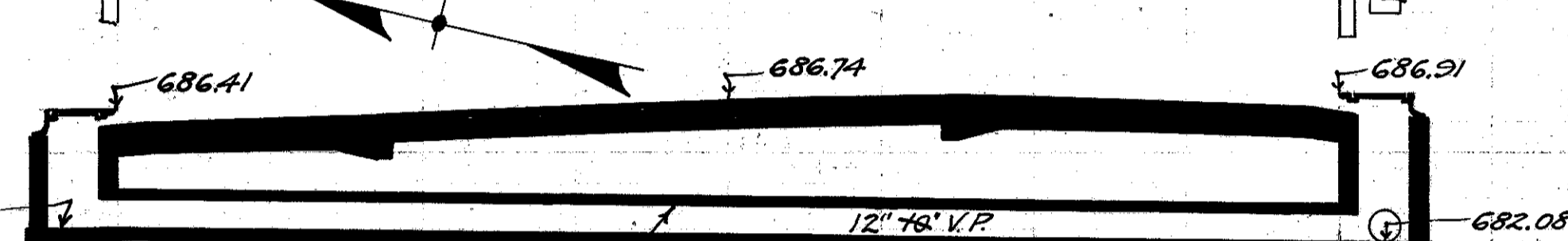
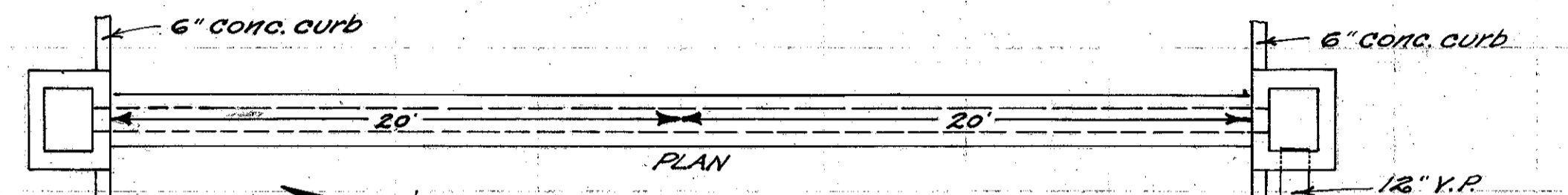


CULVERT DATA
Build 2 sbd. Inlet basins 1 21.5' 60 R. and 1 21.5' 60 L. of R. and connect with 12" enc. vib. pipe culvert.
Checked 7-18-27 R. A. Breen

CROSS-SECTION
5" 1-3-5 concrete

QUANTITIES
15.2 cu. yds. excavation
4.32 cu. yds. 1-8-3 concrete removed & rebuilt
4.2 lin. ft. 12" vib. pipe
2 sbd. Inlet basins
5.2 sq. yds. 4" brick pav. removed & rebuilt
5.4 sq. yds. 6" conc. base removed & rebuilt

CULVERT No. 31
STA. 229+10

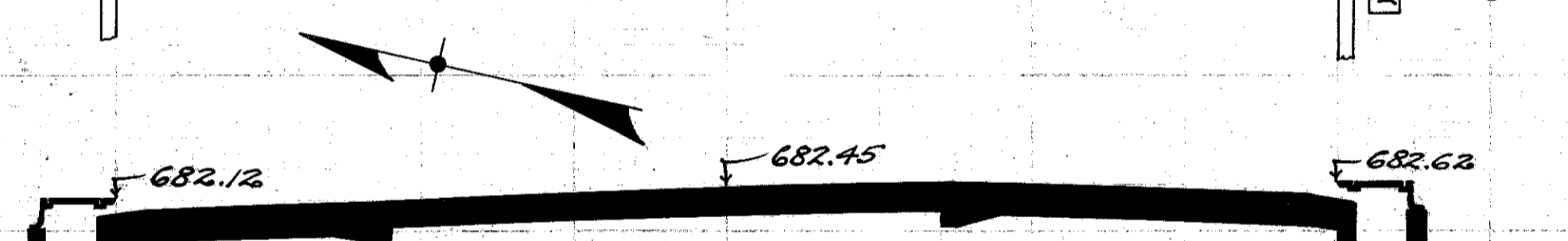
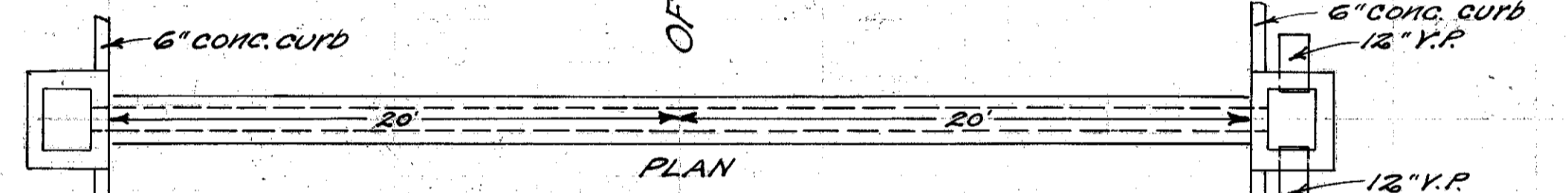


CULVERT DATA
Build 2 sbd. Inlet basins 1 21.5' 60 R. and 1 21.5' 60 L. of R. and connect with 12" enc. vib. pipe culvert.
Checked 7-18-27 R. A. Breen

CROSS-SECTION
5" 1-3-5 concrete

QUANTITIES
15.8 cu. yds. excavation
4.32 cu. yds. 1-8-3 concrete removed & rebuilt
4.2 lin. ft. 12" vib. pipe
2 sbd. Inlet basins
5.2 sq. yds. 4" brick pav. removed & rebuilt
5.4 sq. yds. 6" conc. base removed & rebuilt

CULVERT No. 30
STA. 225+50

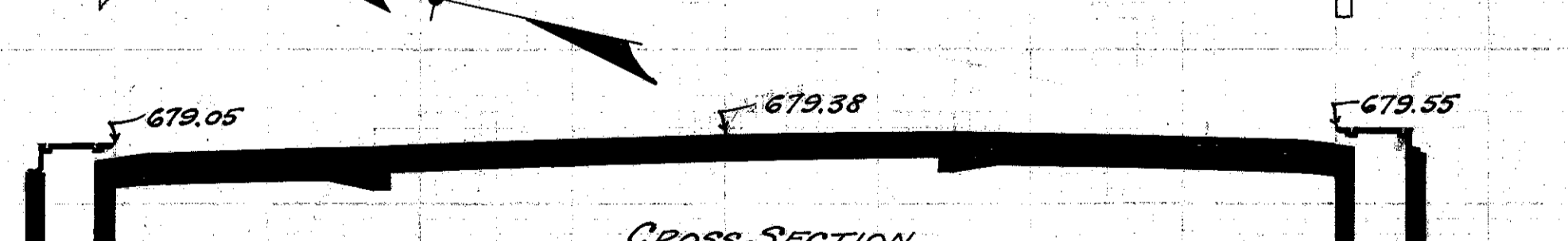
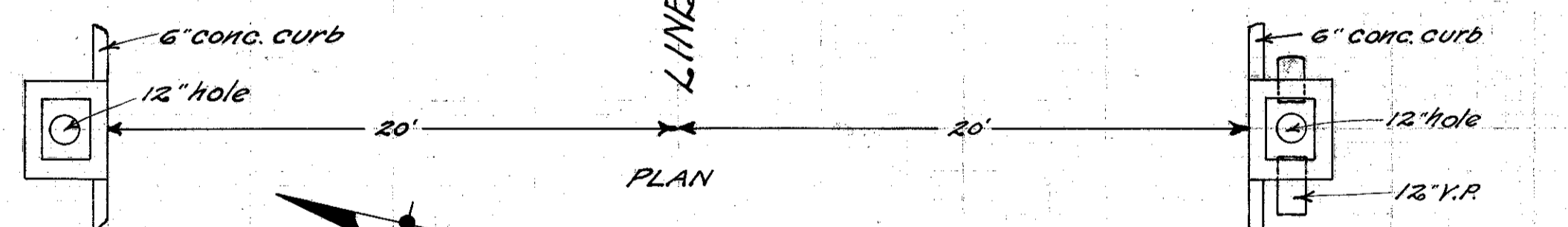


CULVERT DATA
Build 2 sbd. Inlet basins 1 21.5' 60 R. and 1 21.5' 60 L. of R. and connect with 12" enc. vib. pipe culvert.
Checked 7-18-27 R. A. Breen

CROSS-SECTION
5" 1-3-5 concrete

QUANTITIES
15.4 cu. yds. excavation
4.32 cu. yds. 1-8-3 concrete removed & rebuilt
4.2 lin. ft. 12" vib. pipe
2 sbd. Inlet basins
5.2 sq. yds. 4" brick pav. removed & rebuilt
5.4 sq. yds. 6" conc. base removed & rebuilt

CULVERT No. 29
STA. 221+58



CULVERT DATA
Build 2 sbd. Inlet basins 1 21.5' 60 R. and 1 21.5' 60 L. of R. and connect with stone box culvert.
Checked 7-18-27 R. A. Breen

CROSS-SECTION
5" 1-3-5 concrete

QUANTITIES
8.5 cu. yds. excavation
2 sbd. Inlet basins
12" hole thru top of present culvert
12" hole thru top of present culvert