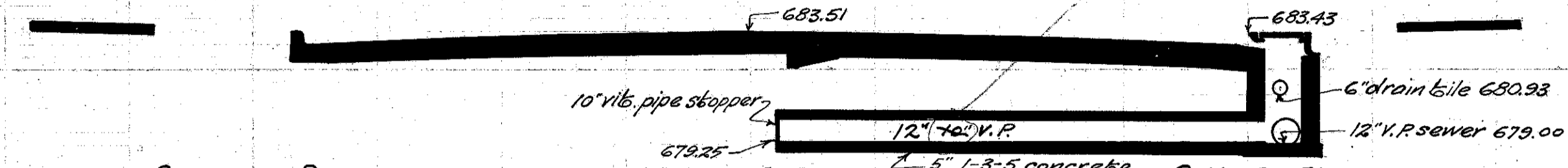
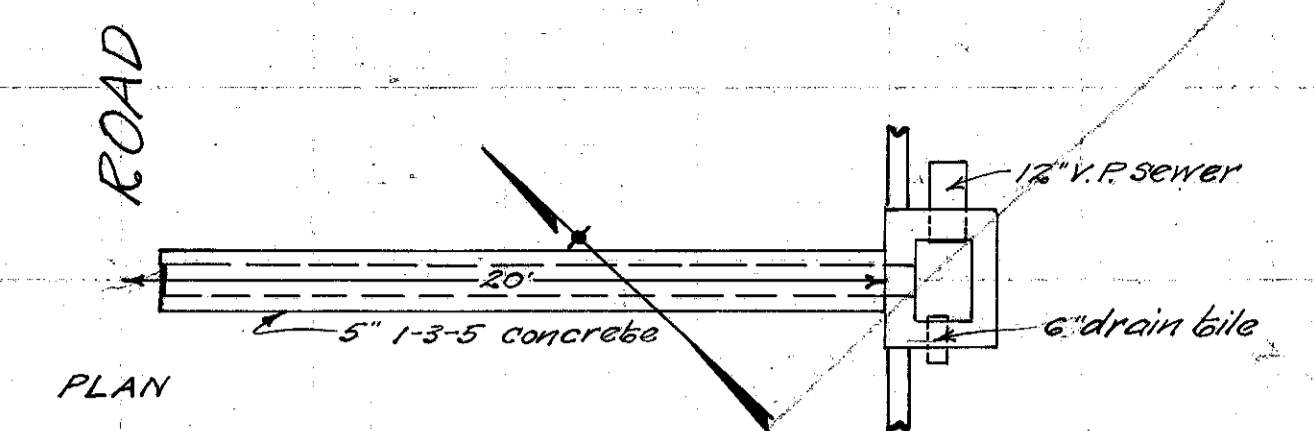


FED. RD. DIST. NO.	STATE	FED. AID PROJECT	FISCAL YEAR	27
10	OHIO	519-A	1928	33

I.C.H. No. 2 SEC. 1 & B
LAKE COUNTY

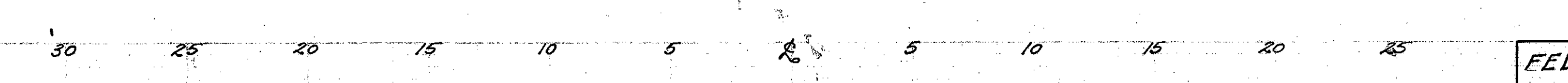


CULVERT No. 3
STA. 77+0

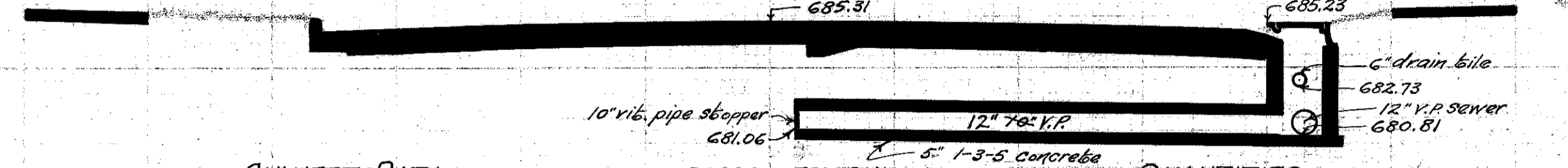
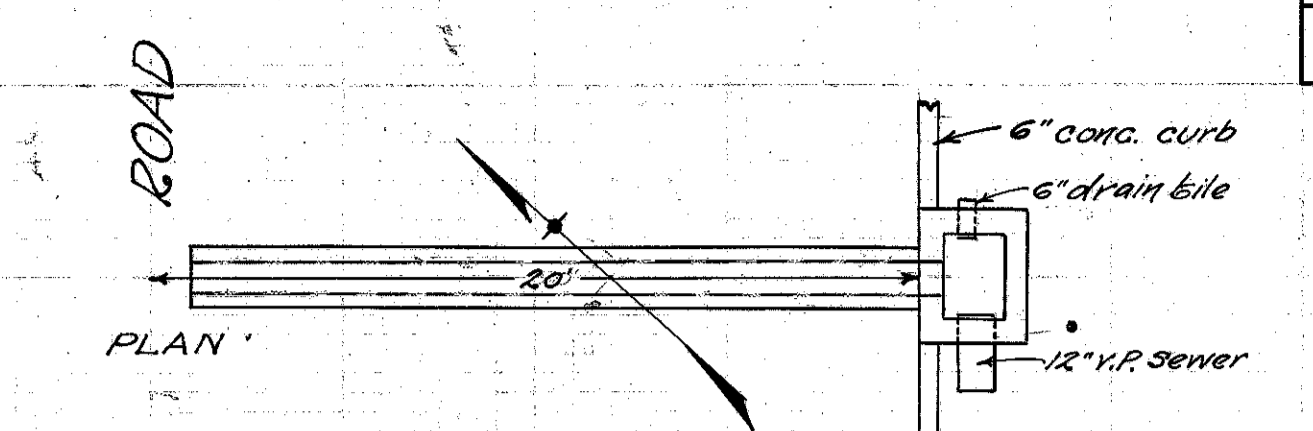


CULVERT DATA
Build std. Inlet basin 21.5' to R. of & and build 12" enc. vit. pipe culvert 60 L. of I.B. to a point 1' to R. of &. Leave 12" vit. pipe stopper in L. end of pipe. Leave 6" drain tile connection thru west wall of Inlet basin. Checked 7-18-27 J.A. Breen

QUANTITIES
7.3 cu. yds. excavation
2.05 + .92 cu. yds. 1-8" concrete
20 lin. ft. 12" vit. pipe
1 12" vit. pipe stopper
1 std. Inlet basin



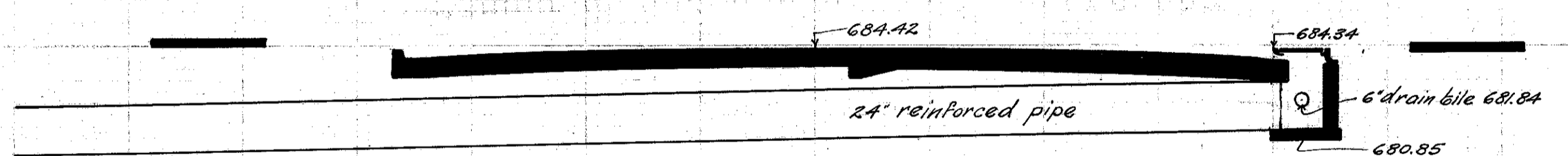
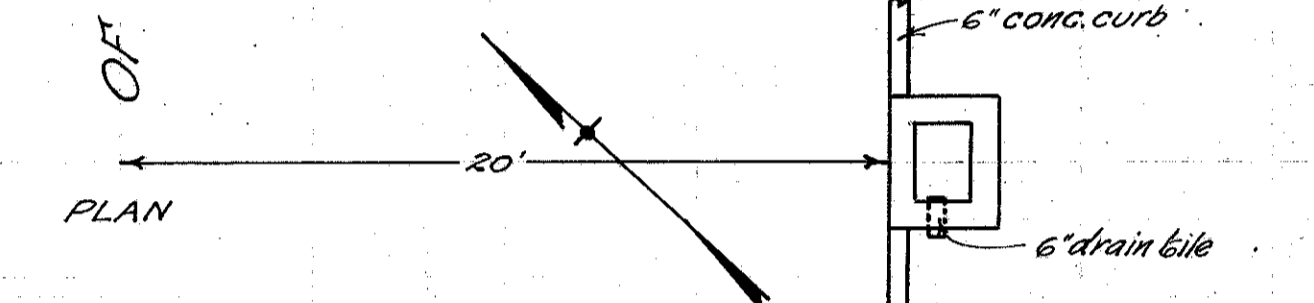
CULVERT No. 7
STA. 92+75



CULVERT DATA
Build std. Inlet basin 21.5' to R. of & and build 12" enc. vit. pipe culvert 60 L. of I.B. to a point 1' to R. of &. Leave 12" vit. pipe stopper in L. end of pipe. Leave 6" drain tile connection thru east wall of Inlet basin. Checked 7-18-27 J.A. Breen

QUANTITIES
7.3 cu. yds. excavation
2.05 + .92 cu. yds. 1-8" concrete
20 lin. ft. 12" vit. pipe
1 12" vit. pipe stopper
1 std. Inlet basin

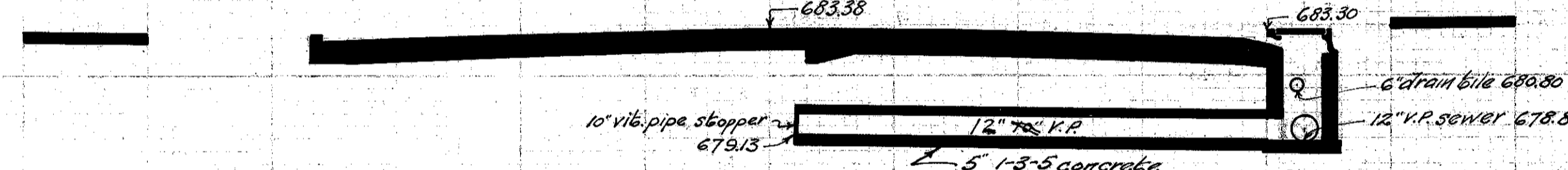
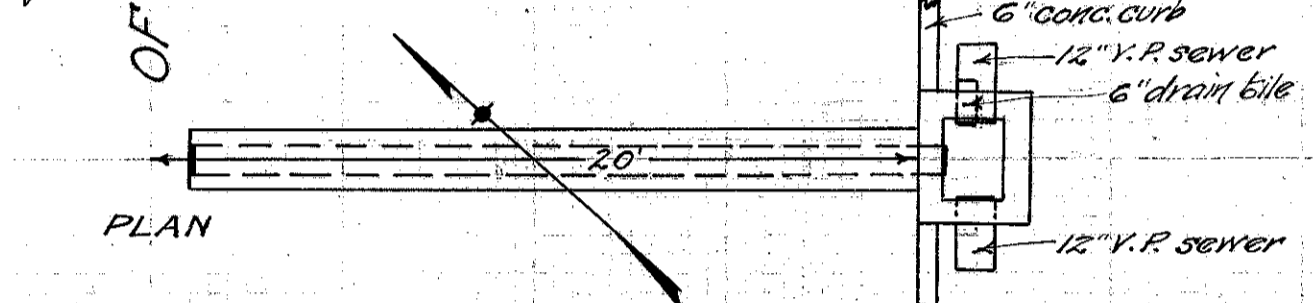
CULVERT No. 2
STA. 73+37



CULVERT DATA
Build std. Inlet basin 21.5' to R. of & and over present culvert. Put 6" drain tile connection thru west wall. Checked 7-18-27 J.A. Breen

QUANTITIES
1.8 cu. yds. excavation
1 std. Inlet basin

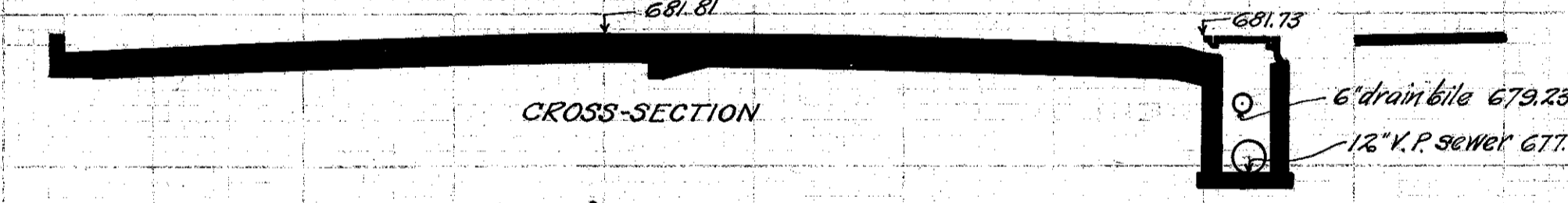
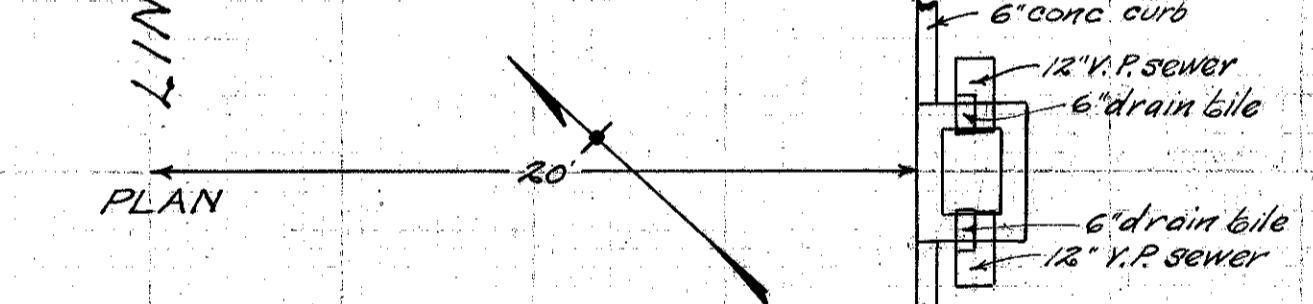
CULVERT No. 6
STA. 87+92



CULVERT DATA
Build std. Inlet basin 21.5' to R. of & and build 12" enc. vit. pipe culvert 60 L. of I.B. to a point 1' to R. of &. Leave 12" vit. pipe stopper in L. end of pipe. Leave 6" drain tile connection thru east wall of Inlet basin. Checked 7-18-27 J.A. Breen

QUANTITIES
7.3 cu. yds. excavation
2.05 + .92 cu. yds. 1-8" concrete
20 lin. ft. 12" vit. pipe
1 12" vit. pipe stopper
1 std. Inlet basin

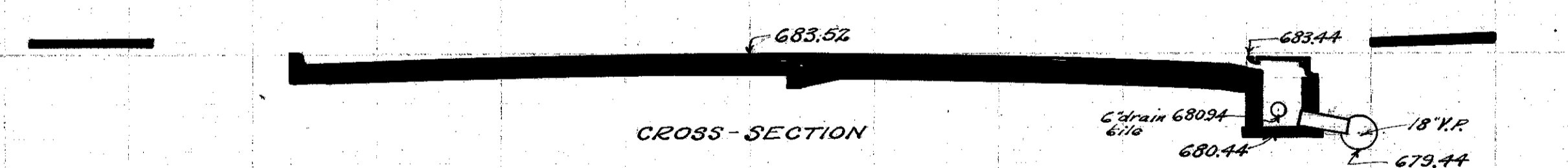
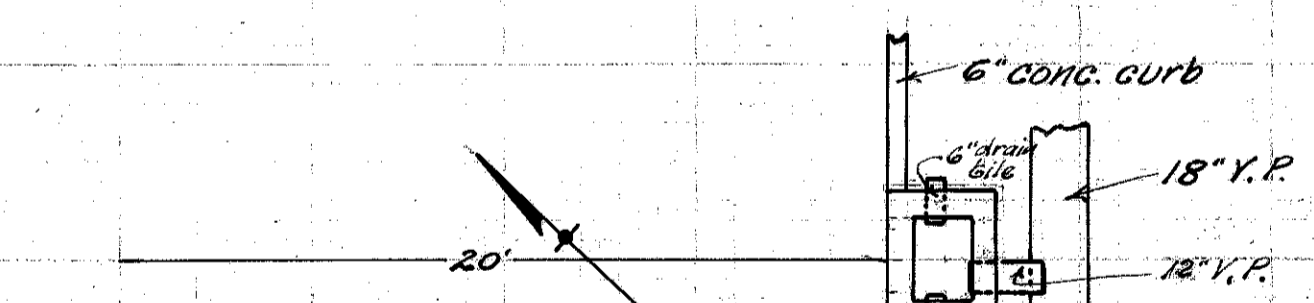
CULVERT No. 5
STA. 84+0



CULVERT DATA
Build std. Inlet basin 21.5' to R. of &. Leave 6" drain tile connections thru east and west walls of Inlet basin. Checked 7-18-27 J.A. Breen

QUANTITIES
2.2 cu. yds. excavation
1 std. Inlet basin

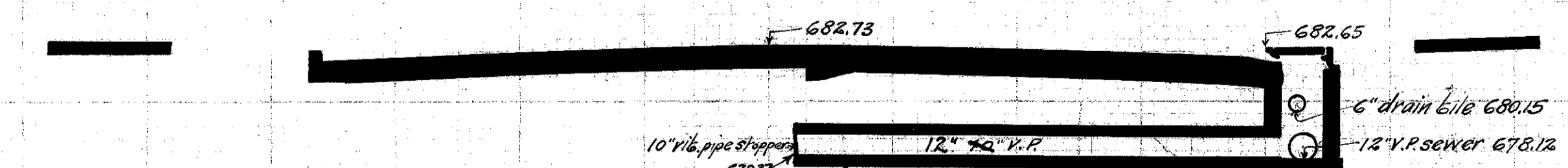
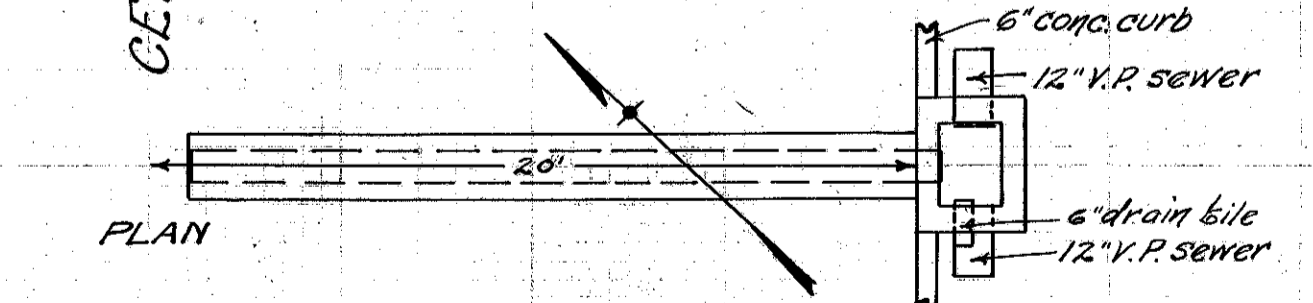
CULVERT No. 1
STA. 66+0



CULVERT DATA
Build std. Inlet basin 21.5' to R. of & and connect to present 18" sewer with 2' of 12" vit. pipe. Leave 6" drain tile connection thru east and west wall of Inlet basin. Checked 7-18-27 J.A. Breen

QUANTITIES
1.8 cu. yds. excavation
2 lin. ft. 12" vit. pipe
1 std. Inlet basin

CULVERT No. 4
STA. 80+50



CULVERT DATA
Build std. Inlet basin 21.5' to R. of & and build 12" enc. vit. pipe culvert 60 L. of I.B. to a point 1' to R. of &. Leave 12" vit. pipe stopper in L. end of pipe. Leave 6" drain tile connection thru west wall of Inlet basin. Checked 7-18-27 J.A. Breen

QUANTITIES
7.4 cu. yds. excavation
2.05 + .92 cu. yds. 1-8" concrete
20 lin. ft. 12" vit. pipe
1 12" vit. pipe stopper
1 std. Inlet basin