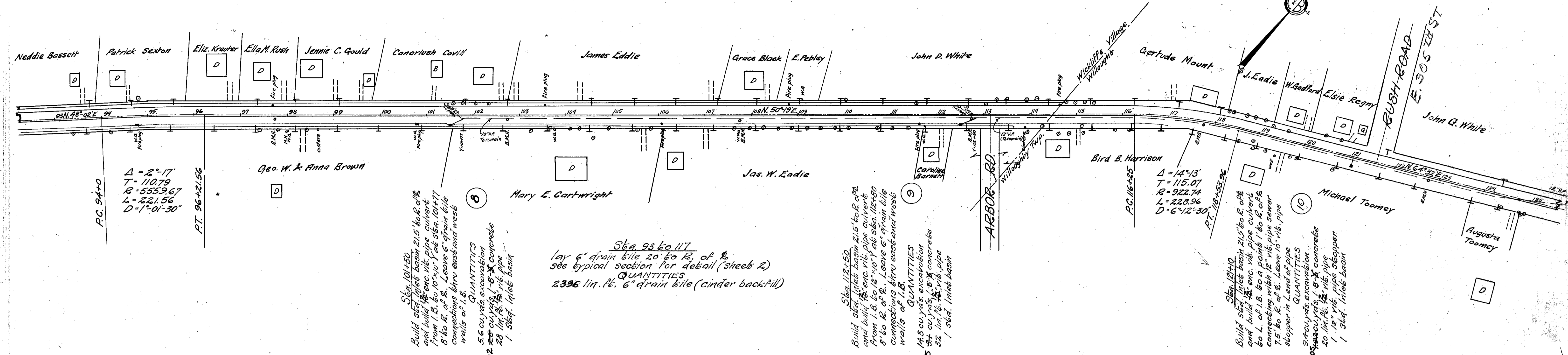


I.C.H. N^o 2 SEC. 1 & B
LAKE COUNTY



B.M.*7 Sta. 94+20
Spike in back of 6" elm
31' to R. of C
Elev. = 685.95

B.M.*8 Sta. 99+25
Spike in side 12" M.
54' to R. of C
Elev. = 687.31

B.M.*9 Sta. 104+29
Spike in side 8" M.
30' to R. of C
Elev. = 687.20

B.M.*10 Sta. 108+87
Spike in side 18" M.
29' to R. of C
Elev. = 686.47

B.M.*11 Sta. 113+96
Spike in roof 36" M.
38' to R. of C
Elev. = 688.48

B.M.*12 Sta. 119+26
Spike in roof of 10" calalpa
20' to L of C
Elev. = 686.25

Note: - Grade line shown is crown of old pav't.

