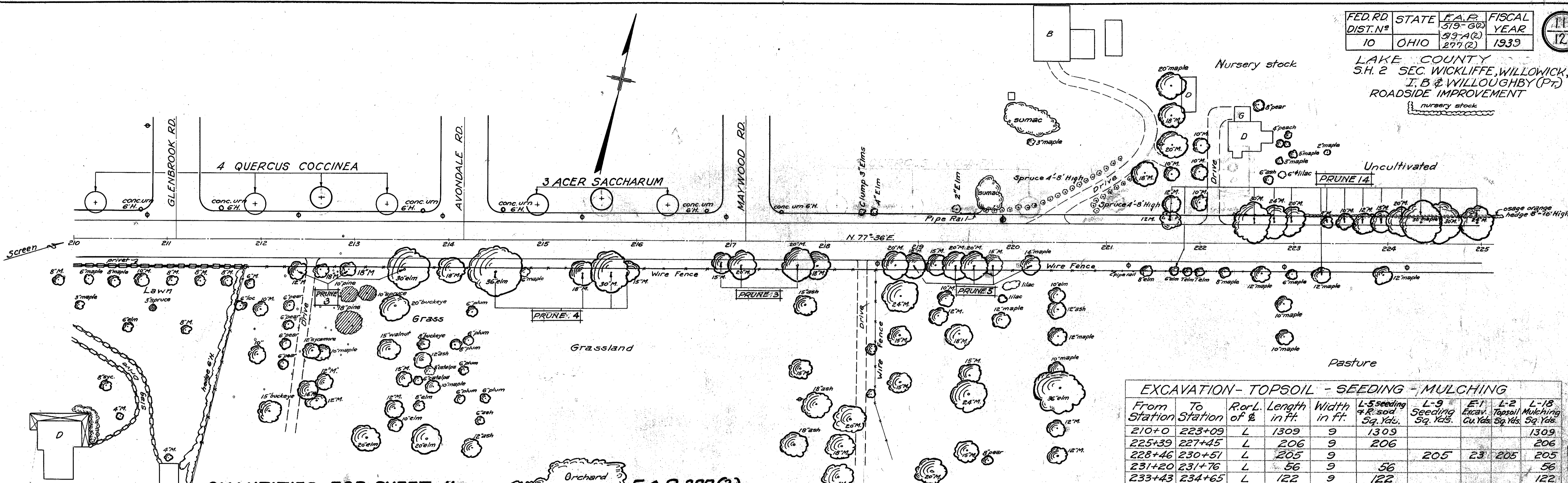


LAKE COUNTY
S.H. 2 SEC. WICKLIFFE, WILLOWICK,
I. B. & WILLOUGHBY (P)
ROADSIDE IMPROVEMENT

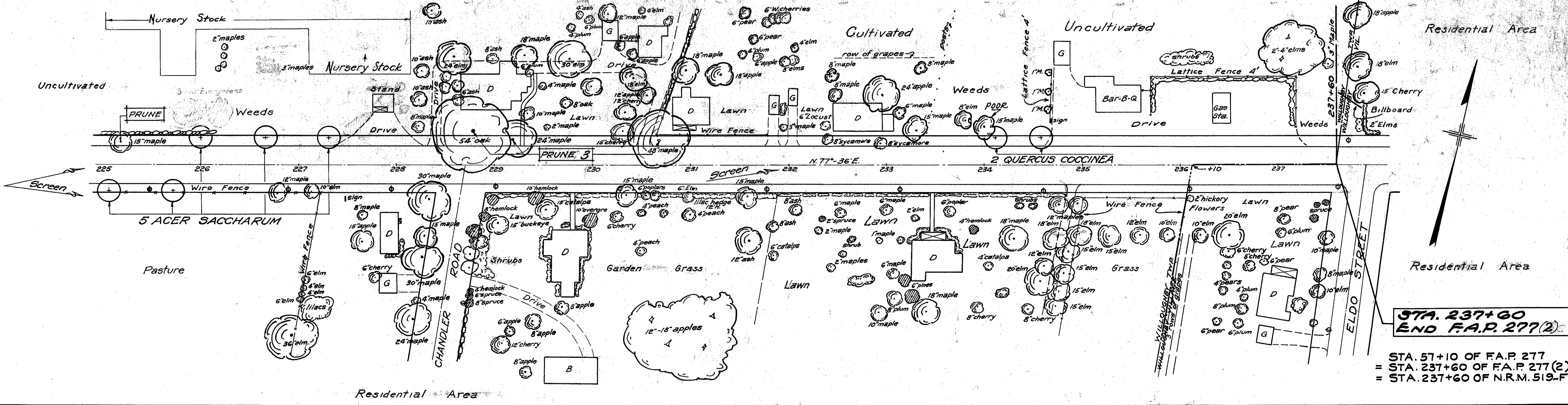


QUANTITIES FOR SHEET II

Item	Quantity	Unit	Materials & Operations	Item	Quantity	Unit	Materials & Operations
L-14	6	Each	Quercus coccinea (Scarlet oak) 1 1/2" to 1 3/4" cal.	L-18	2657	Sq. Yds.	Straw Mulch (including stabilizing)
L-14	8	Each	Acer saccharum (Sugar maple) 1 1/2" to 1 3/4" cal.	L-9	72	Lbs.	Commercial fertilizer #1, @ 20 lbs. per 1000 sq. ft.
E-1	44	Cu. Yds.	Roadway excavation (unclassified)	L-9	149	Lbs.	Commercial fertilizer #2, @ 10 lbs. per 1000 sq. ft.
L-9	399	Sq. Yds.	Seeding	L-17	2	Each	Pruning existing trees 6 inch caliper
L-5	1638	Sq. Yds.	Seeding & renovating existing sod	L-17	12	Each	Pruning existing trees 12 inch caliper
L-2	399	Sq. Yds.	Topsoil furnished & placed. (Seeded under L-9)	L-17	6	Each	Pruning existing trees 30 inch caliper
				L-17	3	Each	Pruning existing trees 36 inch caliper

EXCAVATION - TOPSOIL - SEEDING - MULCHING

From Station	To Station	Ror L.	Length in ft.	Width in ft.	L-5 Seeding + R'sod Sq. Yds.	L-9 Seeding Sq. Yds.	E-1 Excav. Cu. Yds.	L-2 Topsoil Sq. Yds.	L-18 Mulching Sq. Yds.
210+0	223+09	L	1309	9	1309				1309
225+39	227+45	L	206	9	206				206
228+46	230+51	L	205	9		205	23	205	205
231+20	231+76	L	56	9	56				56
233+43	234+65	L	122	9	122				122
227+22	228+40	R	118	9	118				118
228+90	231+90	R	300	6		200	22	200	200
Totals					1811	405	45	405	2216
Deduct for side app. & drives in above stations					133	6	1	6	119
TOTALS FOR SHEET					1638	399	44	399	2037



**STA. 237+60
END F.A.P. 277(2)**

STA. 57+10 OF F.A.P. 277
= STA. 237+60 OF F.A.P. 277(2)
= STA. 237+60 OF N.R.M. 519-F