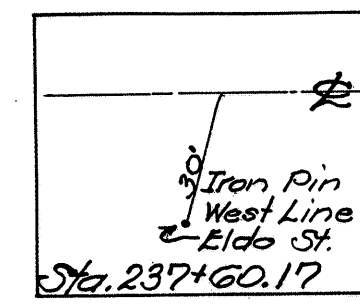
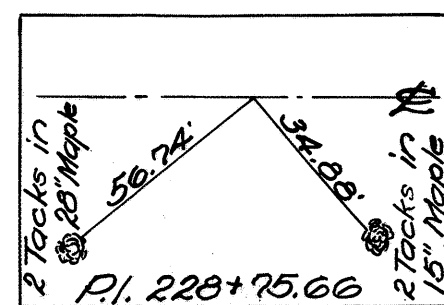


**SUMMARY OF MANHOLE CASTINGS RAISED TO GRADE (M.H.)**

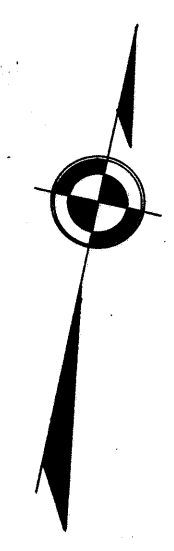
Item No.	Station	Dist. Ror L.
M.H. 1	223+62	11' R
M.H. 2	228+97	14' R
M.H. 3	233+98	14' R
<b>TOTAL</b>	<b>3</b>	<b>277 RE</b>

**SUMMARY OF BASIN CASTINGS RAISED TO GRADE (I.B.)**

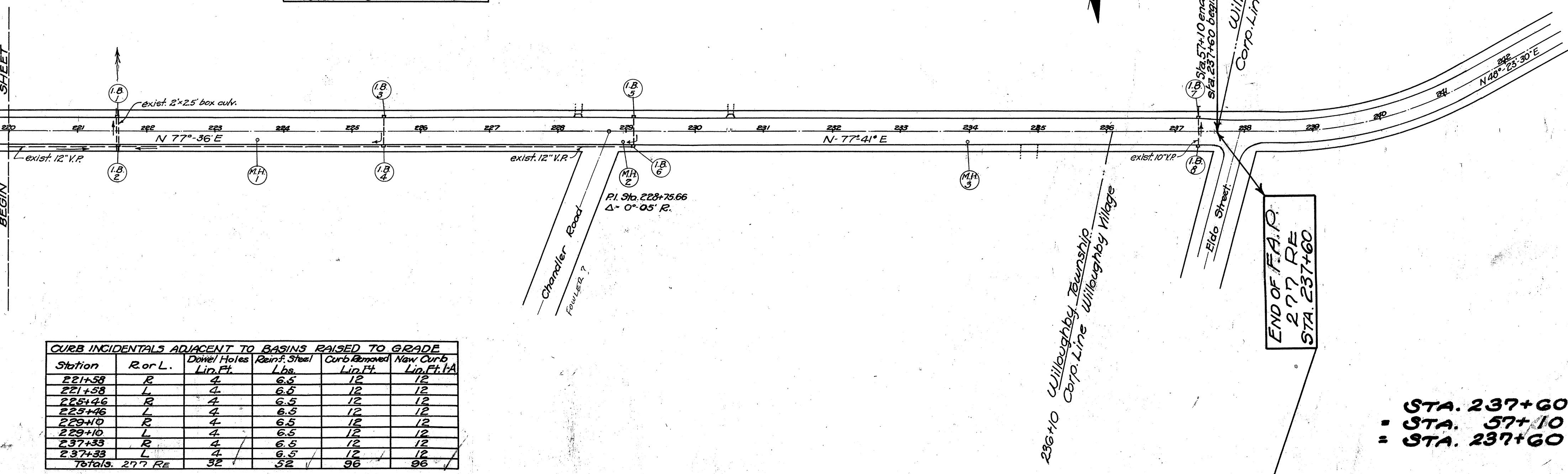
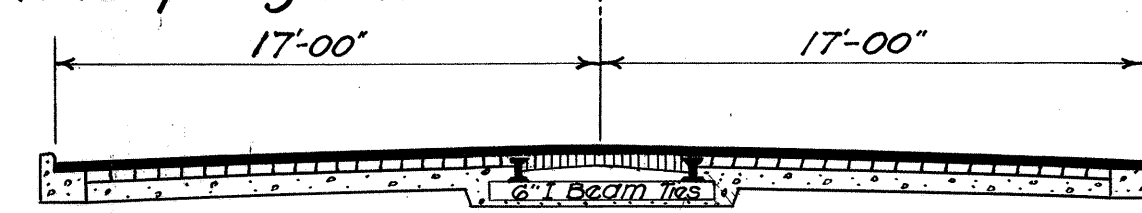
Item No.	Station	Dist. Ror L.
I.B. 1	221+58	20' L
I.B. 2	221+58	20' R
I.B. 3	225+46	20' L
I.B. 4	225+46	20' R
I.B. 5	229+10	20' L
I.B. 6	229+10	20' R
I.B. 7	237+33	20' L
I.B. 8	237+33	20' R
<b>TOTAL</b>	<b>8</b>	<b>277 RE</b>



**F.A. 277 RE**



Note:- Marker to be furnished and erected on the left by the State before acceptance of this project.



**CURB INCIDENTALS ADJACENT TO BASINS RAISED TO GRADE**

Station	Ror L.	Dowel Holes Lid Ft.	Rein. Steel Lbs.	Curb Removed Lid Ft.	New Curb Lid Ft.
221+58	R	4	6.5	12	12
221+58	L	4	6.5	12	12
225+46	R	4	6.5	12	12
225+46	L	4	6.5	12	12
229+10	R	4	6.5	12	12
229+10	L	4	6.5	12	12
237+33	R	4	6.5	12	12
237+33	L	4	6.5	12	12
<b>Totals. 277 RE</b>		<b>32</b>	<b>52</b>	<b>96</b>	<b>96</b>

B.M. No. 44 STA. 222+27  
Spike 10' Maple 27' R. of C.  
Elevation 680.16

B.M. No. 45 STA. 227+14  
Spike 12' Elm 27' R. of C.  
Elevation 686.445

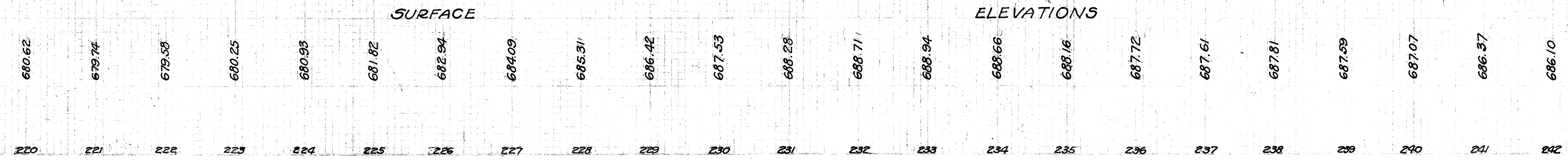
B.M. No. 46 STA. 231+78  
Spike Telephone Pole 24' R. of C.  
Elevation 688.65

B.M. No. 47 STA. 236+35  
"X" Gas Pump Fnd'g. 40' L. of C.  
Elevation 687.13

B.M. No. 48 STA. 240+61  
Scapbolt Fire Hyd. 23' L. of C.  
Elevation 689.095

STA. 237+60 OF F.A.R. 277 RE  
= STA. 57+10 OF F.A.R. 277  
= STA. 237+60 OF N.R.M. 519-F

STA. 237+60  
END F.A.R. 277 RE



SURVEYED BY: [ ]  
 CHECKED BY: [ ]  
 DATE: [ ]  
 SCALE: [ ]  
 SHEET NO.: [ ]