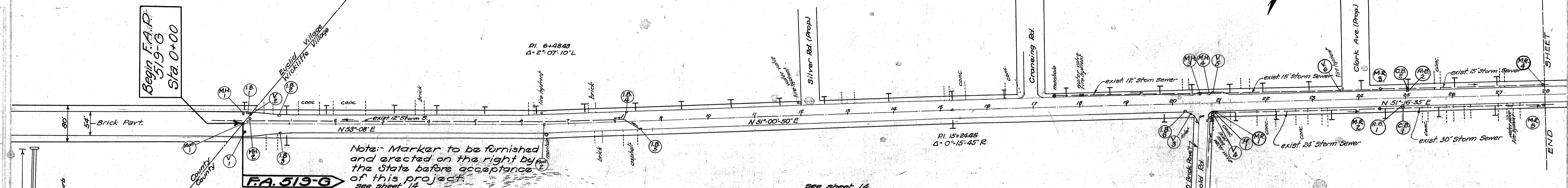
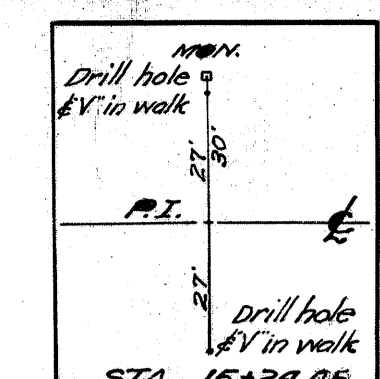
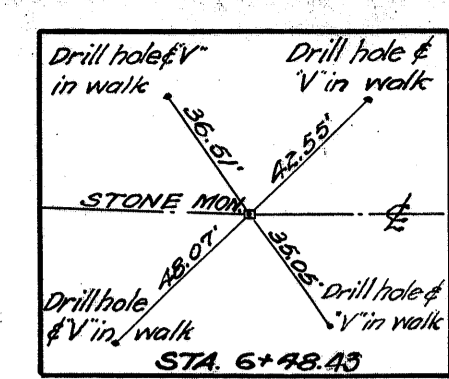
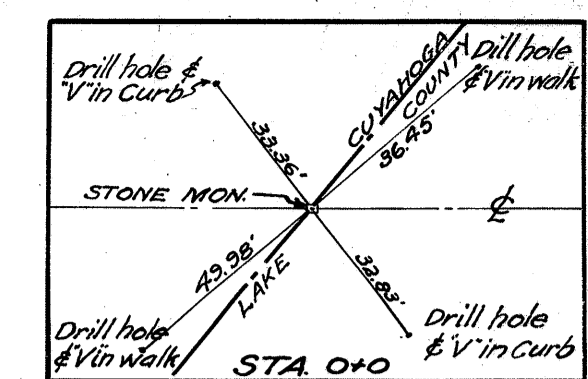


Item No.	Station	Remarks
R.B. 1	24+95	Exist. casting to be used in new C.B.
R.B. 2	25+03	" " " " " " " "
Total 519-G		2



Note: Marker to be furnished and erected on the right by the State before acceptance of this project. see sheet 14.

SUMMARY OF NEW 6"x18" SANDSTONE CURB - Str.

From Station	To Station	L. or R.	Gross Length Lin. Ft.	Additions For Lin. Ft.	Deductions For Lin. Ft.	Net Length Lin. Ft.
19+75	28+0	L	825		70	755
20+63	28+0	R	717			717
Totals 519-G						1472

N.B. See Sheets No. 14 & 15 for Details of Intersections.

SUMMARY OF CONCRETE CURB & GUTTER REMOVED & DISPOSED OF

FROM STATION	TO STATION	L. or R.	GROSS LENGTH LIN. FT.	DEDUCTIONS FOR LIN. FT.	NET LENGTH LIN. FT.
19+75	28+0	L	825	Intersection 70	755
20+48	28+0	R	752	Intersection 17	735
Totals 519-G					1490

N.B. See Sheets No. 14 & 15 for Details of Intersections. +72

MANHOLES REBUILT (M.R.)

Item No.	Station	Dist.	R. or L.
1 M.R.	20+95	31' E	
2 M.R.	24+46	20' E	
3 M.R.	24+47	20' L	
4 M.R.	27+56	20' E	
5 M.R.	27+88	20' E	
TOTAL 519-G-5			

CURB INCIDENTALS ADJACENT TO BASINS RAISED TO GRADE

Station	R. or L.	Curb/Gutter Rem. Lin. Ft.	New 6"x18" Sandstone Curb 50 Yds. @ 10' Lin. Ft.	Concrete CA Curb Lin. Ft.
0+10	L	12	1.82	12
0+79	L	12	1.82	12
0+80	R	12	1.82	12
8+24	L	12	1.82	12
8+56	R	12	1.82	12
20+28	R	12	1.82	12
Totals 519-G		72	10.92	72

+1490

SUMMARY OF CURVED 6"x18" SANDSTONE CURB

Station	R. or L.	For	Lin. Ft.
20+64.75	R	Intersection	16
Total 519-G			16

SUMMARY OF VALVE BOX CASTINGS RAISED TO GRADE (V)

Item No.	Station	Dist.	R. or L.
V-1	0+4	16'	R
V-2	0+20	18'	L
V-3	20+33	20' E	
V-4	20+84	20' R	
V-5	20+88	22' L	
V-6	23+62	20' L	
TOTAL 519-G 6			

SUMMARY OF MANHOLE CASTINGS RAISED TO GRADE (M.H.)

Item No.	Station	Dist.	R. or L.
M.H. - 1	0+1	18' L	
M.H. - 2	0+16	9' L	
M.H. - 3	20+59	19' L	
M.H. - 4	20+81	19' L	
TOTAL 519-G 4			

SUMMARY OF INLET CASTINGS RAISED TO GRADE (I.B.)

Item No.	Station	Dist.	R. or L.
I.B. - 1	0+10	24.5' L	
I.B. - 2	0+79	19' L	
I.B. - 3	0+80	20.5' R	
I.B. - 4	8+24	20' L	
I.B. - 5	8+56	18' R	
I.B. - 6	20+28	18' R	
TOTAL 519-G 6			

SUMMARY OF NEW CATCH-BASINS (C.B.)

Item No.	Station	Dist.	R. or L.	Remarks
C.B. - 1	24+95	20' E		After exist. connection to fit new C.B.
C.B. - 2	25+03	20' L		
Total 519-G		2		

SUMMARY OF FIRE HYDRANTS REMOVED AND RESET (H)

Item No.	Station	Dist.	R. or L.	Remarks
H-1	20+87	20'		Reset hydrant 40' E. of present location.
Total 519-G 1				

SUMMARY OF MONUMENT CASTINGS RAISED TO GRADE (MON)

Item No.	Station	Dist.	R. or L.
Mon. - 1	0+0	4'	
Mon. - 2	6+48.43	4'	
TOTAL 519-G 2			

B.M. No. 1 STA. 1+64
Arab S.W. Cor. Conc. Frnt. Gas Pump 50' to L. & Elev. 691.045

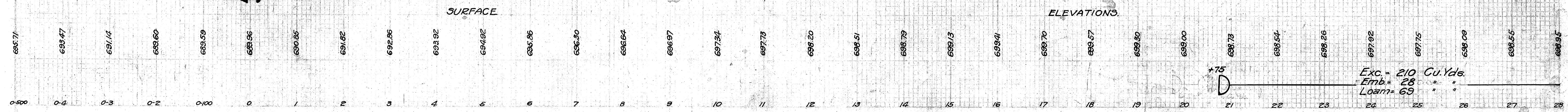
B.M. No. 2 STA. 5+00
X (Cross) in Conc. Sidewalk 26' to R. & Elev. 695.287

B.M. No. 3 STA. 9+28
U.S.G. Bench 21' to R. & Elev. 697.767

B.M. No. 4 STA. 16+75
S.W. Cor. Conc. Pillar W/ Craining Rd. 35' to L. & Elev. 700.464

B.M. No. 5 STA. 21+51
X (Cross) N.E. Cor. Conc. Frnt. Gas Pump 35' to R. & Elev. 702.281

B.M. No. 6 STA. 26+57
X (Cross) in S.E. Cor. Stonewall 30' to L. & Elev. 695.709



Exc. = 210 Cu. Yds.
Emb. = 28 " "
Loam = 69 " "