

REINFORCING SCHEDULE

ABUTMENT NO.1 LT. AND ABUTMENT NO.2 RT.: PHASE I

MARK	NUMBER REQUIRED	LENGTH ft in	WEIGHT (lbs.)	TYPE	DIM A	DIM B	DIM C	DIM D	INCREMENT		
					ft in	ft in	ft in	ft in	ft	in	
A 401	28	9 2	172	6	1 9	2 7					
A 501	58	11 1	670	6	2 8	2 7					
A 502	16	12 11	216	5	2 2	5 6					
A 503	42	9 5	412	5	2 2	3 9					
* A 504	12	39 10	498	STR							
A 506	2 SER. 8 BARS	11 11 13 5	212	5	2 2 2 2	5 0 5 9			0 2 9 / 16		
A 507	20	11 0	230	STR							
A 601	56	10 9	904	SPEC							
* A 801	16	39 10	1702	STR							
TOTAL WEIGHT:			5016								

ABUTMENT NO.1 LT. AND ABUTMENT NO.2 RT.: PHASE II

MARK	NUMBER REQUIRED	LENGTH ft in	WEIGHT (lbs.)	TYPE	DIM A	DIM B	DIM C	DIM D	INCREMENT		
					ft in	ft in	ft in	ft in	ft	in	
A 401	28	9 2	172	6	1 9	2 7					
A 501	58	11 1	670	6	2 8	2 7					
A 502	12	12 11	162	5	2 2	5 6					
A 503	46	9 5	452	5	2 2	3 9					
* A 504	12	39 10	498	STR							
A 509	2 SER. 6 BARS	3 11 13 11	112	5	2 2 2 2	1 0 6 0			2 0 0 / 0		
A 510	2 SER. 3 BARS	2 9 7 9	32	STR					2 6 0 / 0		
A 511	4	9 9	40	STR							
A 512	4	8 5	36	STR							
A 601	58	10 9	936	SPEC							
* A 801	16	39 10	1701	STR							
TOTAL WEIGHT:			4812								

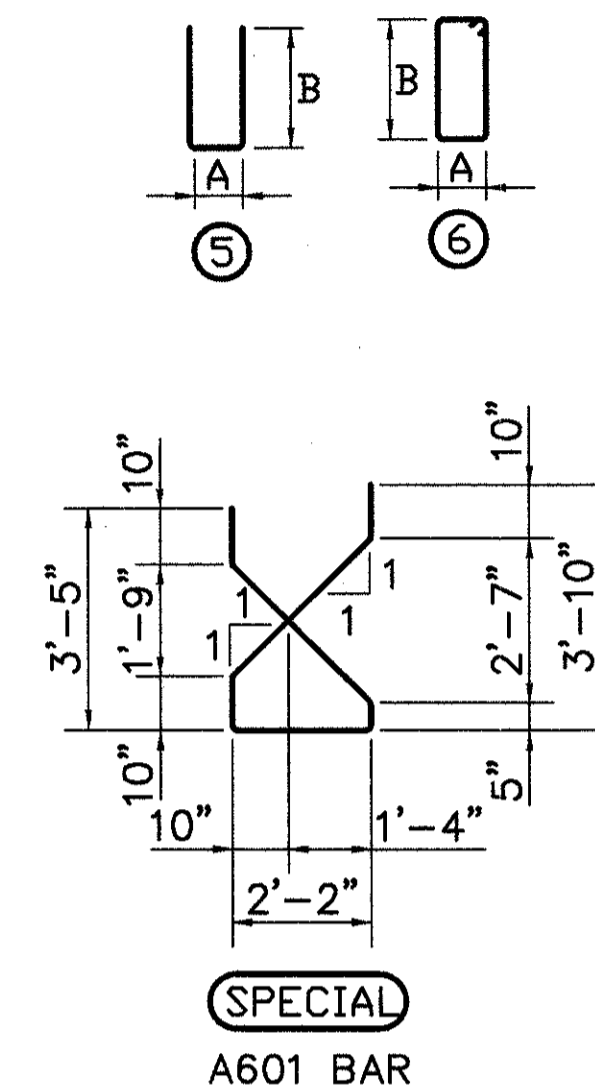
ABUTMENT NO.2 LT. AND ABUTMENT NO.1 RT.: PHASE I

MARK	NUMBER REQUIRED	LENGTH ft in	WEIGHT (lbs.)	TYPE	DIM A	DIM B	DIM C	DIM D	INCREMENT		
					ft in	ft in	ft in	ft in	ft	in	
A 401	28	9 2	172	6	1 9	2 7					
A 501	58	11 1	670	6	2 8	2 7					
A 502	16	12 11	216	5	2 2	5 6					
A 503	42	9 5	412	5	2 2	3 9					
* A 504	12	39 10	498	STR							
A 506	2 SER. 8 BARS	11 11 13 5	212	5	2 2 2 2	5 0 5 9			0 2 9 / 16		
A 507	20	11 0	230	STR							
A 601	56	10 9	904	SPEC							
* A 801	16	39 10	1702	STR							
TOTAL WEIGHT:			5016								

ABUTMENT NO.2 LT. AND ABUTMENT NO.1 RT.: PHASE II

MARK	NUMBER REQUIRED	LENGTH ft in	WEIGHT (lbs.)	TYPE	DIM A	DIM B	DIM C	DIM D	INCREMENT		
					ft in	ft in	ft in	ft in	ft	in	
A 401	28	9 2	172	6	1 9	2 7					
A 501	58	11 1	670	6	2 8	2 7					
A 502	12	12 11	162	5	2 2	5 6					
A 503	46	9 5	452	5	2 2	3 9					
* A 504	12	39 10	498	STR							
A 513	2 SER. 6 BARS	3 11 13 5	108	5	2 2 2 2	1 0 5 9			1 10 13 / 16		
A 514	2 SER. 3 BARS	2 6 7 7	32	STR					2 6 1 / 2		
A 515	4	9 6	40	STR							
A 516	4	8 3	34	STR							
A 601	58	10 9	936	SPEC							
* A 801	16	39 10	1702	STR							
TOTAL WEIGHT:			4806								

BENDING DIAGRAMS



NOTES:

* INDICATES BAR WITH MECHANICAL SPLICE.

ALL REINFORCING STEEL SHALL BE GRADE 60, EPOXY COATED.

REINFORCING STEEL SAMPLES:
REFER TO SECTIONS 106.03, 700, 709.01 THROUGH 709.05 AND 709.08. SUFFICIENT ADDITIONAL REINFORCING STEEL SHALL BE PROVIDED FOR SAMPLES. RANDOM SAMPLES SHALL BE REPLACED IN THE STRUCTURE BY THE ADDITIONAL STEEL, SPLICED IN ACCORDANCE WITH 509.08.
BAR MARKS FOR ALL ABUTMENT No. 1 AND ABUTMENT No. 2 REINFORCING SHALL BE PREFIXED WITH THE DESIGNATION '1A' AND '2A', RESPECTIVELY.