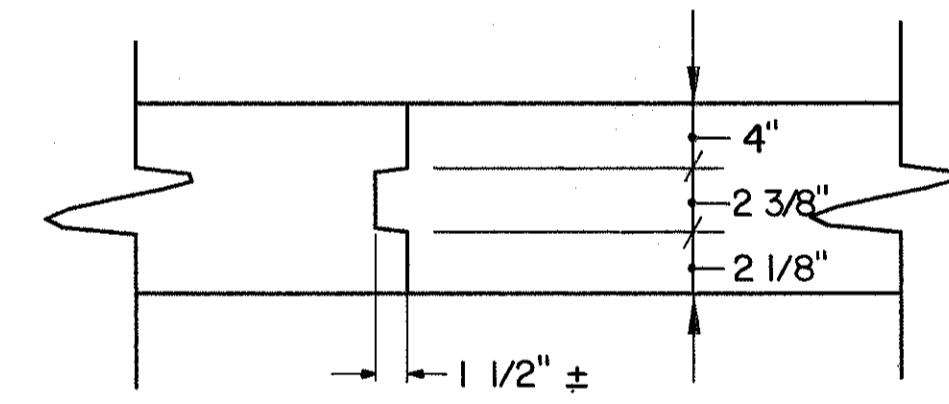


**TRANSVERSE SECTION**

LEFT STRUCTURE SHOWN  
RIGHT STRUCTURE SIMILAR



**SHEAR KEY DETAIL**

**NOTES:**

WELDED ATTACHMENTS OF SUPPORTS FOR CONCRETE DECK FINISHING MACHINE MAY BE MADE TO AREAS OF THE FASCIA STRINGER FLANGES DESIGNATED "COMPRESSION". ATTACHMENTS SHALL NOT BE MADE TO AREAS DESIGNATED "TENSION". FILLET WELDS TO COMPRESSION FLANGES SHALL BE NOT CLOSER THAN 1" FROM EDGE OF FLANGE, BE NOT MORE THAN 2" LONG AND BE NOT SMALLER THAN THE MINIMUM SIZE REQUIRED BY AASHTO.

DECK SLAB DEPTH: THE DISTANCE SHOWN FROM THE TOP OF DECK SLAB TO THE TOP OF THE STEEL BEAM IS THE THEORETICAL DESIGN DIMENSION. THE QUANTITY OF DECK CONCRETE TO BE PAID FOR SHALL BE BASED ON THIS DIMENSION, EVEN THOUGH DEVIATION FROM IT MAY BE NECESSARY BECAUSE THE TOP FLANGE OF THE BEAM MAY NOT HAVE THE EXACT CAMBER OR CONFORMATION REQUIRED TO PLACE IT PARALLEL TO THE FINISHED GRADE.

ERECTION BOLTS: THE HOLE DIAMETER IN THE CROSS FRAMES AND GIRDER STIFFENERS SHALL BE 3/16" LARGER THAN THE DIAMETER OF THE ERECTION BOLTS. UNLESS REPLACED BY PERMANENT HIGH STRENGTH BOLTS, ERECTION BOLTS SHALL REMAIN IN PLACE. LOCK WASHERS SHALL BE FURNISHED FOR OTHER THAN FULLY TORQUED HIGH STRENGTH ERECTION BOLTS. BOLTS SHALL BE FURNISHED AS PART OF ITEM 513.

IN LIEU OF ERECTION BOLTS AND AT THE OPTION OF THE CONTRACTOR, ALTERNATIVE MEANS OF TEMPORARY BRACING MAY BE USED SUBJECT TO THE APPROVAL OF THE DIRECTOR(501.06).

A HAUNCH WIDTH OF 9" SHALL BE USED FOR COMPUTING THE QUANTITY OF CONCRETE. HOWEVER, THE HAUNCH WIDTH MAY VARY BETWEEN 6" AND 12".

DRIP GROOVES SHALL TERMINATE 2'-0" FROM FACE OF ABUTMENT.

ALL REINFORCING BAR MARKS IN THE SUPERSTRUCTURE SHALL BE PREFIXED WITH THE LETTER "S".

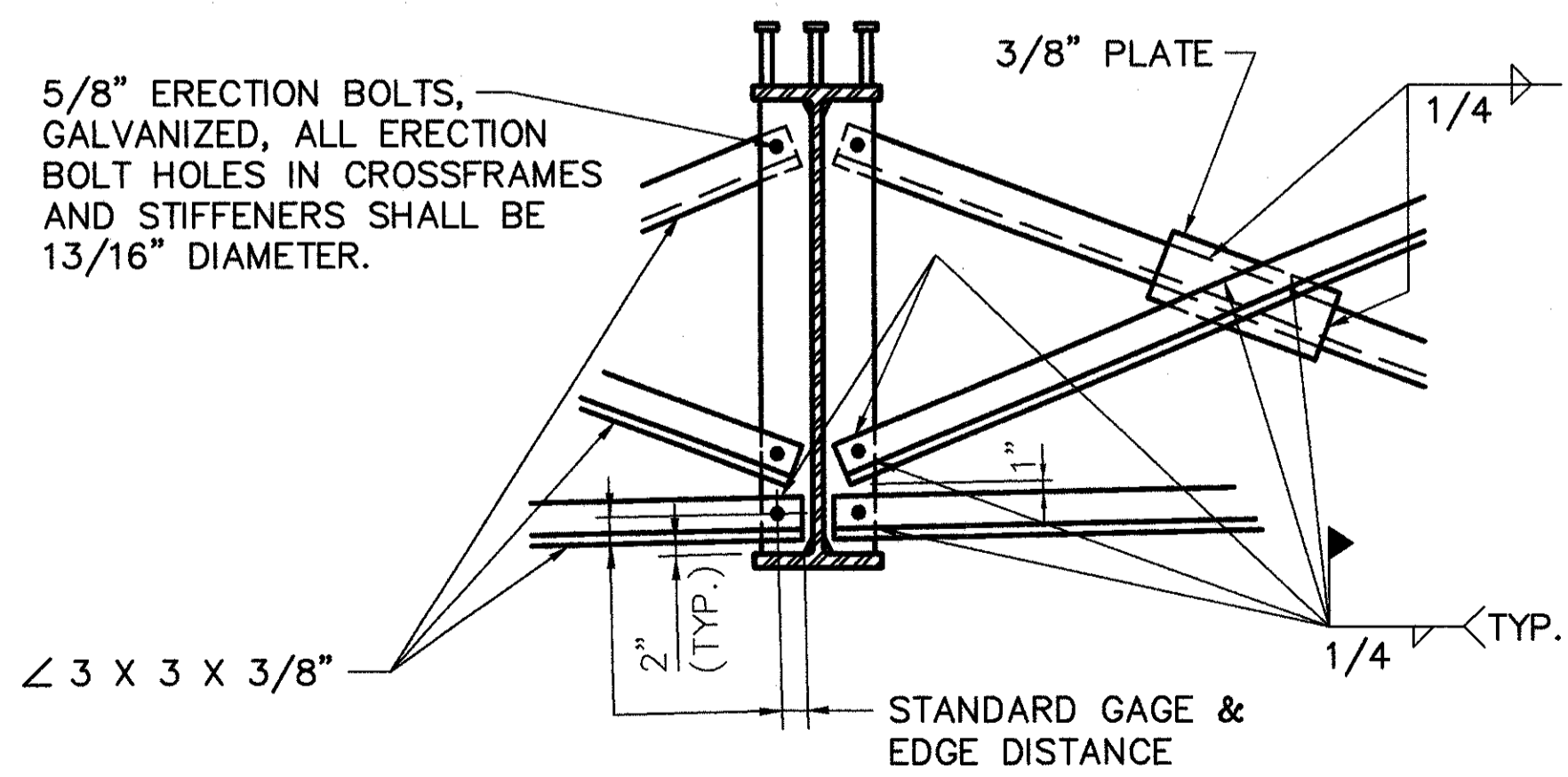
FOR REINFORCING STEEL LIST AND BAR BENDING DIAGRAM, SEE SHEETS 22/24 THRU 24/24.

FOR DECK SCREED ELEVATIONS, SEE SHEET 19/24.

FOR FRAMING PLAN, SEE SHEET 15/24.

FOR SLAB PLAN, SEE SHEET 20/24.

FOR STRUCTURAL GENERAL NOTES, SEE SHEET 3/24.



**CROSSFRAME DETAIL**

DATE	6/94
REVIEWED	A.J.M.
DRAWN	T.M.J.
DESIGNED	M.J.L.
CHECKED	L.P.C.