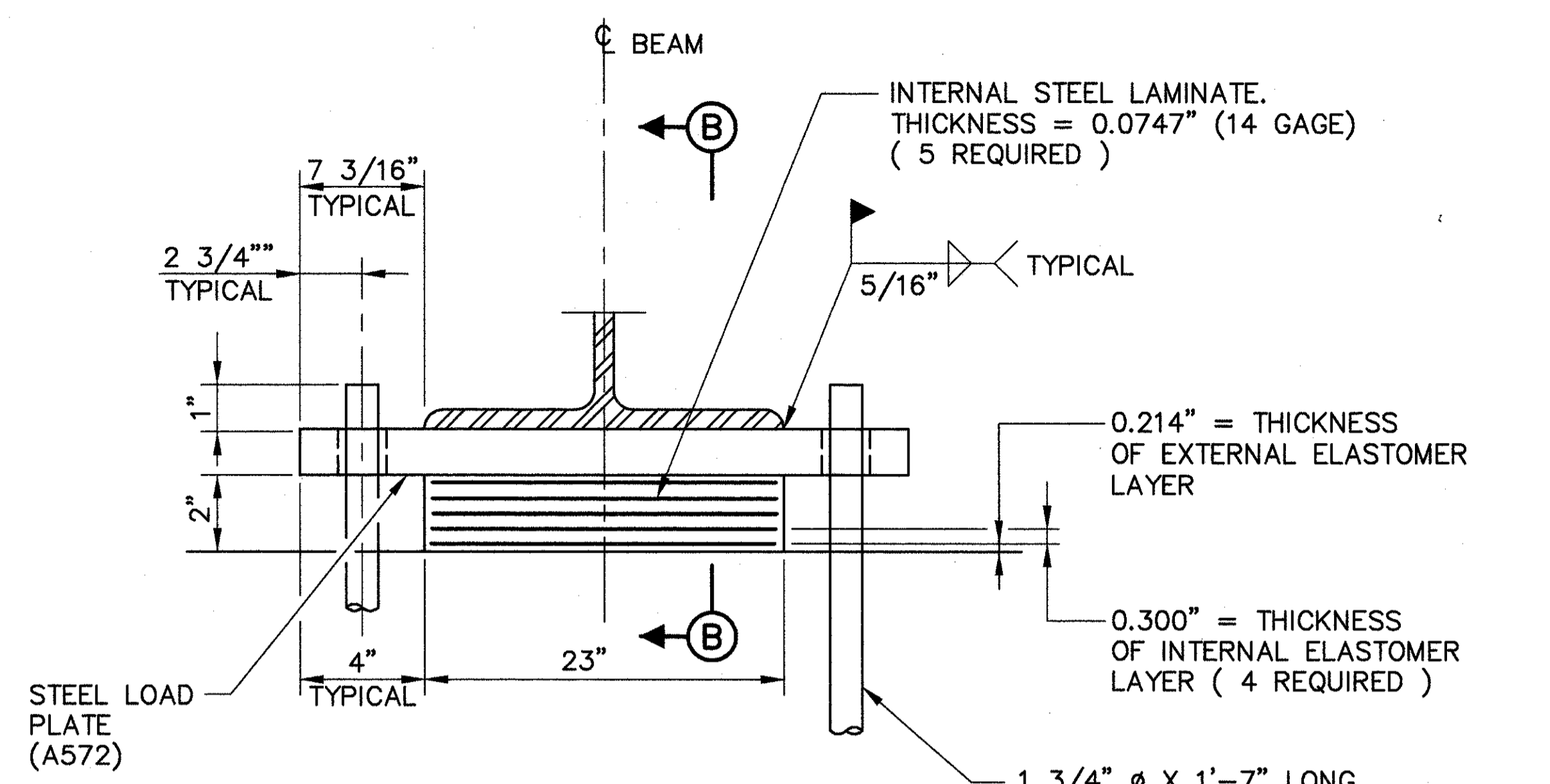


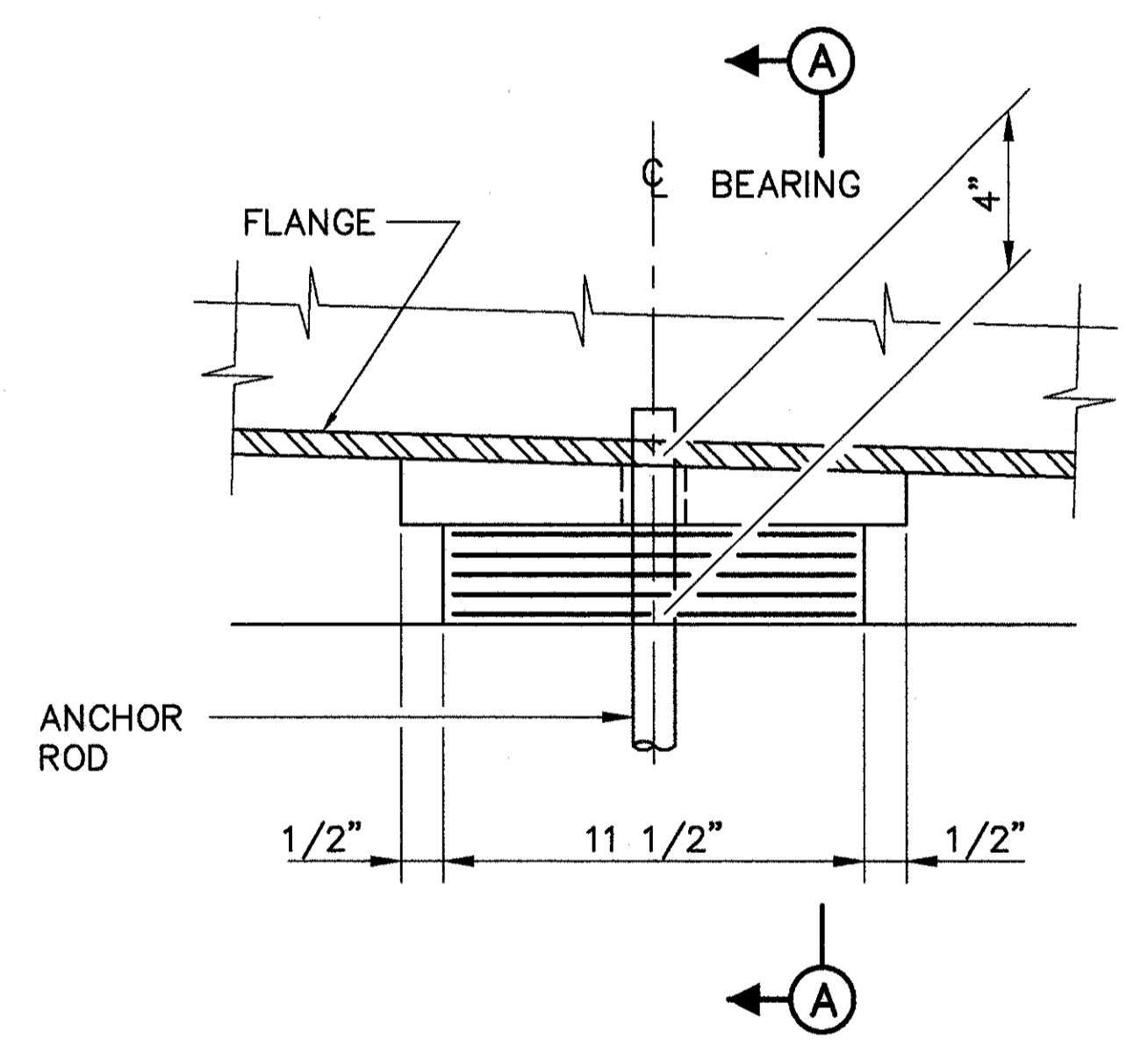
**NOTES:**

- ELASTOMERIC BEARINGS SHALL COMPLY WITH 516 AND ARTICLES 18.2.5 THROUGH 18.2.8 OF SECTION 18, BEARING DEVICES, DIVISION II, CONSTRUCTION, OF THE AASHTO "STANDARD SPECIFICATIONS FOR HIGHWAY BRIDGES". BEARING SHALL BE GRADE 3, 50-DUROMETER ELASTOMER, AND SHALL BE SUBJECT TO THE LOAD TESTING REQUIREMENTS CORRESPONDING TO DESIGN METHOD A. TESTING SHALL BE INCLUDED IN THE PRICE BID FOR THE BEARINGS.
- THE MANUFACTURER SHALL NOT SUPPLY A SAMPLE BEARINGS AS DESCRIBED IN THE "CMS". INSTEAD THE MANUFACTURER SHALL SUPPLY A PLAIN ELASTOMERIC PAD FOR TESTING PURPOSES. THE PAD SHALL BE FURNISHED FROM THE SAME BATCH OF NEOPRENE THAT IS USED IN THE FABRICATION OF THE LAMINATED ELASTOMERIC BEARINGS. THE FABRICATOR SHALL CERTIFY THE IDENTITY OF THE ELASTOMER. THE PAD SHALL HAVE A 1/2 INCH THICKNESS AND A MINIMUM LENGTH AND WIDTH DIMENSION OF 6 INCHES. PAYMENT FOR THE TEST PAD SHALL BE INCLUDED IN THE PRICE BID FOR THE BEARINGS.
- LOAD PLATES: THE STEEL LOAD PLATE SHALL BE THE SAME MATERIAL AS THE ATTACHED STRUCTURAL STEEL AND BE SIMILARLY CLEANED AND COATED. SURFACE PREPARATION AND PRIMING SHALL BE DONE IN THE SHOP AND BE INCLUDED IN THE PRICE BID FOR THE BEARINGS. FIELD COATS SHALL BE INCLUDED IN THE PRICE BID FOR PAINTING MAIN STRUCTURAL STEEL.
- THE STEEL LOAD PLATE SHALL BE BONDED BY VULCANIZATION TO THE ELASTOMER DURING THE MOLDING PROCESS. WELDING OF THE LOAD PLATE TO THE SUPERSTRUCTURE SHALL BE CONTROLLED SO THAT THE PLATE TEMPERATURE AT THE ELASTOMER BONDED SURFACE SHALL NOT EXCEED 300° F AS DETERMINED BY THE USE OF PYROMETRIC STICKS OR OTHER TEMPERATURE MONITORING DEVICES.
- BEARING ANCHOR RODS: AT THE OPTION OF THE CONTRACTOR, THE BEARING ANCHOR RODS (OR FORMED HOLES), LOCATED AND SUPPORTED BY TEMPLATES, MAY BE CAST-IN-PLACE.
- BEARING REPOSITIONING: IF PLACEMENT OF THE DECK CONCRETE IS DONE AT AN AMBIENT TEMPERATURE HIGHER THAN 80° F OR LOWER THAN 40° F AND THE BEARING SHEAR DEFLECTION EXCEEDS 1/6 OF THE BEARING HEIGHT AT 60° F (±) 10° F, THE BEAMS OR GIRDERS SHALL BE RAISED TO ALLOW THE BEARINGS TO RETURN TO THEIR UNDEFORMED SHAPE AT 60° F (±) 10° F.
- BASIS OF PAYMENT: THE UNIT BID PRICE SHALL INCLUDE ALL MATERIALS, LABOR AND INCIDENTALS NECESSARY TO FURNISH AND INSTALL LAMINATED ELASTOMERIC BEARINGS AS DETAILED. PAYMENT WILL BE MADE AT THE CONTRACT PRICE FOR ITEM 516, EACH, LAMINATED ELASTOMERIC BEARING PAD WITH INTERNAL LAMINATES AND LOAD PLATE (NEOPRENE), AS PER PLAN, 2" X 11 1/2" X 23" PAD WITH 2" PLATE.



**SECTION A-A**  
LAMINATED ELASTOMERIC FIXED BEARING

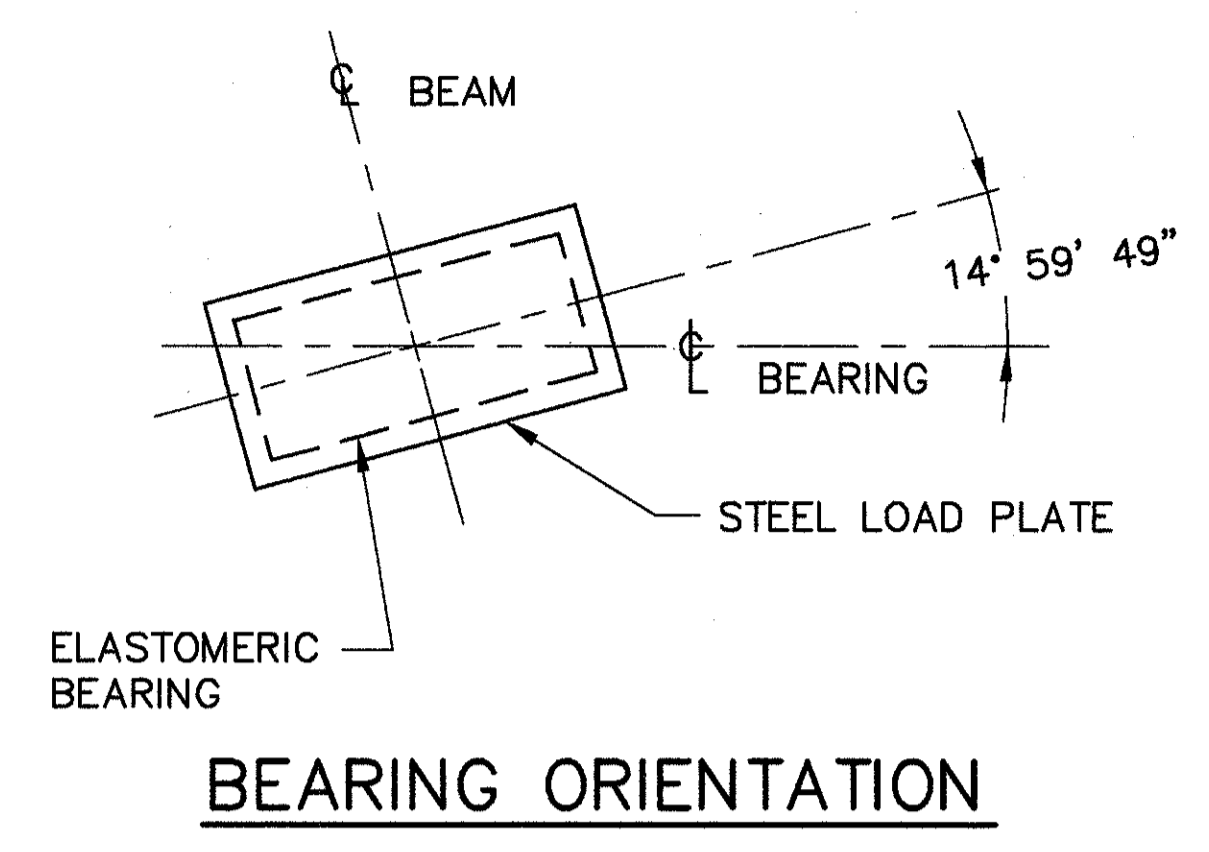
1 3/4"  $\phi$  X 1'-7" LONG ANCHOR ROD GALVANIZED ACCORDING TO 711.02. INSTALL ANCHOR ROD PER 510. INCLUDE DOWEL HOLES AND ANCHOR RODS WITH ITEM 516 FOR PAYMENT. ( TYPICAL )



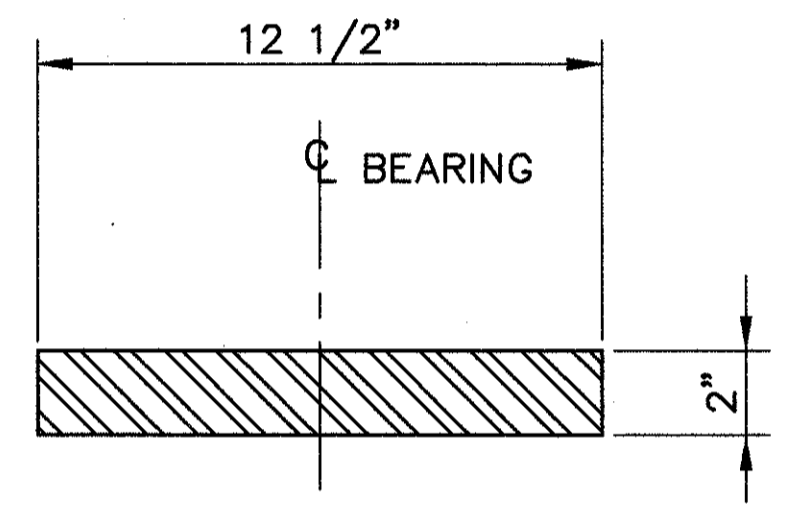
**SECTION B-B**  
LAMINATED ELASTOMERIC FIXED BEARING

**LAMINATED ELASTOMERIC BEARINGS**

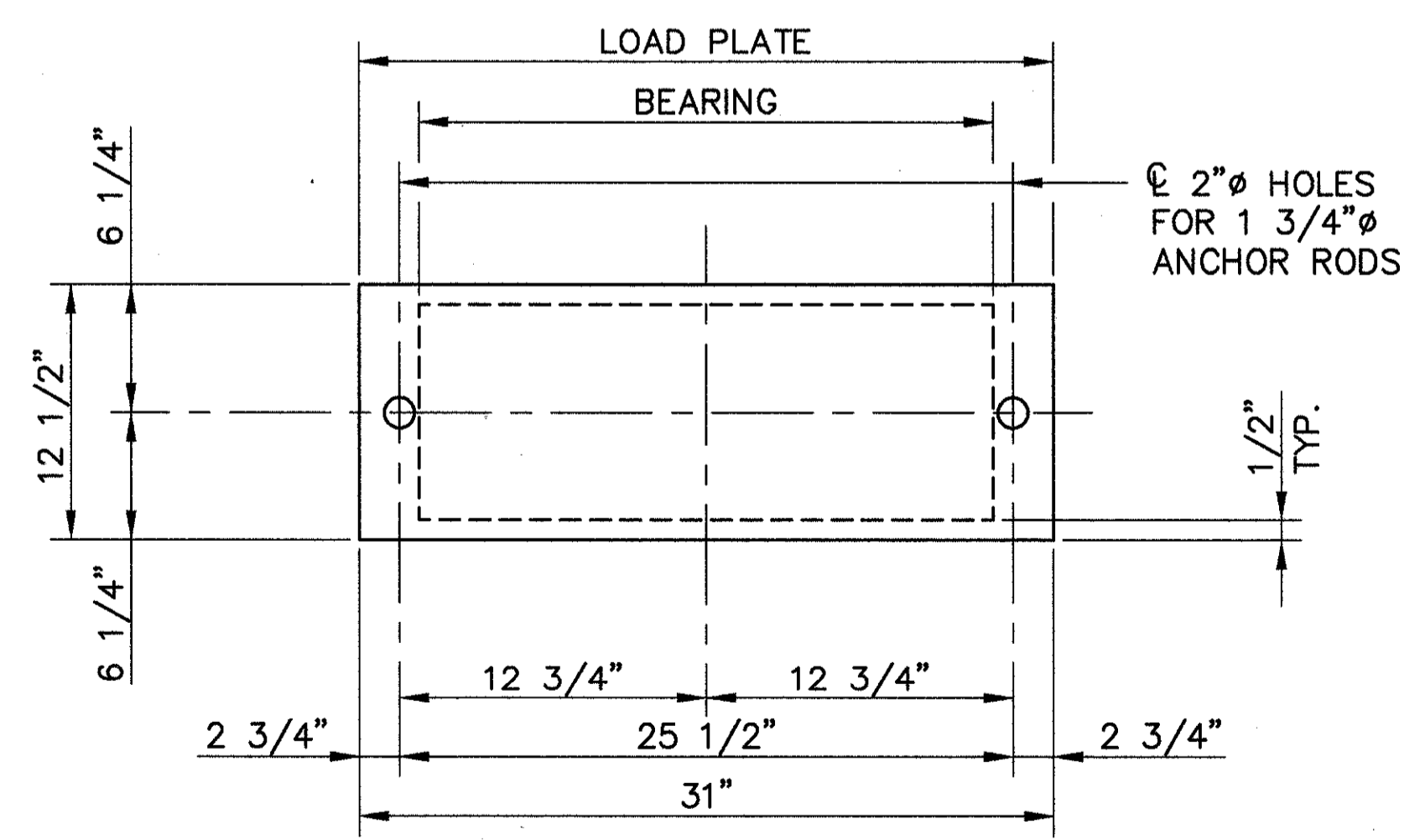
ELASTOMER SHALL BE 50 DUROMETER HARDNESS  
SERVICE LOADS: DL = 186 KIPS  
LL = 66 KIPS  
TOTAL = 252 KIPS



**BEARING ORIENTATION**



**DETAIL "A"**  
STEEL LOAD PLATE



**PLAN VIEW**  
LAMINATED ELASTOMERIC FIXED BEARING