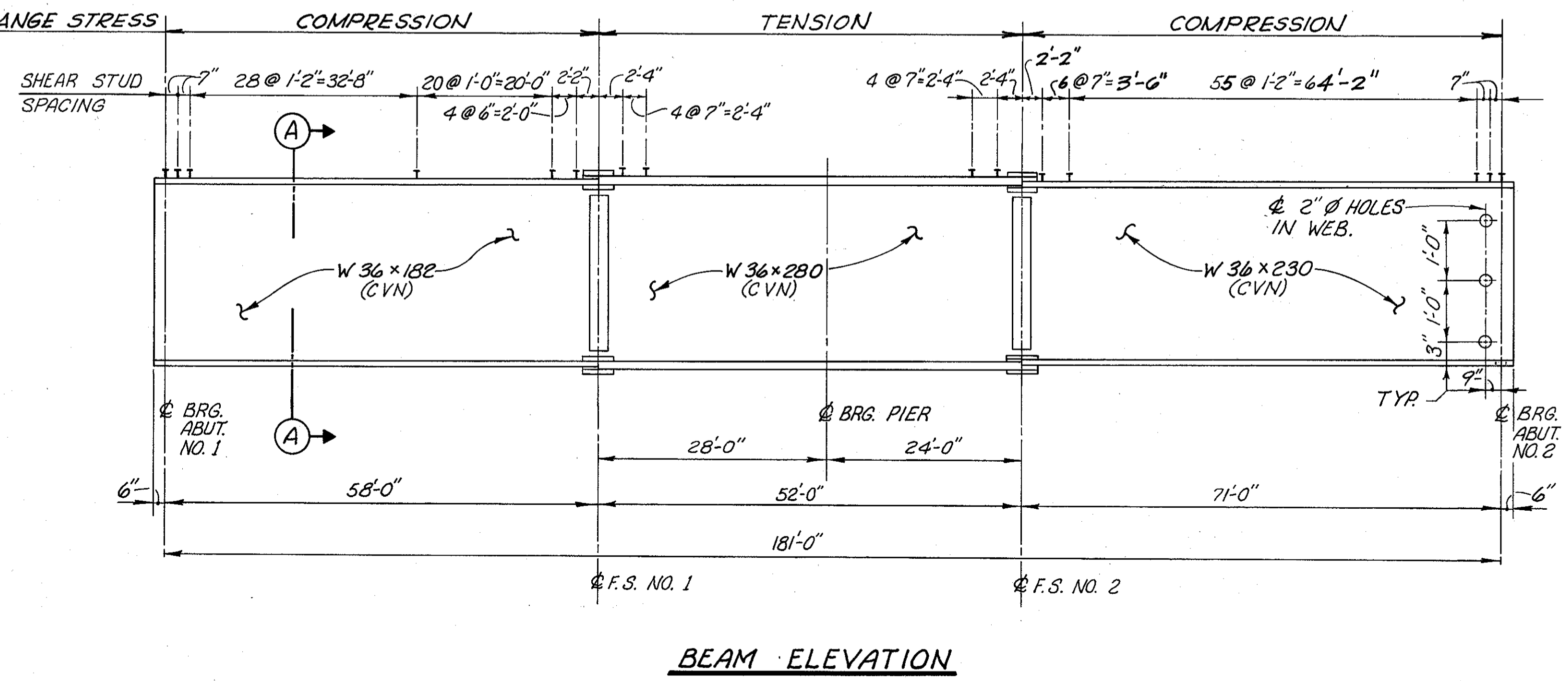
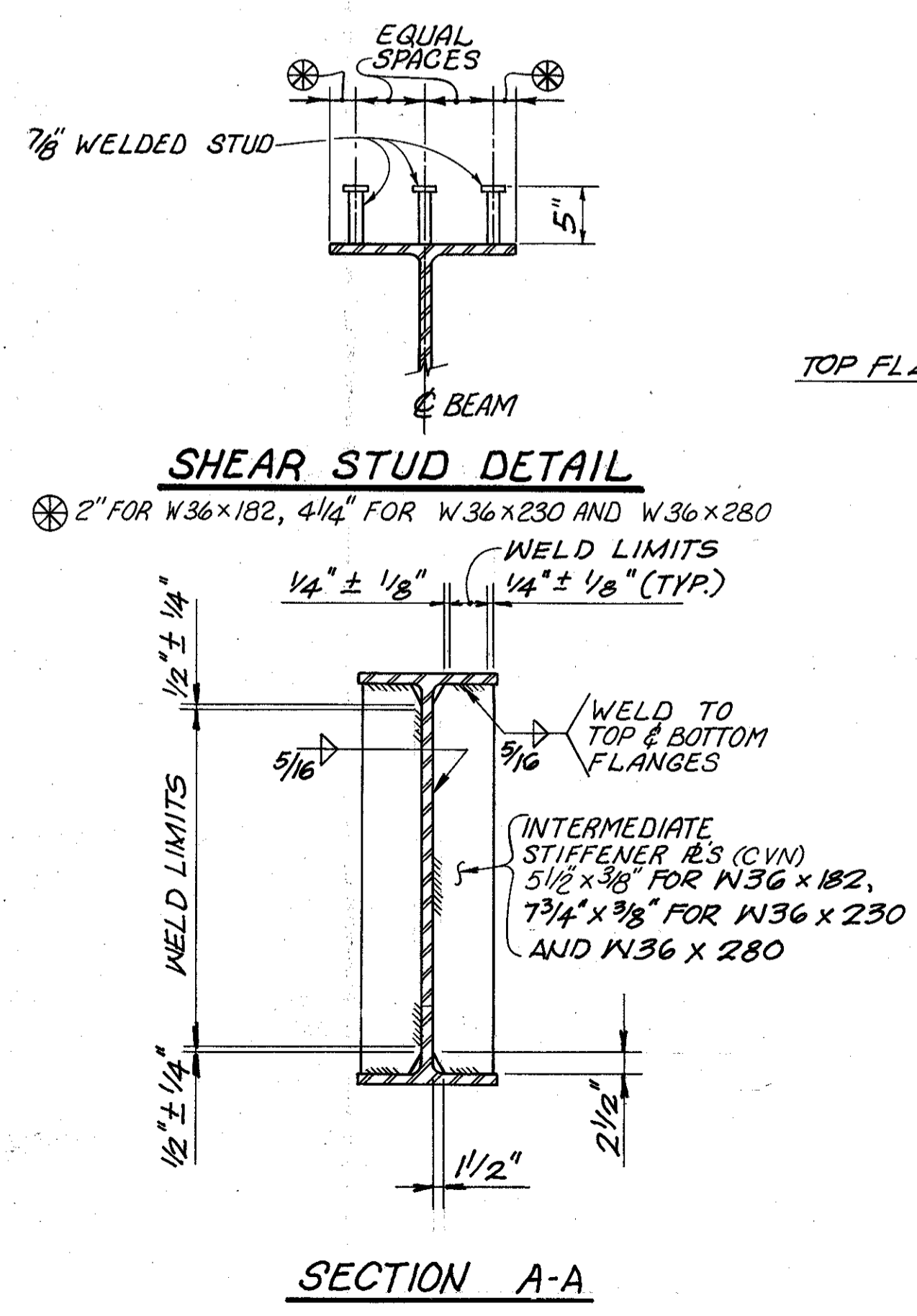


FRAMING PLAN - LEFT STRUCTURE SHOWN
RIGHT STRUCTURE SIMILAR



NOTES

FOR FIELD SPLICE DETAILS, SEE SHEET 16/24.

FOR DEFLECTION AND CAMBER TABLE, SEE SHEET 19/24.

FOR CROSSFRAME DETAILS, SEE SHEET 18/24.

FOR CROSSFRAME ERECTION PROCEDURE, SEE CONSTRUCTION SEQUENCE ON SHEET 5/24.

WHERE A SHAPE OR PLATE IS DESIGNATED (CVN) THE MATERIAL SHALL MEET SPECIFIED MINIMUM NOTCH TOUGHNESS REQUIREMENTS AS SPECIFIED IN 711.01.

FOR HOLES REQUIRED IN THE BEAM WEB AND BOTTOM FLANGE AT ABUTMENTS, SEE STD. DWG. ICD-1-B2 SHEET 5 OF 5.

WELDED ATTACHMENT OF SUPPORTS FOR CONCRETE DECK FINISHING MACHINE MAY BE MADE TO AREAS OF THE FASCIA STRINGER FLANGES DESIGNATED "COMPRESSION". ATTACHMENTS SHALL NOT BE MADE TO AREAS DESIGNATED "TENSION". FILLET WELDS TO COMPRESSION FLANGES SHALL BE NOT CLOSER THAN 1" FROM EDGE OF FLANGE, BE NOT MORE THAN 2" LONG, AND BE NOT SMALLER THAN THE MINIMUM SIZE REQUIRED BY AASHTO.