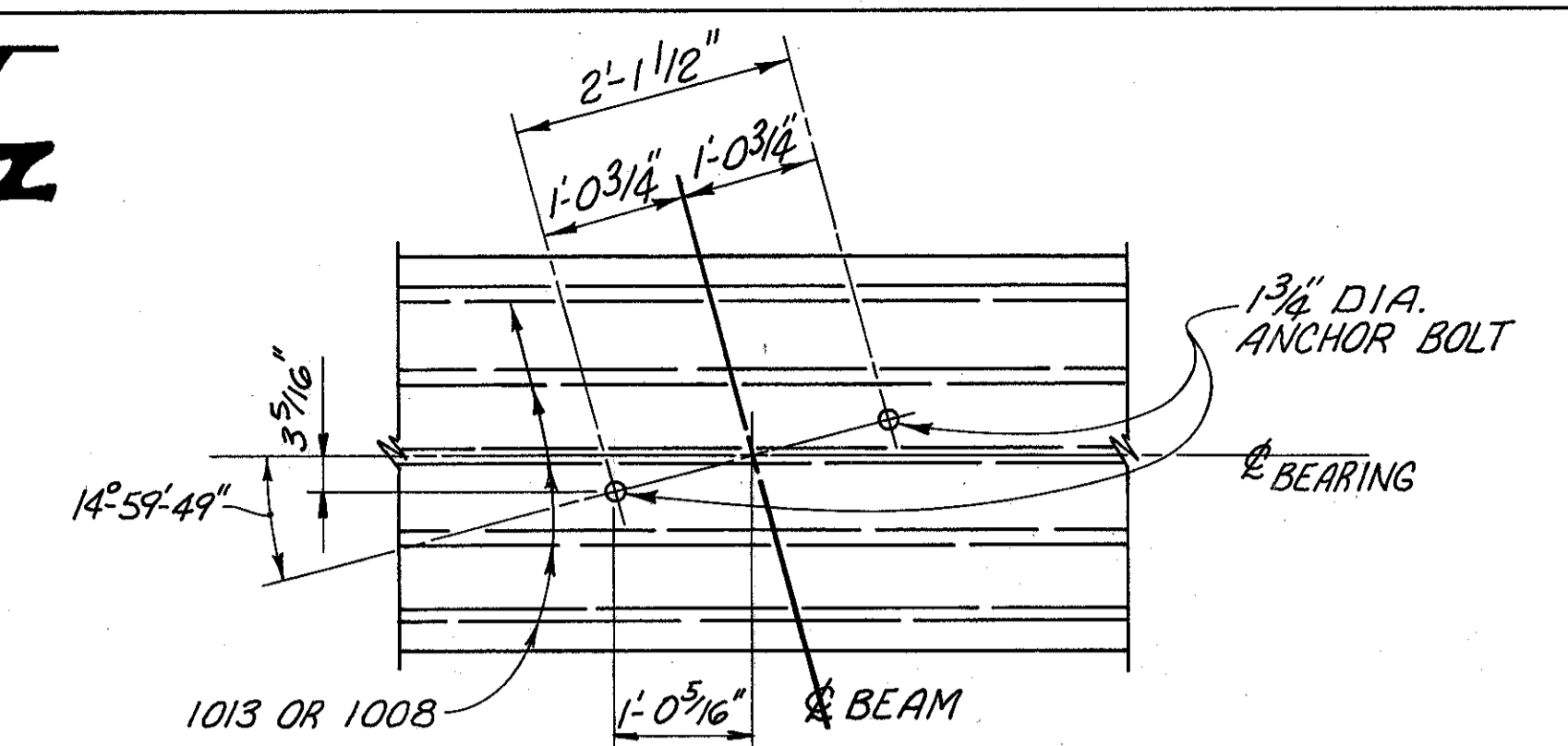
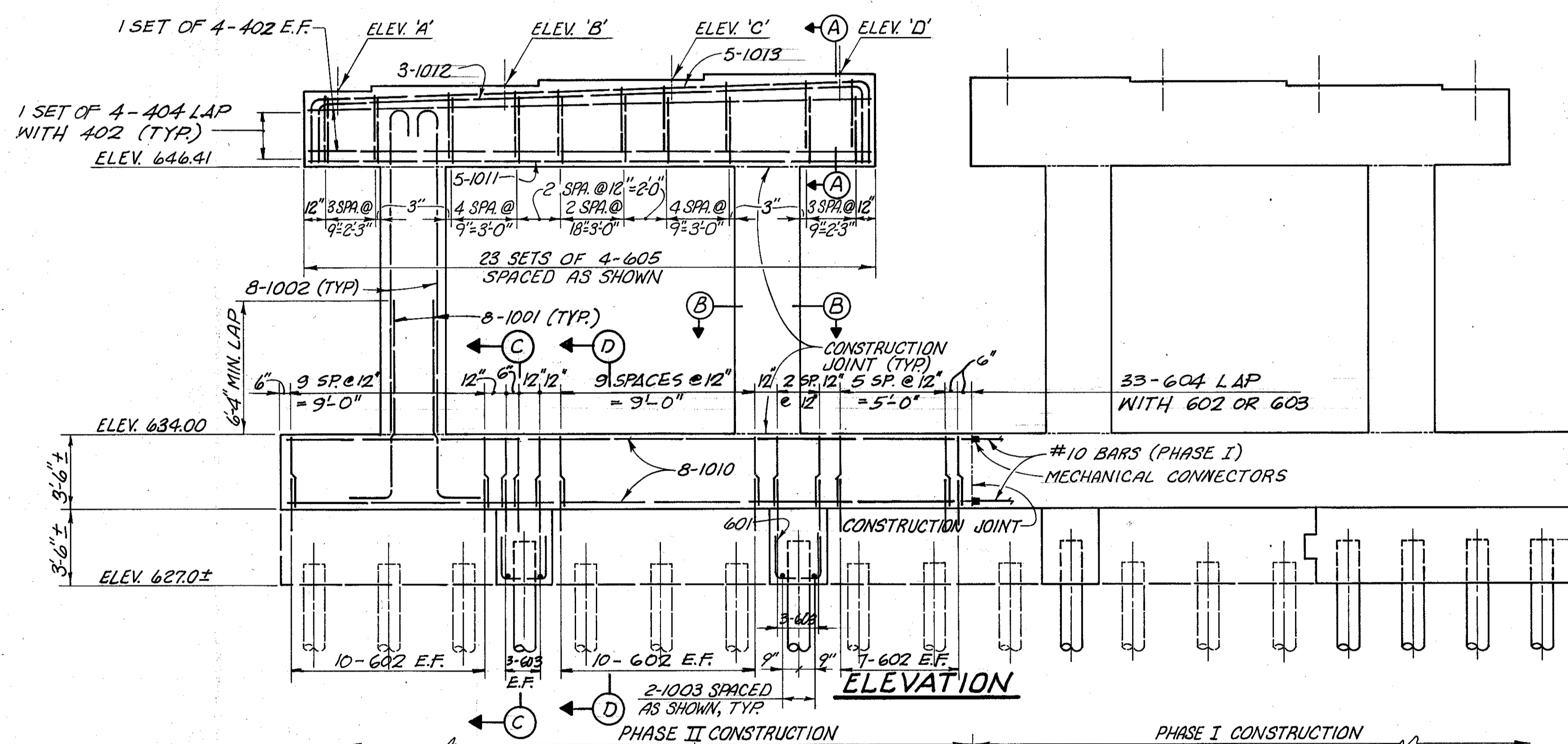


PLAN

(LEFT PIER SHOWN, RIGHT PIER SIMILAR)
 W.P. = WORK POINT: LT. PIER, STA. 402+73.69, 42.00' LT.
 RT. PIER, STA. 402+51.18, 42.00' RT.

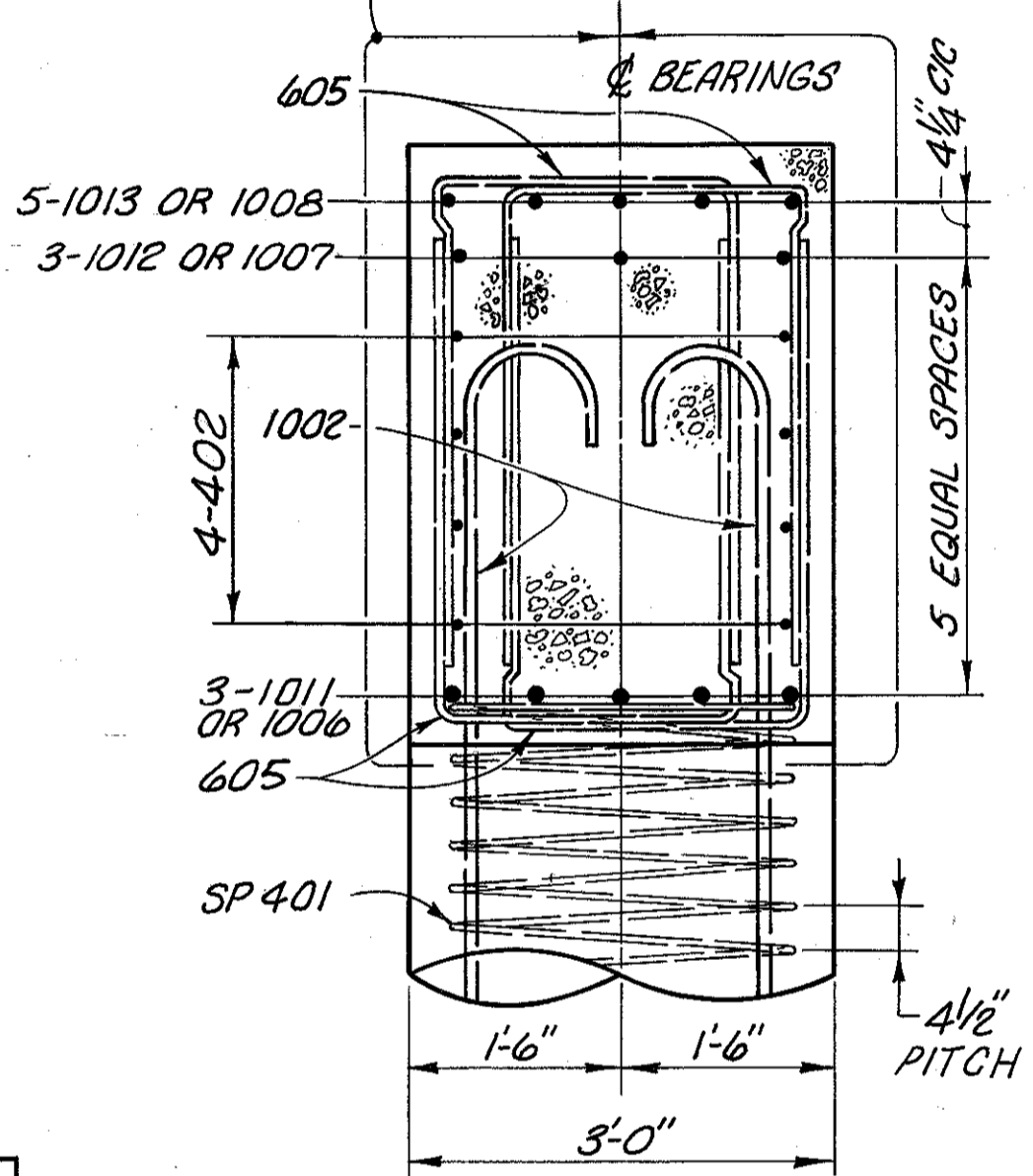


BEARING ANCHOR ROD LAYOUT
 (TYPICAL FOR ALL PIER BEARINGS)

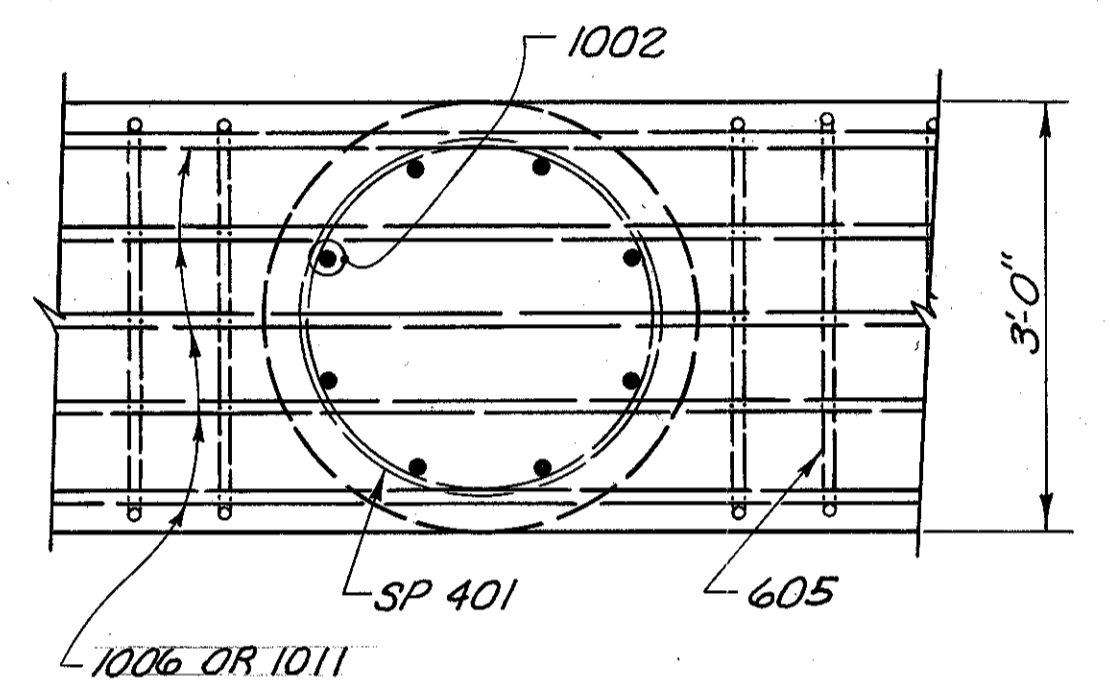


ELEVATION

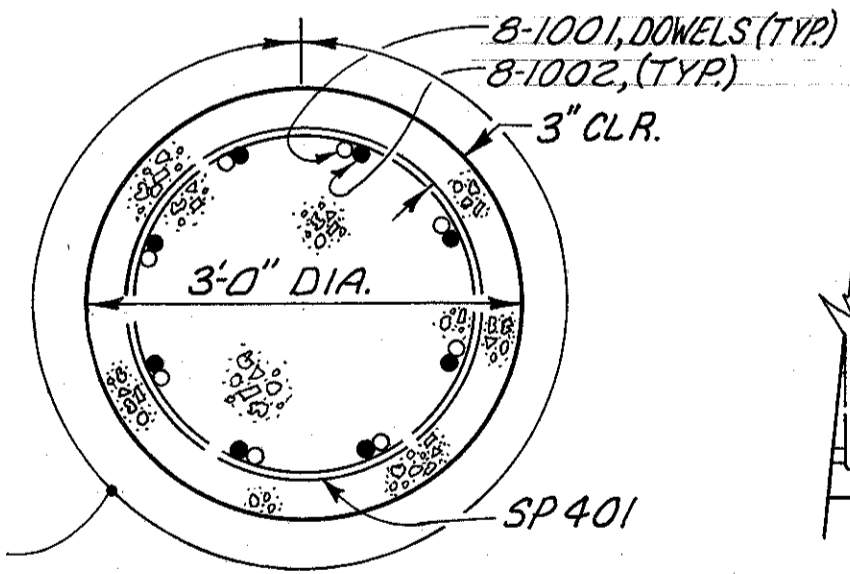
LIMITS OF SEALING OF CONCRETE SURFACES (NON-EPOXY).



SECTION A-A



BOTTOM CAP & COLUMN REINFORCING DETAIL

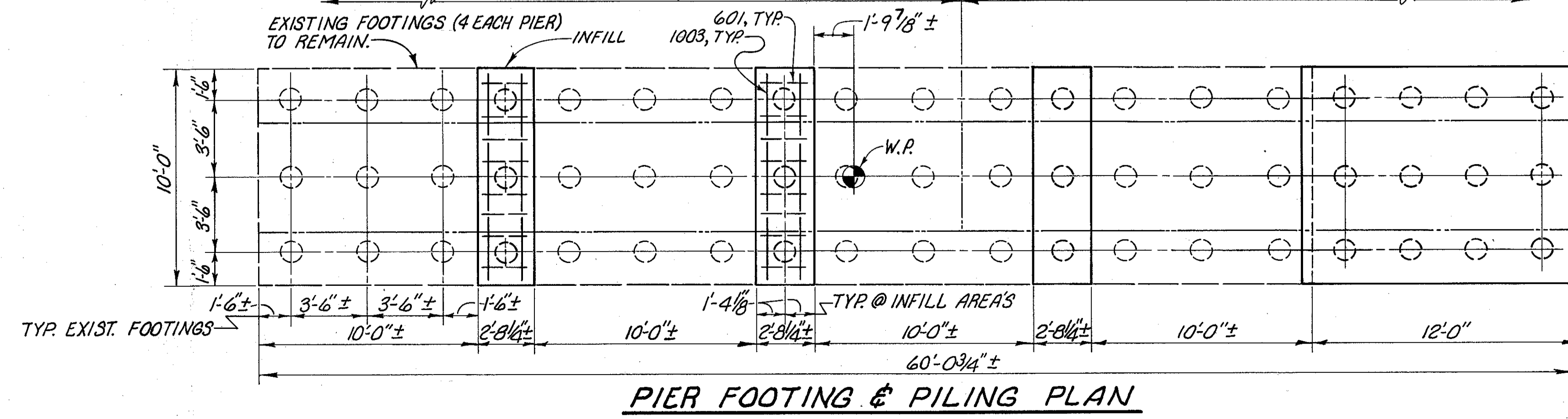


SECTION B-B

TOP OF GRADE BEAM & COLUMN REINFORCING DETAIL

| TABLE OF ELEVATIONS | | ELEVATION | | | |
|---------------------|--|-----------|--------|--------|--------|
| LOCATION | | 'A' | 'B' | 'C' | 'D' |
| LEFT PIER | | 649.94 | 650.06 | 650.18 | 650.31 |
| RIGHT PIER | | 650.02 | 650.14 | 650.25 | 650.37 |

NOTES
 REFER TO SHEET 13/24 FOR PIER CONSTRUCTION NOTES AND SECTION C-C & D-D



PIER FOOTING & PILING PLAN

BRIDGE 64783 C&G BRIDGING, INC. 81105 FORM 10/88