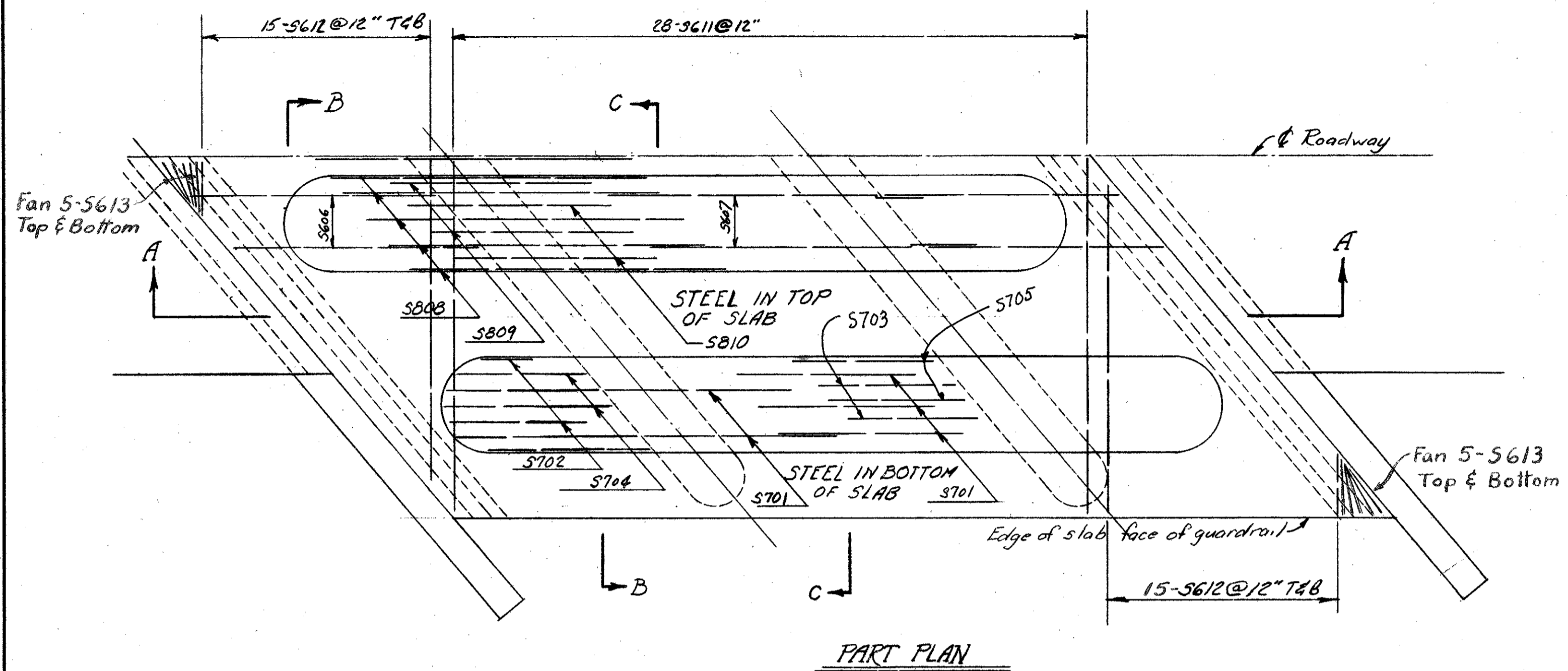
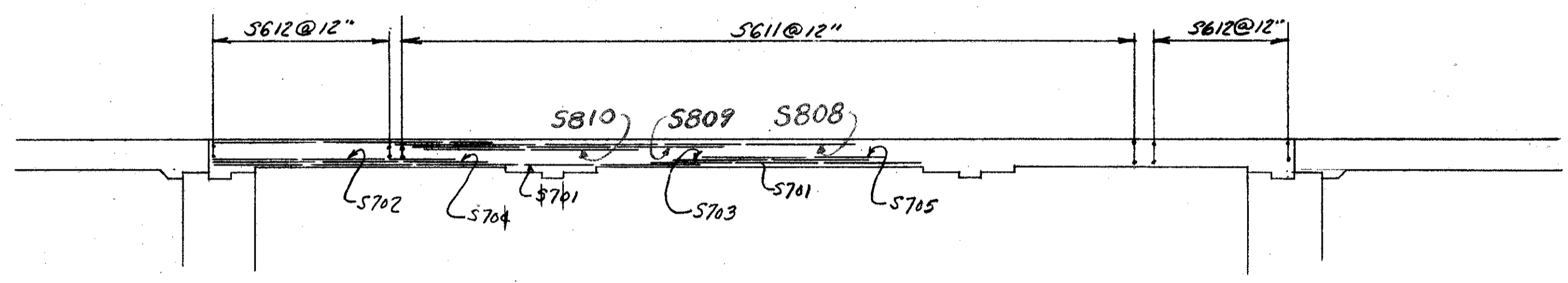


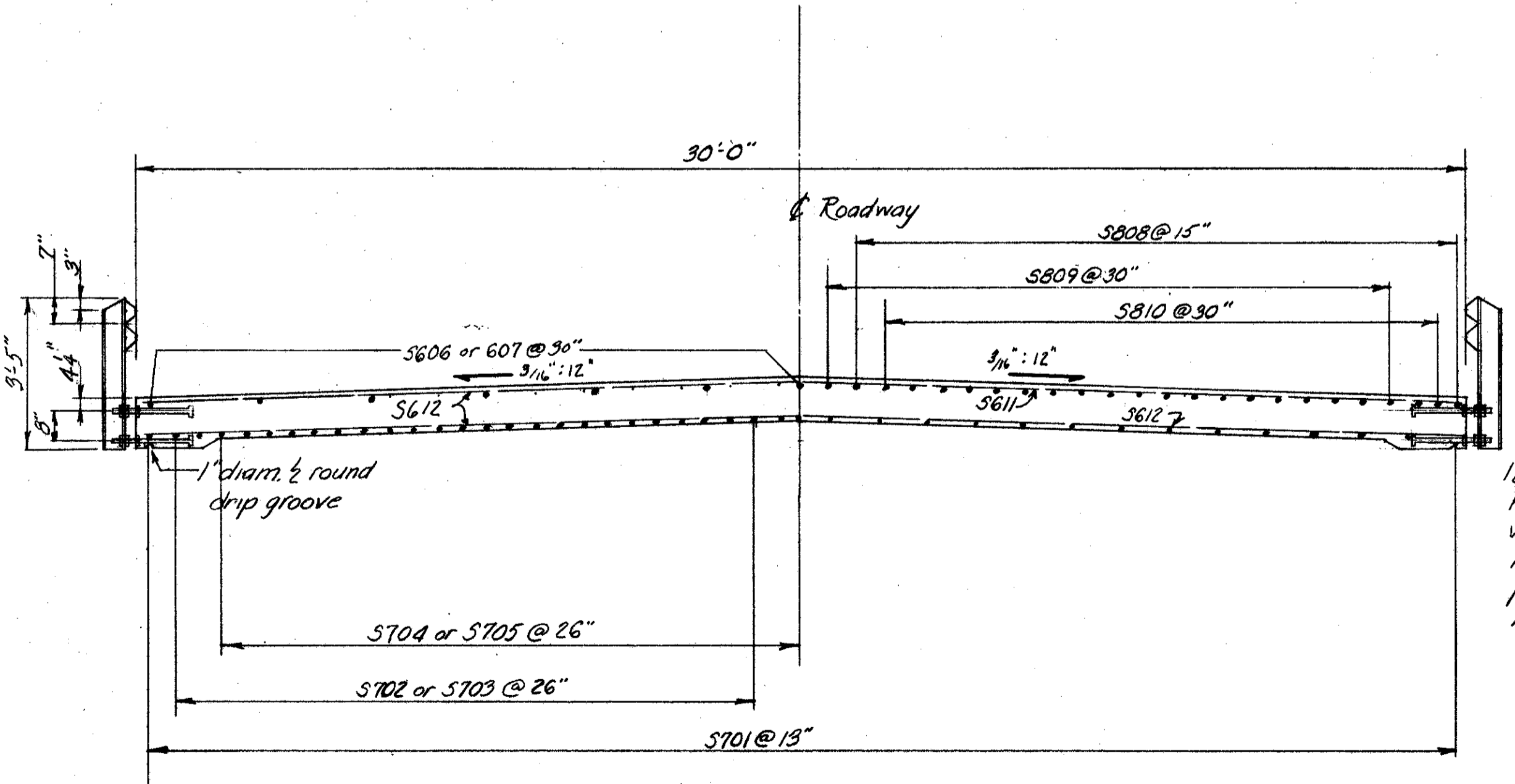
LAKE COUNTY
SEC. LAK-7-7.39



PART PLAN



SECTION A-A

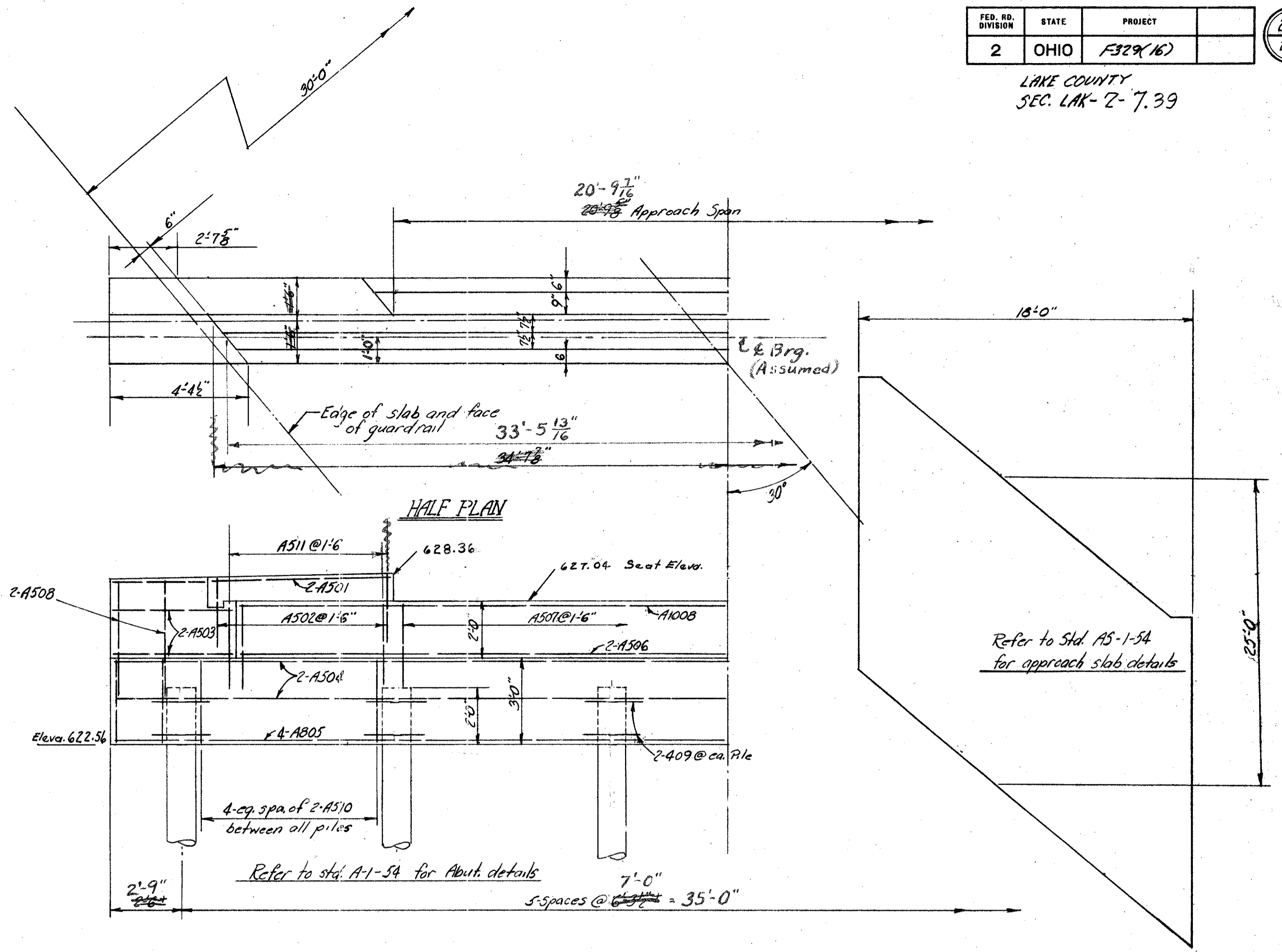


SECTION BB

SECTION CC

1/4" x 20" galv. mach. bolts with square heads. Thread 8" length and provide three galv. hex. nuts / bolt. Fasten bolts rigidly to form before placing concrete. Steel washers to be removed with forms.

For details not shown See Std. Dwg- CS-1-54.



HALF PLAN

HALF ELEVATION

PIER PILE ENCASEMENT as shown Std. Dwg. No. P-1-54 may be omitted provided that the tapered portion, if any, of all pier piles does not extend above the stream bed or the proposed surface of the ground. If the tapered portion of any pile extends above these limitation, the encasement will be required for all pier piles. If the encasement is omitted the pile casings shall a thickness of metal not less than 1/8" gauge, and the painting of the piles shall extend to low water elevation or, if the proposed surface of the ground is above low water, the painting shall extend to at least one foot below the proposed surface of the ground.

PREPARED BY
CAPITOL ENGINEERING ASSOCIATES, DILLSBURG, PA.
FOR

STATE OF OHIO
DEPARTMENT OF HIGHWAYS
DIVISION OF DESIGN AND CONSTRUCTION
BUREAU OF BRIDGES

BRIDGE DETAILS
RELOC. VINE STREET - NORTH
LAKE COUNTY STA. 12+20

DESIGNED	DRAWN	TRACED	CHECKED	REVISED DATE	REVISED
				10-3-58	4-1-59