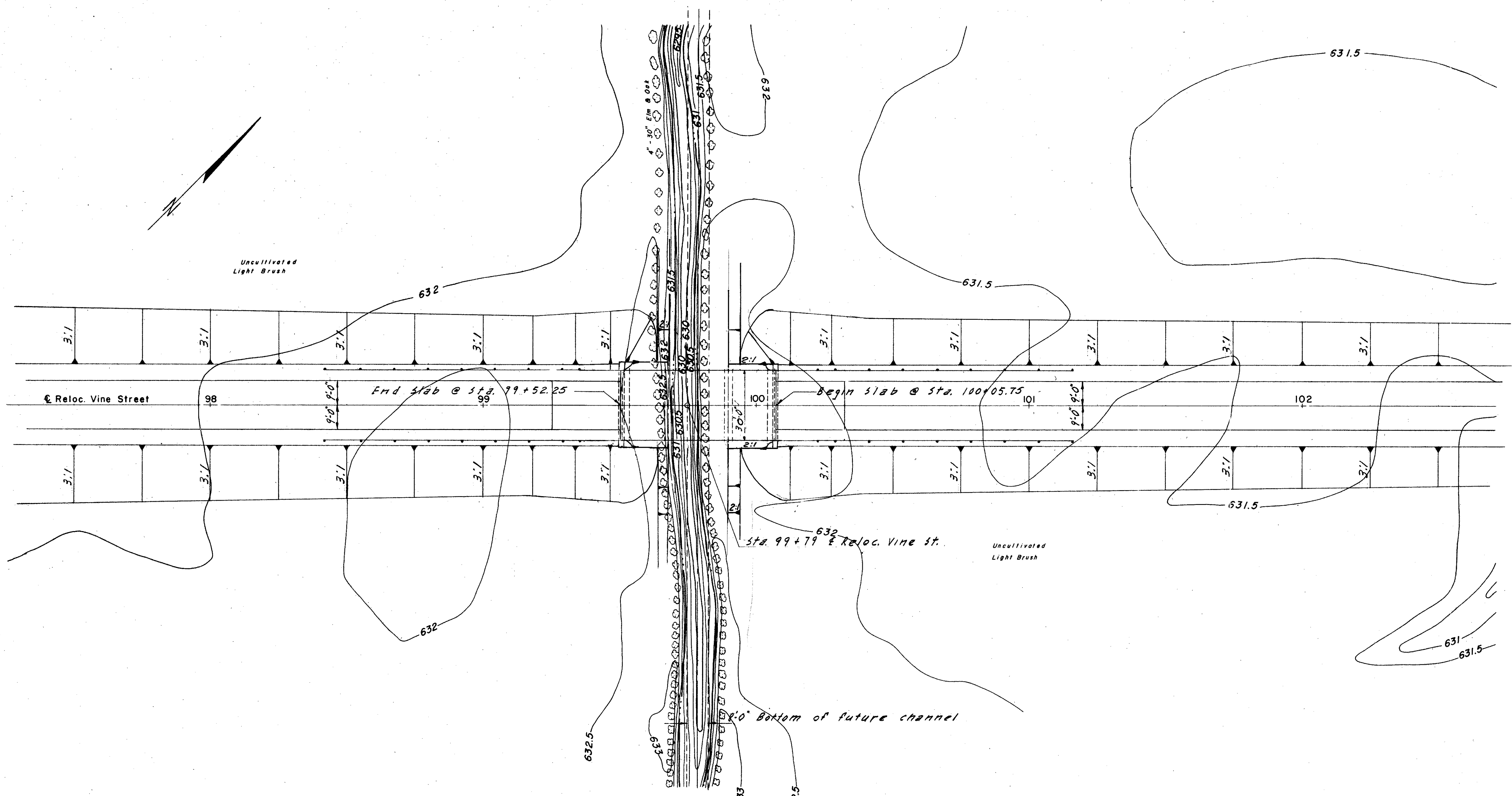


FED. RD. DIVISION	STATE	PROJECT	
2	OHIO	F-329 (16)	250 268

LAKE COUNTY
SEC. LAK-2-7.39

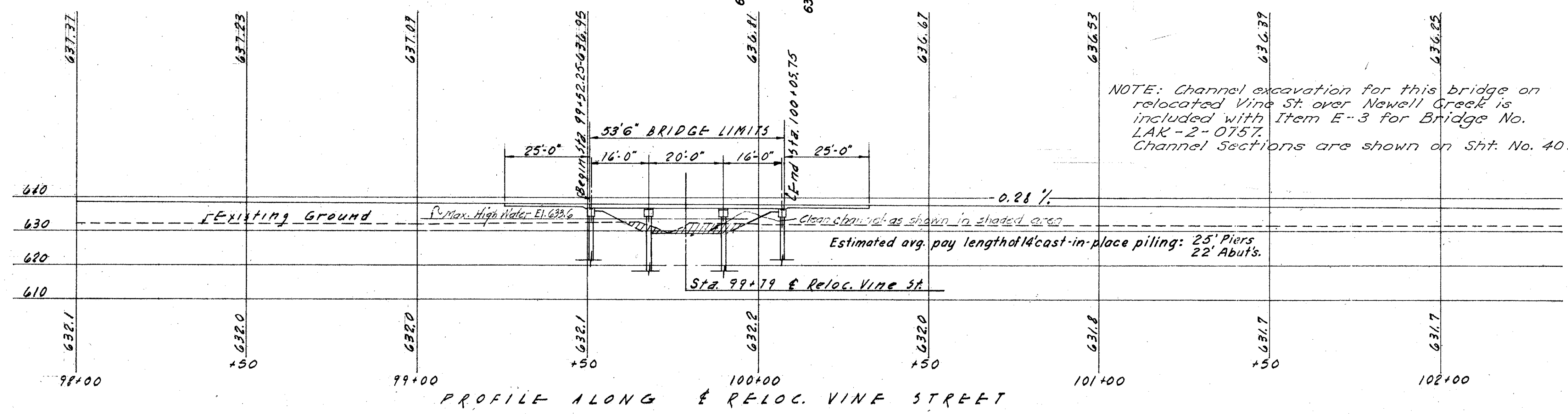
FOUNDATION SOUNDINGS
Foundation design and foundation quantities are based on a study of borings and soil samplings made at the site. This sounding information may be inspected in the Interstate Projects Office and in Division Office, but the state does not guarantee the accuracy thereof.



PROPOSED STRUCTURE
TYPE: 3 Span Continuous Reinforced Concrete Slab & Pile Bents.
SPANS: 16'-0", 20'-0" & 16'-0"
ROADWAY: 30'-0"
LOAD FREQUENCY: CF-130
SKEW: 0°-00'-00"
WEARING SURFACE: 3" Monolithic
APPROACH SLAB: 25'-0" Long (Special)
ALIGNMENT: Tangent

DRAINAGE AREA - 3.13 SQ. MILES.
25 YEAR Q = 725 C.F.S.

NOTE: Channel excavation for this bridge on relocated Vine St. over Newell Creek is included with Item E-3 for Bridge No. LAK-2-0757. Channel Sections are shown on Sht. No. 40.



PREPARED BY
CAPITOL ENGINEERING ASSOCIATES, DILLSBURG, PA.
FOR

STATE OF OHIO
DEPARTMENT OF HIGHWAYS
DIVISION OF DESIGN AND CONSTRUCTION
BUREAU OF BRIDGES

SITE PLAN
RELOC. VINE ST. OVER NEWELL CREEK
LAKE COUNTY
STA. 99 + 79.00

DESIGNED	DRAWN	TRACED	CHECKED	REVISED DATE	REVISED
P.J.P.	P.J.P.			AM. EL. - C.H.C. 9-18-58	