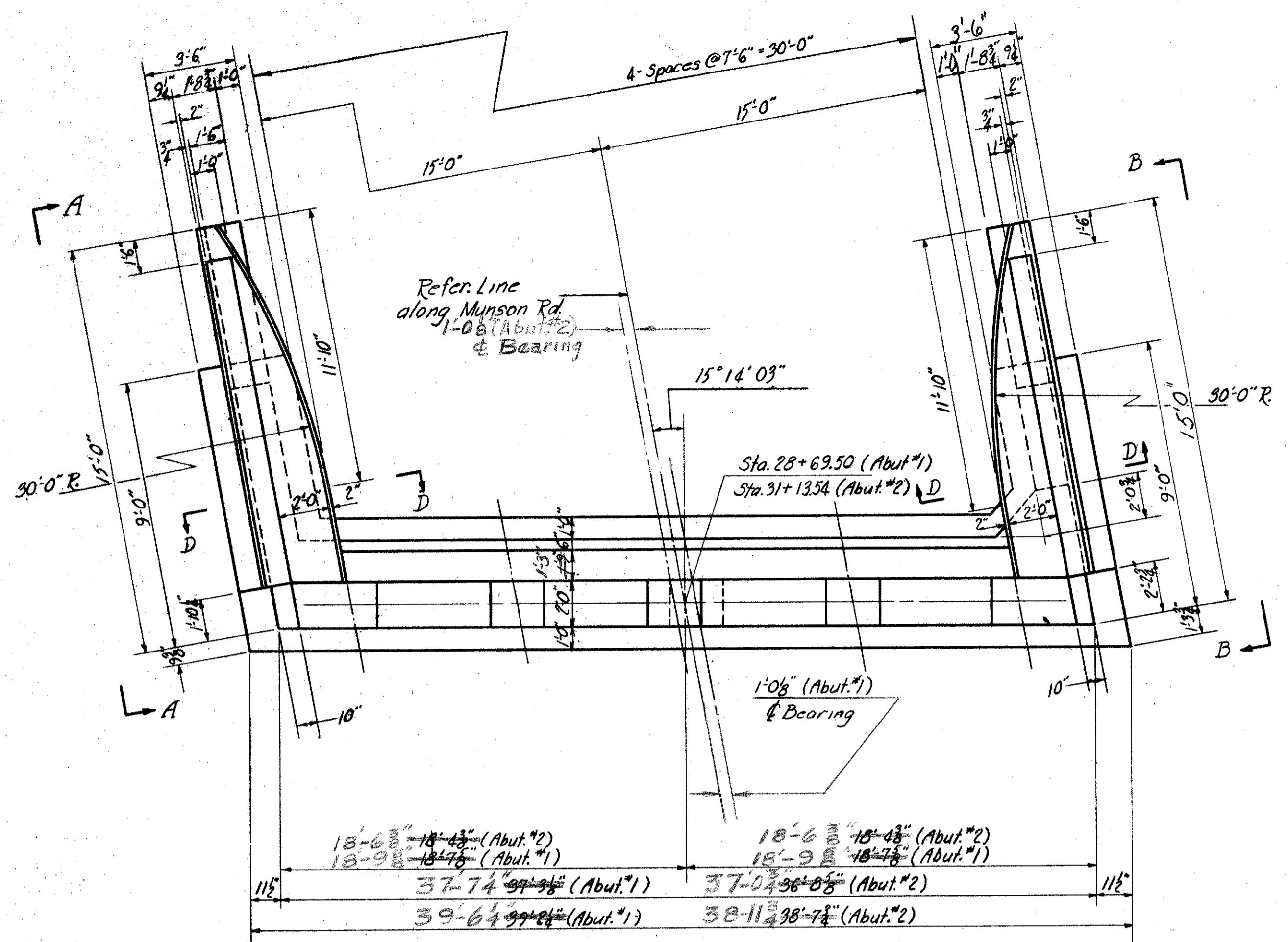
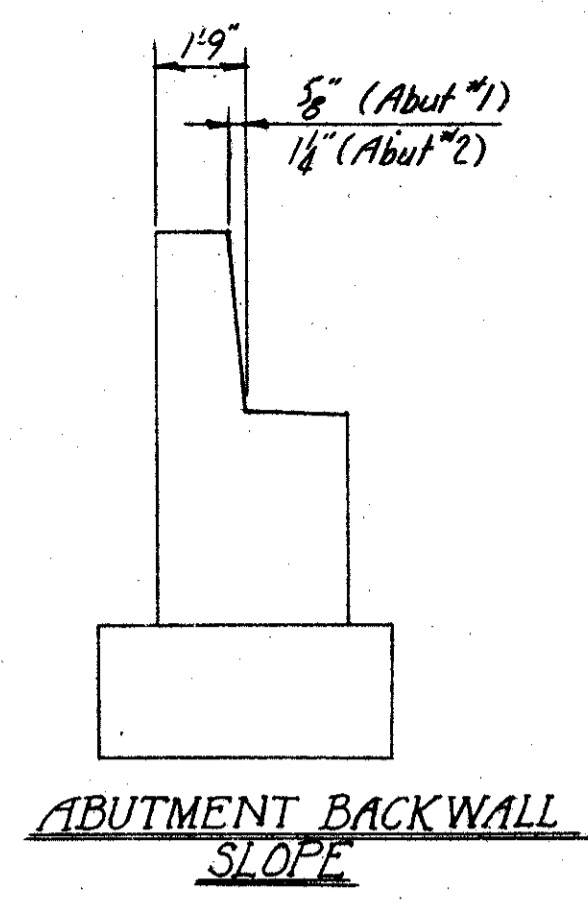


LAKE COUNTY  
SEC.-LAK-2-739

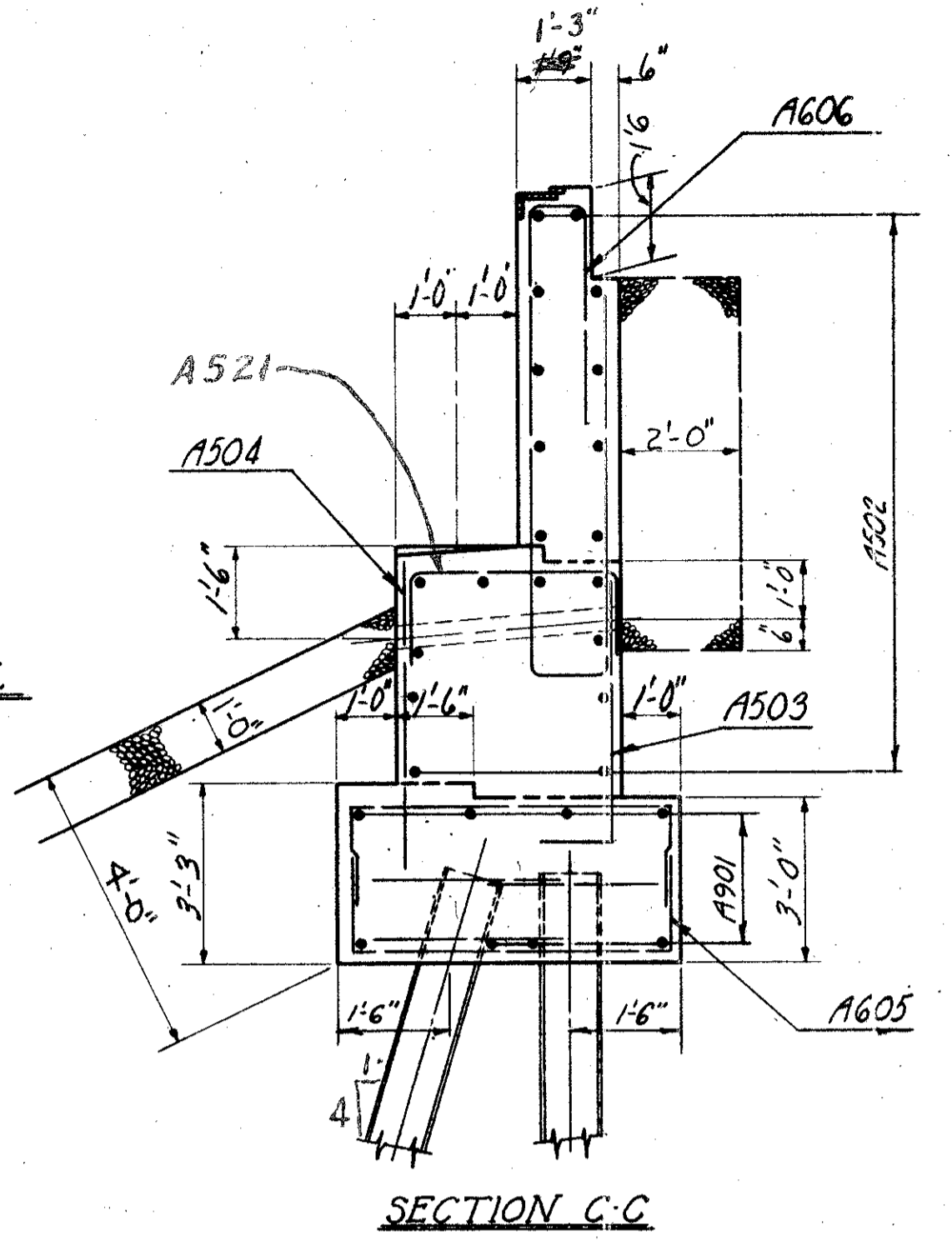
MICROFIL  
DEC 5 1986



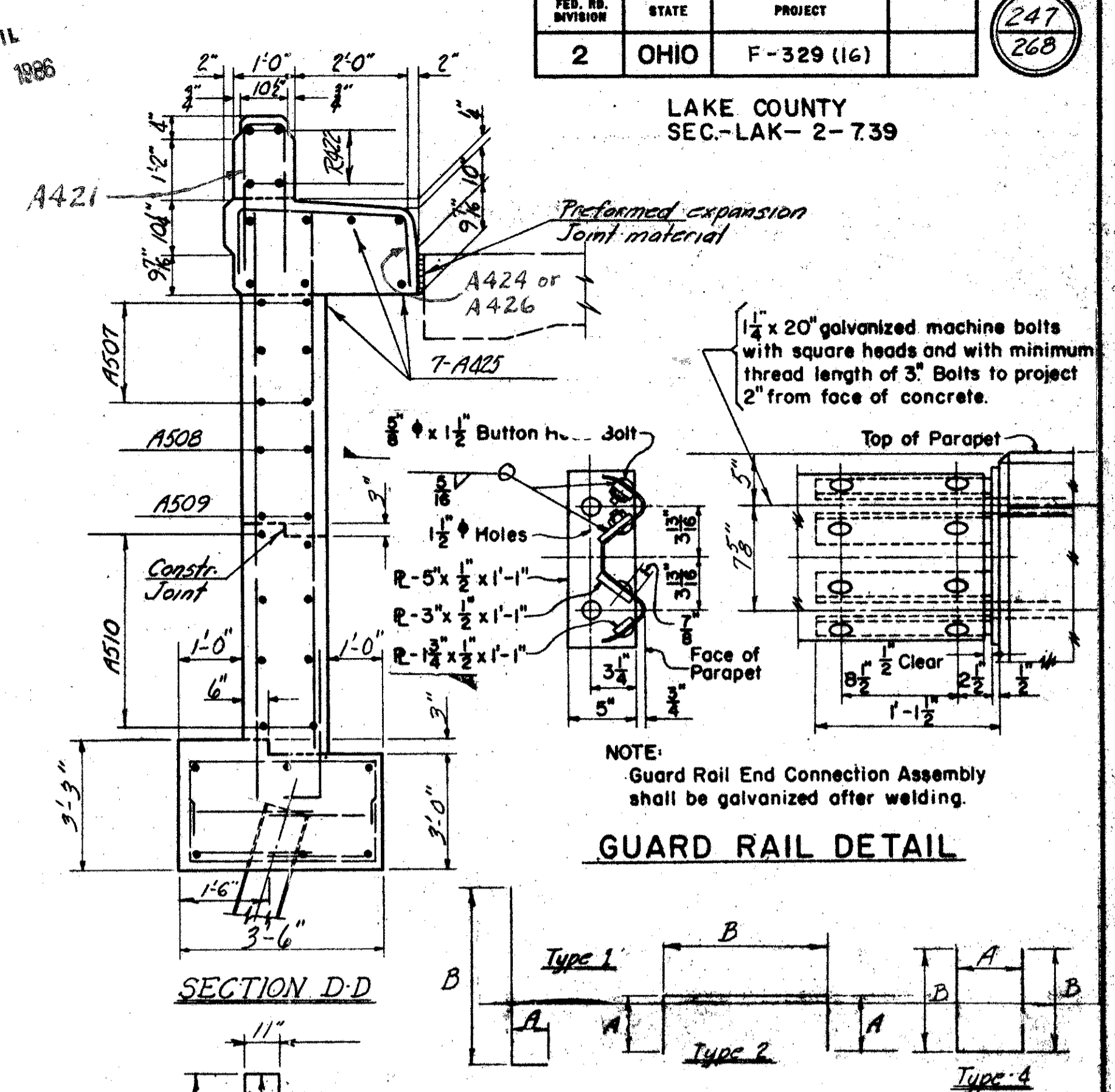
PLAN



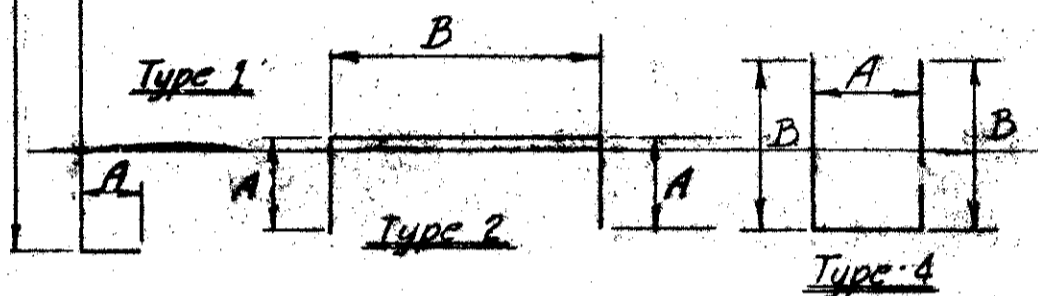
ABUTMENT BACKWALL SLOPE



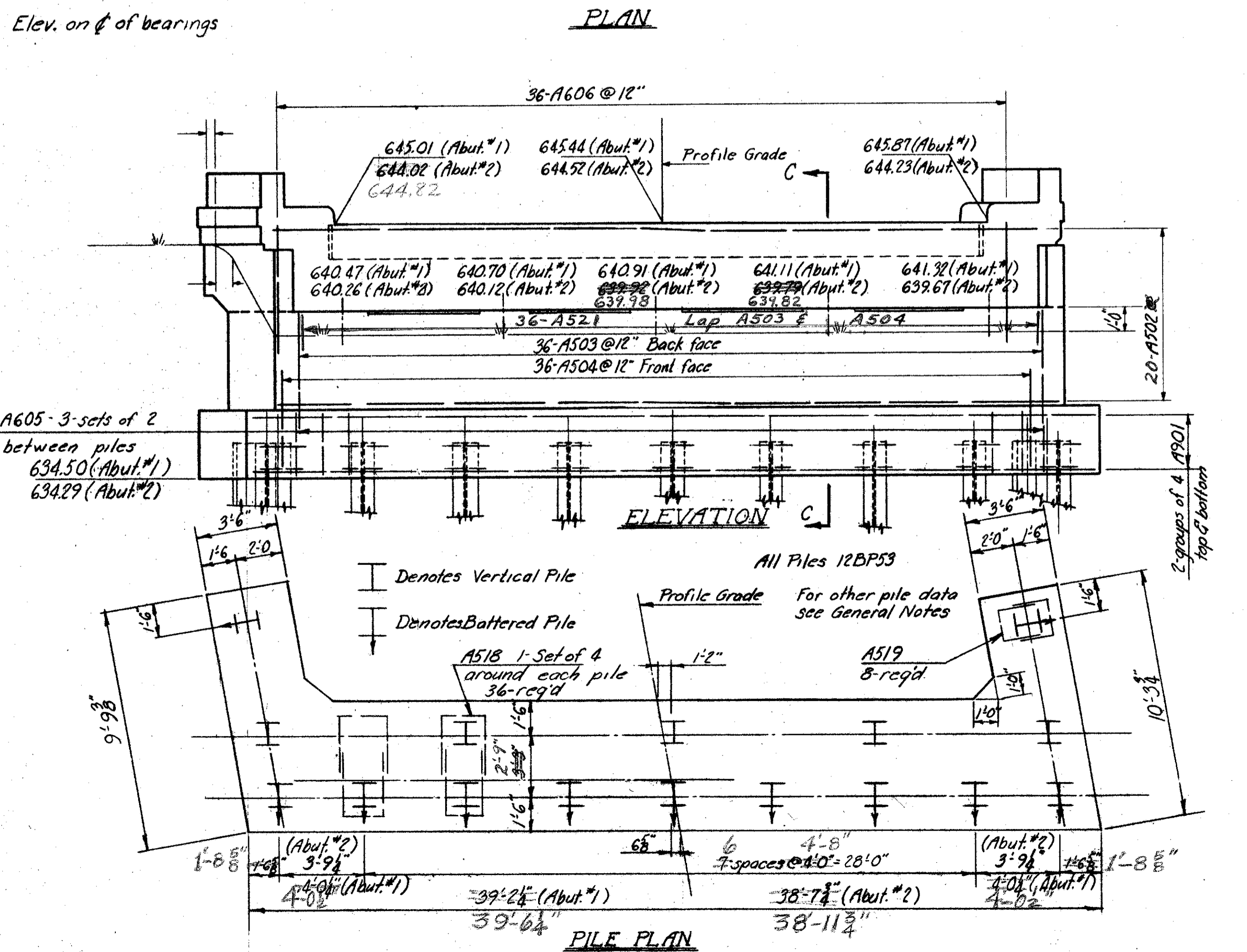
SECTION C-C



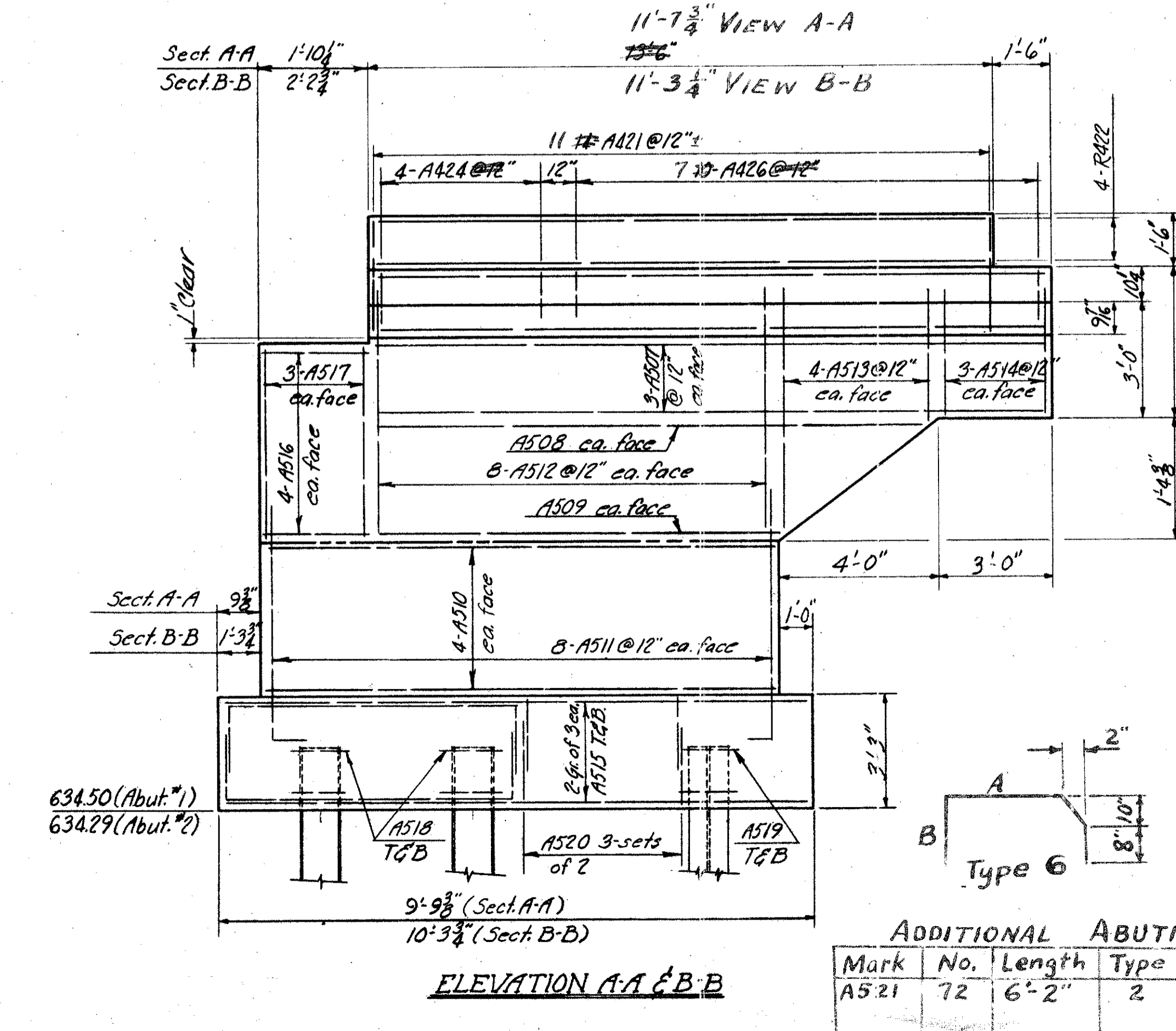
GUARD RAIL DETAIL



MARK	NO	LENGTH	TYPE	A	B	WEIGHT
A901	16	38'-3"	Str.			2080
A502	40	36'-4"	Str.	(1'-0")		1520
A503	72	4'-8" (1)	Str.	3'-8"		374351
A504	72	5'-0"	Str.	(5'-3")		376
A605	96	10'-5" (4)	2	2'-3"	5'-4"	1505140
A606	72	14'-2"	3			1530
A507	24	15'-6" (2)	Str.			383307
A508	8	12'-3"	Str.			40596
A509	8	12'-5" (6)	Str.			746
A510	32	9'-7" (6)	Str.	(1'-0")		372250
A511	64	10'-0"	1	1'-6"	9'-0"	635
A512	64	4'-6"	Str.			300
A513	32	4'-6" to 3'-2"	Str.			128
A514	24	3'-2"	Str.			79
A515	24	9'-5"	Str.			236
A516	32	12'-3" (9)	Str.			12530
A517	24	3'-0"	Str.			75
A518	72	9'-3"	4	1'-3"	4'-0"	695
A519	16	6'-1"	4	1'-5"	2'-10"	102
A520	24	7'-8"	2	2'-5"	3'-2"	192
A421	56	5'-8"	5	8"	2'-6"	272182
A422	16	13'-2" (10)	Str.	WITH S-14		228
A424	16	5'-8" (10)	6	2'-10"	1'-6"	3862
A425	28	12'-9"	Str.			238
A426	48	4'-3" (10)	7	9" to 1'-6"		20385



PILE PLAN



ELEVATION A-A & B-B

ADDITIONAL ABUTMENT BARS

Mark	No.	Length	Type	A	B	Weight
A521	72	6'-2"	2	1'-6"	3'-5"	463

PREPARED BY  
CAPITOL ENGINEERING ASSOCIATES DILLSBURG, PA.

STATE OF OHIO  
DEPARTMENT OF HIGHWAYS  
DIVISION OF DESIGN AND CONSTRUCTION  
BUREAU OF BRIDGES

ABUTMENT DETAILS  
BRIDGE NO. LAK-2-1025  
RELOC. S.R.2 UNDER MUNSON ROAD  
LAKE COUNTY  
STA. 441+28.08

Revised 1-21-59  
Revised 2-16-59

DESIGNED	DRAWN	TRACED	CHECKED	REVISED DATE	REVISION
M			P	1-21-59 2-16-59	1-11-59 4-1-59