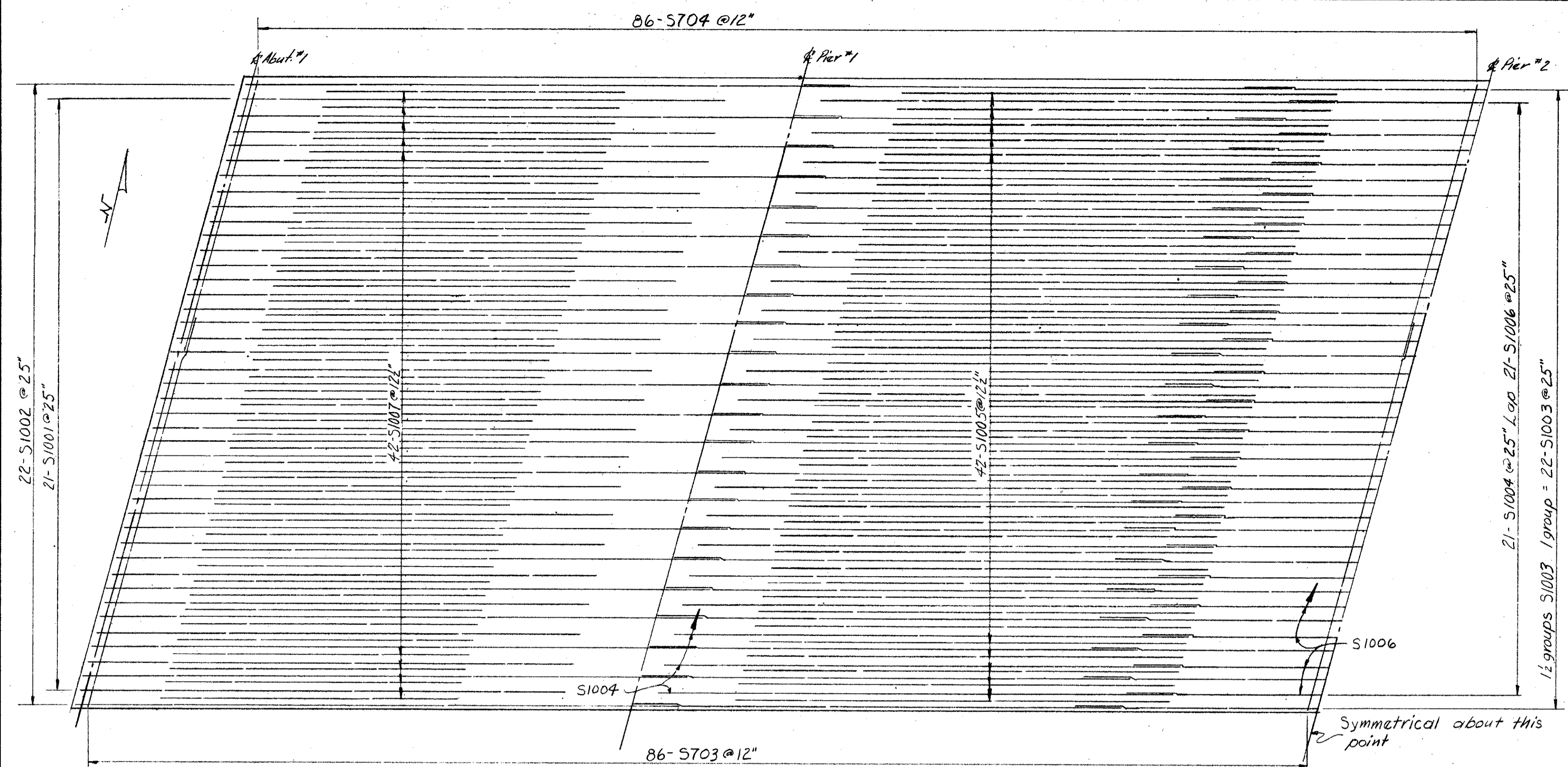
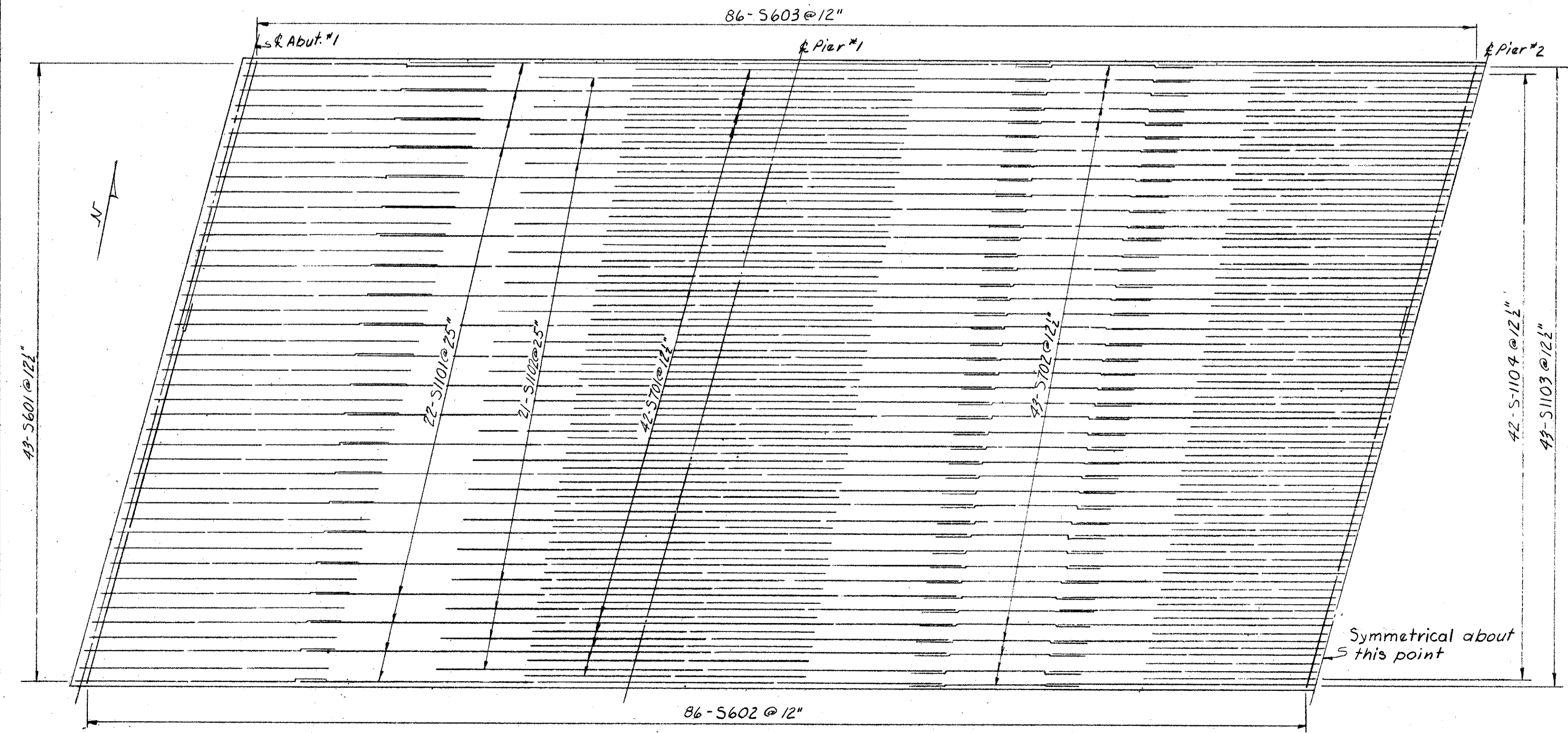


MICROFIL
DEC 5 1986

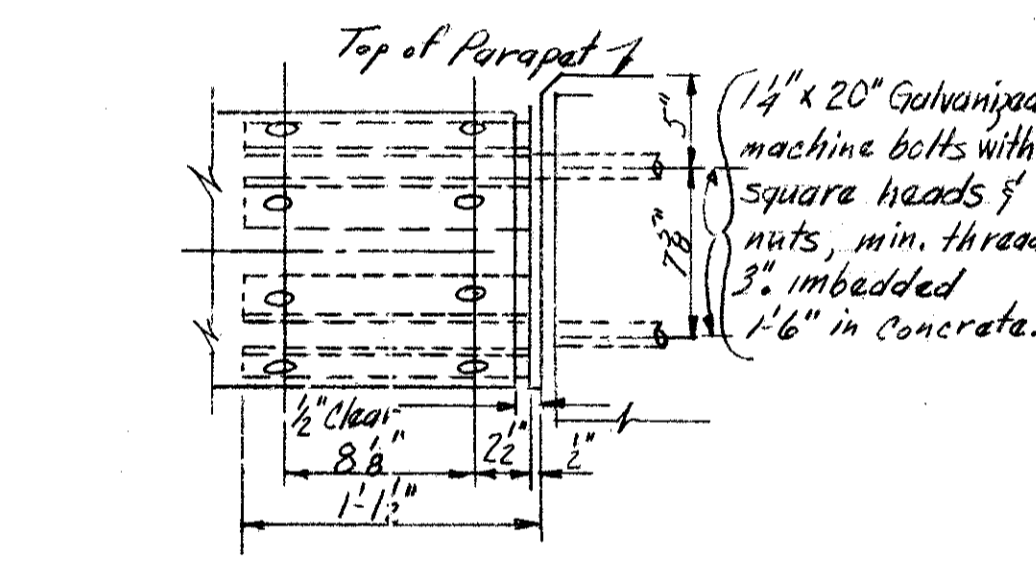
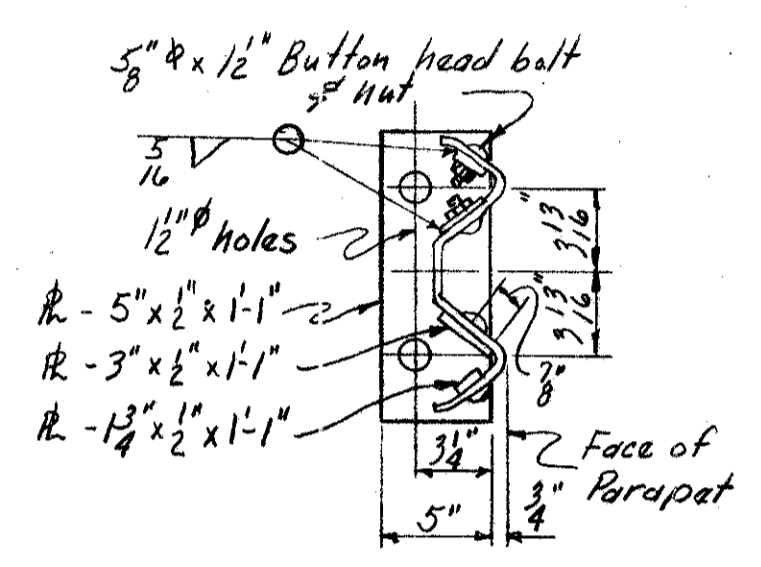
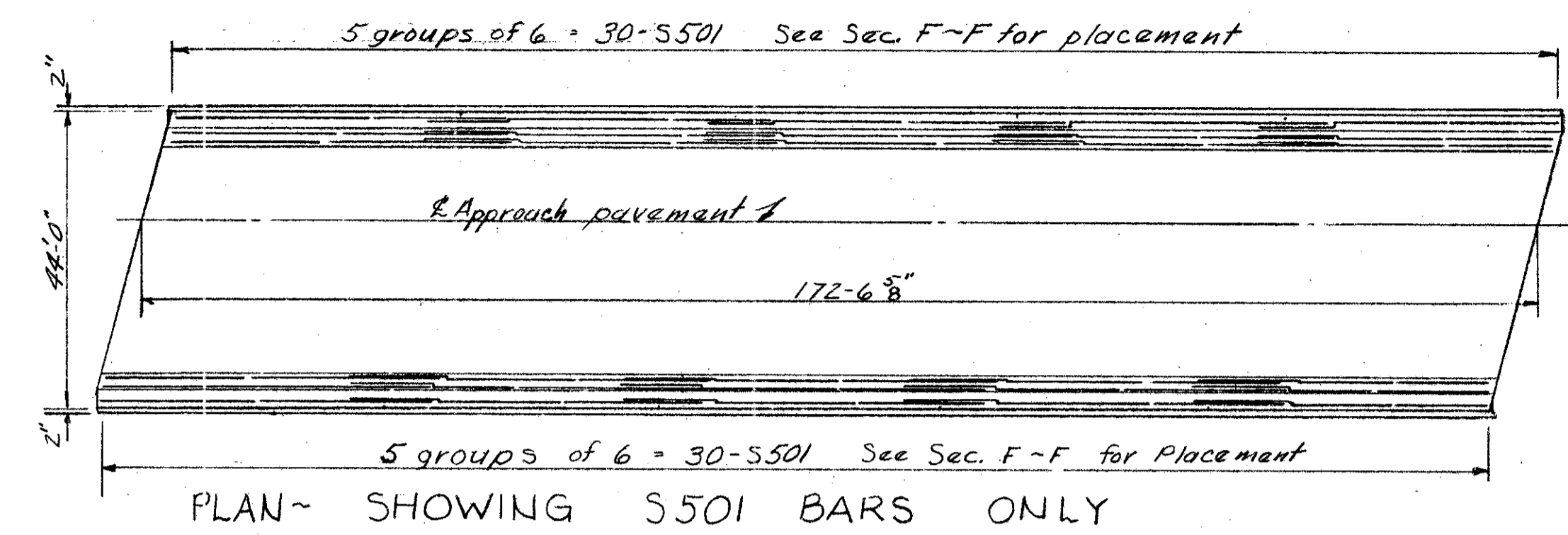
LAKE COUNTY
SEC. LAK-2-739



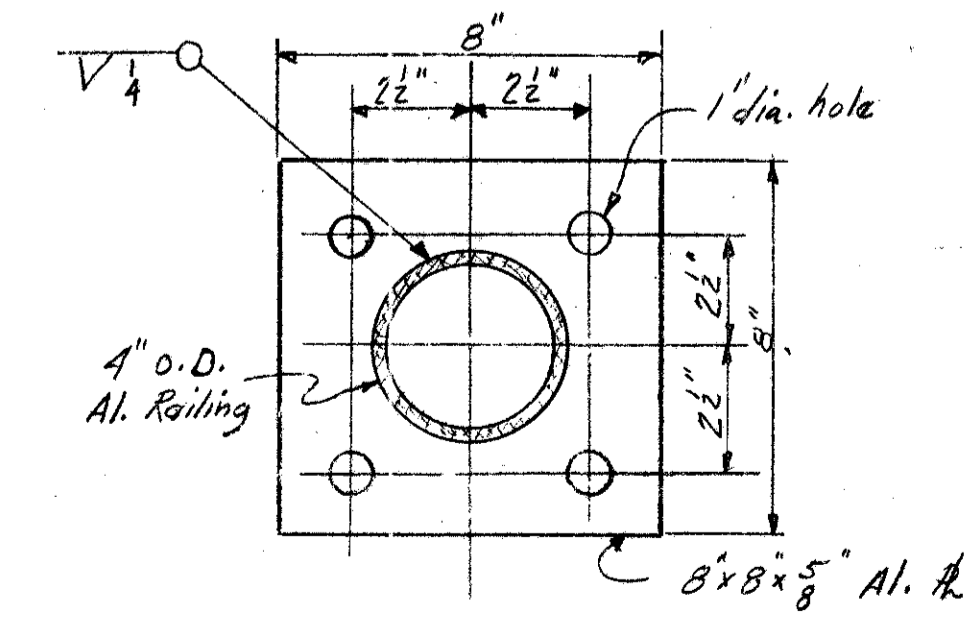
PLAN~ REINFORCING STEEL IN BOTTOM OF DECK SOUTH BRIDGE, (NORTH BRIDGE OPPOSITE HAND)



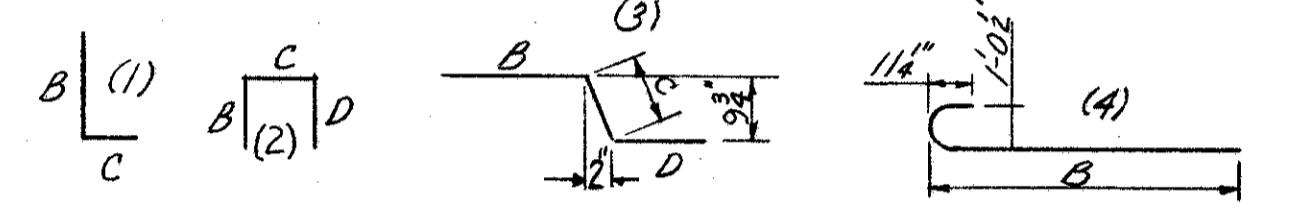
PLAN~ REINFORCING STEEL IN TOP OF DECK SOUTH BRIDGE, (NORTH BRIDGE OPPOSITE HAND)



GUARD RAIL DETAIL
Guard Rail End Assembly shall be galvanized or fire welding. Include with Item S-14 Railing per Payment.



DETAIL RAILING END ANCHOR PLATE
4 Req'd per Bridge, payment under Item S-14



REINFORCING STEEL LIST 2 STRUCTURES									
MARK	N ^o	N ^o	Total	Length	Weight	Type	B	C	D
S401	472	472	944	2'-5"	1526	1	2'-0"	6"	
S501	60	60	120	35'-9"	4475	Str.			
S502	236	236	472	2'-11"	1438	1	2'-0"	10"	
S503	236	236	472	3'-1"	1576	3	2'-0"	10"	6"
S601	86	86	172	17'-6"	4521	Str.			
S602	172	172	344	28'-0"	14467	Str.			
S603	172	172	344	19'-6"	10075	Str.			
S701	84	84	168	19'-6"	6696	Str.			
S702	86	86	172	12'-0"	4219	Str.			
S703	172	172	344	28'-0"	19688	Str.			
S704	172	172	344	19'-6"	13711	Str.			
S1001	42	42	84	34'-11"	12622	4	33'-6"		
S1002	44	44	88	43'-3"	16377	4	41'-0"		
S1003	66	66	132	33'-10"	19275	Str.			
S1004	42	42	84	35'-9"	12922	Str.			
S1005	84	84	168	30'-0"	21687	Str.			
S1006	21	21	42	27'-0"	4880	Str.			
S1007	84	84	168	20'-6"	14820	Str.			
S1101	44	44	88	44'-3"	20689	Str.			
S1102	42	42	84	35'-0"	15620	Str.			
S1103	43	43	86	41'-3"	18898	Str.			
S1104	42	42	84	28'-0"	12496	Str.			
* R401	236	236	472	1'-9"		2	6"	6"	6"
* R402	80	80	160	1'-6"					
* R403	16	16	32	11'-9"					
Total Weight 251,506 (2) Decks									

Note: First digit where 3 digits are used is first 2 digits where 4 digits are used indicates the bar size. Example S1001 = #10 bar, S701 = #7 bar

* Include with Item S-14 for payment.

PREPARED BY
CAPITOL ENGINEERING ASSOCIATES, DILLSBURG, PA.
FOR
STATE OF OHIO
DEPARTMENT OF HIGHWAYS
DIVISION OF DESIGN AND CONSTRUCTION
BUREAU OF BRIDGES
DECK DETAILS
BRIDGE NO. LAK-2-1006
RELOC. S.R.2 OVER S.R.615
LAKE COUNTY
STA. 402 + 61.96

DESIGNED	DRAWN	TRACED	CHECKED	REVISED	DATE	REVISED
	DRT					