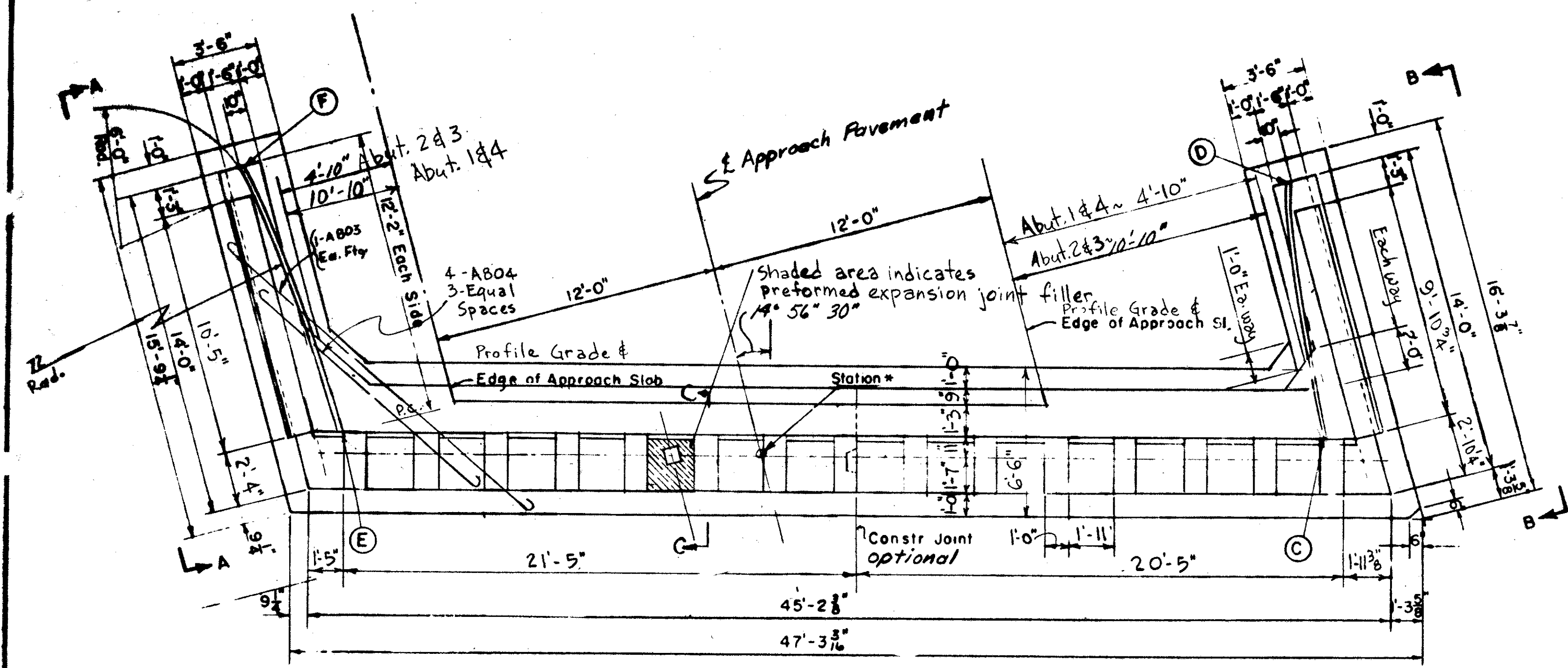


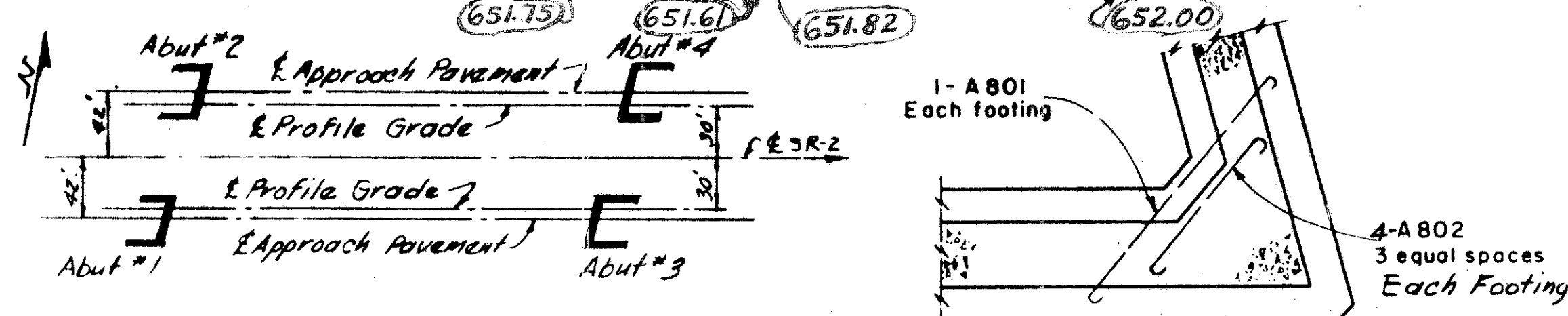
LAKE COUNTY
SEC. LAK-2-739

MICROFIL
DEC 5

LOCATION	ELEVATIONS						STATIONS*	ELEVATION	STATIONS
	A	B	C	D	E	F			
Abutment #1	650.36	649.44	652.06	652.09	652.75	652.74	401+66.72	652.43	401+65.25
Abutment #2	650.35	649.43	652.06	652.09	652.75	652.75	401+83.14	652.42	401+81.67
Abutment #3	650.05	649.13	651.75	651.68	651.80	651.73	403+34.78	652.10	403+36.25
Abutment #4	649.90	649.98	651.53	651.53	651.75	651.68	403+51.20	652.02	403+58.67



PLAN



LOCATION PLAN

SECTION D-D

Showing Corner Bars Only

REINFORCING STEEL LIST ABUT. #1,2,3,4

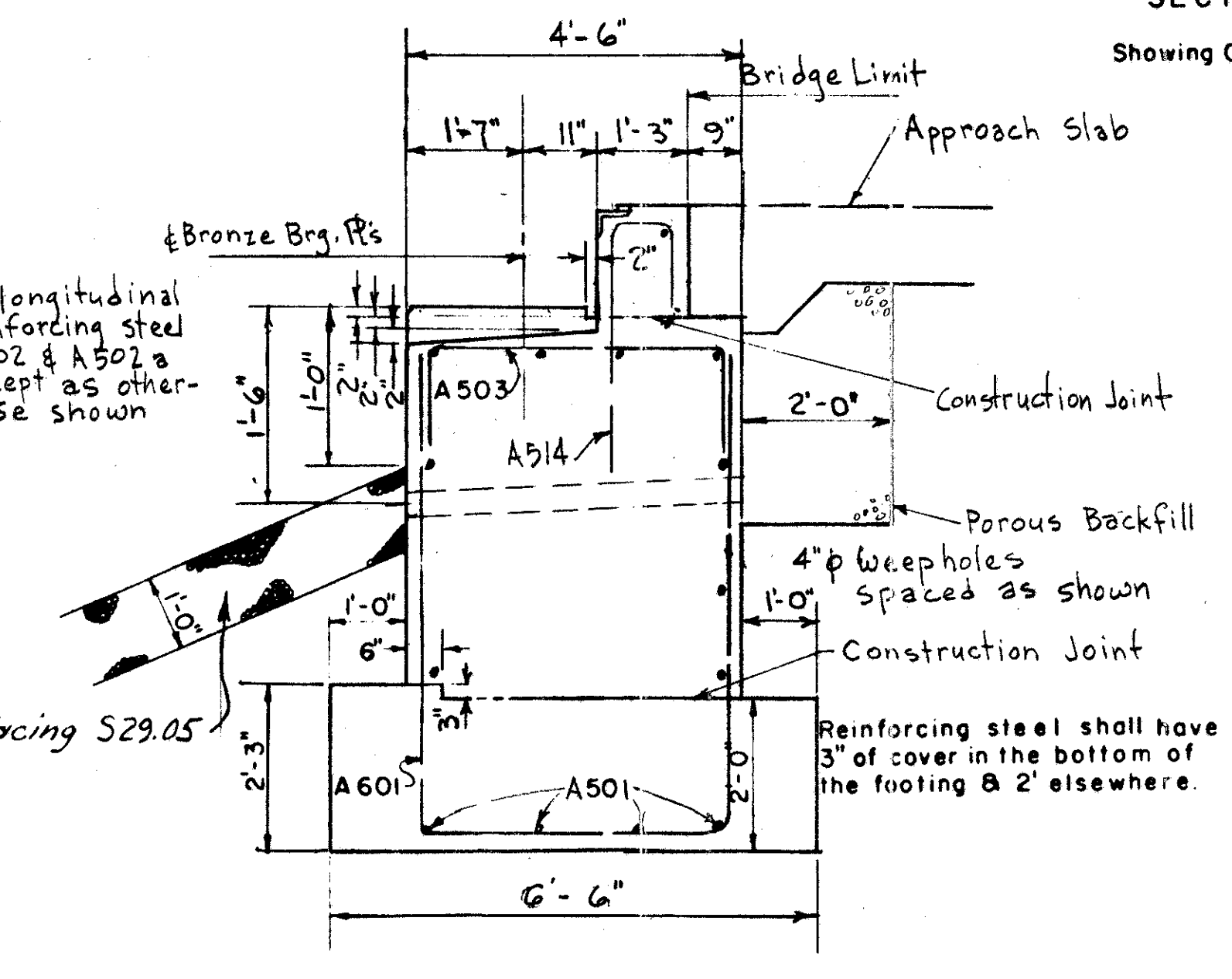
MARK	NO	LENGTH	WEIGHT	Type	B	C	D
A501	32	24'-3"	811	Str.			
A502	40	26'-4"	1092	Str.			
A502a	40	21'-0"	877	Str.			
A503	92	8'-0"	770	1	2'-0"	4'-2"	2'-0"
A504	24	15'-6"	388	Str.			
A505	16	3'-6"	58	Str.			
A506	248	6'-0"	2250	Str.			
A507	16	5'-9"	96	1	2'-3"	1'-7"	2'-3"
A508	24	5'-5"	136	1	2'-3"	1'-3"	2'-3"
A509	16	5'-1"	85	1	2'-3"	1"	2'-3"
A510	8	4'-11"	42	1	2'-3"	9"	2'-3"
A511	8	4'-8"	39	1	2'-3"	6"	2'-3"
A512	64	7'-8"	704	1	3'-7"	8"	3'-7"
A513	56	12'-2"	711	Str.			
A601	184	16'-0"	4420	1	6'-0"	4'-2"	6'-0"
A602	120	9'-3"	1467	1	9'-2"	1'-2"	4'-2"
A603	104	6'-4"	2293	Str.			
A604	64	13'-8"	1314	Str.			
A801	4	12'-2"	130	2	10'-0"		
A802	12	8'-2"	262	2	6'-0"		
A803	4	19'-2"	183	2	17'-0"		
A804	12	10'-2"	326	2	8'-0"		
R504	32	9'-6"		Str.			
A514	92	4'-9"	456	1	3'-0"	11"	1'-0"
A515	320	3'-10"	1280	1	1'-0"	2'-0"	1'-0"

Total = Four Abutments = 16,844 lbs.

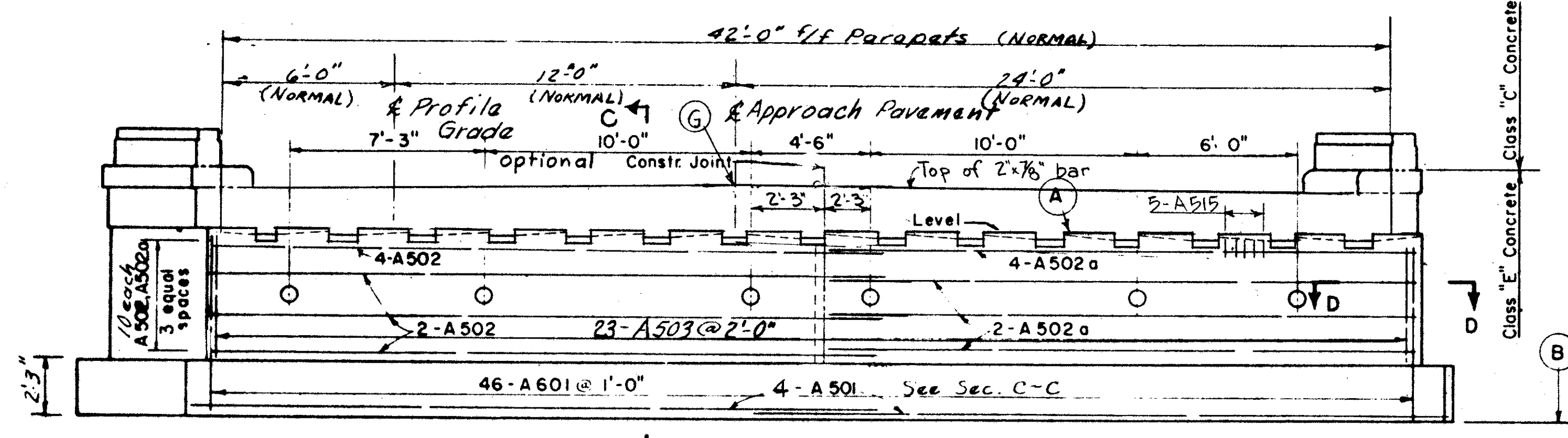
17084

All longitudinal reinforcing steel A502 & A502a except as otherwise shown

Slope facing S29.05

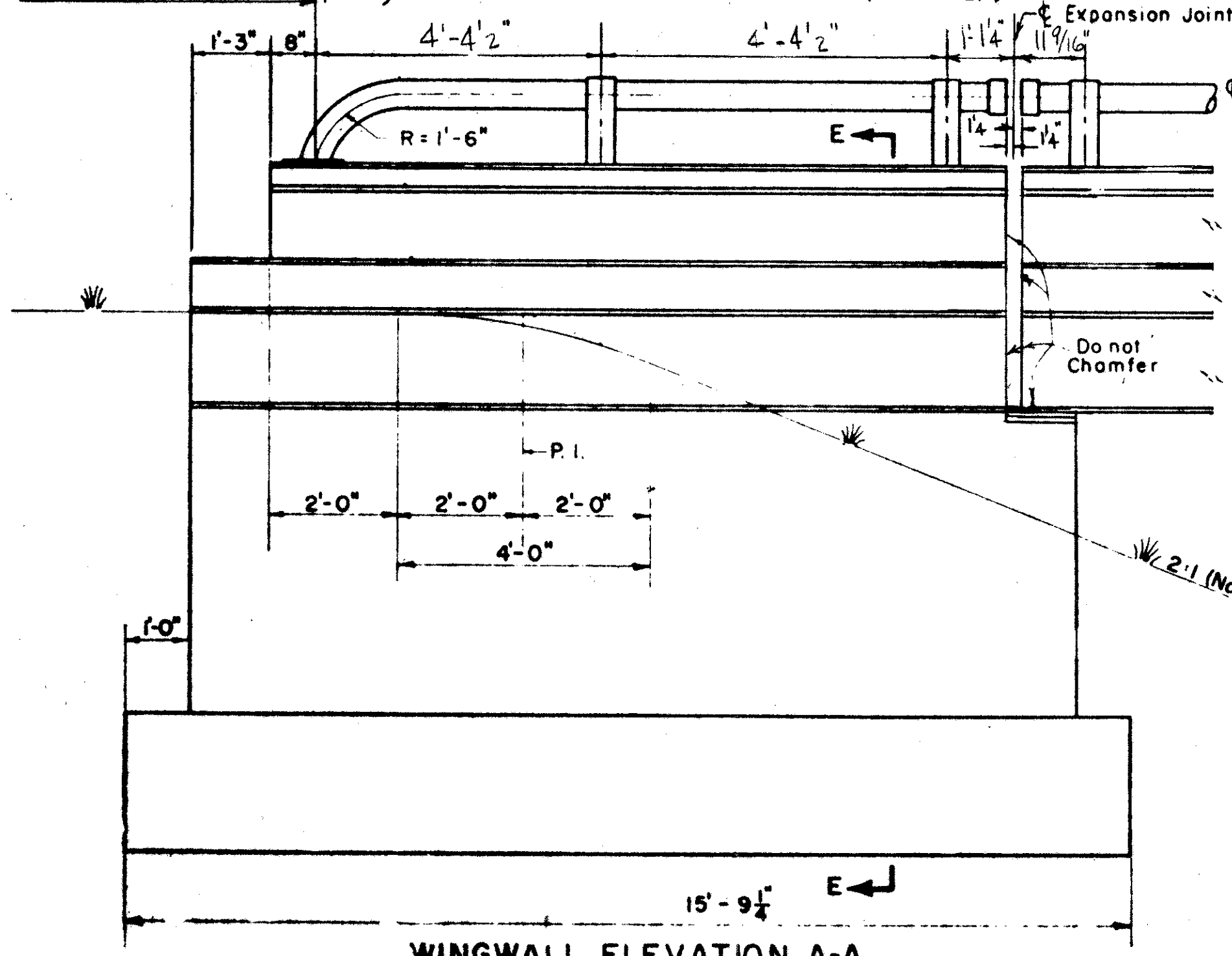


SECTION C-C (TYPICAL)

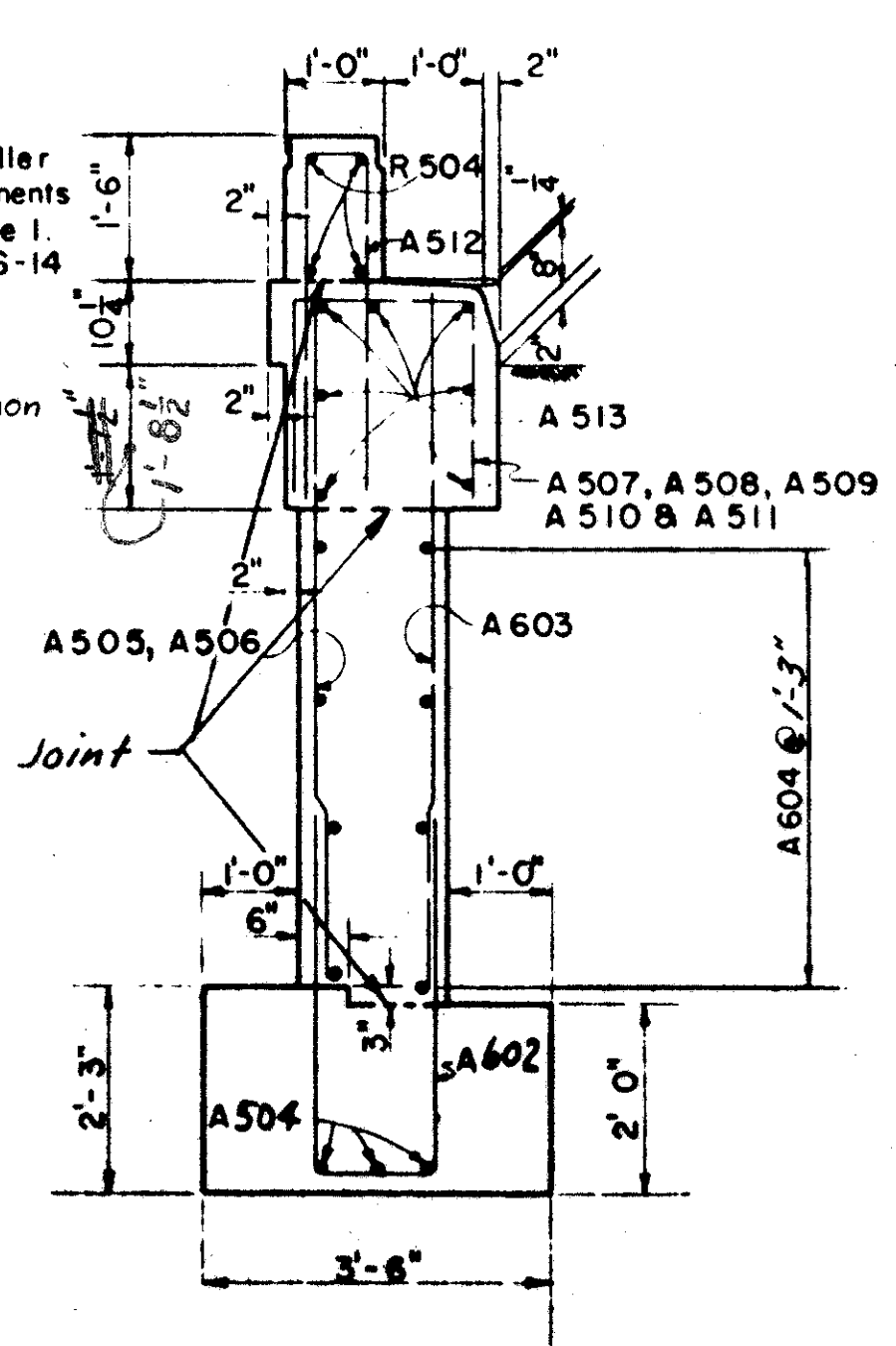


ELEVATION ABUTMENT 2 & 3 (TYPICAL)

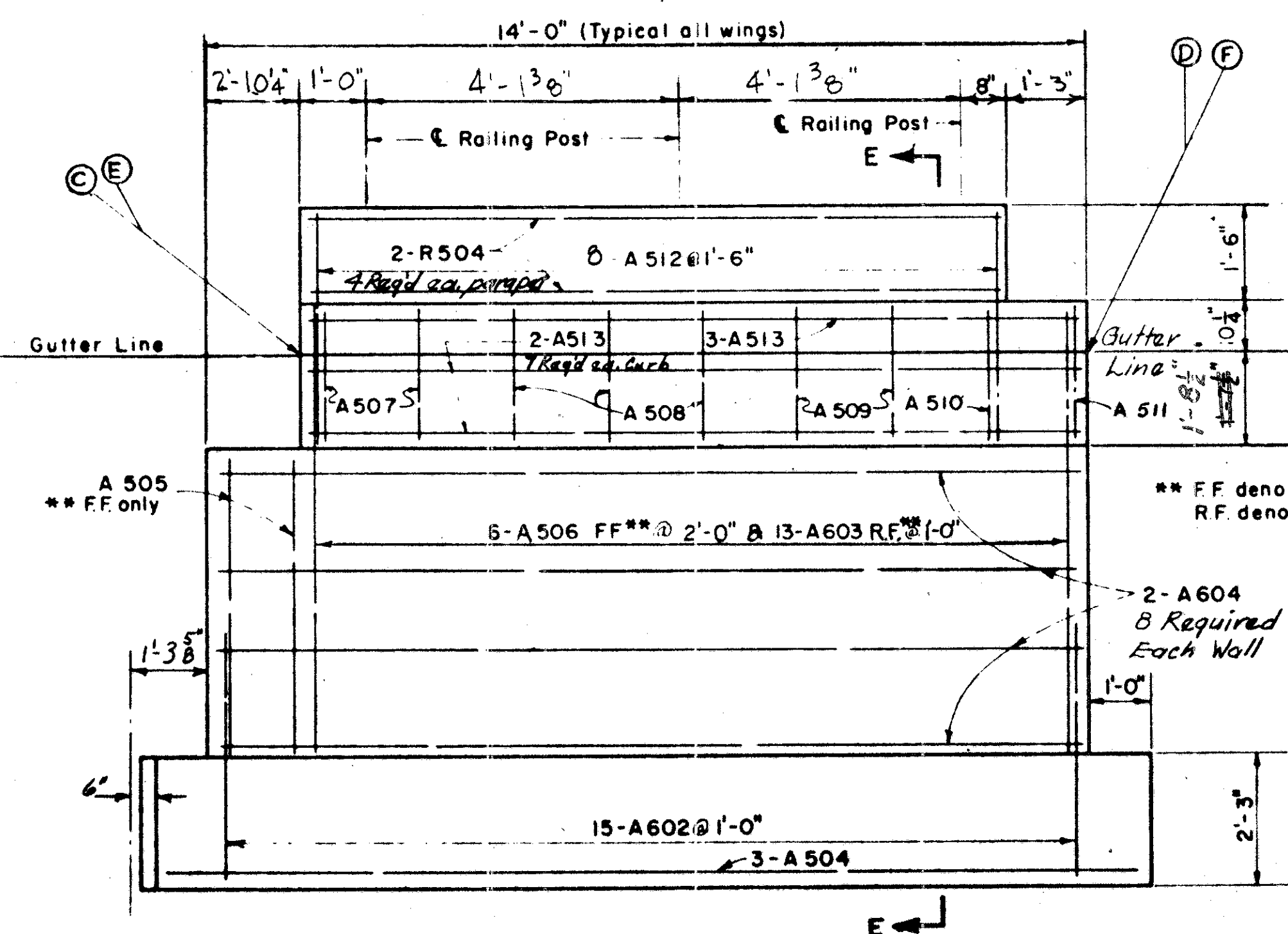
Pay Limit of Railing (Type A)



WINGWALL ELEVATION A-A
Showing Typical Slope Rounding & Expansion Joint between Abutment & Slab



SECTION E-E



WINGWALL ELEVATION B-B
Showing Typical Wingwall Reinforcement

* Include with Item S-14 for payment.
First digit in BAR MARK indicates the bar size. Example A501 is a #5 bar.

Max. Foundation Pressure 2.13 Tons/sq.ft.
A512 bar may be inverted for ease of erection.
For APPROACH SLAB DETAILS see (A5-1-54)

Revised 1-21-59

PREPARED BY
CAPITOL ENGINEERING ASSOCIATES, DILLSBURG, PA.
FOR

STATE OF OHIO
DEPARTMENT OF HIGHWAYS
DIVISION OF DESIGN AND CONSTRUCTION
BUREAU OF BRIDGES

ABUTMENT DETAILS
BRIDGE NO. LAK-2-1006
RELOC. S.R.2 OVER S.R.615
LAKE COUNTY

STA. 402 + 61.96

DESIGNED	D.R.T.	DRAWN	F.W.E.	TRACED		CHECKED		REVISED DATE	4-17-59	REVISED	4-7-59
----------	--------	-------	--------	--------	--	---------	--	--------------	---------	---------	--------