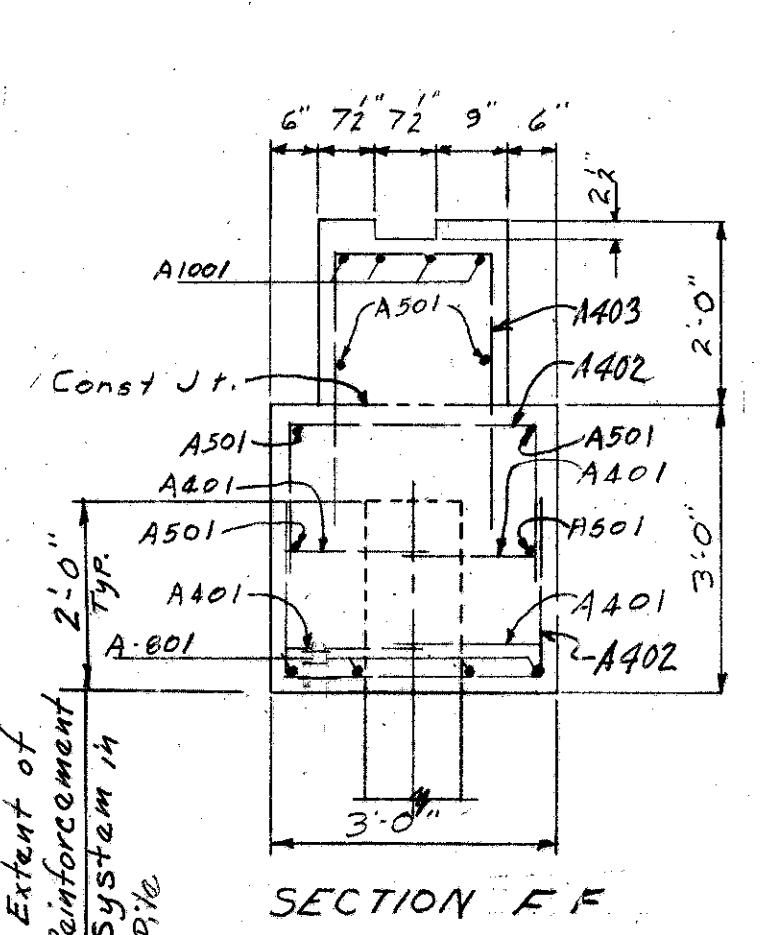
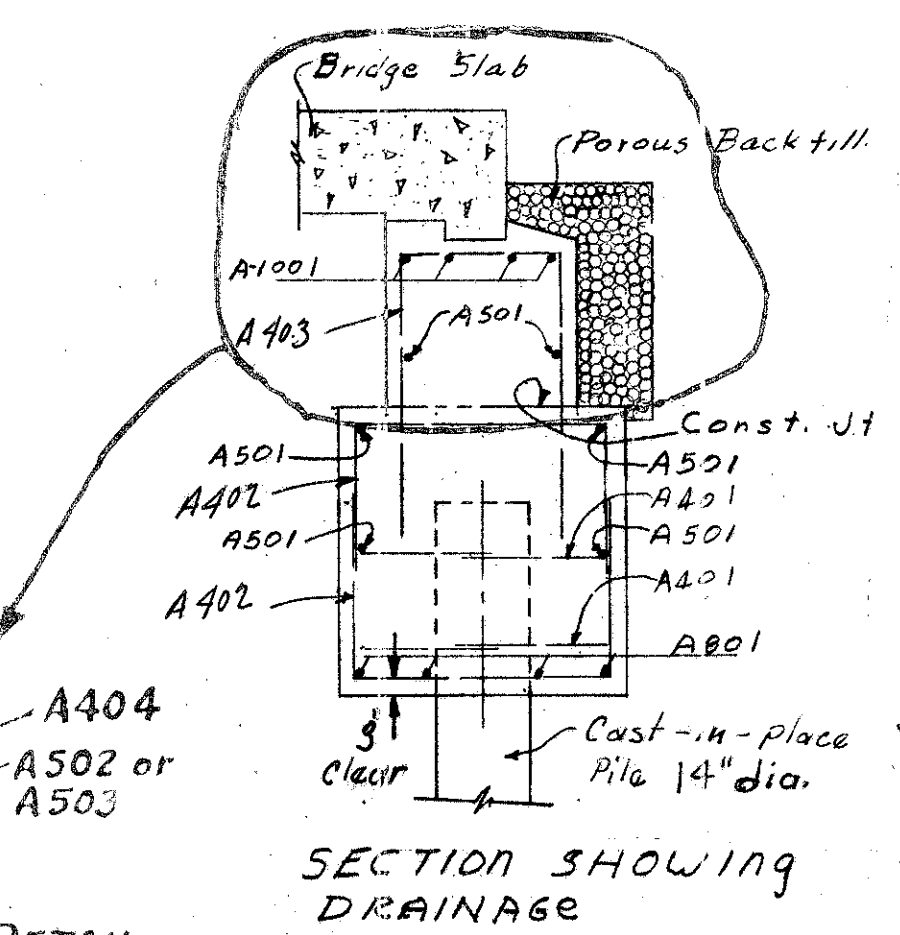
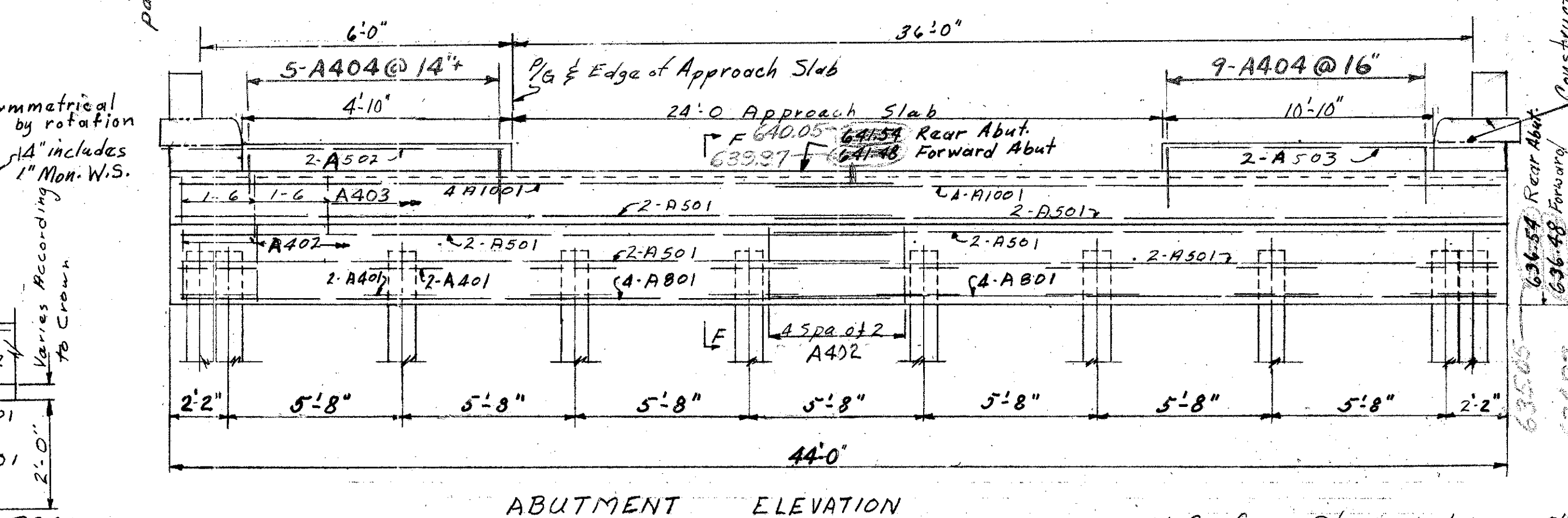
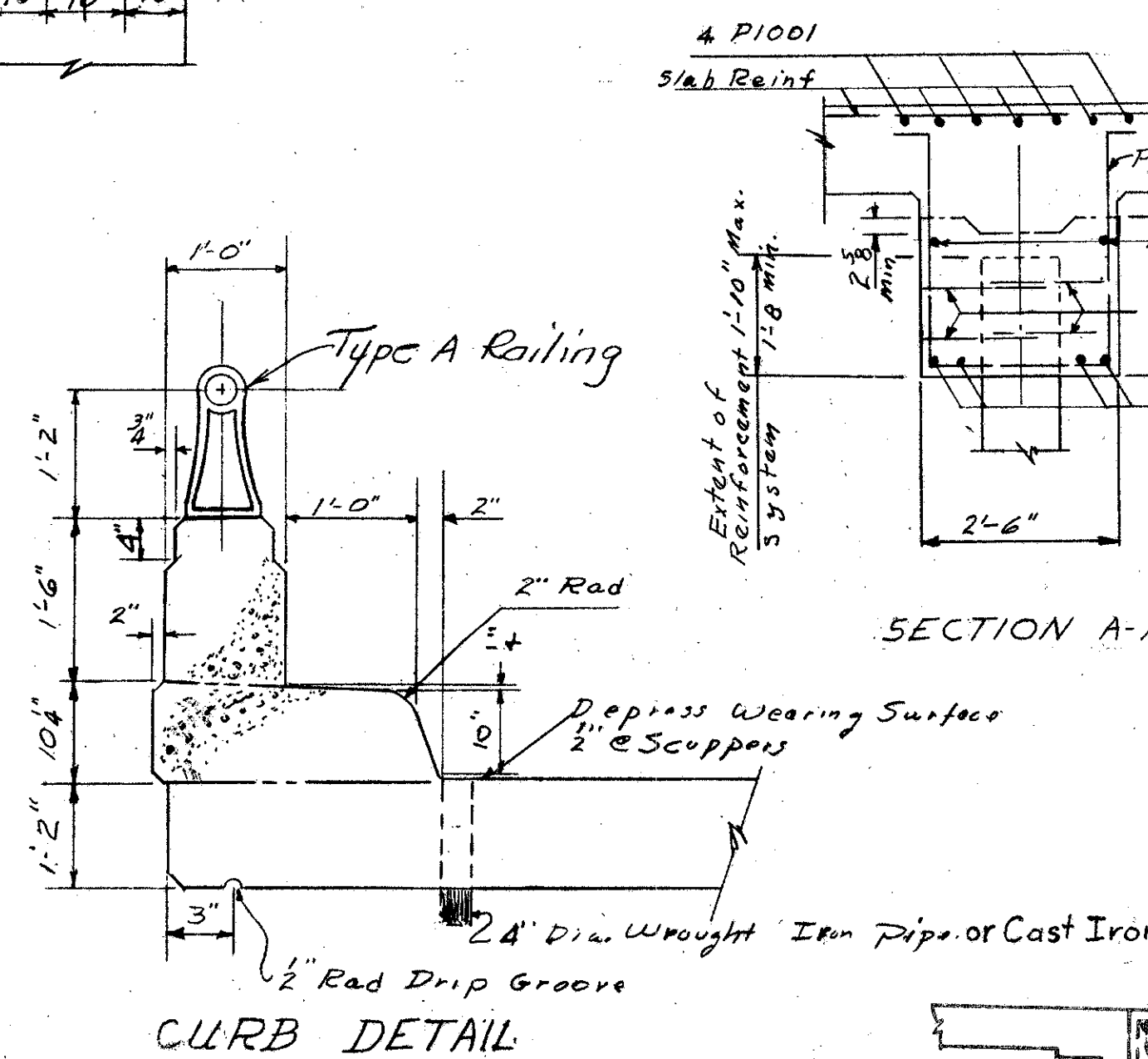
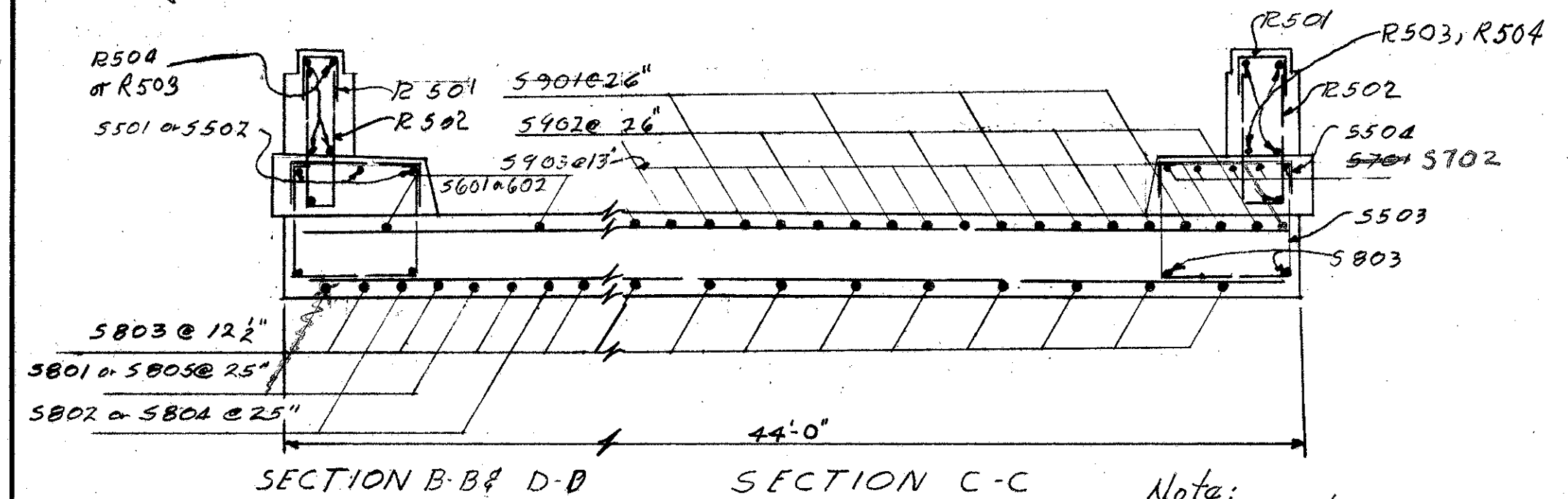
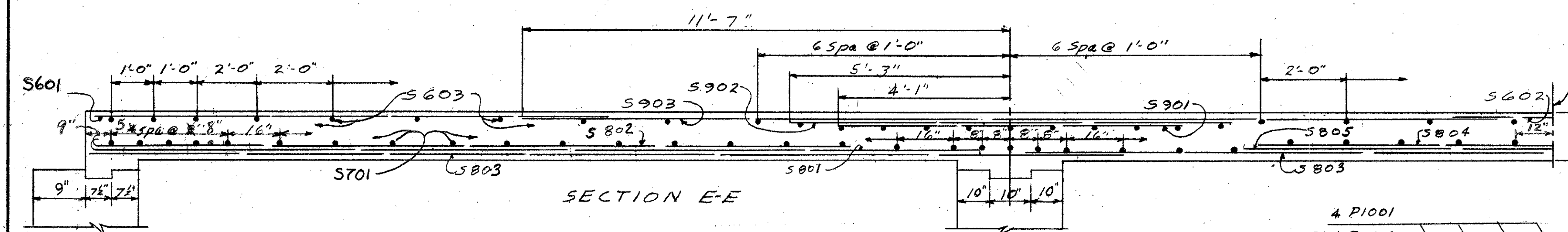
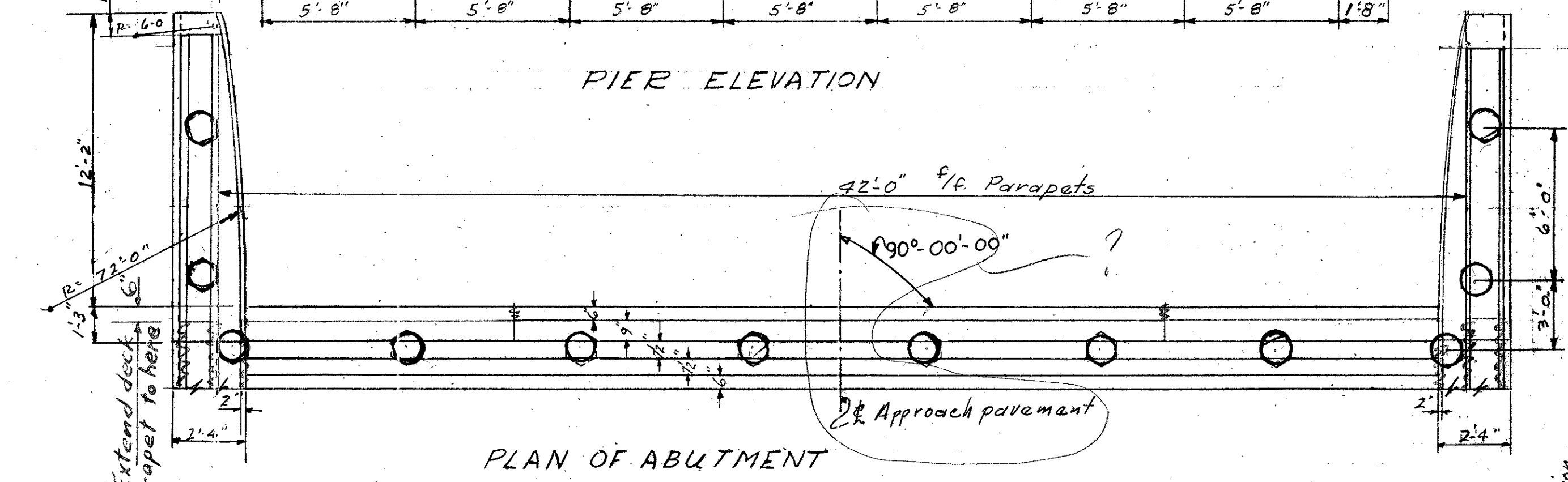
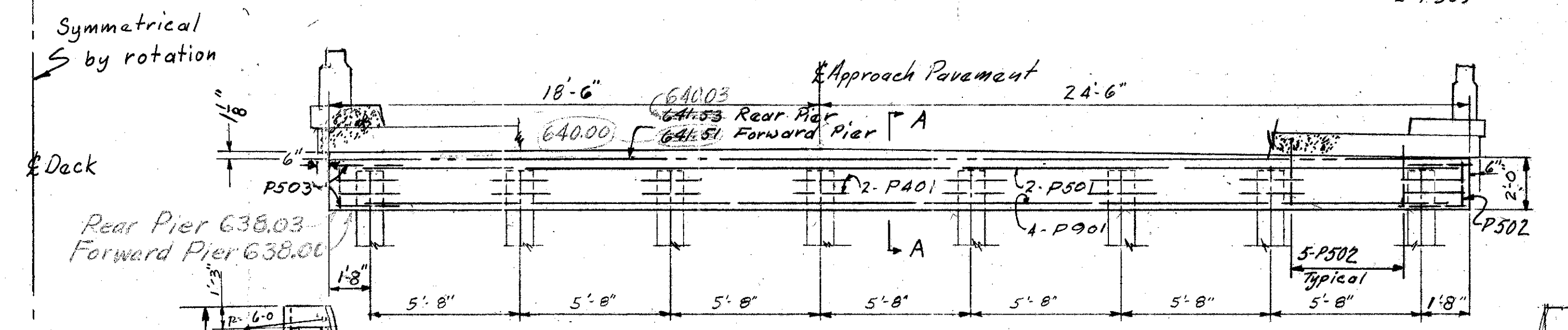
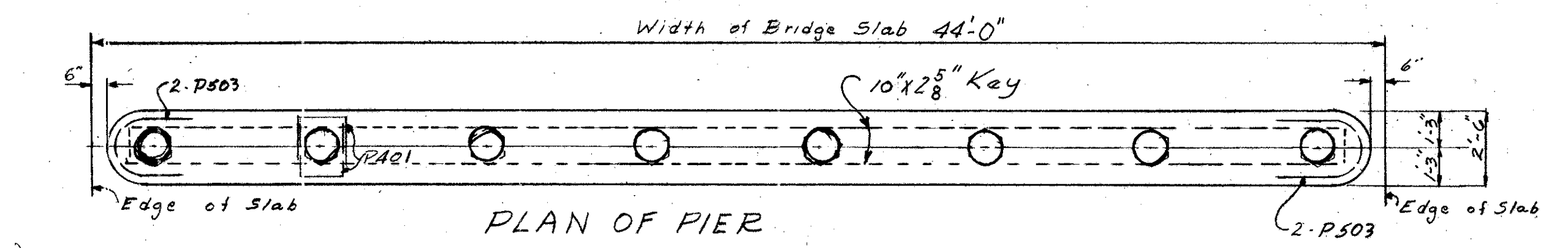
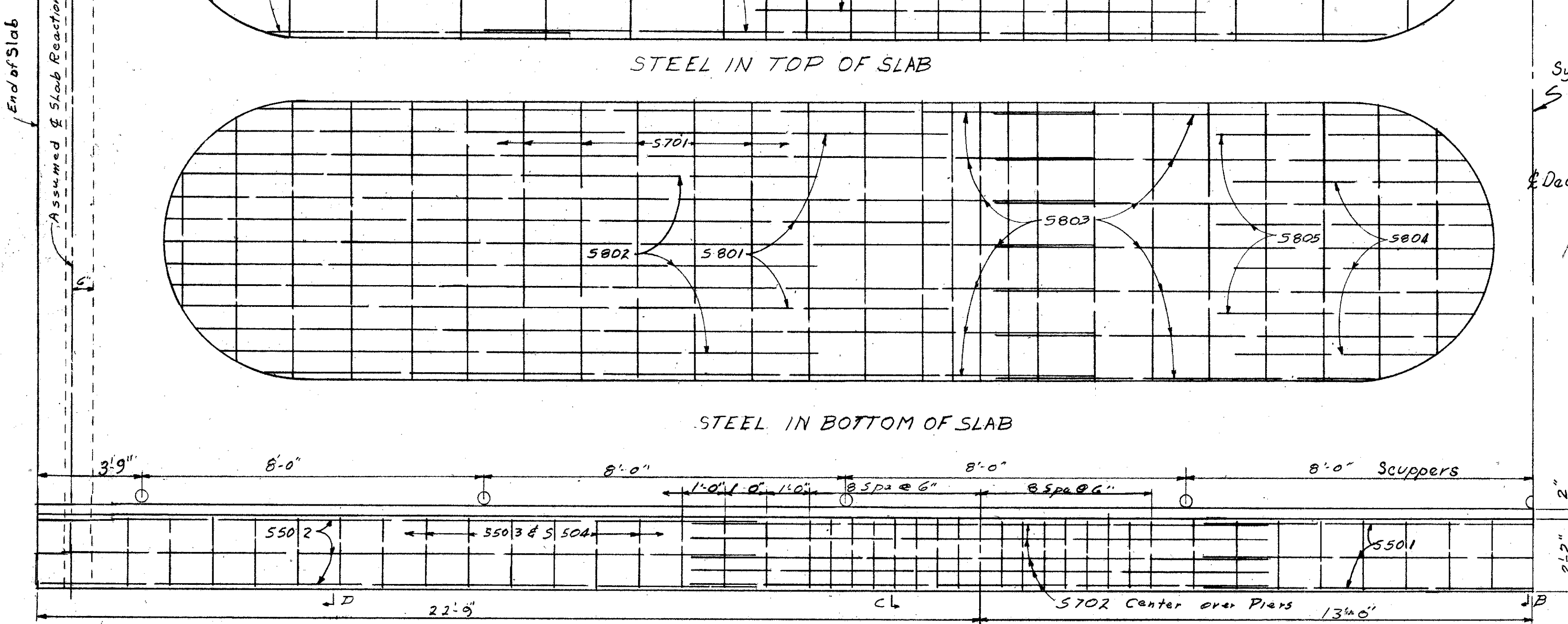
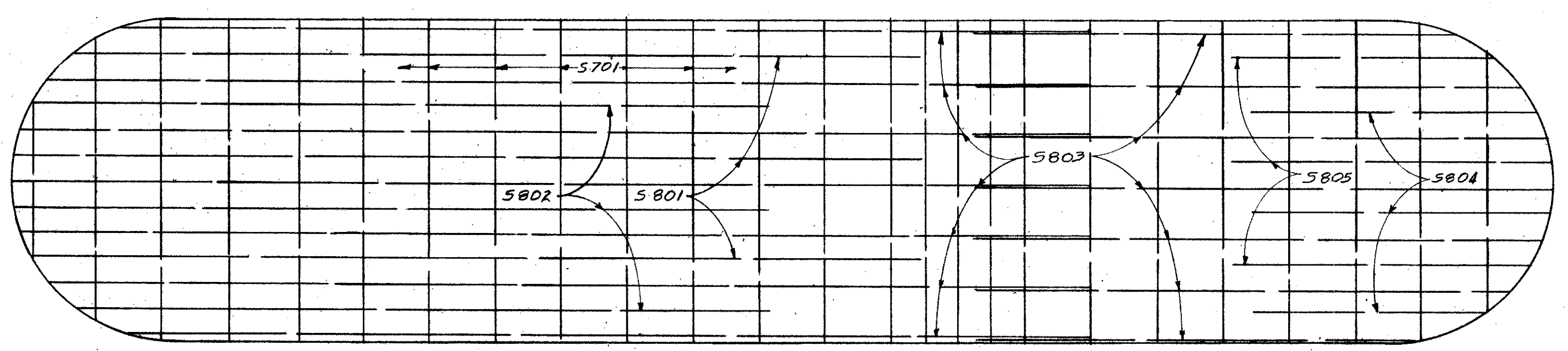
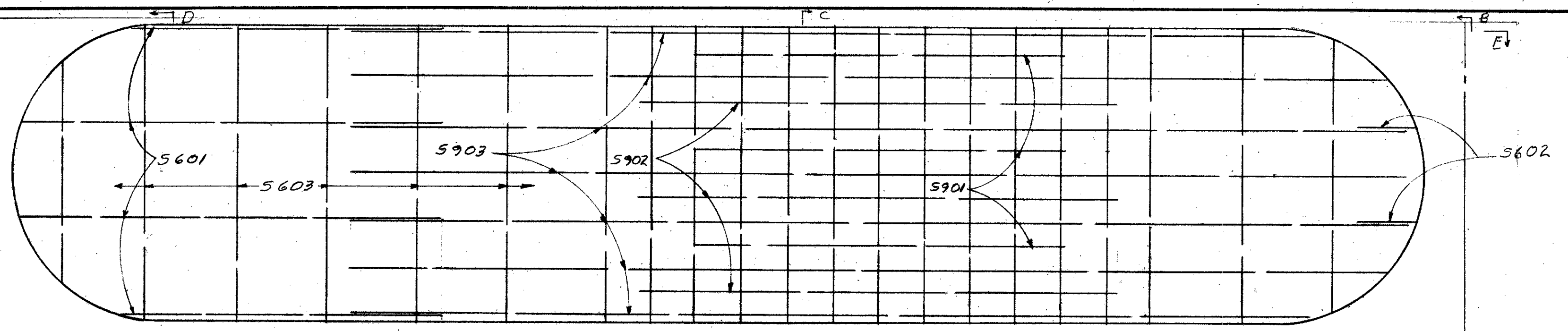


LAKE COUNTY
SEC. LAK-2-7.39

MICROFIL
DEC 5 1988



All Reinforcing Steel shall have 2" of cover from all faces, except as otherwise shown.
All Piles are Cast-in-Place Reinforced Concrete, 14" Butt dia.
Pile Casings to extend in to all Caps & Min. of 14".
Both Structures are identical.
PREPARED BY CAPITOL ENGINEERING ASSOCIATES

STATE OF OHIO DEPARTMENT OF HIGHWAYS DIVISION OF DESIGN AND CONSTRUCTION BUREAU OF BRIDGES				
BRIDGE DETAILS				
BRIDGE NO. LAK-2-0757 S.R. 2 OVER NEWELL CREEK LAKE COUNTY				
STA. 299+79.00				
DESIGNED TEB	DRAWN TEB	TRACED TEB	CHECKED TEB	REVISED DATE
9-30-58	10-1-58			2-16-59 4-1-59