

FED. RD. DIVISION	STATE	PROJECT
2	OHIO	F-329 (16)

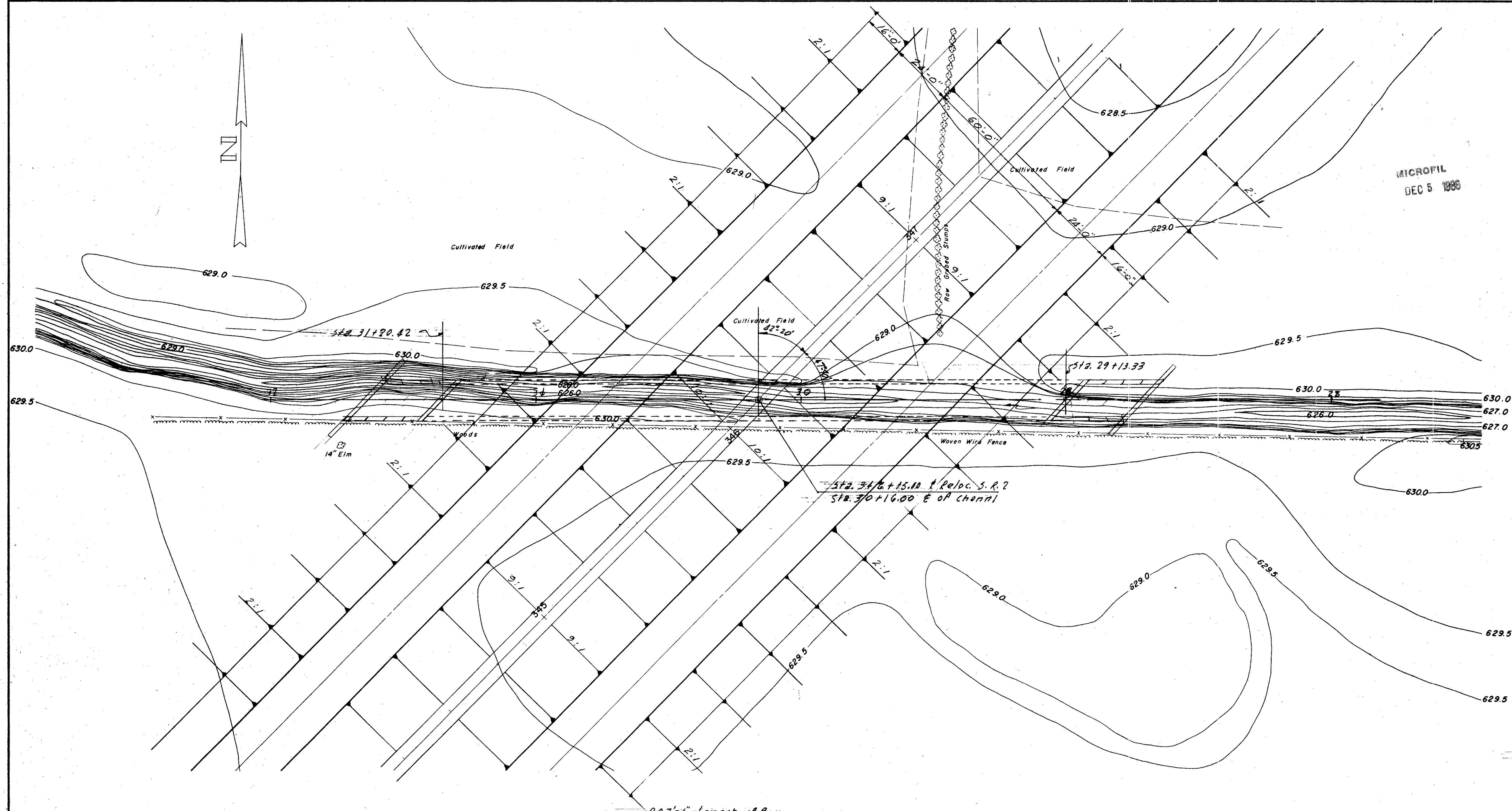
230  
268

LAKE COUNTY  
LAK-2-7.39  
SHEET 231 NOT USED

FOUNDATION SOUNDINGS

Foundation design & foundation quantities are based on a study of borings & soil samplings made at the site. This sounding information may be inspected in the Interstate Projects Office and in Division Office, but the state does not guarantee the accuracy thereof.

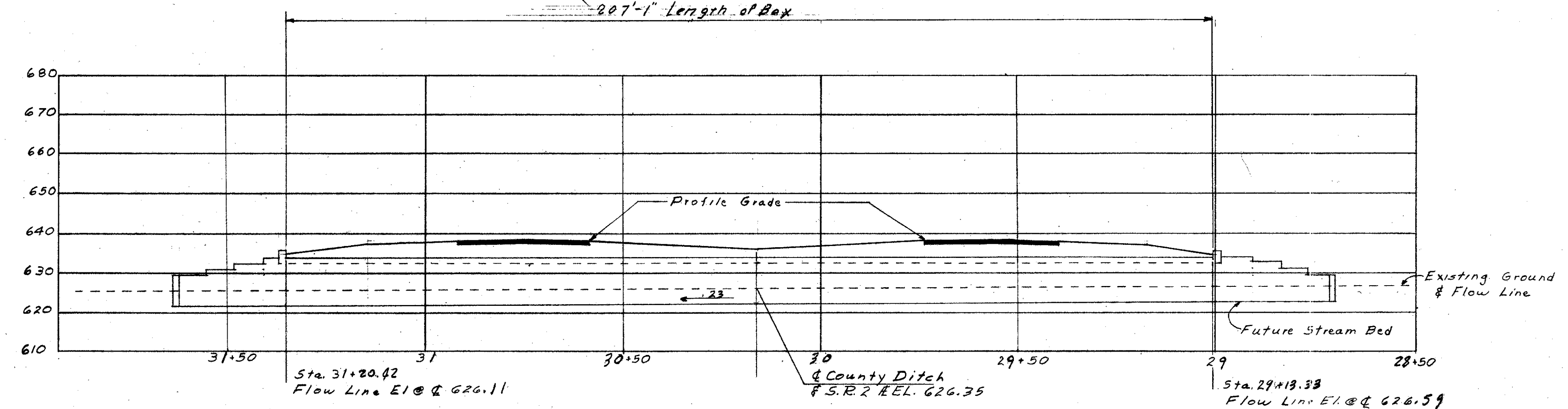
MICROFIL  
DEC 5 1986



PROPOSED STRUCTURE

TYPE	Culvert-Slab Top
CLEAR SPAN	12.0'
CLEAR OPENING	120 Sq Ft
DRAINAGE AREA	940 Acres
DESIGN FLOW	Q <sub>25</sub> 443 CF Per Ft
SKEW	42° 20' 00"
ALIGNMENT	Tangent

MAX. BEARING PRESSURE 2 1/2 Tons / sq. Ft.



PROFILE ALONG COUNTY DITCH

PREPARED BY CAPITOL ENGINEERING ASSOCIATES, DILLSBURG, PA. FOR					
STATE OF OHIO DEPARTMENT OF HIGHWAYS DIVISION OF DESIGN AND CONSTRUCTION BUREAU OF BRIDGES					
SITE PLAN BRIDGE NO. LAK-2-0845 RELOC. SR. 2 OVER COUNTY DITCH LAKE COUNTY STA. 346 + 15					
DESIGNED	DRAWN TEB 95sep758	TRACED	CHECKED	REVISED DATE	REVISED