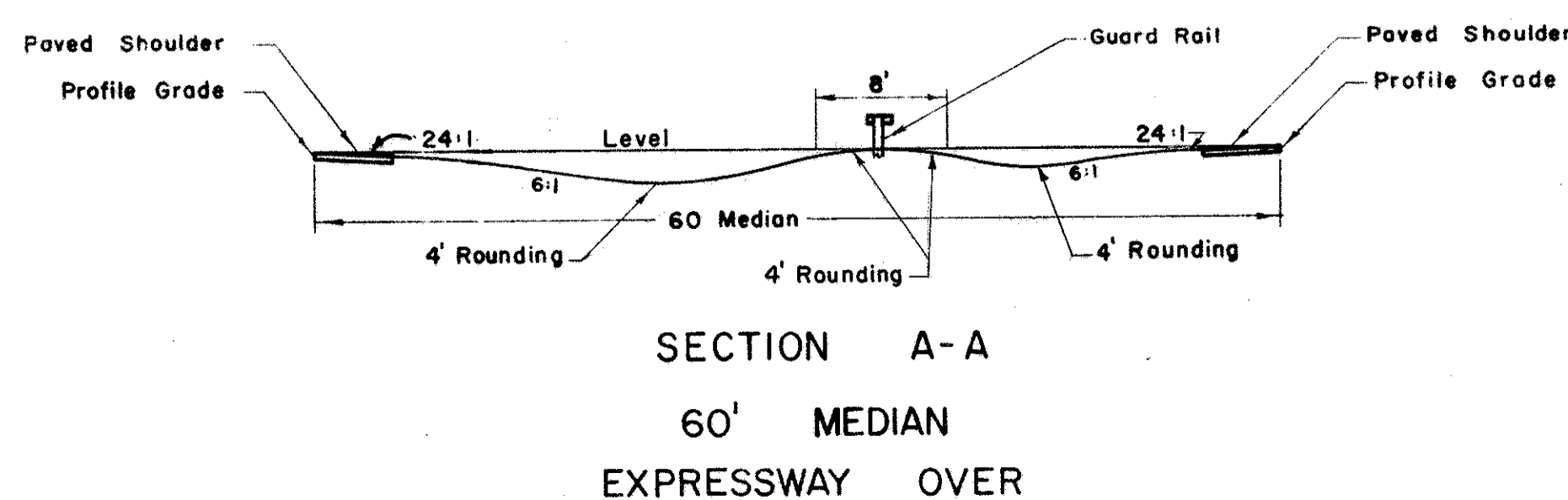
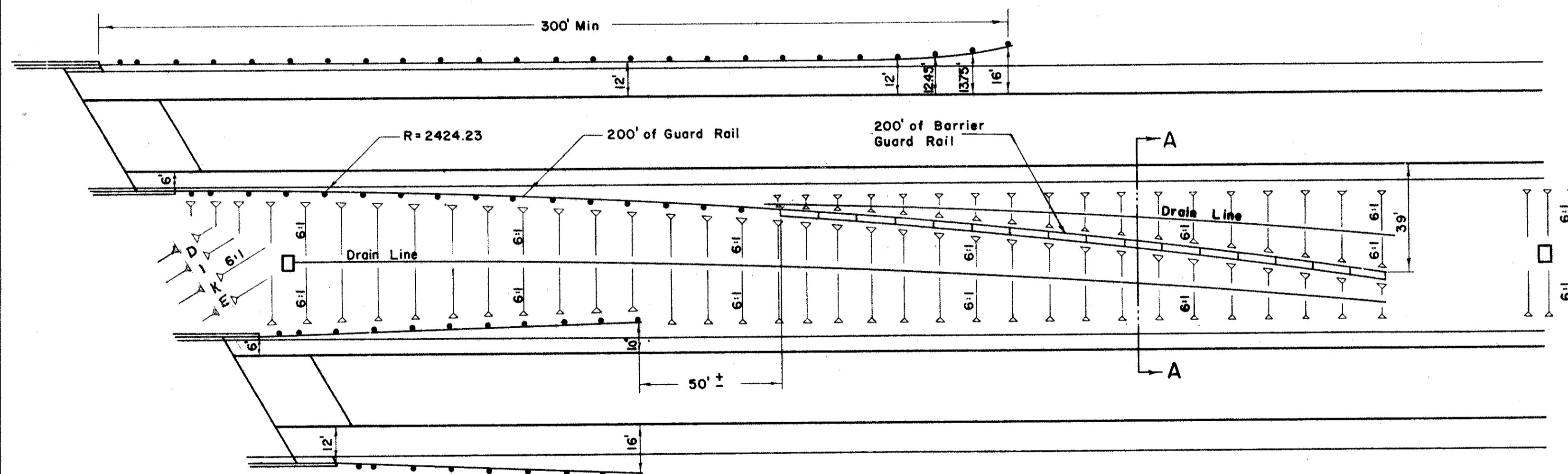
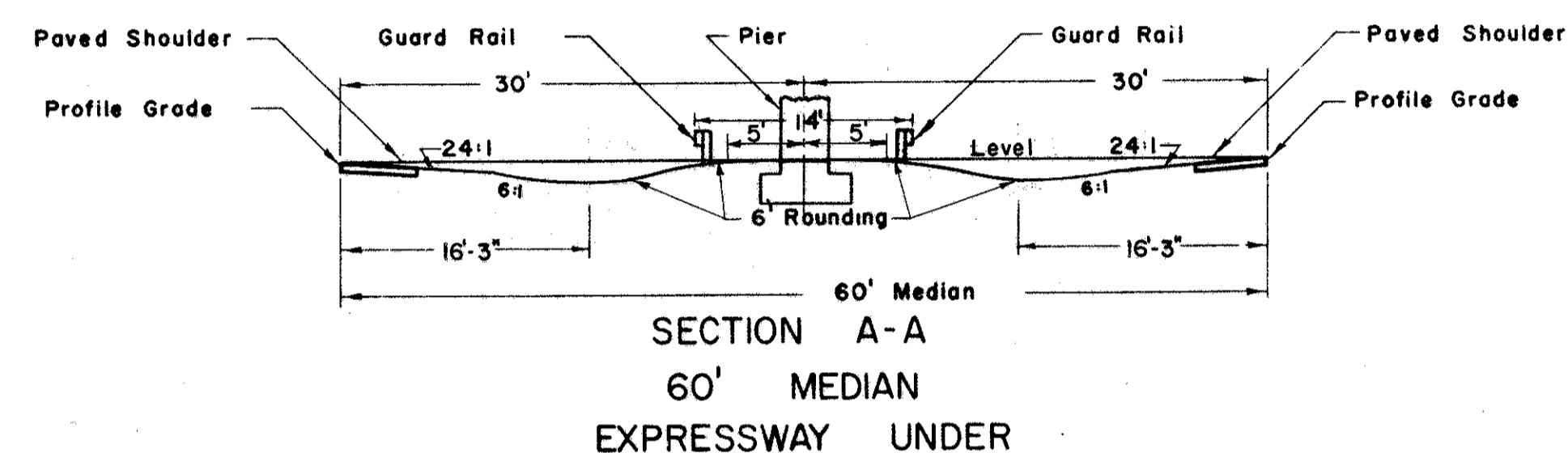
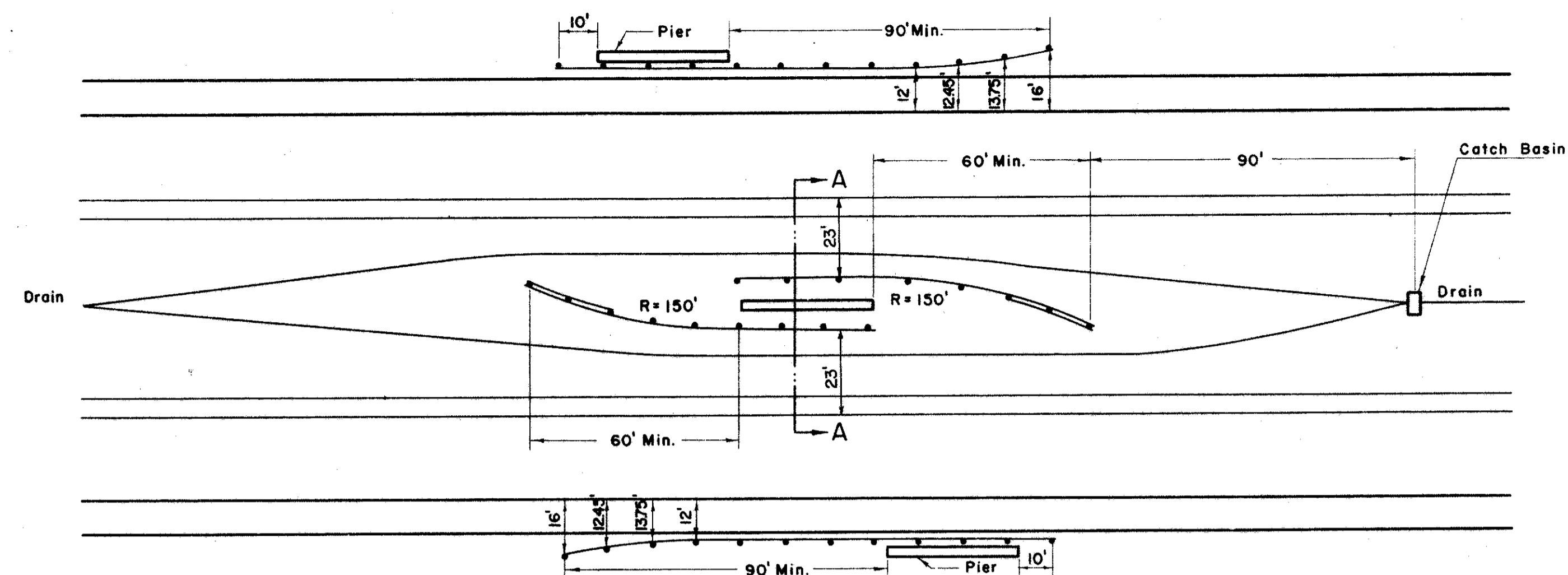


LAKE COUNTY  
LAK-2-7.39



60' MEDIAN

DISTANCE BETWEEN EDGE OF PAVEMENT AND FACE OF GUARD RAIL			
POST	OFFSET	POST	OFFSET
1/2	6.01	17	15.31
1	6.03	18	16.44
2	6.10	19	17.63
3	6.29	20	18.89
4	6.52	21	20.20
5	6.81	22	21.59
6	7.16	23	23.03
7	7.58	24	24.55
8	8.06	25	26.13
9	8.61	26	27.77
10	9.22	27	29.47
11	9.90	28	31.24
12	10.64	29	33.08
13	11.45	30	34.98
14	12.32	31	36.94
15	13.25	32	39.00
16	14.25		

NOTE

GENERAL - Design details shown hereon shall govern the construction of guard rail at structures and piers unless otherwise shown on the plans.

DIKE shall be provided at each end of each pair of structures.

Top of rail shall be 24" above profile grade line throughout length of rail.

DETAIL OF GUARD RAIL  
AT STRUCTURES