

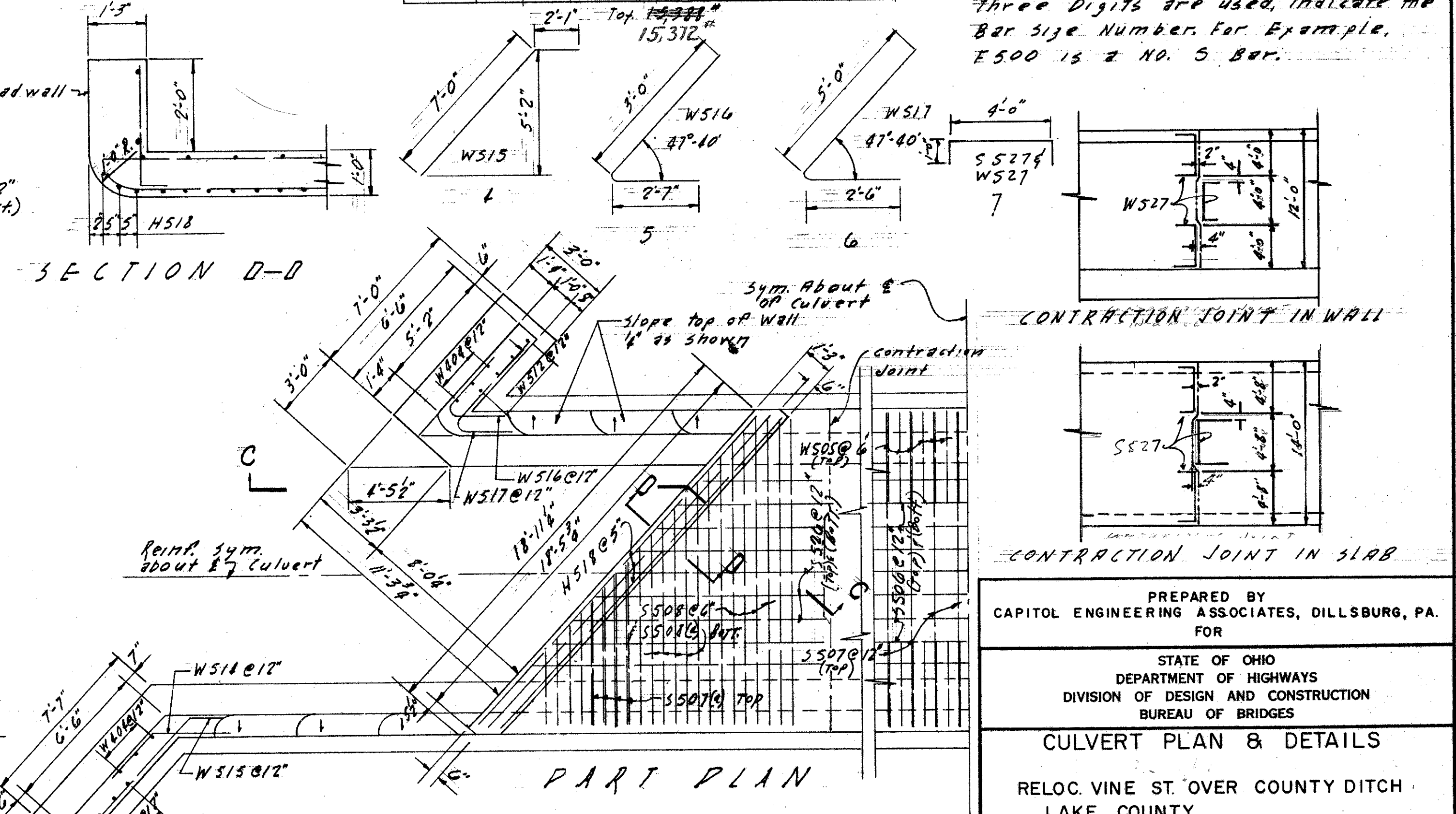
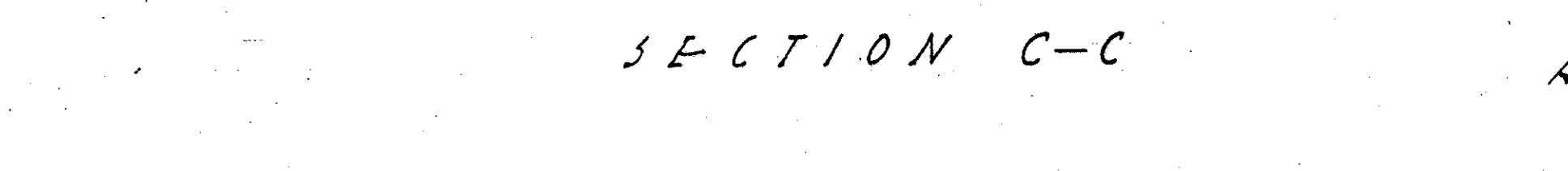
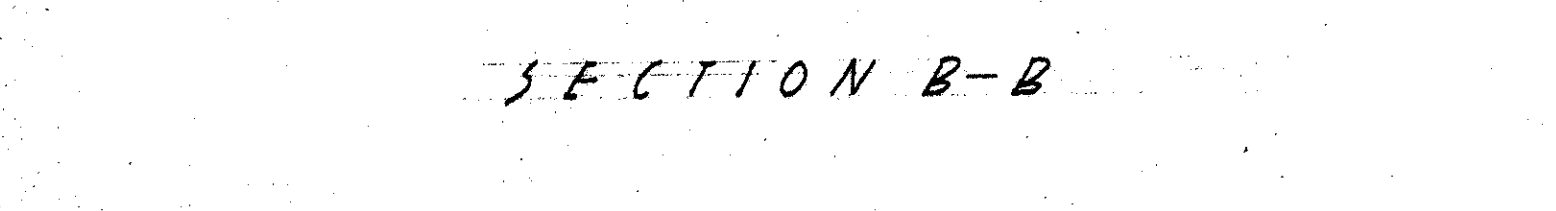
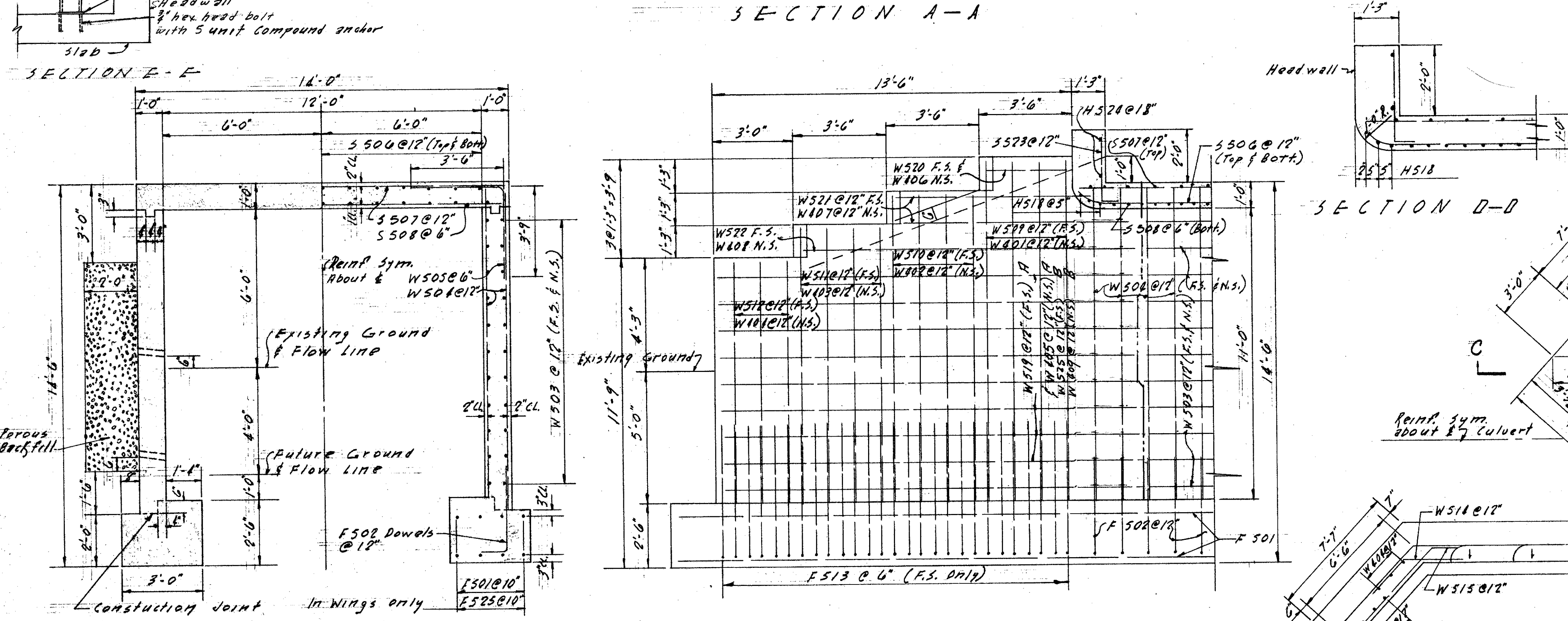
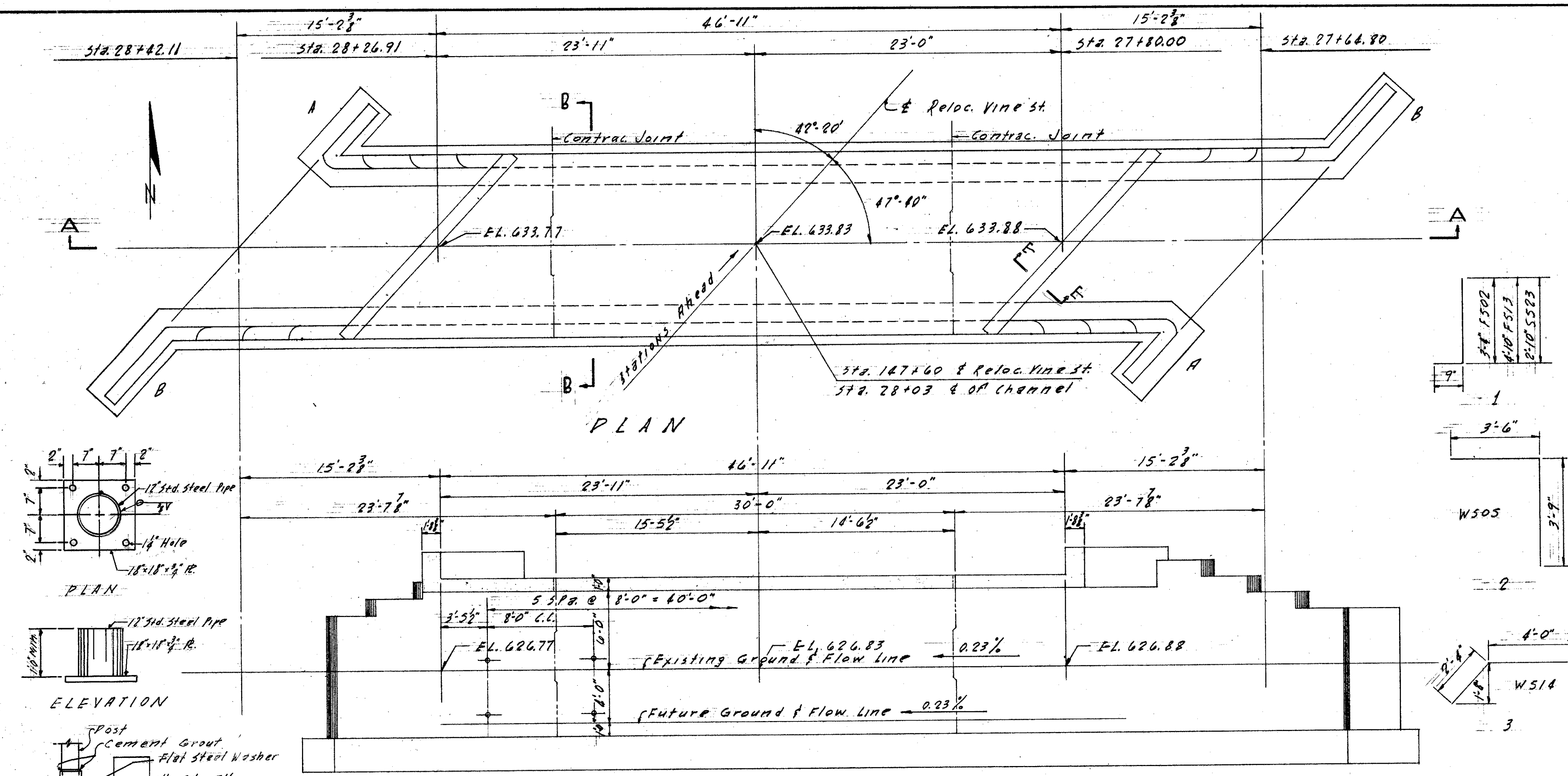
LAKE COUNTY  
SEC. LAK.-2-7.39

REINFORCING LIST									
MARK NO.	TOT. LENGTH	WEIGHT	TYPE	"A"	"B"	"C"			
W401	4	16	12'-9"	136	STR				
W402	4	16	11'-6"	123	STR				
W403	4	16	10'-3"	109	STR				
W404	6	24	9'-0"	144	STR				
W405	9	18	16'-0"	192	STR				
W406	1	4	4'-0"	11	STR				
W407	2	8	8'-6"	45	STR				
W408	1	4	12'-3"	33	STR				
W409	9	18	28'-0"	336	STR				
F501	24	48	27'-0"	1351	STR				
F502	48	96	9'-11"	391	STR				
F513	27	108	5'-5"	610	STR				
F525	8	32	6'-0"	200	STR				
S527	6	6	6'-0"	37	STR				
W527	12	12	6'-0"	71	STR				
W503	22	44	29'-8"	1370	STR				
W504	96	192	11'-9"	2353	STR				
W505	95	190	7'-2"	1418	STR				
W509	4	16	12'-9"	213	STR				
W510	4	16	11'-6"	192	STR				
W511	4	16	10'-3"	171	STR				
W512	7	28	9'-0"	263	STR				
W514	9	18	2'-3"	118	STR				
W515	9	18	9'-0"	169	STR				
W516	9	18	5'-6"	103	STR				
W517	9	18	7'-6"	161	STR				
W519	9	18	16'-0"	300	STR				
W520	1	4	4'-0"	17	STR				
W521	2	8	8'-6"	71	STR				
W522	1	4	12'-3"	51	STR				
W525	9	18	28'-0"	505	STR				
S526	26	52		483	STR				
S506	13	26	29'-8"	810	STR				
S507	48	48	13'-6"	676	STR				
S507A	9	18		156	STR				
S508	96	96	13'-6"	1352	STR				
S508A	19	38		327	STR				
S523	14	38	3'-5"	136	STR				
H518	3	6	18'-0"	113	STR				
H524	2	4	18'-0"	75	STR				

ESTIMATED QUANTITIES		
ITEM	TOTAL UNIT	DESCRIPTION
E-2	152 CU.YD.	UNCLASSIFIED EXCAVATION
S-1	20 CU.YD.	CLASS "C" CONCRETE - SLAB
S-1	111 CU.YD.	CLASS "E" CONC. - FTG. & WALLS
S-4	15,372 LB.	REINFORCING STEEL
S-29	85 CU.YD.	POROUS BACKFILL

15,372

**GENERAL NOTES**  
 CONCRETE: In slab, class C; in walls and footing, class E.  
 WEEP HOLES: 3" dia. Weep Holes placed 6" above normal water level.  
 POROUS BACKFILL: Full length of walls and wings (shall be placed not higher than 2'H before slab is in position).  
 N.S. Indicate Near Side.  
 F.S. Indicate Far Side.  
 BAR SIZE: Is indicated in the Bar Mark. The first digit, where three digits are used, indicate the Bar Size Number. For example, E500 is a NO. 5 Bar.



PREPARED BY  
CAPITOL ENGINEERING ASSOCIATES, DILLSBURG, PA.  
FOR

STATE OF OHIO  
DEPARTMENT OF HIGHWAYS  
DIVISION OF DESIGN AND CONSTRUCTION  
BUREAU OF BRIDGES

CULVERT PLAN & DETAILS  
RELOC. VINE ST. OVER COUNTY DITCH  
LAKE COUNTY  
STA. 147+60

DESIGNED	DRAWN	TRACED	CHECKED	REVISED DATE	REVISED
P.J.P.	P.J.P.				4-1-59