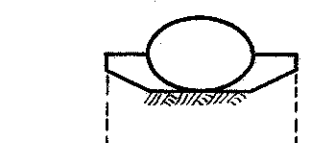
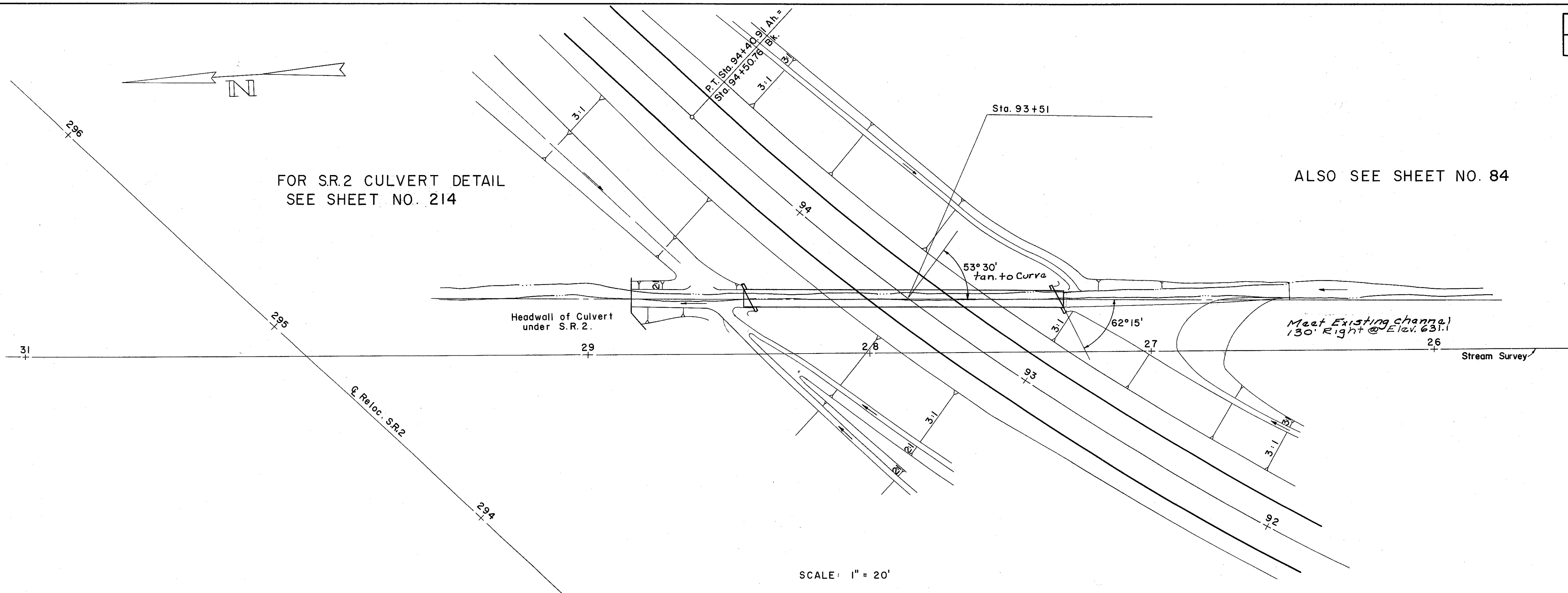


ALSO SEE SHEET NO. 84

FOR SR.2 CULVERT DETAIL  
SEE SHEET NO. 214



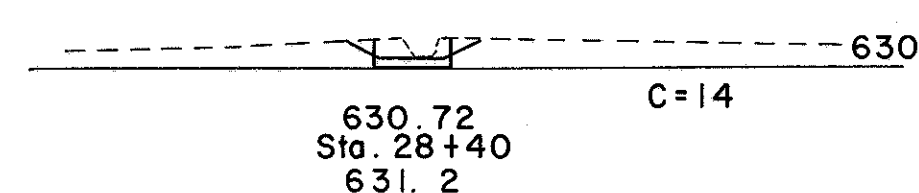
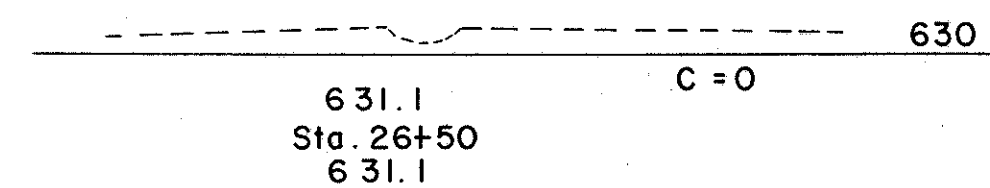
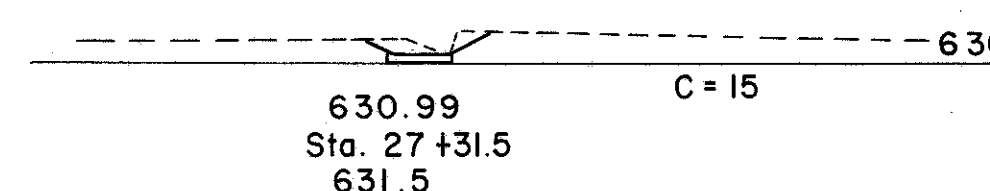
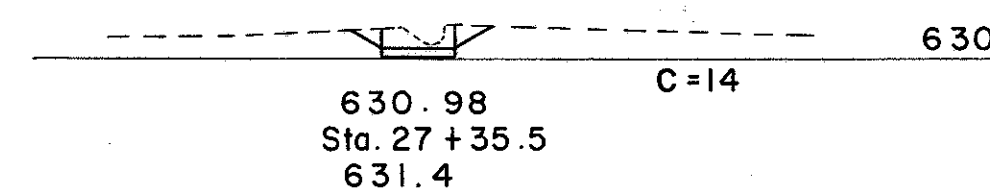
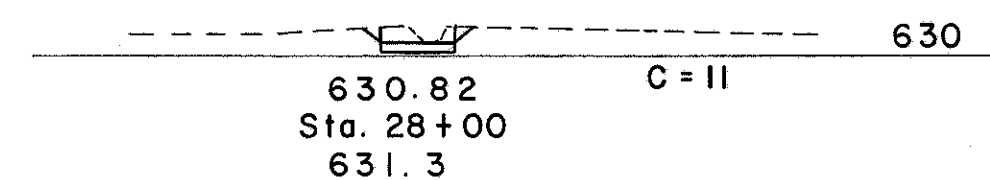
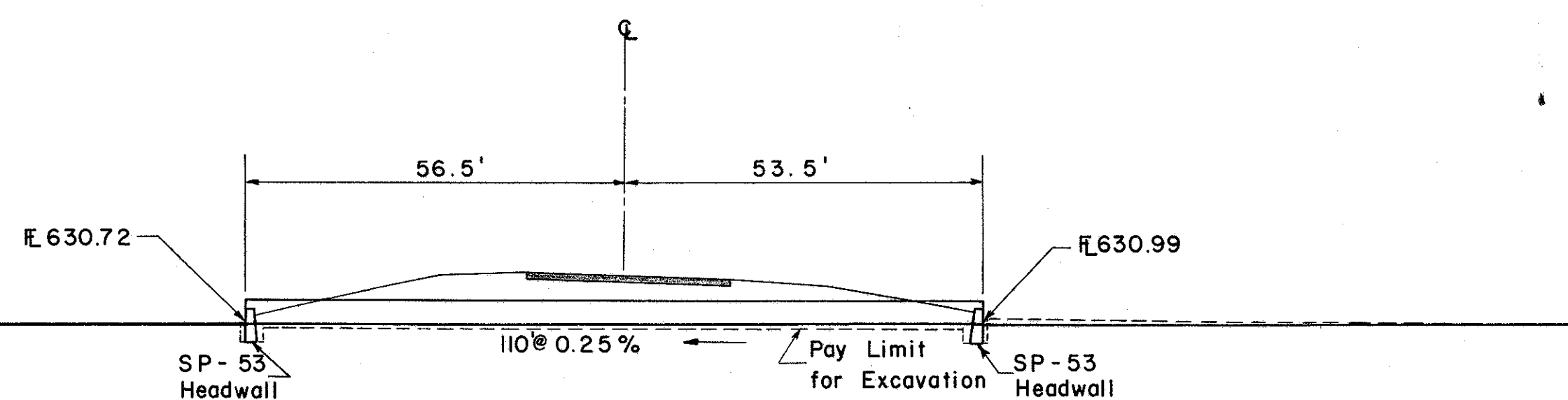
HEAD WALL  
FRONT VIEW



SCALE: 1" = 20'

AREA = 105 AC.  
Q25 = 57 C.F.S.

HEADWATER = 2.7 FT.  
OUTLET VELOCITY = 4.7 FPS.

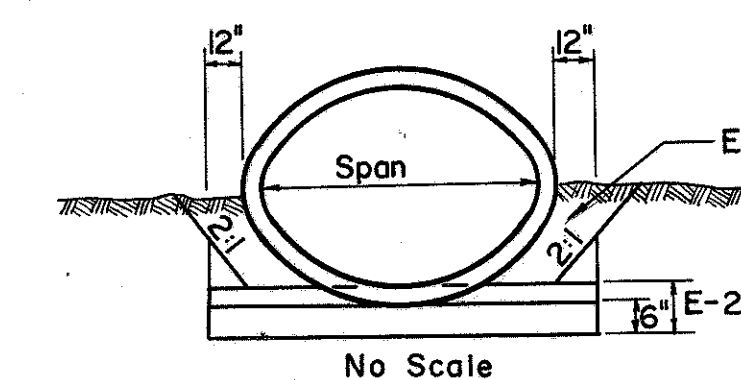


ESTIMATED QUANTITIES

E-2	Excavation for Structures	59 Cu. Yd.
E-3	Channel Excavation	23 Cu. Yd.
S-1	Concrete for Structure Class "E"	4.43 Cu. Yd.
S-27	68" x 43" Pipe for Roadway Culverts Sec. M-206.6 (b)	110 Lin. Ft.

CULVERT DATA

TYPE : 68" x 43" S-27 Sec. M-206.6 (b)  
 WORK REQUIRED : Build a 68" x 43" Pipe Culvert  
 with SP-53 Headwalls  
 Rt. and Lt. Excavate  
 Channel on Rt.



No Scale