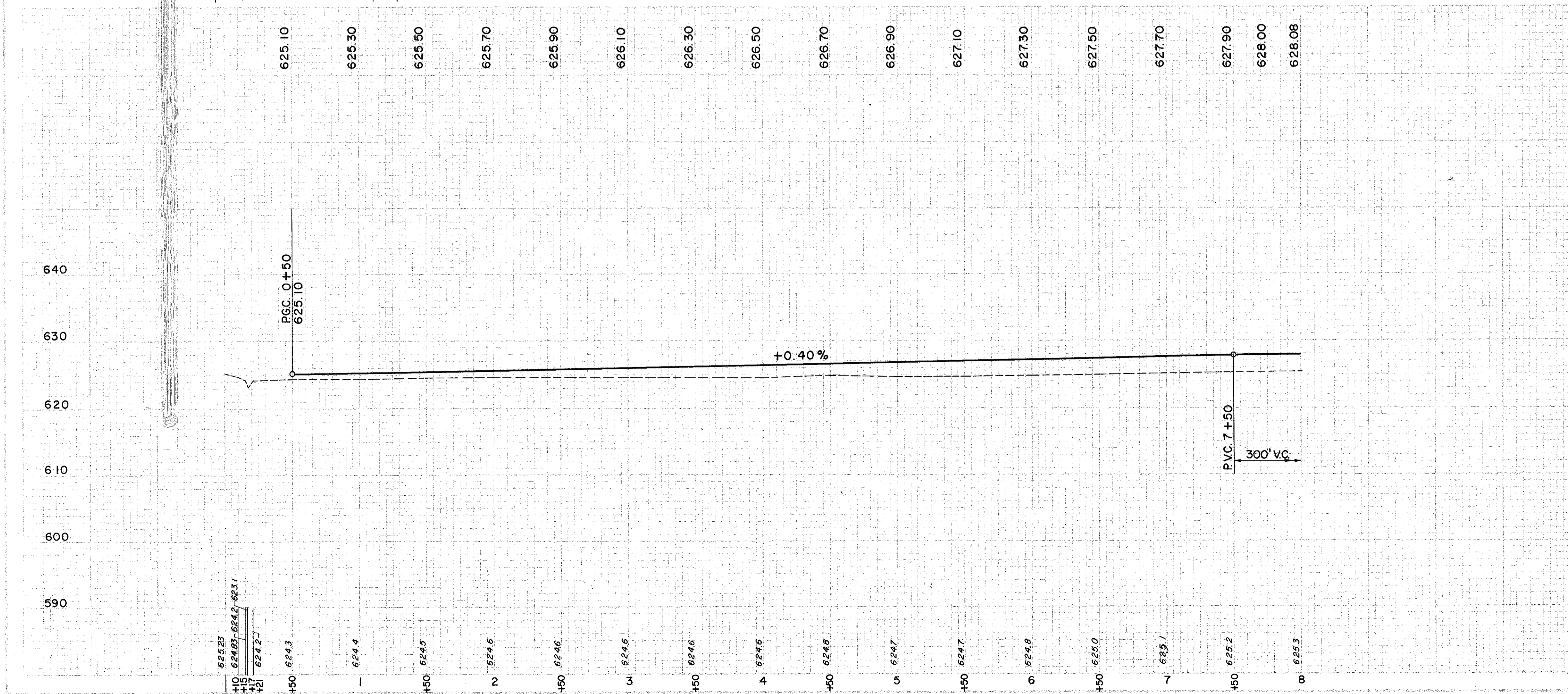
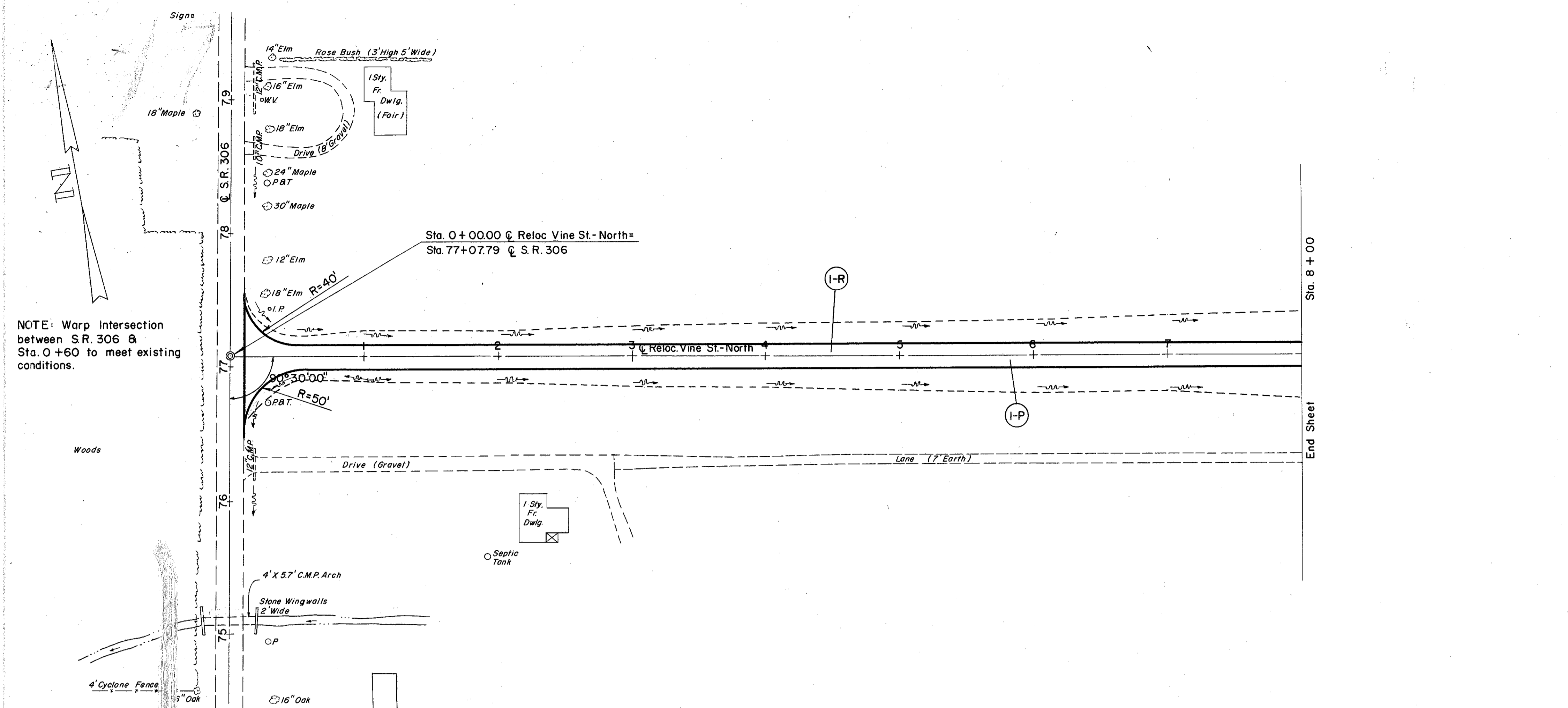


LAKE COUNTY  
LAK-2-7.39

NOTE: Warp Intersection between S.R. 306 & Sta. 0 +60 to meet existing conditions.



Sta. 0+00.00 C. Reloc. Vine St. - North =  
Sta. 77+07.79 C. S.R. 306

(P) PAVEMENT

REF. NO.	STATION	SIDE	THICKNESS	TYPE	C.Y.
I-P	0+10 TO 32+50		4"	STONE UNDER DRAIN SUB-BASE	767
					889

(R) ROADWAY

REF. NO.	STATION	SIDE	DESCRIPTION	AMOUNT	UNIT
I-R	0+10 TO 32+50		STONE UNDER DRAIN	793	L.F.
			SEEDING	17,477	S.Y.
			COMM. FERT.	2.0	TONS
			M-10 CALCIUM CHLORIDE	3.2	TONS
			<b>TOTAL</b>	<b>793</b>	<b>TONS</b>

EXCAVATION	199	C.Y.
EMBANKMENT	2,538	C.Y.
EMBANKMENT 20"	3,046	C.Y.