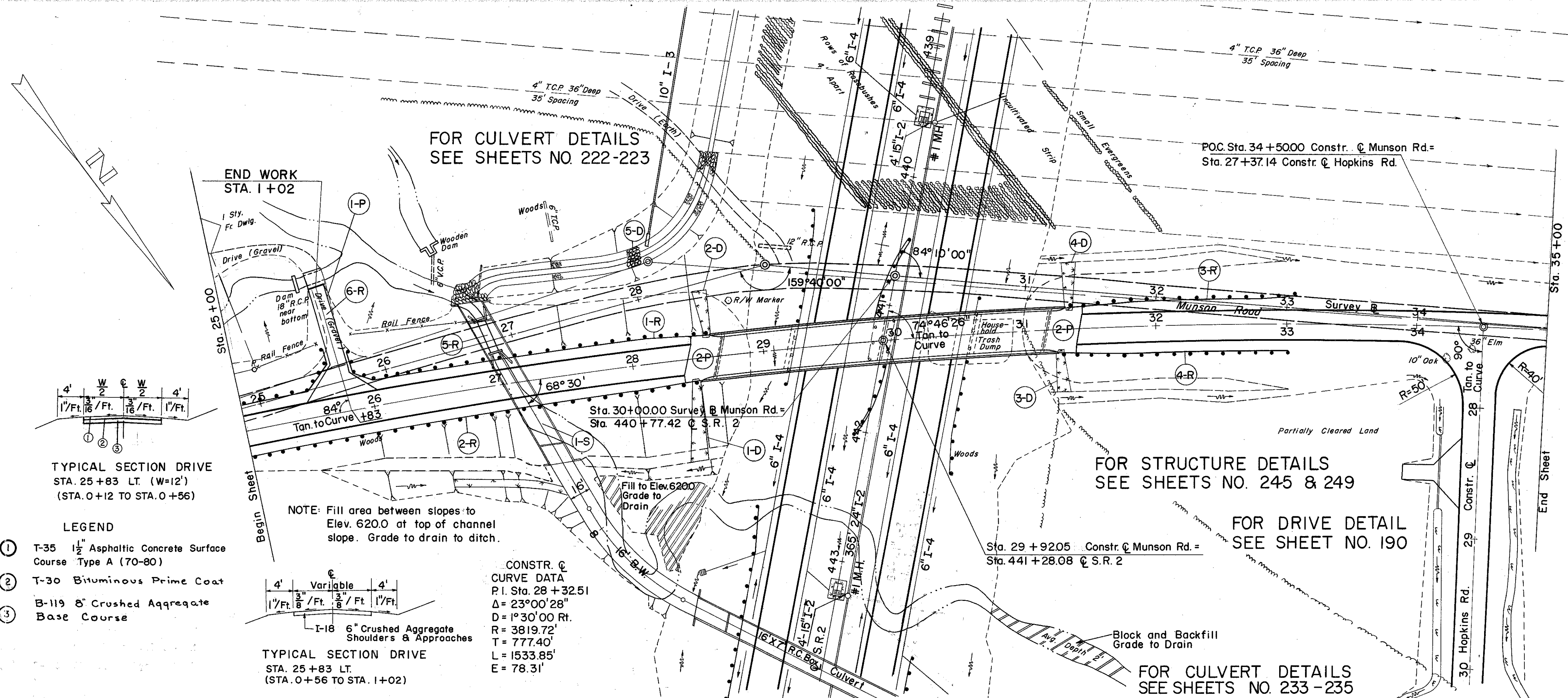


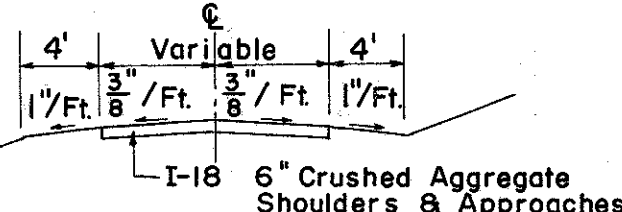
LAKE COUNTY
LAK-2-7.39



TYPICAL SECTION DRIVE
STA. 25+83 LT. (W=12')
(STA. 0+12 TO STA. 0+56)

- LEGEND
- ① T-35 1/2" Asphaltic Concrete Surface Course Type A (70-80)
 - ② T-30 Bituminous Prime Coat
 - ③ B-119 8" Crushed Aggregate Base Course

NOTE: Fill area between slopes to Elev. 620.0 at top of channel slope. Grade to drain to ditch.



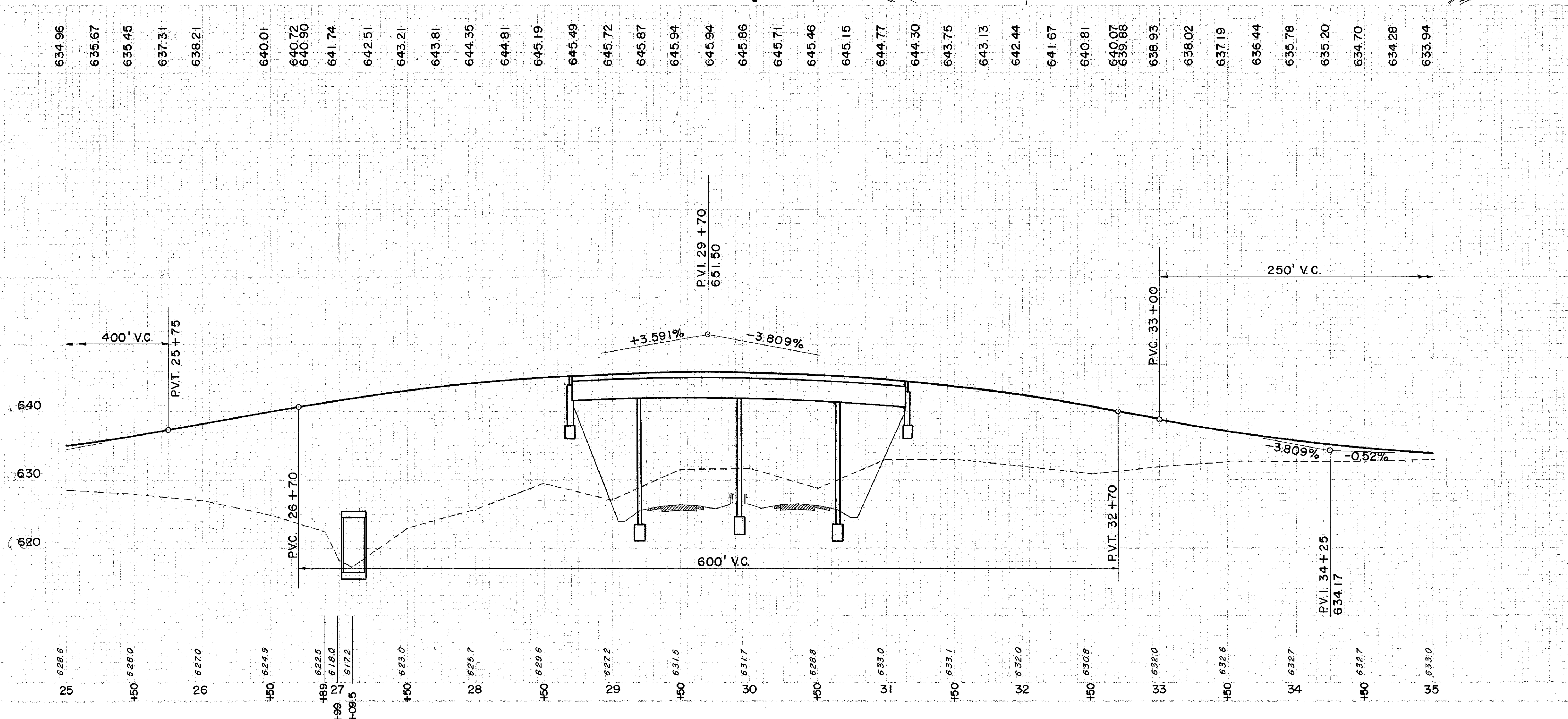
TYPICAL SECTION DRIVE
STA. 25+83 LT.
(STA. 0+56 TO STA. 1+02)

CONSTR. @
CURVE DATA
P.I. Sta. 28+32.51
 $\Delta = 23^{\circ}00'28''$
D = 1930.00 Rt.
R = 3819.72'
T = 777.40'
L = 1533.85'
E = 78.31'

FOR STRUCTURE DETAILS
SEE SHEETS NO. 245 & 249

FOR DRIVE DETAIL
SEE SHEET NO. 190

FOR CULVERT DETAILS
SEE SHEETS NO. 233 - 235



① DRAINAGE

REF. NO.	STATION	TO	FROM	S. Y.	C. Y.	E-2
I-D	28+47	RT	65.8			
2-D	28+59	LT	32.7			
3-D	31+27	RT	32.7			
4-D	31+35	LT	32.7			
5-D	26+92	440H10		334	334	33.4

② STRUCTURE

REF. NO.	STATION	TO	FROM	S. Y.	C. Y.	E-2
I-S	27+10	31	128	164	164	570

SODDING	STATION	WIDTH	LENGTH	S. Y.
	26+50RT	6'	85'	
	27+37RT	6'		57.0

Excavation 711 C.Y.
Embankment 20,887 C.Y.
Total 25,064 C.Y.

③ ROADWAY

REF. NO.	STATION	TO	FROM	S. Y.	C. Y.	E-10	E-11	E-12	E-13	E-14	E-15	E-16	E-17	E-18	E-19	E-20	E-21	E-22	E-23	E-24	
I-R	25+03	28+62	LT	362.5																	
2-R	24+12	28+51	RT	437.5																	
3-R	31+33	33+07	LT	175																	
4-R	31+26	33+00	RT	175																	
5-R	19+50	37+00	LT																		
6-R	25+95	25+95	LT																		
6-R	25+85	25+85	LT																		
TOTALS				11500																	

④ PAVEMENT

REF. NO.	STATION	TO	FROM	S. Y.	C. Y.	E-25
I-P	25+83	25+83	LT	4.5		
2-P	25+83	25+83	LT	4.5		