

LAKE COUNTY
LAK-2-7.39

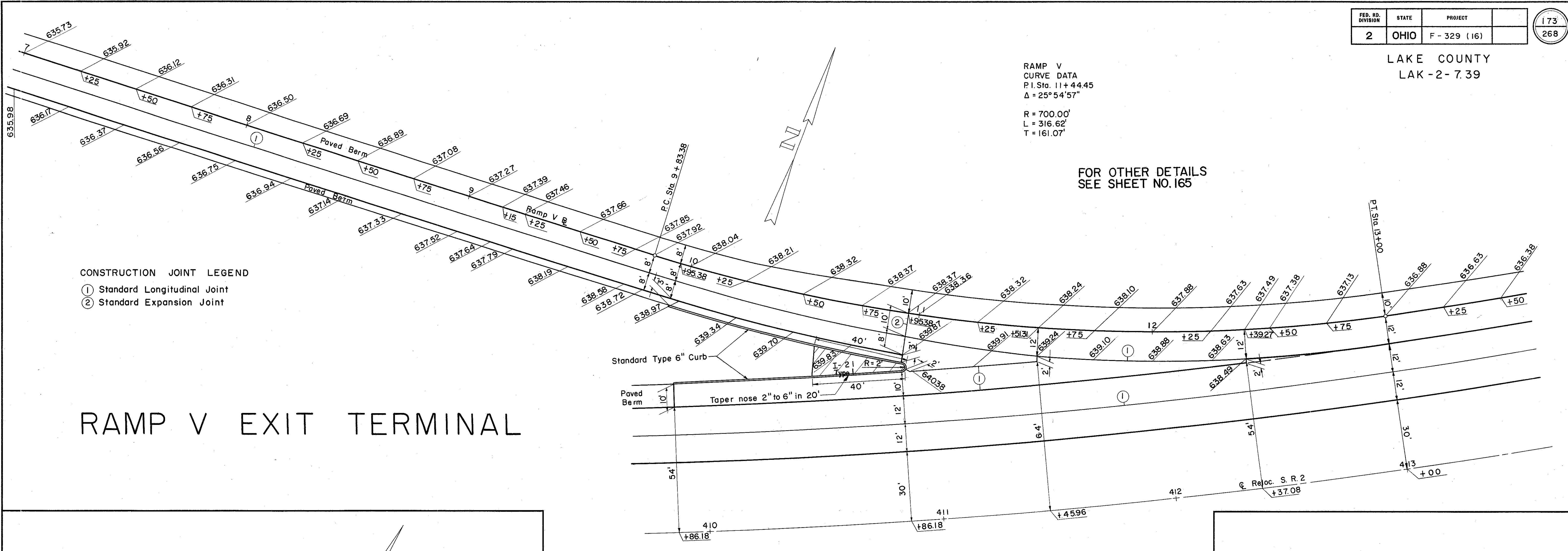
RAMP V
CURVE DATA
P.I. Sta. 11+44.45
 $\Delta = 25^{\circ}54'57''$

R = 700.00'
L = 316.62'
T = 161.07'

FOR OTHER DETAILS
SEE SHEET NO. 165

CONSTRUCTION JOINT LEGEND
 (1) Standard Longitudinal Joint
 (2) Standard Expansion Joint

RAMP V EXIT TERMINAL



RAMP Q
CURVE DATA
P.I. Sta. 6+22.42
 $\Delta = 27^{\circ}40'31''$

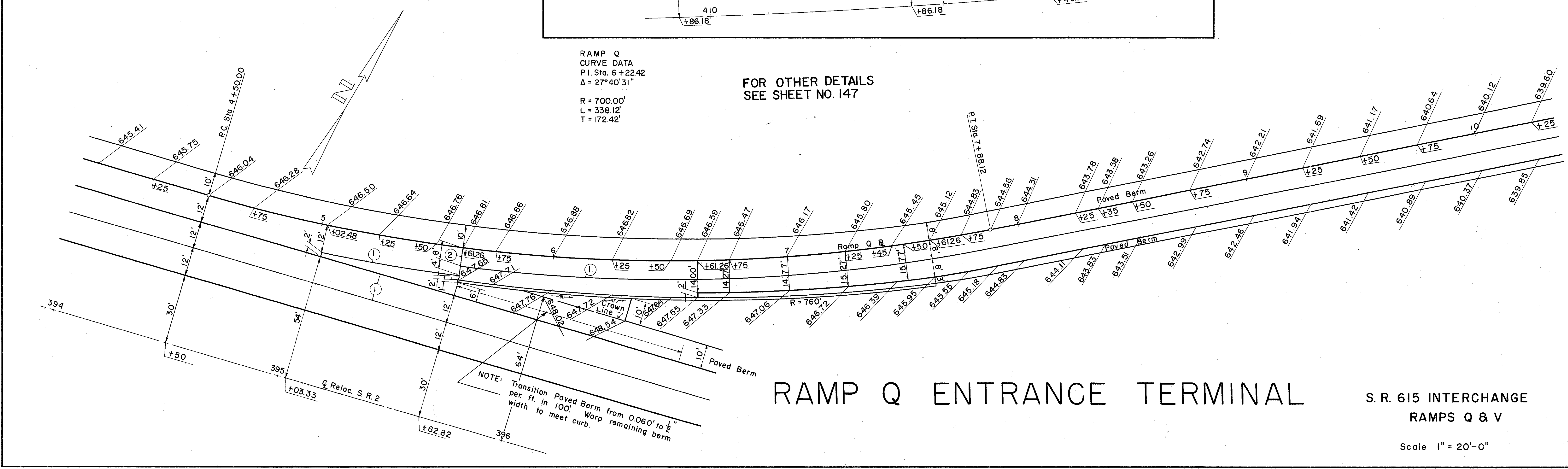
R = 700.00'
L = 338.12'
T = 172.42'

FOR OTHER DETAILS
SEE SHEET NO. 147

RAMP Q ENTRANCE TERMINAL

S. R. 615 INTERCHANGE
RAMPS Q & V

Scale 1" = 20'-0"



NOTE: Transition Paved Berm from 0.060' to 1/2" per ft. in 100'. Warp remaining berm width to meet curb.