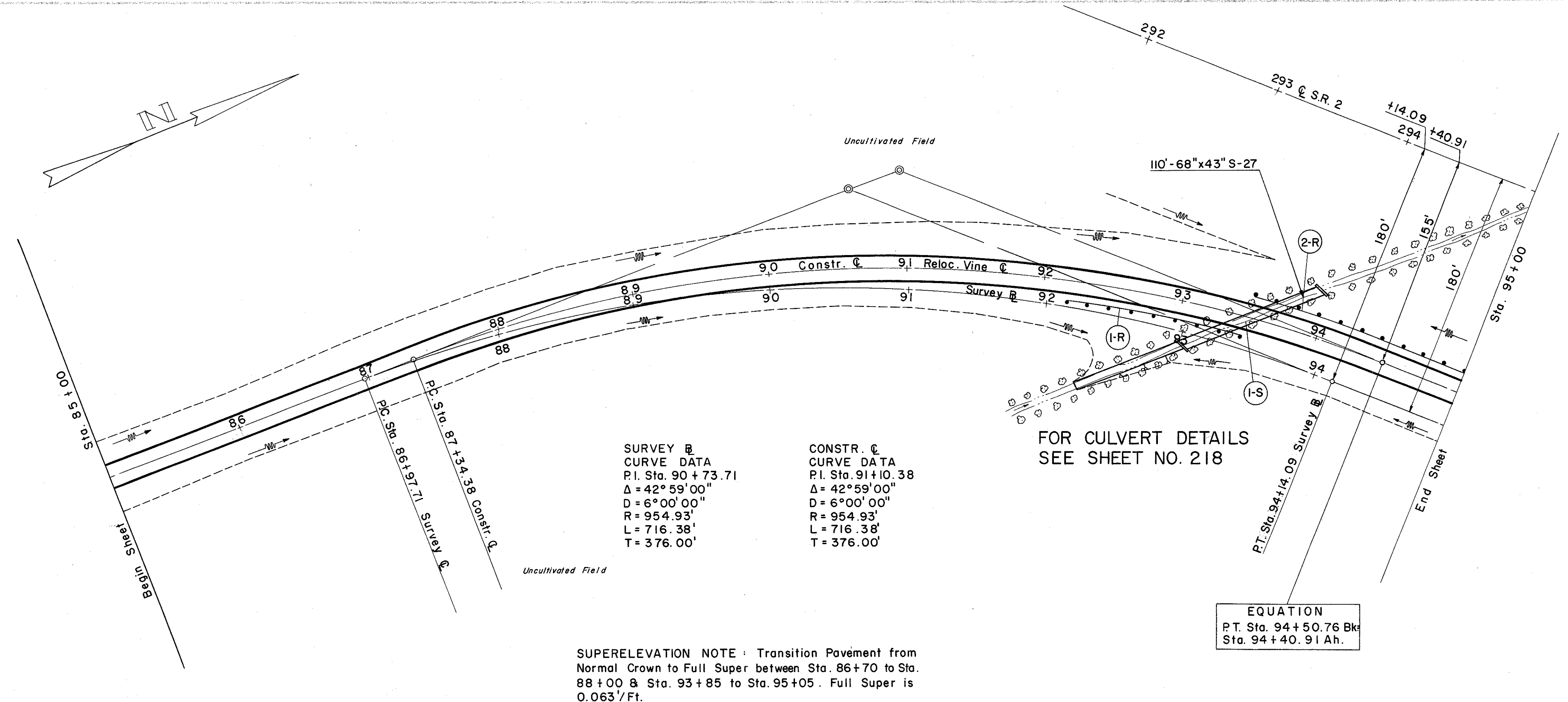


LAKE COUNTY
LAK-2-7.39

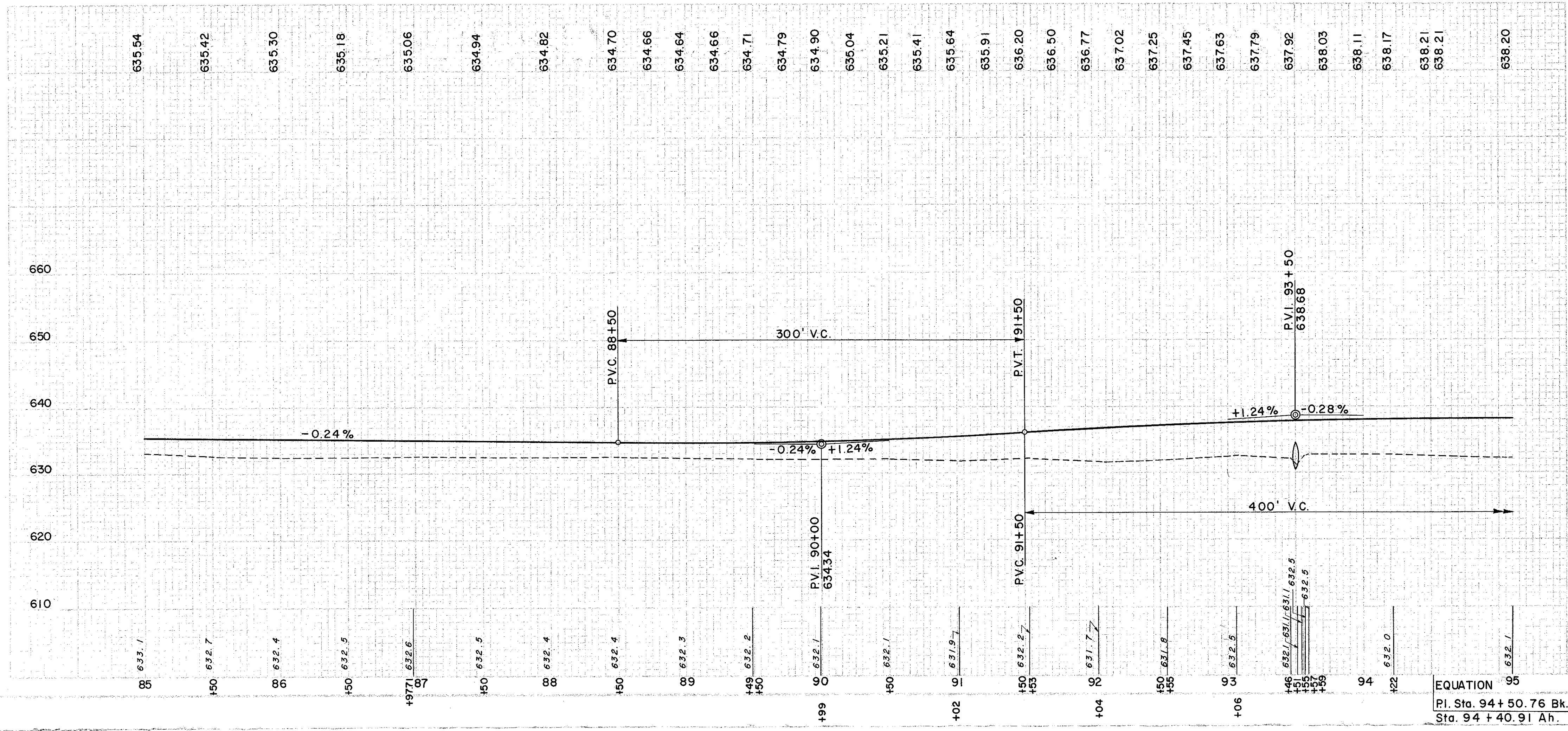
REVISED 11-14-58
This sheet replaces
Sheet No. 84 of the
original plans.



FOR CULVERT DETAILS
SEE SHEET NO. 218

SUPERELEVATION NOTE: Transition Pavement from Normal Crown to Full Super between Sta. 86+70 to Sta. 88+00 & Sta. 93+85 to Sta. 95+05. Full Super is 0.063/Ft.

EQUATION
P.T. Sta. 94+50.76 Bk.
Sta. 94+40.91 Ah.



Ⓢ STRUCTURE

REF. NO.	STATION	SIDE	FROM		TO	L.F.
			93+51	51		
I-S		℄				110
E-2		EXCAV. FOR STRUCT.		59		
E-3		CHANNEL EXCAV.		23		
S-1		CONC. FOR STRUCT. CLASS "E"		443		
S-27		PIPE FOR RDWY. CULVERTS M-2066(b)				

Ⓡ ROADWAY

REF. NO.	STATION	SIDE	FROM		TO	L.F.
			93+52	52		
I-15		STEEL BEAM TYPE NO. 2A				160
1-R		RT	93+46			128
2-R		LT	95+12			160

EXCAVATION	= 237 C.Y.
EMBANKMENT	= 5,916 C.Y.
EMBANKMENT @ 20'	= 7,099 C.Y.