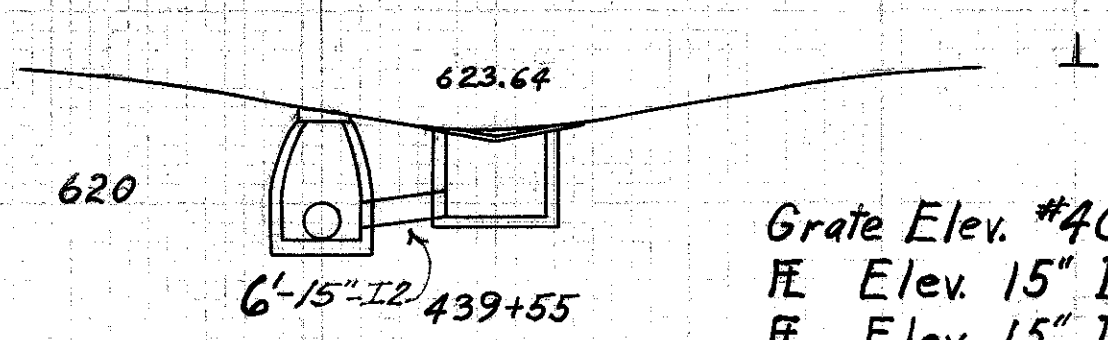


SEEDING
 END STA. 439+00
 156
 155
 156
 1728
 1756
 160
 1778
 160
 1783
 161
 1795
 162

140 120 100 80 60 40 20 0 20 40 60 80 100

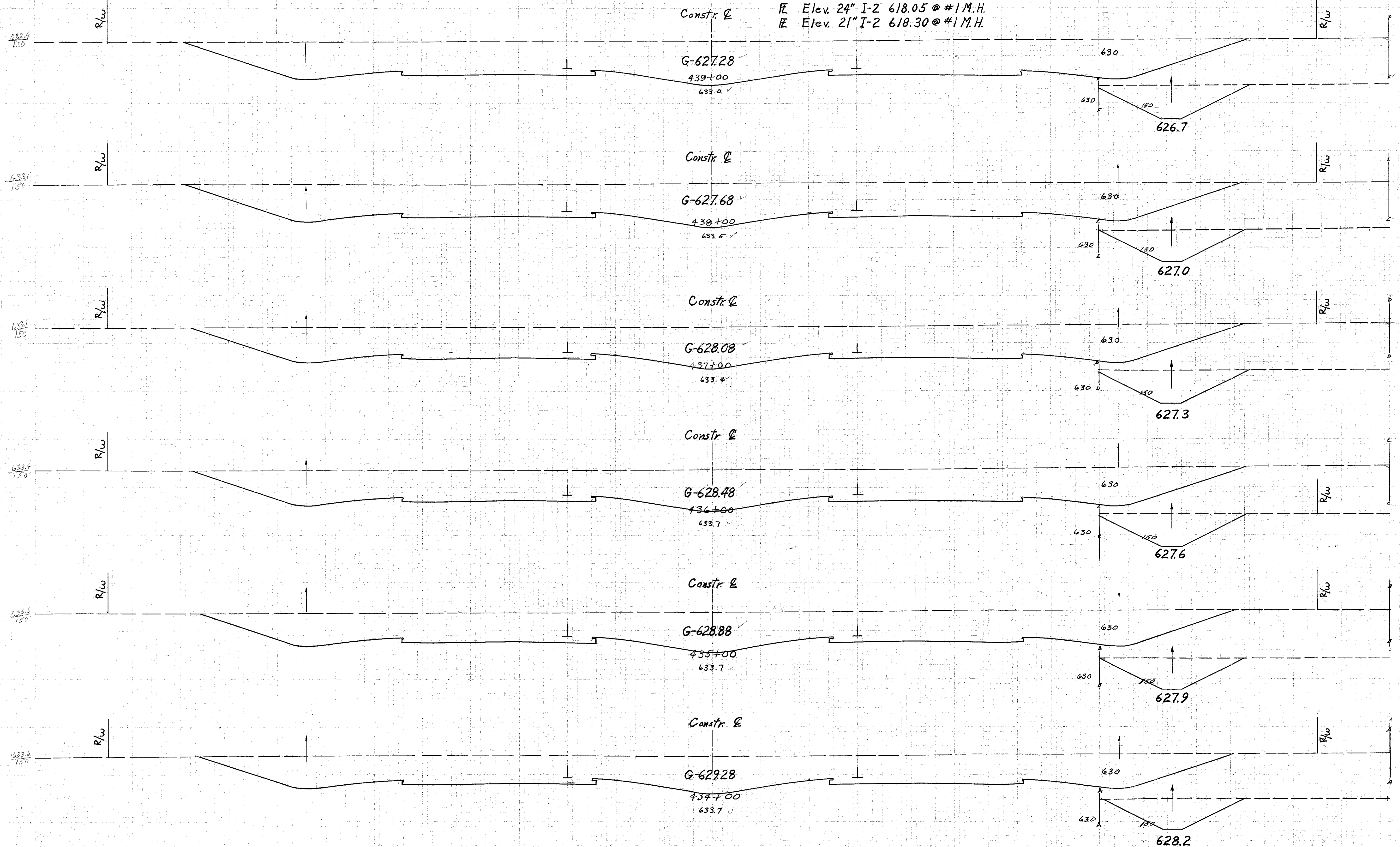
Sta. 439+58 Begin Median Slope Transition
 & Separation For Guard Rail Mound



Grate Elev. #4 C.B. 623.39
 FE Elev. 15" I-2 619.40 @ #4 C.B.
 FE Elev. 15" I-2 618.80 @ #1 M.H.
 FE Elev. 24" I-2 618.05 @ #1 M.H.
 FE Elev. 21" I-2 618.30 @ #1 M.H.

LAKE COUNTY
 LAK-2-7.39

END AREA	CU. YDS.
CUT	FILL
1444	5239
1385	5070
1353	4965
1328	4774
1250	4569
1217	4415
1167	



Sta. 433+00
 Relocation S.R.2
 Sta. 434+00 to 439+00

Checked by
 9/16/58
 Prepared by
 1/3/58
 Checked by
 1/3/58