

SEEDING
5/10/58

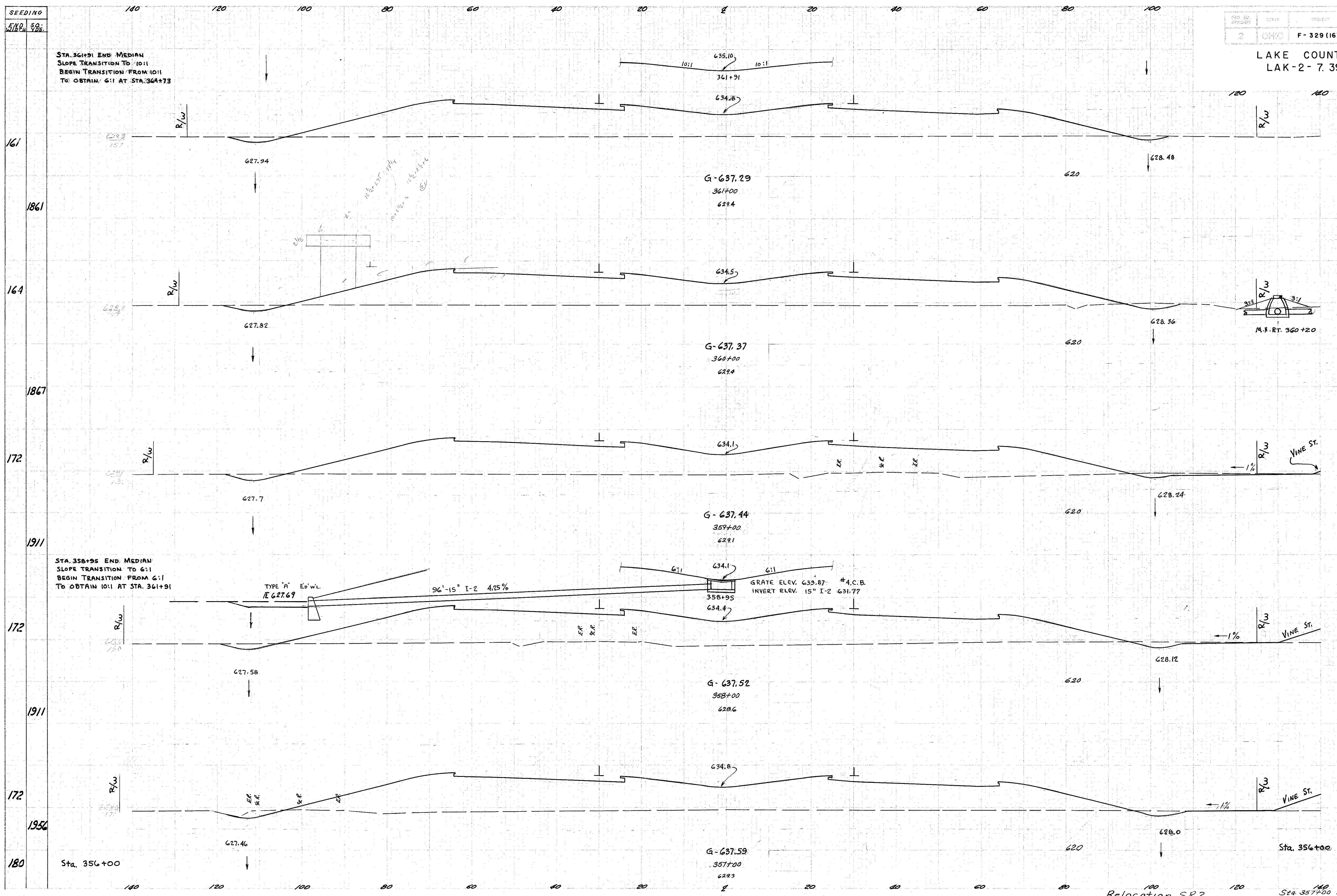
2 OHIO F-329 (16)

52
268

LAKE COUNTY
LAK-2-7.39

STA. 361+91 END MEDIAN
SLOPE TRANSITION TO 10:1
BEGIN TRANSITION FROM 10:1
TO OBTAIN 6:1 AT STA. 364+73

STA. 358+95 END MEDIAN
SLOPE TRANSITION TO 6:1
BEGIN TRANSITION FROM 6:1
TO OBTAIN 10:1 AT STA. 361+91



END AREA		C.U. YDS.	
Cut	Fill	Cut	Fill
21	1131		
		85	4239
25	1158		
		107	4319
33	1174		
		113	4407
28	1206		
		89	4459
20	1202		
		128	4533
49	1246		

Complete to RR
D.C. 9-1-58
v. WL

Drawn by M.D.
7-15-58
D.F. 9-1-58

Relocation S.R.2 Sta. 357+00 to 361+00