

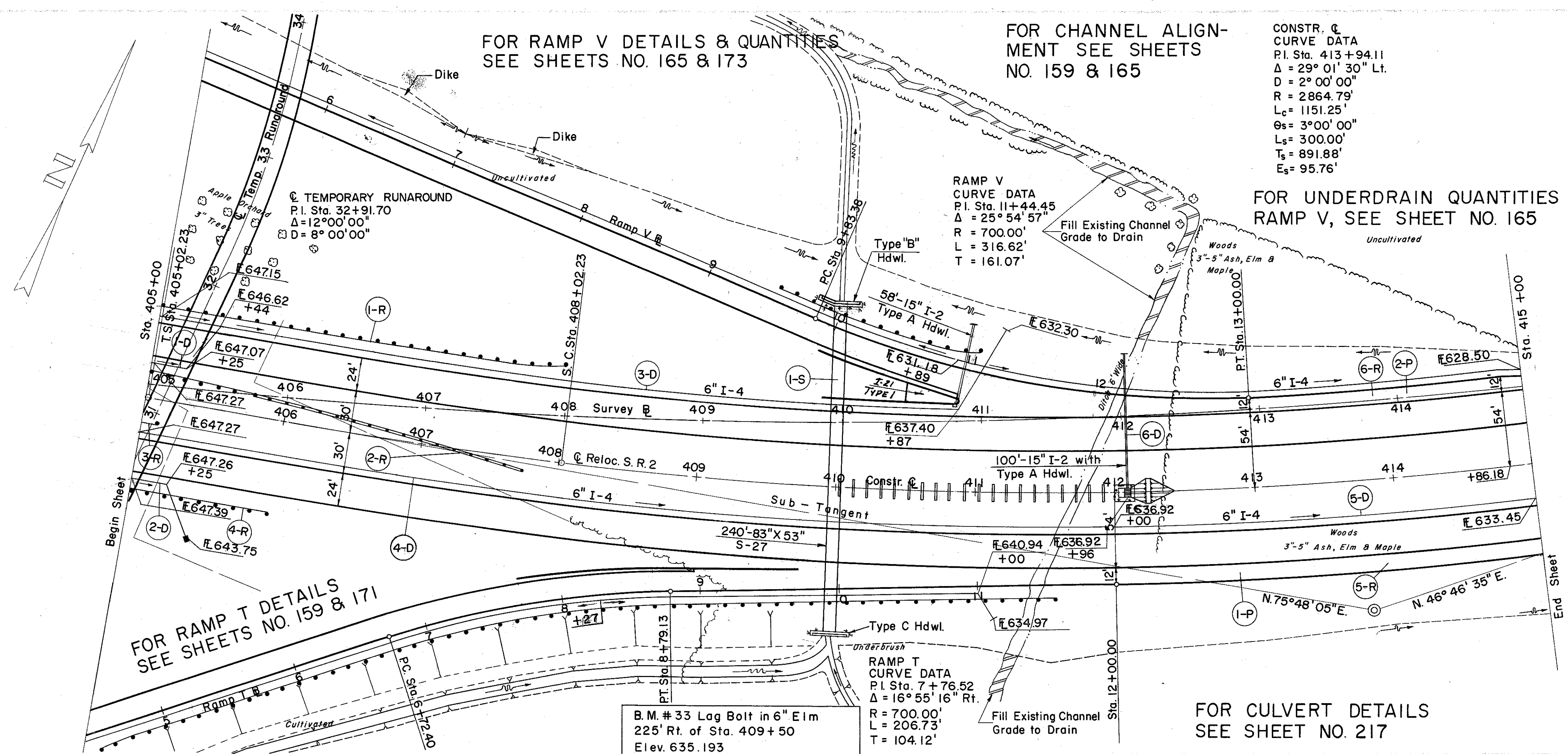
LAKE COUNTY
 LAK-2-7.39

FOR RAMP V DETAILS & QUANTITIES
 SEE SHEETS NO. 165 & 173

FOR CHANNEL ALIGNMENT
 SEE SHEETS NO. 159 & 165

CONSTR. & CURVE DATA
 P.I. Sta. 413+94.11
 $\Delta = 29^\circ 01' 30''$ Lt.
 $D = 2^\circ 00' 00''$
 $R = 2864.79'$
 $L_c = 1151.25'$
 $\theta_s = 3^\circ 00' 00''$
 $L_s = 300.00'$
 $T_s = 891.88'$
 $E_s = 95.76'$

FOR UNDERDRAIN QUANTITIES
 RAMP V, SEE SHEET NO. 165



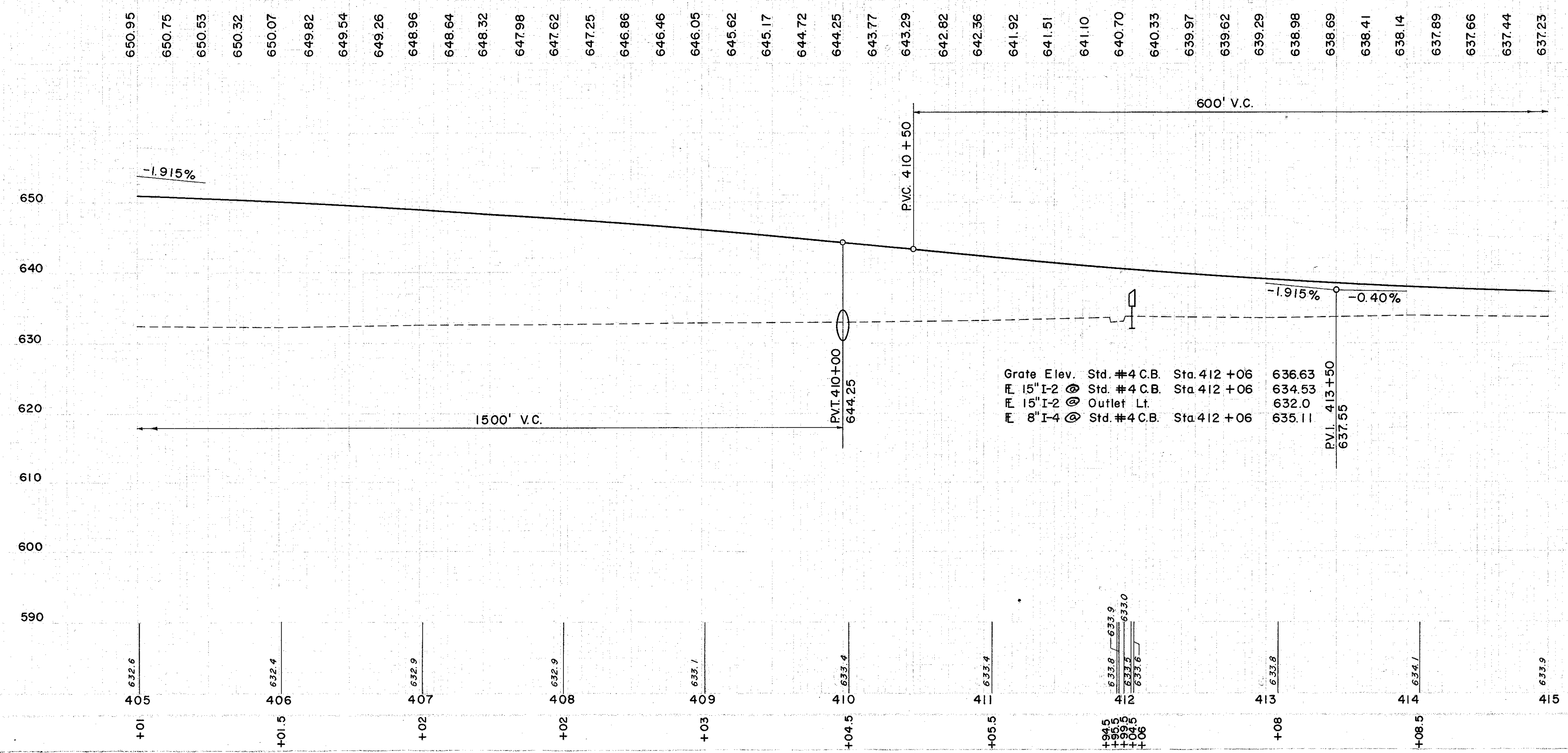
FOR RAMP T DETAILS
 SEE SHEETS NO. 159 & 171

FOR CULVERT DETAILS
 SEE SHEET NO. 217

B.M. # 33 Lag Bolt in 6" Elm
 225' Rt. of Sta. 409+50
 Elev. 635.193

RAMP T
 CURVE DATA
 P.I. Sta. 7+76.52
 $\Delta = 16^\circ 55' 16''$ Rt.
 $R = 700.00'$
 $L = 206.73'$
 $T = 104.12'$

RAMP V
 CURVE DATA
 P.I. Sta. 11+44.45
 $\Delta = 25^\circ 54' 57''$
 $R = 700.00'$
 $L = 316.62'$
 $T = 161.07'$



Grate Elev. Std. #4 C.B. Sta. 412+06 636.63
 15" I-2 @ Std. #4 C.B. Sta. 412+06 634.53
 15" I-2 @ Outlet Lt. 632.0
 8" I-4 @ Std. #4 C.B. Sta. 412+06 635.11

(D) DRAINAGE

REF. NO.	STATION	DESCRIPTION	FROM	TO	EA	I-4	I-5	I-6	I-8	S-1	S-4	L-10
I-D	405+00	6" PIPE 8' OUT-LET UNDER DRAIN	405+00	407+96	LT	59						
2-D	405+00	6" PIPE 8' OUT-LET UNDER DRAIN	405+00	407+73	RT	51						
3-D	405+00	6" PIPE 8' OUT-LET UNDER DRAIN	410+87	LT	635	10						
4-D	405+00	6" PIPE 8' OUT-LET UNDER DRAIN	411+96	RT	707	10						
5-D	412+00	6" PIPE 8' OUT-LET UNDER DRAIN	415+00	RT	300							
6-D	412+06	6" PIPE 8' OUT-LET UNDER DRAIN										
		TOTAL				100					146	54.5

(R) ROADWAY

REF. NO.	STATION	DESCRIPTION	FROM	TO	EA	I-5	I-6	I-8	S-1	S-4	L-10
I-5	412+00	6" WYE	412+00	415+00	RT	200					
I-6	412+00	6" WYE	412+00	415+00	LT	200					
I-8	412+00	6" WYE	412+00	415+00	RT	100					
S-1	412+00	6" WYE	412+00	415+00	RT						
S-4	412+00	6" WYE	412+00	415+00	LT						
L-10	412+00	6" WYE	412+00	415+00	RT						
		TOTAL				200	487.5	138.6			

REF. NO.	STATION	DESCRIPTION	FROM	TO	EA	I-5	I-6	I-8	S-1	S-4	L-10
I-5	412+00	6" WYE	412+00	415+00	RT	200					
I-6	412+00	6" WYE	412+00	415+00	LT	200					
I-8	412+00	6" WYE	412+00	415+00	RT	100					
S-1	412+00	6" WYE	412+00	415+00	RT						
S-4	412+00	6" WYE	412+00	415+00	LT						
L-10	412+00	6" WYE	412+00	415+00	RT						
		TOTAL				200	487.5	138.6			

(S) STRUCTURE

REF. NO.	STATION	DESCRIPTION	FROM	TO	EA	I-5	I-6	I-8	S-1	S-4	L-10
I-5	410+00	6" WYE	410+00	415+00	RT						
I-6	410+00	6" WYE	410+00	415+00	LT						
I-8	410+00	6" WYE	410+00	415+00	RT						
S-1	410+00	6" WYE	410+00	415+00	RT						
S-4	410+00	6" WYE	410+00	415+00	LT						
L-10	410+00	6" WYE	410+00	415+00	RT						
		TOTAL									

REF. NO.	STATION	DESCRIPTION	FROM	TO	EA	I-5	I-6	I-8	S-1	S-4	L-10
I-5	410+00	6" WYE	410+00	415+00	RT						
I-6	410+00	6" WYE	410+00	415+00	LT						
I-8	410+00	6" WYE	410+00	415+00	RT						
S-1	410+00	6" WYE	410+00	415+00	RT						
S-4	410+00	6" WYE	410+00	415+00	LT						
L-10	410+00	6" WYE	410+00	415+00	RT						
		TOTAL									

Excavation: 19 C.Y.
 Embankment: 56,335 C.Y.
 Total: 67,602 C.Y.