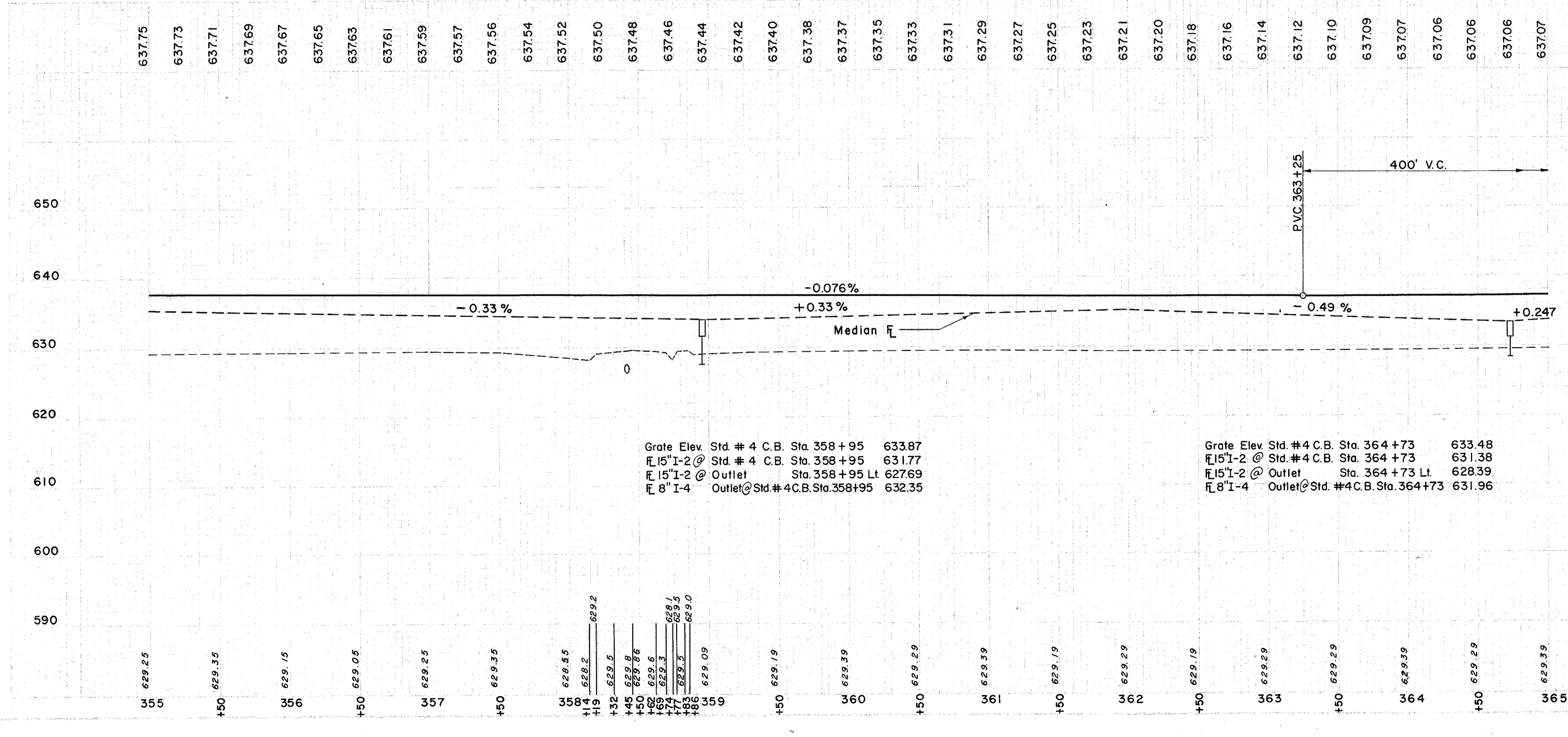
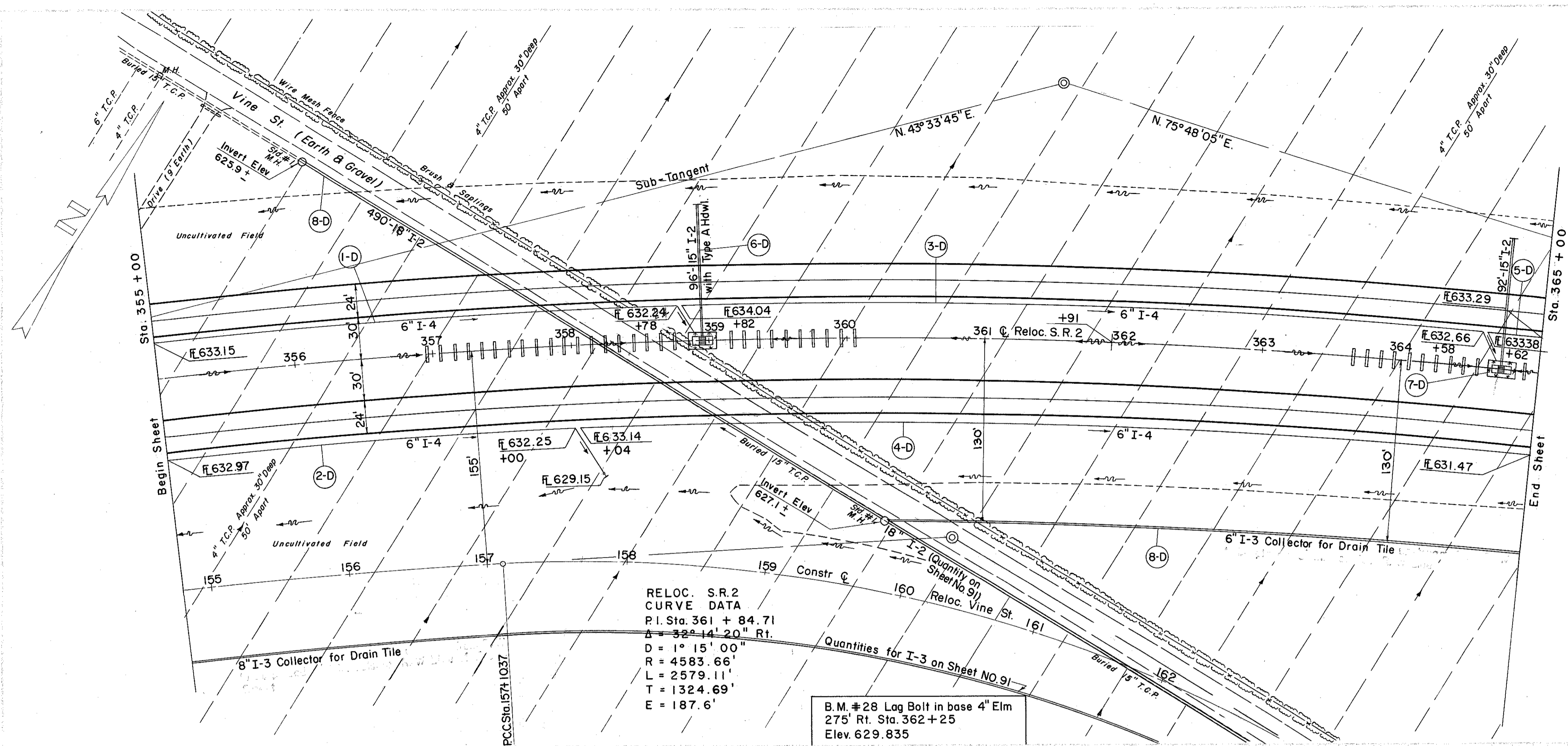


LAKE COUNTY
LAK-2-7.39



(D) DRAINAGE

REF. NO.	STATION	TO	FROM	DESCRIPTION	QTY.
I-12	CLASS 'A' STORM SEWER	15"	18"	CLASS 'C'	490
I-5	6" 60° BEND	EA			
I-4	8" OUTLET PIPE UNDER DRAIN	10	10		
I-3	ROADWAY DRAINAGE	6"			
S-4	REINFORCED STEEL	LBS.			
S-1	CONCRETE STRUCTURE	C.Y.			
I-8	STD. #4 CATCH BASIN	EA			
I-12	PIPE REMOVAL UNDER	LF.			
E-12	PIPE REMOVAL UNDER	LF.			

(R) ROADWAY

REF. NO.	STATION	TO	FROM	DESCRIPTION	QTY.
				Excavation	869 C.Y.
				Reinforcement	43342 C.Y.
				Embankment @ 20%	52010 C.Y.