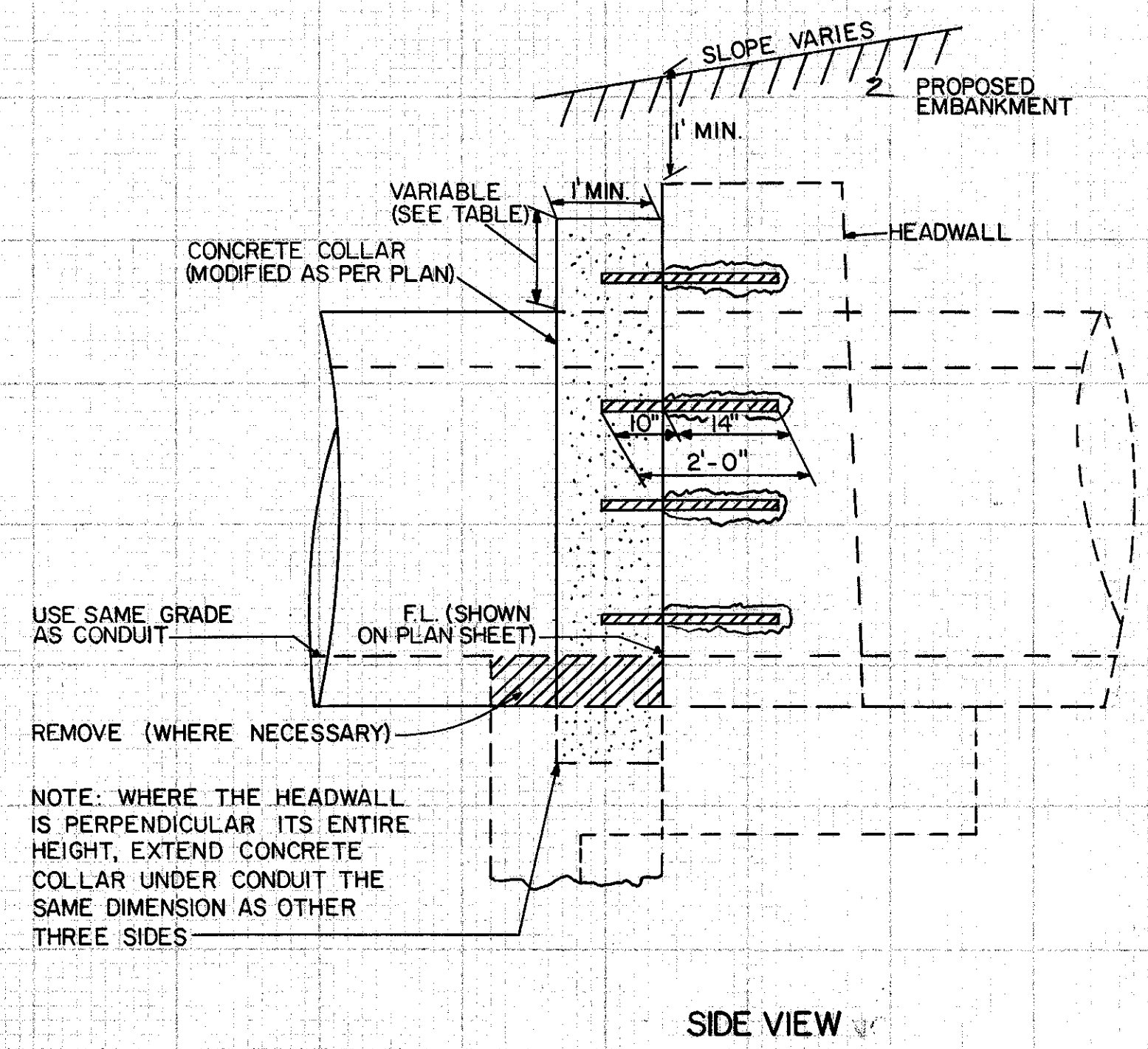
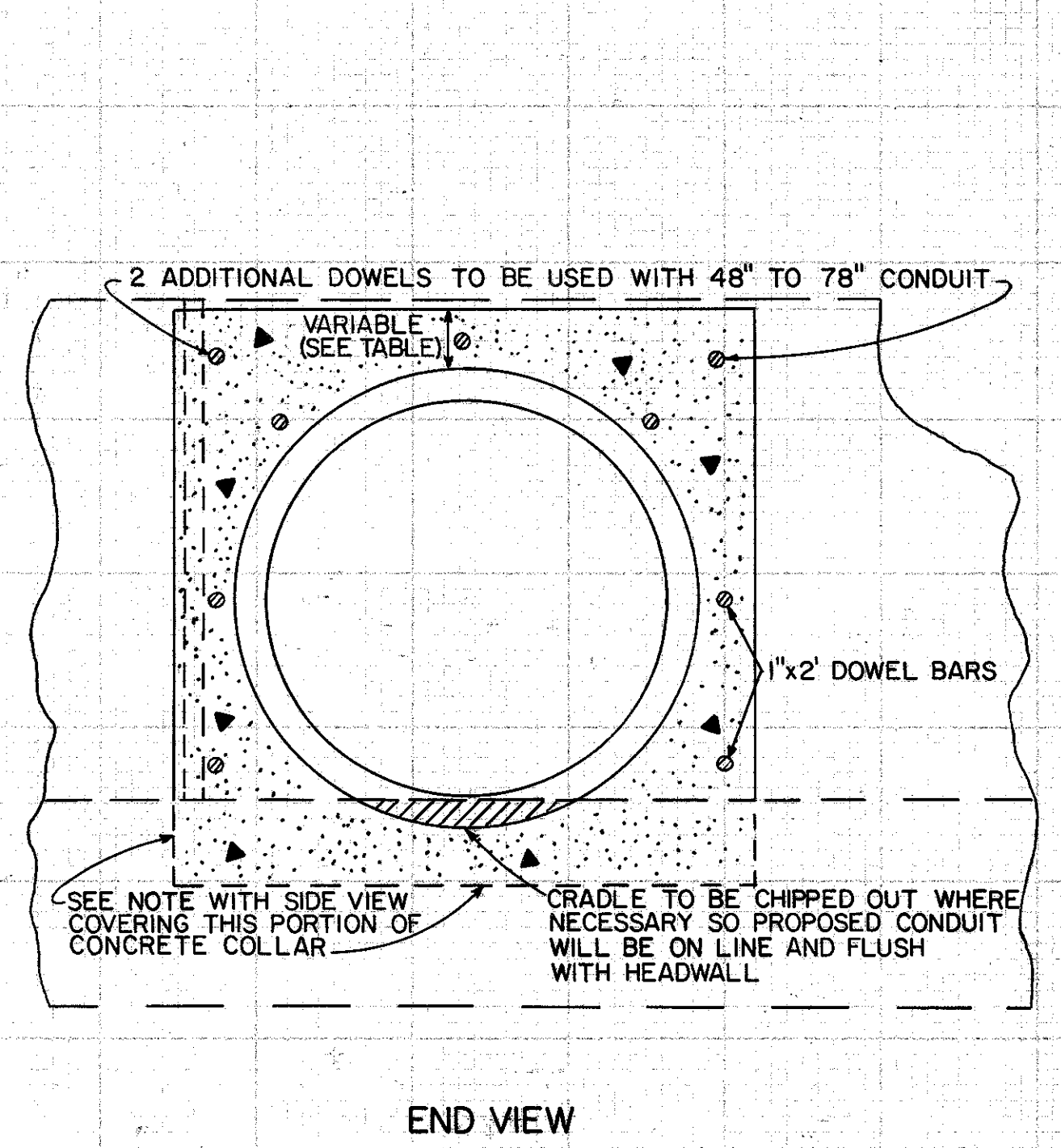
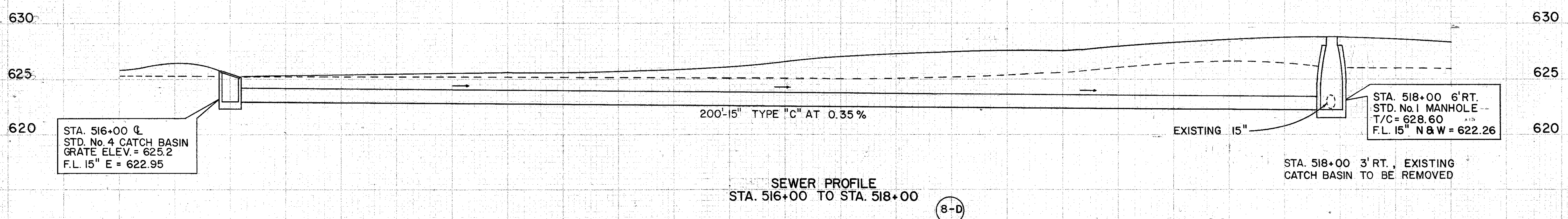
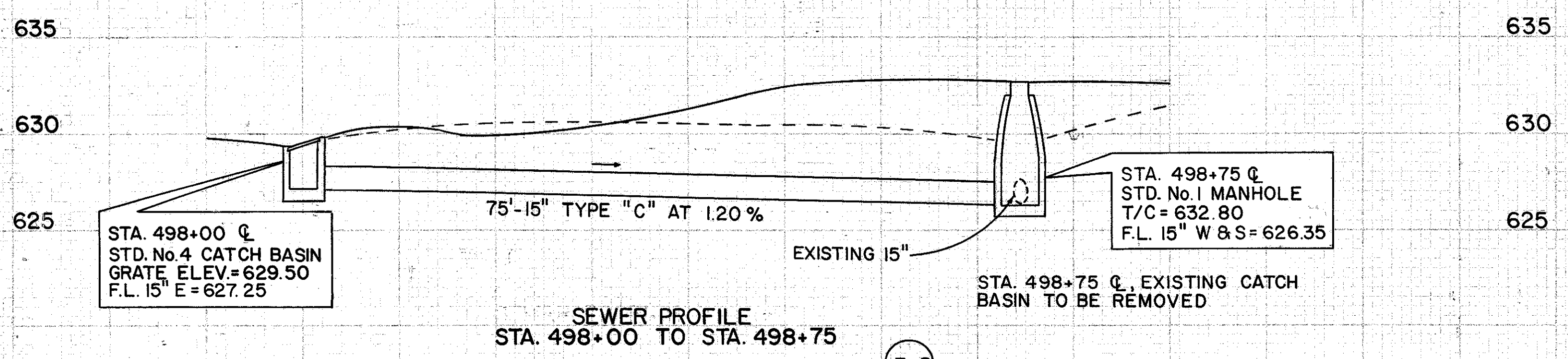


DRAINAGE DETAILS



NOTE:
THE COST OF REMOVING PORTIONS OF HEADWALLS TO CRADLE PROPOSED CONDUITS, DRILLING AND SETTING DOWELS, CONSTRUCTING CONCRETE COLLARS (USING CLASS "C" CONCRETE), AND ALL OTHER RELATED WORK SUCH AS SAWING AND REMOVING CONCRETE PAVED GUTTERS, IS TO BE INCLUDED IN THE PERTINENT BID ITEM 603 CONDUIT, AS PER PLAN

EDGE DISTANCE	PIPE SIZE
6" MIN.	≤ 30" CONDUIT
8" MIN.	36" "
	42" "
	48" "
	54" "
	60" "

NOTE:
AS AN ALTERNATE TO THE DOWELLED CONCRETE COLLAR DETAILED, FOR CULVERTS 24" IN DIAMETER OR LESS, THE HEADWALL AND THE LAST SECTION OF THE CONDUIT MAY BE REMOVED AND REPLACED WITH AN ADDITIONAL SECTION OF NEW CONDUIT AT NO ADDITIONAL COST TO THE STATE. IF THE ALTERNATE METHOD IS USED, THE COST OF REMOVING THE WALL AND CONDUIT AND REPLACING THE LENGTH OF CONDUIT REMOVED SHALL BE INCLUDED IN THE UNIT PRICE BID FOR THE PROPOSED CONDUIT EXTENSION, MEASURED FROM THE FACE OF THE WALL.

CONCRETE COLLAR DETAIL