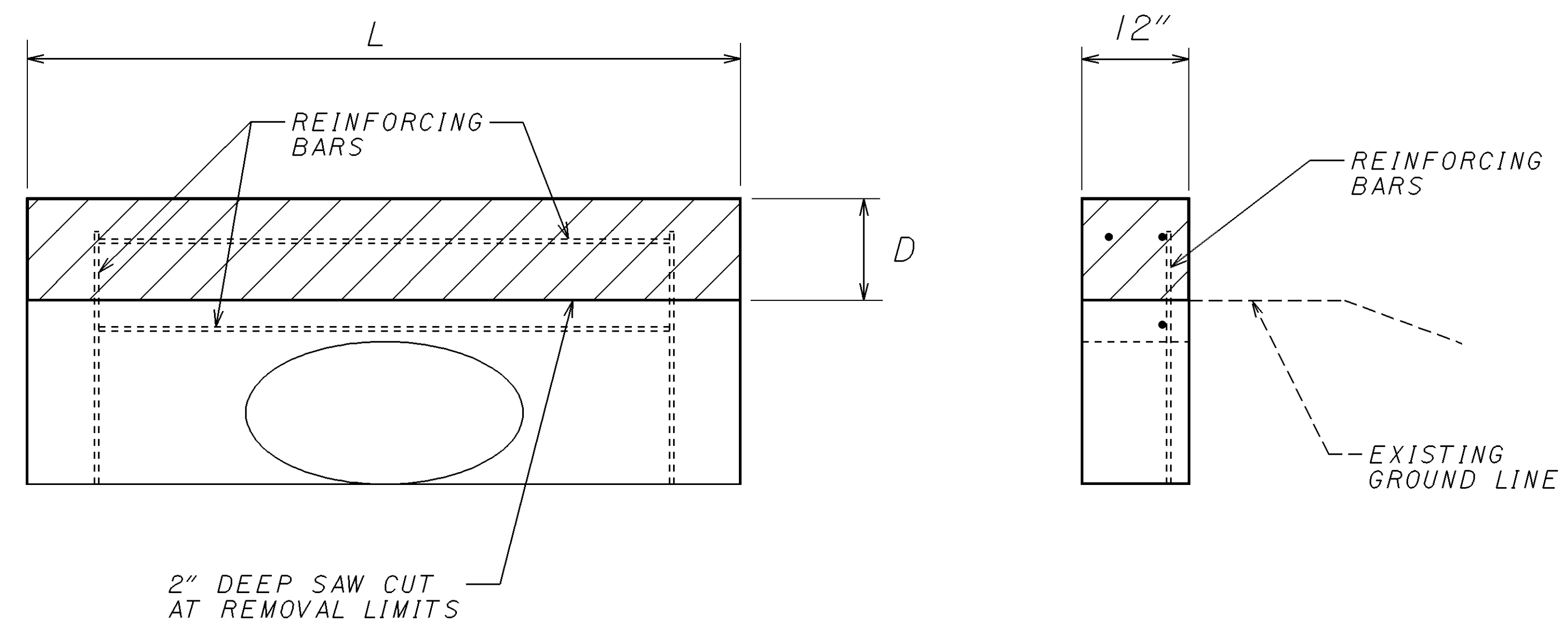


TYPICAL HEADWALL SAWING DETAIL



ITEM 202 - PORTIONS OF STRUCTURES REMOVED, AS PER PLAN

THIS ITEM OF WORK SHALL INCLUDE ALL EQUIPMENT, MATERIAL, AND LABOR REQUIRED TO PERFORM THE WORK AS DESCRIBED BELOW FOR EXISTING CONCRETE HEADWALL STRUCTURES.

THE CONTRACTOR SHALL REMOVE THE TOP PORTION OF REINFORCED CONCRETE HEADWALLS TO A DEPTH AS SPECIFIED IN THE TABLE AND AS SHOWN IN THE DETAIL DRAWING. THE DEPTH OF REMOVAL MAY BE ADJUSTED ONLY AS DIRECTED BY THE ENGINEER. THE CONTRACTOR SHALL PERFORM THE REMOVAL WORK IN A MANNER WHICH WILL LEAVE THE REMAINING DRAINAGE STRUCTURE UNDAMAGED.

REMOVAL WORK SHALL INCLUDE A 2 INCH DEEP HORIZONTAL SAW CUT AROUND THE PERIPHERY OF THE PORTION OF HEADWALL TO BE REMOVED SO THAT A NEAT EDGE WILL RESULT. ALL REINFORCING STEEL EXPOSED BY THE REMOVAL WORK SHALL BE CUT FLUSH WITH THE SURFACE OF THE REMANING CONCRETE.

AFTER REMOVAL WORK HAS BEEN COMPLETED, THE REMAINING CONCRETE SURFACE SHALL BE CAPPED WITH A 2 INCH MINIMUM THICKNESS OF MAGNESIUM PHOSPHATE CONCRETE TO PROVIDE A SMOOTH AND LEVEL SURFACE AND A 2 INCH MINIMUM COVER OVER ALL EXPOSED REINFORCING BARS. THEN ALL EXPOSED CONCRETE SURFACES SHALL BE SEALED WITH AN EPOXY SEALER. ALL REQUIRED SURFACE PREPARATION, MIXING, AND APPLICATION OF BOTH THE MAGNESIUM PHOSPHATE CONCRETE AND EPOXY SEALER SHALL BE IN ACCORDANCE WITH THE MANUFACTURE'S SPECIFICATIONS AND RECOMMENDATIONS.

THE CONTRACTOR SHALL GRADE AROUND EACH HEADWALL SO THAT THE TOP AND CORNERS OF THE FINISHED HEADWALL ARE FLUSH WITH THE GROUND.

ALL REGRADED AREAS AND ALL AREAS DISTURBED BY REMOVAL OPERATIONS SHALL BE FERTILIZED, SEED, AND MULCHED IN ACCORDANCE WITH ITEM 659.

ALL COSTS OF THE WORK DESCRIBED HERE SHALL BE INCLUDED FOR PAYMENT IN THE LUMP SUM BID FOR ITEM 202 - PORTIONS OF STRUCTURES REMOVED, AS PER PLAN.

LOCATION STATION S.R. 2	SIDE	'D' DEPTH INCH	'L' LENGTH FEET	REMARKS
256+96	LT	9	12	
458+25	RT	18	20	
458+25	LT	18	20	
458+50	LT	12	8	
473+00	LT	18	20	
473+00	RT	18	20	

NOT TO SCALE

I:\PROJECTS\PI\19530\GNN\19530gmd.dgn 22-AUG-2001 10:45AM fkonopka